

Philips  
LCD monitor

**23" (58.4 cm)**  
Autostereoscopic 3D  
Full HD

**BDL2331VS**



## A full 3D experience

without the need for special glasses

Deliver your messages in stunning 3D, with excellent picture quality and no need for special glasses. With 28 lenticular views you can deliver jaw dropping images that will amaze your audience.

### **Stunning 3D experience**

- 3D content visualization
- 2D plus depth
- 28 lenticular views for amazing smooth 3D pictures

### **Lower total cost of ownership**

- SmartPower for energy saving

### **Optimized for public viewing**

- Full HD LCD display, 1920x1080p

### **Operational flexibility**

- Autostereoscopic 3D

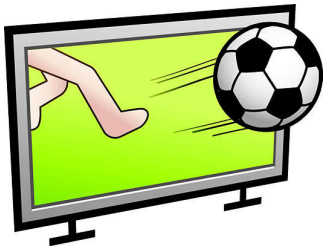
### **Sustainable and safe**

- Temperature sensor measures the health condition
- Complies with RoHS standards to care for the environment

# PHILIPS

# Highlights

## Autostereoscopic 3D



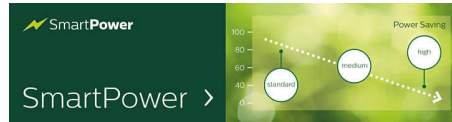
Enjoy a stunning 3D experience with no need for special glasses thanks to the autostereoscopic 3D effect. Using lenticular technology, it gives excellent clarity and depth, making your 3D experience even more lifelike and enjoyable.

## Full HD LCD display 1920x1080p

This display has a resolution that is referred to as Full HD. The state-of-the-art LCD screen technology has the full high-definition widescreen resolution of 1080 progressive lines, each with 1920 pixels. This allows the best possible picture quality for HD input signals with up to 1080 lines. It produces brilliant flicker-free progressive scan pictures with optimum brightness and superb colors.

This vibrant and sharp image will provide you with an enhanced viewing experience.

## SmartPower



The backlight intensity can be controlled and pre-set by the system to reduce the power consumption by up to 50%, which saves substantially on energy costs.

## Temperature sensor

This public display contains a temperature sensor to monitor the internal health condition. In case the internal temperature surpasses the preset threshold, automatically two internal fans will be activated to cool down the display to normal conditions.

## Compliant with RoHS standards

Philips designs and produces display products in compliance with strict Restriction of Hazardous Substances (RoHS) standards that

restrict lead and other toxic substances that can harm the environment.

## 28 lenticular views

With 28 lenticular views, you can "peek" around virtual objects on the 3D display, giving you the most stunning 3D visual effects around.

## 2D plus depth

2D-plus-Depth converted to 28 different views and interwoven into a stunning 3D format

## 3D content visualization

Software tools are provided with the display to play-out 3D content and control the 3D and 2D visualization parameters. The actual 3D content can be created via plug-ins available for popular 3D animation software packages. Existing 2D or stereo content can be converted into 2D-plus-Depth format. The 2D-plus-Depth format is compatible with existing compression tools, as the additional bandwidth of the depth is small.



# Specifications

## Picture/Display

- Diagonal screen size (metric): 58.9 cm
- Diagonal screen size (inch): 23 inch
- Aspect ratio: 16:9
- Panel resolution: 1920x1080p
- Pixel pitch: 0.265 x 0.265 mm
- Optimum resolution: 1920 x 1080 @ 60Hz
- Brightness: 300 cd/m<sup>2</sup>
- Display colors: 16.7 million colors
- Contrast ratio (typical): 1000:1
- Response time (typical): 5 ms
- Viewing angle (horizontal): 150 degree
- Viewing angle (vertical): 150 degree
- Picture enhancement: 3/2 - 2/2 motion pull down, 3D Combfilter, Motion compens. deinterlacing, Progressive scan, 3D MA deinterlacing, Dynamic contrast enhancement
- 3D Technology: Autostereoscopic 3D display, Fixed Lenticular 3D Technology, Input Format: 2D plus depth

## Connectivity

- PC: DVI-D x1
- USB: USB 2.0 x 1
- AV output: Audio (L/R) x1

## Convenience

- Placement: Landscape
- Screen saving functions: Pixel shift, Low bright
- Keyboard control: Hidden, Lockable
- Energy saving functions: Ambient light sensor, Smart Power
- Safety control functions: Heat Control, Temperature Sensor
- Picture performance: Advanced color control
- Packaging: Reusable box

## Sound

- Built-in speakers: 2 x 1.5 W

## Power

- Consumption (On mode): Typ. 28.62W
- Standby power consumption: 0.1W

## Dimensions

- Bezel thickness: 1.6 cm / 0.63 inch
- Set height (with stand): 499 mm
- Set Width: 566 mm
- Product weight: 6.5 kg
- Set depth (with stand): 171 mm
- Set Height: 360 mm
- Set Depth: 50 mm
- Wall Mount: 100 x 100 mm
- Product weight (lb): 14.3 lb

## Operating conditions

- Temperature range (operation): 0 - 40 °C
- MTBF: 50.000 hour(s)
- Relative humidity: 20 - 80 %

## Accessories

- Included accessories: Remote Control, Batteries for remote control, AC Power Cord, User manual on CD-ROM, Quick start guide
- Optional accessories: 3D rendering box

## Miscellaneous

- On-Screen Display Languages: English, French, German, Italian, Polish, Turkish, Russian, Simplified Chinese
- Warranty: Europe/North America: 1 year
- Regulatory approvals: CE, RoHS, GOST



Issue date 2024-03-24

Version: 1.2.1

EAN: 87 12581 63767 5

© 2024 Koninklijke Philips N.V.  
All Rights reserved.

Specifications are subject to change without notice.  
Trademarks are the property of Koninklijke Philips N.V.  
or their respective owners.

[www.philips.com](http://www.philips.com)