



Philips
Professional LCD TV

19" Pro+
LCD
integrated digital



19HFL3340D

More guest comfort

Philips Digital Hospitality LCD TV

This modern Hospitality TV brings more guest convenience to the room and can allow guests to connect their own devices. As it is HD ready and digital it prepares you for the future and can offer guests the latest digital services.

Best total cost of ownership

- Set-top box compatible
- USB cloning of all settings for quick installation

Sustainable and safe

- Eco-friendly design and flame-retardant housing

Differentiating guest experience

- Volume limitation
- One combined channel list for Analogue and Digital channels
- Easy-to-use Hospitality Remote Control
- Philips Connectivity Panel compatible to enjoy guest devices

Advanced hotel features and future proof

- Switch On Channel Programming
- Welcome message on screen display
- HD Ready with integrated DVB-T tuner

PHILIPS

Highlights

Welcome message

A welcome greeting is displayed each time the TV set is switched on.

Switch On Channel Programming

Perfect for in-house advertising or information channels as it allows a predefined channel to be shown when the TV is turned on.

HD Ready with DVB-T tuner

Have guests enjoy the exceptional picture quality of High Definition pictures and be fully prepared for HD sources like HDTV set-top boxes. The TV is able to accept analogue YPbPr signals, as well as the highest quality uncompressed Digital signals via DVI or HDMI. The Digital signals will support HDCP copy protection. With the integrated DVB-T tuner the TV can offer Digital Terrestrial TV channels alongside the existing analogue channels. It also allows guests to listen to digital radio stations in high-quality sound without the extra investment in radio receivers.

One combined channel list

One integrated channel list for digital and analogue channels. This allows the guest to flick seamlessly between Analogue and Digital channels.

Hospitality Remote Control

This stylish remote control is especially designed for hospitality usage. For an easy-to-use experience for the guest, the most important buttons and functions are conveniently placed on the remote. In addition, most Hospitality remote controls come with an anti-theft battery provision, a feature that contributes to efficient hotel operations.

Volume limitation

This feature predefines the volume range within which the TV set is allowed to operate, preventing excessive volume adjustments and disturbance of neighbouring guests.

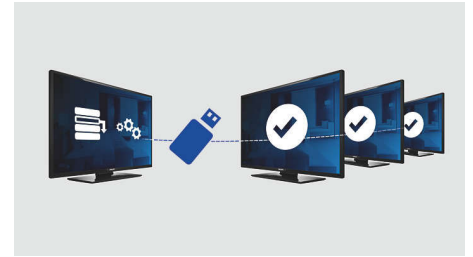
Connectivity Panel compatible

This TV works seamlessly with Philips Connectivity Panels. The guest can easily connect and enjoy media from a PC, MP3 player, DVD player, camcorder and various other devices. With autosensing, the Connectivity Panel and the TV will automatically switch to display the content from the connected guest device.

Set-top box compatible

This hotel TV can be connected to a set-top box offering power on scart and the Serial Express Lite protocol.

USB Cloning



Provides the ability to easily copy all programming and channel programming settings from one TV into other TV sets in less than a minute. The feature ensures uniformity between TV sets and significantly reduces installation time and costs.

Eco-friendly design

Sustainability is integral to the way Philips does business. Philips TVs are designed and produced according to our EcoDesign principles aimed at minimising overall environmental impact, through lower power consumption, removal of hazardous substances, lower weight, more efficient packaging and better recyclability. Philips TVs also have a special housing of flame-retardant material. Independent tests carried out by emergency fire services have shown that whereas TVs can sometimes intensify fires caused by external sources, Philips TVs will not contribute to a fire.

Specifications

Picture/Display

- Aspect ratio: Widescreen
- Diagonal screen size (inch): 19 inch
- Diagonal screen size (metric): 48 cm
- Panel resolution: 1680 x 1050p
- Brightness: 300 cd/m²
- Picture enhancement: 3/2 - 2/2 motion pull down, 2D Combfilter, Active Control, Black stretch, Blue stretch, Crystal Clear III, Digital Noise Reduction, Motion adaptive de-interlacing, Progressive scan, Automatic skin tone correction, Dynamic contrast enhancement, White stretch, Green stretch
- Contrast ratio (typical): 1000:1
- Display screen type: LCD WXGA+ Active Matrix TFT
- Response time (typical): 6 ms
- Viewing angle: 170° (H)/160° (V)
- Screen enhancement: Anti-Reflection coated screen

Supported Display Resolution

- Computer formats: 640 x 480, 60 Hz, 800 x 600, 60 Hz, 1024 x 768, 60 Hz, 1280 x 1024, 60 Hz
- Video formats: 480i, 60 Hz, 480p, 60 Hz, 576i, 50 Hz, 576p, 50 Hz, 1080i, 50, 60 Hz, 720p, 50, 60 Hz

Tuner/Reception/Transmission

- Aerial Input: 75 ohm coaxial (IEC75)
- Tuner bands: Hyperband, S-Channel, UHF, VHF
- TV system: PAL I, PAL B/G, PAL D/K, SECAM B/G, SECAM D/K, SECAM L/L'
- Digital TV: DVB Terrestrial*
- Number of Pre-set Channels: 1000
- Video Playback: PAL, SECAM, NTSC

Convenience

- Ease of Installation: Advanced Hotel Mode, Fine Tuning, PLL Digital Tuning, Programme Name, Cloning of TV settings via USB, Installation menu locking, Security menu access, Keyboard lock-out, Auto Programme Naming, Automatic Channel Install (ACI), Automatic Tuning System (ATS), Autostore, Plug and Play
- Ease of Use: Auto Volume Leveller (AVL), 1 channel list analogue/digital, On-Screen Display, Programme List, Side Control
- Clock: Sleep Timer
- Comfort: Hotel Guest features, Welcome

- message, Switch on channel, Volume limitation, Sleep timer
- Screen Format Adjustments: 4:3, Movie expand 14:9, Movie expand 16:10, Widescreen, Subtitle Zoom, Super Zoom
- Electronic Programme Guide: 8-day Electronic Programme Guide, Now + Next EPG
- Remote Control: low battery detection, battery anti-theft protection
- Interactive hotel features: Connectivity panel compatible
- Remote control type: 22AV1104 (RC6)
- Prison mode: Teletext and MHEG disable
- Teletext: 100-page Smart Text
- Other convenience: Kensington lock
- Firmware upgradeable: Firmware upgradeable via USB
- Picture in Picture: Text dual screen

Healthcare

- Control: Multi remote control, Pendant control via IR-link
- Safety: Earthed power cord
- Convenience: Headphone out

Sound

- Output power (RMS): 2 x 3 W
- Sound System: Mono, Stereo
- Sound Enhancement: Auto Volume Leveller, Incredible Surround, Smart Sound

Loudspeakers

- Built-in speakers: 2

Connectivity

- Connectivity Enhancements: Fast Infrared loop through, Serial Xpress interface, Power on scart
- EasyLink (HDMI-CEC): One touch play, System standby
- Front/Side connections: USB, Audio L/R in, CVBS in, HDMI v1.3, Headphones Out
- Ext 1 Scart: Audio L/R, CVBS in/out, RGB
- HDMI 1: HDMI v1.3
- Other connections: Common Interface, PC Audio in, PC-In VGA
- Ext 3: Audio L/R in, YPbPr

Power

- Mains power: 100-240 V, 50/60 Hz

- Ambient temperature: 5°C to 35°C
- Power consumption: 46.5 W
- Standby power consumption: ≤ 0.3 W

Green Specifications

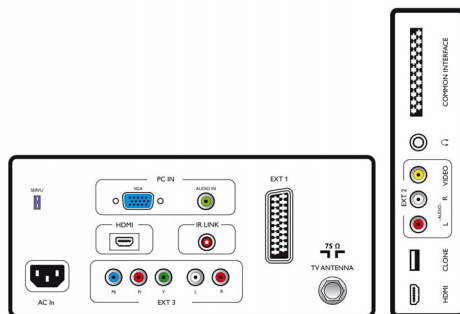
- Safety: Flame-retardant housing

Accessories

- Included accessories: Remote Control, Batteries for remote control, Power cord, Tabletop tilt stand, Warranty Leaflet
- Optional accessories: Set up Remote RC2573GR, Mounting brackets/stands

Dimensions

- Set Width: 468 mm
- Set Height: 349 mm
- Set Depth: 69 mm
- Product weight: 3.9 kg
- Set width (with stand): 468 mm
- Set height (with stand): 392 mm
- Set depth (with stand): 166 mm
- Product weight (+stand): 4.4 kg
- Box width: 512 mm
- Box height: 458 mm
- Box depth: 136 mm
- Weight incl. Packaging: 5.84 kg
- Wall-mount compatible: 100 x 100 mm



Issue date 2024-03-24

Version: 1.3.13

EAN: 87 12581 43718 3

© 2024 Koninklijke Philips N.V.
All Rights reserved.

Specifications are subject to change without notice.
Trademarks are the property of Koninklijke Philips N.V.
or their respective owners.

www.philips.com

* For information on DVB-T enrolled countries, please ask your Philips contact.