

Philips
professional flat TV

20"
LCD

20HF4003F



Flat TV with Hotel Mode

and Crystal Clear picture enhancement

This LCD TV offers a razor sharp image with vivid colours. Combined with the integrated Hospitality features it maximises management efficiency while perfect guest comfort is guaranteed.

One-touch convenience

- PC input lets you also use your TV as a PC monitor
- Smart Picture and Smart Sound to personalise your viewing
- 10 page Smart Text for fast access to teletext.

Stylish design

- Matching stand with elegant design included

Breathtaking natural pictures

- Crystal Clear improves picture depth
- Progressive Scan component video for optimised image quality
- 2D Combfilter sharpens images for finer detail

Hotel Mode

- Front Controls Locking
- Volume limitation
- Switch On Channel Programming
- Installation menu locking

PHILIPS

Highlights

Installation menu locking

Prevents unauthorised access to installation and configuration settings, to ensure maximum guest convenience and avoid unnecessary reprogramming costs.

Front Controls Locking

Prevents unauthorised access to TV functions

Volume limitation

This feature predefines the volume range within which the TV set is allowed to operate, preventing excessive volume adjustments and disturbance of neighbouring guests.

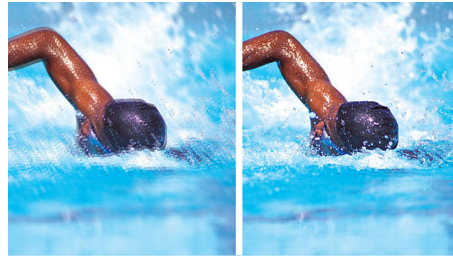
Switch On Channel Programming

Perfect for in-house advertising or information channels as it allows a predefined channel to be shown when the TV is turned on.

Crystal Clear

Combining picture enhancements like Contrast plus and colour improvement, Crystal Clear improves picture depth.

Progressive Scan



Progressive Scan doubles the vertical resolution of the image resulting in a noticeably sharper picture. Instead of sending a field comprising the odd lines to the screen first, followed by the field with the even lines, it writes both fields at the same time. A full image is created instantaneously, using the maximum resolution. At such a speed, your eye perceives a sharper picture with no line structure.

2D Combfilter

The 2D combfilter separates chrominance (colour) from luminance (brightness) information in the video signal for independent

processing to improve picture resolution and minimise distortion.

Smart Picture and Smart Sound

Philips pre-set modes for Smart Picture and Smart Sound provide you with direct access via a single key on the remote control. You can select optimised picture and sound settings for the various picture and sound modes.

10-page Smart Text

Teletext is a common system transmitted by most broadcasters. The 10-page smart text feature gives you fast access to information when changing pages.

PC input

With PC input you can connect your TV to a computer and use the TV as a PC monitor.

Tabletop stand included

A tabletop stand with matching design is packed with the set.

Specifications

Picture/Display

- Aspect ratio: 4:3
- Diagonal screen size (inch): 20 inch
- Diagonal screen size (metric): 51 cm
- Panel resolution: 800 x 600p
- Brightness: 450 cd/m²
- Picture enhancement: 2D Combfilter, Sharpness Adjustment, Colour Temperature Adjustment, Crystal Clear, Progressive scan
- Contrast ratio (typical): 500:1
- Display screen type: LCD SVGA Active Matrix TFT
- Response time (typical): 16 ms
- Viewing angle (horizontal): 160 degree
- Viewing angle (vertical): 120 degree
- Screen enhancement: Anti-Reflection coated screen

Supported Display Resolution

- Computer formats: 640 x 480, 60, 67, 72, 75 Hz, 1024 x 768, 60, 70, 75 Hz
- Video Formats: 640 x 480i - 1Fh, 720 x 576i - 1Fh, 640 x 480p - 2Fh, 720 x 576p - 2Fh, 1280 x 720p - 3Fh

Tuner/Reception/Transmission

- Aerial Input: 75 ohm coaxial (IEC75)
- Tuner bands: Hyperband, S-Channel, UHF, VHF
- TV system: PAL, PAL B/G, PAL D/K, PAL I, SECAM, SECAM B/G, SECAM D/K, SECAM L/L'
- Number of Pre-set Channels: 100
- Video Playback: NTSC, PAL, SECAM
- Tuner Display: PLL

Convenience

- Ease of Installation: Fine Tuning, PLL Digital Tuning, Programme Name, Auto Programme Naming, Automatic Channel Install (ACI), Automatic Tuning System (ATS), Autostore, Plug and Play, Sorting
- Ease of Use: Smart Picture, Smart Sound, Auto Volume Leveller (AVL), On-Screen Display, Menu Control, Programme List
- Clock: Sleep Timer
- Comfort: Hotel Guest features
- Screen Format Adjustments: 16:9 compress, 4:3, 4:3 expand

- Remote Control: TV
- Remote control type: RCFE05SMU00/RCFE05ZAU00
- Teletext: 10-page Smart Text

Sound

- Equalizer: 5-bands
- Output power (RMS): 2 x 5 W
- Sound System: Nicam Stereo, Virtual Dolby Surround
- Sound Enhancement: Dynamic Bass Enhancement

Loudspeakers

- Built-in speakers: 2

Connectivity

- Number of Scarts: 1
- Front/Side connections: S-video in, CVBS in, Headphones Out, Audio in
- Ext 1 Scart: Audio L/R, CVBS in/out, RGB
- Other connections: Antenna IEC75, PC Audio in, DVI-I

Power

- Mains power: AC 90 V–240 V 50/60 Hz
- Ambient temperature: 5°C to 40°C
- Power consumption: 55 W
- Standby power consumption: 1.5 W

Accessories

- Included accessories: Tabletop stand, Power cord, Remote Control, User Manual, Quick start guide, Registration card

Dimensions

- Set Width: 583 mm
- Set Height: 386 mm
- Set Depth: 87 mm
- Box width: 659 mm
- Box height: 565 mm
- Box depth: 211 mm
- Weight incl. Packaging: 11.5 kg
- Width (with base): 583 mm
- Height (with base): 433 mm
- Depth (with base): 217 mm
- Set weight: 8.5 kg

