

Philips
Professional LCD TV

22" Pro+
LCD
integrated digital

22HFL3350D



More guest comfort

Philips Digital Hospitality TV with clock

This modern Hospitality TV brings more guest convenience to the room and can allow guests to connect their own devices. As it is HD ready and digital it prepares you for the future and can offer guests the latest digital services.

Best total cost of ownership

- Set-top box compatible
- USB cloning of all settings for quick installation

Sustainable and safe

- Eco-friendly design and flame-retardant housing

Differentiating guest experience

- Volume limitation
- Integrated clock display with wake-up and message alarm
- One combined channel list for Analogue and Digital channels
- Easy-to-use Hospitality Remote Control
- Philips Connectivity Panel compatible to enjoy guest devices

Advanced hotel features and future proof

- Switch On Channel Programming
- Welcome message on screen display
- HD Ready with integrated DVB-T tuner

PHILIPS

Highlights

Welcome message

A welcome greeting is displayed each time the TV set is switched on.

Switch On Channel Programming

Perfect for in-house advertising or information channels as it allows a predefined channel to be shown when the TV is turned on.

HD Ready with DVB-T tuner

Have guests enjoy the exceptional picture quality of High Definition pictures and be fully prepared for HD sources like HDTV set-top boxes. The TV is able to accept analogue YPbPr signals, as well as the highest quality uncompressed Digital signals via DVI or HDMI. The Digital signals will support HDCP copy protection. With the integrated DVB-T tuner the TV can offer Digital Terrestrial TV channels alongside the existing analogue channels. It also allows guests to listen to digital radio stations in high-quality sound without the extra investment in radio receivers.

Integrated clock display

The built-in clock display, which is also a wake-up alarm, eliminates the need to invest in an additional clock with cables and connections in the room.

One combined channel list

One integrated channel list for digital and analogue channels. This allows the guest to flick seamlessly between Analogue and Digital channels.

Hospitality Remote Control

This stylish remote control is especially designed for hospitality usage. For an easy-to-use experience for the guest, the most important buttons and functions are conveniently placed on the remote. In addition, most Hospitality remote controls come with an anti-theft battery provision, a feature that contributes to efficient hotel operations.

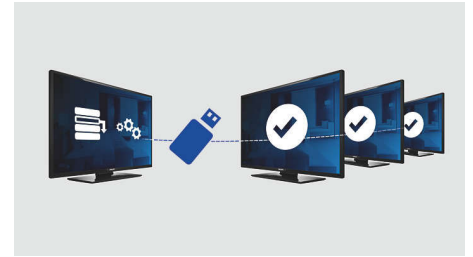
Volume limitation

This feature predefines the volume range within which the TV set is allowed to operate, preventing excessive volume adjustments and disturbance of neighbouring guests.

Connectivity Panel compatible

This TV works seamlessly with Philips Connectivity Panels. The guest can easily connect and enjoy media from a PC, MP3 player, DVD player, camcorder and various other devices. With autosensing, the Connectivity Panel and the TV will automatically switch to display the content from the connected guest device.

USB Cloning



Provides the ability to easily copy all programming and channel programming settings from one TV into other TV sets in less than a minute. The feature ensures uniformity between TV sets and significantly reduces installation time and costs.

Set-top box compatible

This hotel TV can be connected to a set-top box offering power on scart and the Serial Express Lite protocol.

Eco-friendly design

Sustainability is integral to the way Philips does business. Philips TVs are designed and produced according to our EcoDesign principles aimed at minimising overall environmental impact, through lower power consumption, removal of hazardous substances, lower weight, more efficient packaging and better recyclability. Philips TVs also have a special housing of flame-retardant material. Independent tests carried out by emergency fire services have shown that whereas TVs can sometimes intensify fires caused by external sources, Philips TVs will not contribute to a fire.

Specifications

Picture/Display

- Aspect ratio: Widescreen
- Diagonal screen size (inch): 22 inch
- Diagonal screen size (metric): 56 cm
- Panel resolution: 1680 x 1050p
- Brightness: 300 cd/m²
- Picture enhancement: 3/2 - 2/2 motion pull down, 3D Combfilter, Active Control, Black stretch, Blue stretch, Colour Enhancement, Digital Noise Reduction, Motion adaptive de-interlacing, Progressive scan, Automatic skin tone correction, Dynamic contrast enhancement, White stretch, Green stretch, Pixel Plus HD, Colour Transient Improvement, Luminance Transient Improver
- Contrast ratio (typical): 1000:1
- Display screen type: LCD WXGA Active Matrix TFT
- Dynamic screen contrast: 30000:1
- Response time (typical): 5 ms
- Viewing angle (horizontal): 170 degree
- Viewing angle (vertical): 160 degree
- Screen enhancement: Anti-Reflection coated screen

Supported Display Resolution

- Computer formats: 640 x 480, 60 Hz, 800 x 600, 60 Hz, 1024 x 768, 60 Hz, 1280 x 1024, 60 Hz
- Video formats: 480i, 60 Hz, 480p, 60 Hz, 1080i, 50, 60 Hz, 576i, 50 Hz, 576p, 50 Hz, 720p, 50, 60 Hz

Tuner/Reception/Transmission

- Aerial Input: 75 ohm coaxial (IEC75)
- Tuner bands: Hyperband, S-Channel, UHF, VHF
- TV system: PAL I, PAL B/G, PAL D/K, SECAM B/G, SECAM D/K, SECAM L/L', DVB COFDM 2K/8K
- Digital TV: DVB Terrestrial*
- Number of Pre-set Channels: 250
- Video Playback: PAL, SECAM, NTSC
- Tuner Display: PLL

Multimedia Applications

- Multimedia connections: USB
- Playback Formats: MP3, JPEG Still pictures, Slideshow files (.alb)

Convenience

- Ease of Installation: Advanced Hotel Mode, Fine Tuning, PLL Digital Tuning, Programme Name, Cloning of TV settings via USB, Installation menu locking, Security menu access, Keyboard lock-out
- Ease of Use: Auto Volume Leveller (AVL), 1 channel list analogue/digital, Smart Picture, Smart Sound
- Clock: Integrated LCD Clock Display, Sleep Timer, Wake-up Clock
- Clock Enhancements: Synchro Time via TXT/DVB
- Comfort: Hotel Guest features, Auto power on, Welcome message, Message indicator, Switch on channel, Volume limitation, Fast start-up
- Screen Format Adjustments: 4:3, Full screen, Movie expand 14:9, Movie expand 16:9, Widescreen, Subtitle Zoom, Super Zoom, Auto Format
- Electronic Programme Guide: Now + Next EPG
- Remote Control: low battery detection, battery anti-theft protection
- Interactive hotel features: Connectivity panel compatible
- Remote control type: 22AV1104/10 (RC6)
- Prison mode: Teletext and MHEG disable
- Teletext: 1000-page Smart Text
- Other convenience: Kensington lock
- Firmware upgradeable: Firmware upgradeable via USB, Local upgrade total TV softw.

Healthcare

- Control: Multi remote control, Pendant control via IR-link
- Safety: Double isolation Class II

Sound

- Equalizer: 5-bands
- Output power (RMS): 2 x 5 W
- Sound System: Mono, Stereo, Nicam Stereo, Dolby Digital (AC-3), Virtual Dolby Digital, BBE
- Sound Enhancement: Auto Volume Leveller, Incredible Surround, Smart Sound

Loudspeakers

- Built-in speakers: 2

Connectivity

- Connectivity Enhancements: Fast Infrared loop through, Serial Xpress interface, Power on scart, USB2.0
- Number of Scarts: 2
- Front/Side connections: Audio L/R in, CVBS in, USB 2.0, HDMI v1.3, S-video in
- Ext 1 Scart: Audio L/R, CVBS in/out, RGB
- Ext 2 Scart: Audio L/R, CVBS in/out
- Other connections: Common Interface, S/PDIF out (coaxial), Analogue audio Left/Right out
- Ext 3: Audio L/R in, YPbPr
- Ext 4: HDMI v1.3
- Ext 5: HDMI v1.3
- Ext 6: HDMI v1.3

Power

- Mains power: 220-240 V, 50/60 Hz
- Ambient temperature: 5°C to 35°C
- Power consumption: 55 W
- Standby power consumption: < 2 W (w. clock)
- Active stand-by consumption: 20 W
- Passive stand-by consumption: 1.2 W

Green Specifications

- Safety: Flame-retardant housing

Accessories

- Included accessories: Remote Control, Batteries for remote control, Power cord, Tabletop tilt

Specifications

- stand, Warranty Leaflet
- Optional accessories: Set up Remote RC2573GR,
Wall mount (tilt) 22AV3100/10

Dimensions

- Set Width: 534 mm
- Set Height: 397 mm
- Set Depth: 92 mm
- Product weight: 6 kg
- Set width (with stand): 534 mm
- Set height (with stand): 442 mm
- Set depth (with stand): 181 mm
- Product weight (+stand): 6.5 kg
- Box width: 580 mm
- Box height: 510 mm
- Box depth: 137 mm
- Weight incl. Packaging: 7.77 kg
- Wall-mount compatible: 100 x 100 mm



Issue date 2024-03-24

Version: 5.4.12

EAN: 87 12581 43675 9

© 2024 Koninklijke Philips N.V.
All Rights reserved.

Specifications are subject to change without notice.
Trademarks are the property of Koninklijke Philips N.V.
or their respective owners.

www.philips.com

* For information on DVB-T enrolled countries, please ask your
Philips contact.