

Philips  
Professional LED TV

**32" Studio**

LED  
DVB-T/C MPEG 2/4

**32HFL2808D**



## Great value in a modern design

with power-saving LED technology

With this energy efficient Hospitality LED TV, you will enjoy efficient installation via USB cloning and dedicated hospitality features like menu and control locking.

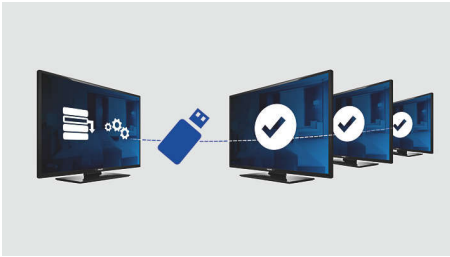
### **Advanced hotel features and future proof**

- Brilliant LED images with low power consumption
- Volume limitation
- Welcome message on screen display
- USB cloning of all settings for quick installation
- USB for multimedia playback
- Integrated Connectivity Panel
- Low power consumption
- Installation menu locking
- Front/Side controls locking

**PHILIPS**

# Highlights

## USB Cloning



Provides the ability to easily copy all programming and channel programming settings from one TV into other TV sets in less than a minute. The feature ensures uniformity between TV sets and significantly reduces installation time and costs.

## Volume limitation

This feature predefines the volume range within which the TV set is allowed to operate, preventing excessive volume adjustments and disturbance of neighbouring guests.

## Installation menu locking

Prevents unauthorised access to installation and configuration settings, to ensure maximum guest convenience and avoid unnecessary reprogramming costs.

## Front/Side controls locking

Selecting the option in the setup menu to lock or unlock access to the front and side controls of the TV prevents unauthorised access to the TV menu, saving the hotelier the time and effort of re-installing.

## Low power consumption

Philips TVs are designed to minimise power consumption. This will not only reduce environmental impact but also lower operating costs.

## Integrated Connectivity Panel

The Integrated Connectivity Panel allows your guests to seamlessly connect their personal devices to your TV without the need for an external Connectivity Panel.

## LED



The most advanced LED lighting technology in this TV combines an eye-catching minimalistic design with stunning image quality as well as

the lowest power consumption in its category. On top of that, LED lighting technology does not contain any hazardous materials. Thus, with LED backlight you can enjoy low power consumption, high brightness, incredible contrast, sharpness and vibrant colours.

## USB (photos, music, video)



Connect your USB memory-stick, digital camera, mp3 player or other multimedia device to the USB port at the side of your TV to enjoy photos, videos and music with the easy-to-use on screen content browser.

## Welcome message

A welcome greeting is displayed each time the TV set is switched on.



# Specifications

## Picture/Display

- Aspect ratio: 16:9
- Diagonal screen size (inch): 32 inch
- Diagonal screen size (metric): 81 cm
- Colour cabinet: Black
- Display: LED HD TV
- Panel resolution: 1366 x 768p
- Brightness: 300 cd/m<sup>2</sup>
- Picture enhancement: Digital Crystal Clear, 100 Hz Perfect Motion Rate
- Dynamic screen contrast: 100,000:1
- Viewing angle: 178° (H)/178° (V)

## Supported Display Resolution

- Computer inputs: up to 1920 x 1080 @ 60 Hz
- Video inputs: 24, 25, 30, 50, 60 Hz, up to 1920 x 1080p

## Tuner/Reception/Transmission

- TV system: PAL, SECAM
- Digital TV: DVB-C MPEG4\*, DVB-T MPEG4\*, DVB-C MPEG2\*, DVB-T MPEG2\*
- Video Playback: PAL, SECAM, NTSC

## Multimedia Applications

- Multimedia connections: USB
- Video Playback Formats: H264/MPEG-4 AVC, MPEG-1, MPEG-2, MPEG-4, WMV9/VC1, Containers: AVI, MKV
- Music Playback Formats: AAC, MP3
- Picture Playback Formats: JPEG

## Convenience

- Ease of Installation: Automatic Tuning System (ATS), Automatic Channel Install (ACI), Auto Programme Naming, Autostore, Cloning of TV settings via USB, Installation menu locking, Security menu access
- Ease of Use: Auto Volume Leveller (AVL), 1 Ch-List (Analogue+DVB-T or C), On-Screen Display, Programme List, Side Control
- Comfort: Hotel Guest features, Welcome Page (.png), Switch on channel, Volume limitation, Sleep timer
- Screen Format Adjustments: 4:3, Movie expand 14:9, Movie expand 16:9, Widescreen, Subtitle Zoom, Super Zoom, Autofill, Autozoom, Unscaled
- Electronic Programme Guide: 8-day Electronic Programme Guide, Now + Next EPG
- Prison mode: TXT, USB Subtitle blocking
- Teletext: 1000-page Smart Text
- Firmware upgradeable: Firmware upgradeable via USB
- Remote control: 22AV1107A/12

## Healthcare

- Control: Multi remote control
- Convenience: Headphone out

## Sound

- Output power (RMS): 12W (2 x 6W)
- Sound Enhancement: Auto Volume Leveller, Incredible Surround, Treble and Bass Control, Clear Sound

## Loudspeakers

- Built-in speakers: 2

## Connectivity

- Number of AV connections: 1
- Number of HDMI connections: 2
- HDMI features: Audio Return Channel
- Number of scarts (RGB/CVBS): 1
- Number of USBs: 1
- Front/Side connections: Audio L/R in, CVBS in, Headphones Out, USB 2.0
- Other connections: Antenna IEC75, S/PDIF out (coaxial), PC-In VGA, Common Interface Plus (CI+)

## Power

- Mains power: AC 220-240 V; 50-60 Hz
- Ambient temperature: 5°C to 35°C
- Standby power consumption: <math>\leq 0.3</math> W
- Energy Label Class: A
- EU Energy Label power: 41 W
- Power Saving Features: Eco mode, Picture mute (for radio)
- Off mode power consumption: <math>\leq 0.3</math>
- Annual energy consumption: 59 kWh

## Accessories

- Included accessories: Remote Control, Batteries for remote control, Power cord, Tabletop stand, Warranty Leaflet, Legal and safety brochure
- Optional accessories: Set up remote 22AV8573/00

## Dimensions

- Set Width: 743 mm
- Set Height: 451 mm
- Set Depth: 88.5 mm
- Product weight: 6.3 kg
- Set width (with stand): 743 mm
- Set height (with stand): 489 mm
- Set depth (with stand): 185 mm
- Product weight (+stand): 6.9 kg
- Box width: 915 mm
- Box height: 585 mm
- Box depth: 145 mm
- Weight incl. Packaging: 9.5 kg
- Wall-mount compatible: 200 x 100 mm



Issue date 2024-04-01

Version: 9.1.6

EAN: 87 12581 68308 5

© 2024 Koninklijke Philips N.V.  
All Rights reserved.

Specifications are subject to change without notice.  
Trademarks are the property of Koninklijke Philips N.V.  
or their respective owners.

[www.philips.com](http://www.philips.com)