



Philips  
Professional LED LCD TV

**26" PrimeSuite**

LED  
DVB-T/C MPEG 2/4

**26HFL4372D**

## Versatile and outstanding in every way

### Philips Hospitality LED LCD TV

This modern Hospitality TV brings more guest convenience to the room. It also allows you to show HD channels to your guests in both standalone and interactive set-up.

#### **Sustainable and safe**

- Low power consumption
- Eco-friendly design and flame-retardant housing

#### **Differentiating guest experience**

- Integrated clock display with wake-up and message alarm
- Advanced EPG and channel list
- USB for fantastic multimedia playback

#### **Advanced hotel features and future proof**

- Brilliant LED images with low power consumption
- MyChoice compatibility for recurring revenues
- Theme TV for easy location of guests' own national channels
- Programmable Switch On Channel
- VSecure for digital content protection in hotels
- Integrated Connectivity Panel
- One combined channel list for Analogue and Digital channels

**PHILIPS**

# Highlights

## LED



The most advanced LED lighting technology in this TV combines an eye-catching minimalistic design with stunning image quality as well as the lowest power consumption in its category. On top of that, LED lighting technology does not contain any hazardous materials. Thus, with LED backlight you can enjoy low power consumption, high brightness, incredible contrast, sharpness and vibrant colours.

## MyChoice compatible

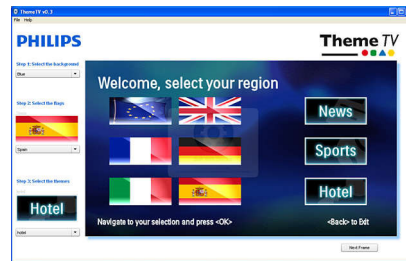


MyChoice offers a simple and low-cost way to offer your guests premium TV channels. At the same time it delivers an additional revenue stream which allows you to recover your initial TV investment.

## Integrated Connectivity Panel

The Integrated Connectivity Panel allows your guests to seamlessly connect their personal devices to your TV without the need for an external Connectivity Panel.

## Theme TV



Theme TV offers an advanced user interface that enables your guests to navigate the guest menu to find their own country's channels, news and hotel information easily without the need of an interactive entertainment system.

## VSecure

To show HD premium content to the guest there is a need for strict content security precautions from the content industry. Philips has developed a total solution for HD content security in hotels, consisting of VSecure for HD content protection and NexGuard for HD forensic watermarking.

## Integrated clock display

The built-in clock display, which is also a wake-up alarm, eliminates the need to invest in an additional clock with cables and connections in the room.

## Installation menu locking

Prevents unauthorised access to installation and configuration settings, to ensure maximum guest convenience and avoid unnecessary reprogramming costs.

## Low power consumption

Philips TVs are designed to minimise power consumption. This will not only reduce environmental impact but also lower operating costs.

## Eco-friendly design

Sustainability is integral to the way Philips does business. Philips TVs are designed and

produced according to our EcoDesign principles aimed at minimising overall environmental impact, through lower power consumption, removal of hazardous substances, lower weight, more efficient packaging and better recyclability. Philips TVs also have a special housing of flame-retardant material. Independent tests carried out by emergency fire services have shown that whereas TVs can sometimes intensify fires caused by external sources, Philips TVs will not contribute to a fire.

## Programmable Switch On Channel

Perfect for in-house advertising or information channels as it allows a predefined channel to be shown when the TV is turned on.

## Advanced EPG and channel list

The attractive EPG and channel list include intuitive buttons with clear guiding graphics to easily locate your favourite channels.

## One combined channel list

One integrated channel list for digital and analogue channels. This allows the guest to flick seamlessly between Analogue and Digital channels.

## USB (multimedia)



The USB connector allows access to jpeg photos, MP3 music and video files on most USB sticks (USB memory-class device). Plug the USB into the slot on the side of the TV and access the multimedia content using the easy on-screen content browser. You can now view and share your videos, photos and music.

# Specifications

## Picture/Display

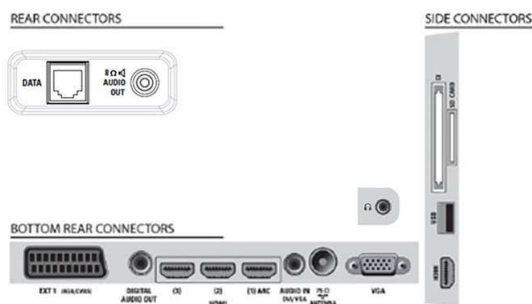
- Aspect ratio: Widescreen
- Diagonal screen size (inch): 26 inch
- Diagonal screen size (metric): 66 cm
- Colour cabinet: High gloss black deco front with black cabinet
- Panel resolution: 1366 x 768p
- Brightness: 400 cd/m<sup>2</sup>
- Picture enhancement: 3/2 - 2/2 motion pull down, 3D Combfilter, Active Control, Colour

- Enhancement, Colour Transient Improvement, Digital Noise Reduction, Luminance Transient Improver, Progressive scan, Sharpness Adjustment, 3D MA deinterlacing, Automatic skin tone correction, Dynamic contrast enhancement, 1080p 24/25/30 Hz processing, 1080p 50/60 Hz processing, Pixel Plus HD
- Display screen type: LCD WXGA+ Active Matrix TFT
- Dynamic screen contrast: 150,000:1

- Response time (typical): 8 ms
- Viewing angle: 178° (H)/178° (V)
- Peak Luminance ratio: 90 %
- Screen enhancement: Anti-Reflection coated screen

## Supported Display Resolution

- Computer formats: 640 x 480, 60 Hz, 800 x 600, 60 Hz, 1024 x 768, 60 Hz, 1280 x 1024, 60 Hz, 1280



# Specifications

- x 720, 60 Hz, 1280 x 768, 60 Hz, 1360 x 768, 60 Hz
- Video formats: 480i, 60 Hz, 480p, 60 Hz, 576i, 50 Hz, 576p, 50 Hz, 1080i, 50, 60 Hz, 720p, 50, 60 Hz, 1080p, 24, 50, 60 Hz, 1080p, 24, 25, 30, 50, 60 Hz

## Tuner/Reception/Transmission

- Aerial Input: 75 ohm coaxial (IEC75)
- Tuner bands: Hyperband, S-Channel, UHF, VHF
- TV system: PAL I, PAL B/G, SECAM B/G, SECAM L/L', DVB COFDM 2K/8K
- Digital TV: DVB-C MPEG4, DVB-T MPEG4
- Number of Pre-set Channels: 999
- Video Playback: PAL, SECAM, NTSC

## Multimedia Applications

- Multimedia connections: USB
- Playback Formats: MP3, JPEG Still pictures, Slideshow files (.alb)
- Video Playback Formats: H264/MPEG-4 AVC

## Convenience

- Ease of Installation: Plug and Play, Advanced Hotel Mode, Automatic Tuning System (ATS), Fine Tuning, PLL Digital Tuning, Automatic Channel Install (ACI), Programme Name, Auto Programme Naming, Autostore, Cloning of TV settings via USB, Installation menu locking, Security menu access, Keyboard lock-out
- Ease of Use: Auto Volume Leveller (AVL), 1 channel list analogue/digital, On-Screen Display, Programme List, Side Control, Graphical User Interface
- Clock: Dimmable, Integrated LCD Clock Display, Sleep Timer, Wake-up Clock
- Clock Enhancements: Synchro Time via TXT/DVB
- Comfort: Hotel Guest features, Auto power on, Green/Fast startup, Welcome message, Message indicator, Switch on channel, Volume limitation, Sleep timer
- Screen Format Adjustments: 4:3, Movie expand 14:9, Movie expand 16:9, Widescreen, Subtitle Zoom, Super Zoom, Auto Format
- Electronic Programme Guide: 8-day Electronic Programme Guide, Now + Next EPG
- Remote Control: low battery detection, battery anti-theft protection
- Interactive hotel features: Connectivity panel compatible, Block automatic channel update, Block over-the-air SW download, Vsecure
- Remote control type: 22AV1104A/10 (RC6)
- Prison mode: Txt, MHEG, USB, EPG, Sub block
- Teletext: 1000-page Hypertext
- Other convenience: Kensington lock
- Firmware upgradeable: Firmware upgradeable via USB, Firmware upgradeable via RF
- Teletext enhancements: Fast text, Programme information Line

## Healthcare

- Control: Multi remote control, Pendant control via IR-link
- Safety: Double isolation Class II
- Convenience: Headphone out, Independent main

speaker mute

## Sound

- Output power (RMS): 2 x 3 W
- Sound System: Nicam Stereo
- Sound Enhancement: Auto Volume Leveller, Incredible Surround, Smart Sound

## Loudspeakers

- Built-in speakers: 2

## Connectivity

- Connectivity Enhancements: Serial Xpress interface, Fast Infrared loop through, Power on scart, USB2.0
- Number of HDMI connections: 3
- Audio Output - Digital: Coaxial (cinch)
- Number of Scarts: 1
- EasyLink (HDMI-CEC): One touch play, System standby
- Front/Side connections: Audio L/R in, USB 2.0, HDMI v1.3
- Ext 1 Scart: Audio L/R, RGB, CVBS in/out
- HDMI 1: HDMI v1.3
- Other connections: S/PDIF out (coaxial), PC-in VGA + Audio L/R in, Bathroom speaker out, Common Interface Plus (CI+)

## Power

- Mains power: 220-240 V, 50/60 Hz
- Ambient temperature: 5°C to 40°C
- Standby power consumption: 0.23 W
- Power consumption (typical): 46 W
- Annual energy consumption: 46 kWh
- Presence of lead: Yes\*

## Green Specifications

- Safety: Flame-retardant housing
- Low Power Standby
- SmartPower Eco

## Accessories

- Included accessories: Remote Control, Batteries for remote control, Power cord, Tabletop stand, Warranty Leaflet
- Optional accessories: Wall mount (tilt) 22AV3100/10, Set up remote 22AV8573/00

## Dimensions

- Set Width: 671.8 mm
- Set Height: 458.7 mm
- Set Depth: 68 mm
- Product weight: 6.9 kg
- Set width (with stand): 671.8 mm
- Set height (with stand): 521 mm
- Set depth (with stand): 220 mm
- Product weight (+stand): 8.4 kg
- Box width: 800 mm
- Box height: 210 mm
- Box depth: 580 mm
- Wall-mount compatible: 100 x 100 mm



Issue date 2024-03-24

Version: 10.1.5

EAN: 87 12581 54355 6

© 2024 Koninklijke Philips N.V.  
All Rights reserved.

Specifications are subject to change without notice.  
Trademarks are the property of Koninklijke Philips N.V.  
or their respective owners.

[www.philips.com](http://www.philips.com)

\* Annual energy consumption is calculated using the typical power consumption of 4 hours per day, 365 days per year.  
\* This television contains lead only in certain parts or components where no technology alternatives exist in accordance with existing exemption clauses under the RoHS Directive.  
\* Typical on-mode power consumption measured according to IEC62087 Ed 2.