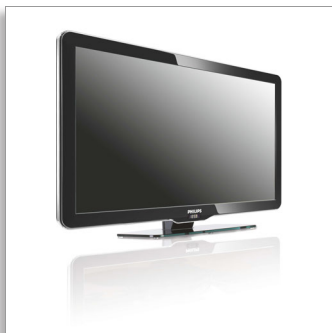




Philips
Professional LCD TV

32" Ultimate HD
LCD
DVB-T/C MPEG4*



32HFL5870D

The ultimate movie experience

Philips Ultimate HD Hospitality LCD TV

This stylish Ultimate HD Hospitality TV offers an end-to-end interactive digital HD solution without the need for a set top box. You can offer your guests a real HD cinema solution to complete their in-room experience.

Best total cost of ownership

- End-to-end cost optimised solution
- VSecure and VTrack for HD content security in hotels

Sustainable and safe

- SmartPower for energy saving
- Eco-friendly design and flame-retardant housing

Integrated system solution and future proof

- Tamper proof SmartCard slot
- Remote software upgrading
- HD LCD display, with a 1366 x 768p resolution

Differentiating guest experience

- Integrated clock display with wake-up and message alarm
- Philips Connectivity Panel compatible to enjoy guest devices
- Pixel Plus HD for better details, depth and clarity
- Theme TV for easy location of guests' own national channels

PHILIPS

Highlights

HD LCD display

This WXGA display with state-of-the-art LCD screen technology gives your guests widescreen HD resolution of 1366 x 768p pixels. It produces brilliant flicker-free progressive scan pictures with optimum brightness and superb colours. This vibrant and sharp image will provide your guests with an enhanced viewing experience.

Integrated SmartCard Slot

The integrated SmartCard slot allows third parties to add new functionality to the TV through application cards, without the need for additional boxes and external connections. The TV can also be connected to external decoders and set-top boxes of all major interactive system providers, through the SerialXpress Control Interface (supporting UART and RS232 protocols) and the SmartPlug Control interface.

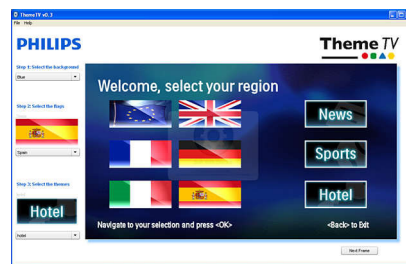
Remote software upgrading

The TV software that controls hotel-specific features can be upgraded remotely through a certified system provider.

Integrated clock display

The built-in clock display, which is also a wake-up alarm, eliminates the need to invest in an additional clock with cables and connections in the room.

Theme TV



Theme TV offers an advanced user interface that enables your guests to navigate the guest menu to find their own country's channels, news and hotel information easily without the need of an interactive entertainment system.

Pixel Plus HD



Pixel Plus HD is a picture processing technology that enables viewers to watch content that is vivid, natural and real. The results are superbly life-like pictures with incredible details and depth from any HD source.

Connectivity Panel compatible

This TV works seamlessly with Philips Connectivity Panels. The guest can easily connect and enjoy media from a PC, MP3 player, DVD player, camcorder and various other devices. With autosensing, the Connectivity Panel and the TV will automatically switch to display the content from the connected guest device.

End-to-end cost optimisation

With the Philips Ultimate HD Hospitality TV you are able to show high definition premium content to your guest without the need for a set top box in the room. This TV ensures you of an end-to-end cost optimised solution as it includes all necessary HD requirements like MPEG 4 reception via DVB-T and/or DVB-C tuner with content protection.

VSecure & VTrack

To show HD premium content to the guest there is a need for strict content security precautions from the content industry. Philips developed a total solution for HD content security in hotels, consisting of VSecure for HD content protection and VTrack for HD forensic watermarking.

SmartPower



The backlight intensity can be controlled and pre-set by the system to reduce the power consumption by up to 50%, which saves substantially on energy costs.

Eco-friendly design

Sustainability is integral to the way Philips does business. Philips TVs are designed and produced according to our EcoDesign principles aimed at minimising overall environmental impact, through lower power consumption, removal of hazardous substances, lower weight, more efficient packaging and better recyclability. Philips TVs also have a special housing of flame-retardant material. Independent tests carried out by emergency fire services have shown that whereas TVs can sometimes intensify fires caused by external sources, Philips TVs will not contribute to a fire.

Specifications

Picture/Display

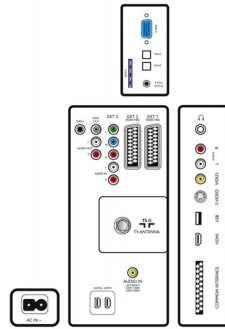
- Aspect ratio: 16:9, Widescreen
- Diagonal screen size (inch): 32 inch
- Diagonal screen size (metric): 81 cm
- Colour cabinet: Black
- Panel resolution: 1366 x 768p
- Brightness: 500 cd/m²
- Picture enhancement: 3/2 - 2/2 motion pull down, 3D Combfilter, Active Control, Black stretch, Blue stretch, Colour Enhancement, Colour Transient

- Improvement, Digital Noise Reduction, Luminance Transient Improver, Motion adaptive de-interlacing, Progressive scan, Automatic skin tone correction, Dynamic contrast enhancement, White stretch, Green stretch, Pixel Plus HD
- Contrast ratio (typical): 1200:1
- Display screen type: LCD WXGA Active Matrix TFT
- Dynamic screen contrast: 30000:1
- Response time (typical): 6 ms

- Viewing angle (horizontal): 176 degree
- Peak Luminance ratio: 100 %
- Viewing angle (vertical): 176 degree
- Screen enhancement: Anti-Reflection coated screen

Supported Display Resolution

- Computer formats: 640 x 480, 60 Hz, 800 x 600, 60 Hz, 1024 x 768, 60 Hz, 1280 x 1024, 60 Hz, 1366



Specifications

x 768, 60 Hz

- Video formats: 480i, 60 Hz, 480p, 60 Hz, 576i, 50 Hz, 576p, 50 Hz, 1080i, 50, 60 Hz, 720p, 50, 60 Hz

Tuner/Reception/Transmission

- Aerial Input: 75 ohm coaxial (IEC75)
- Tuner bands: Hyperband, S-Channel, UHF, VHF
- TV system: PAL I, PAL B/G, PAL D/K, SECAM B/G, SECAM D/K, SECAM L/L', DVB COFDM 2K/8K
- Digital TV: DVB-C MPEG4*, DVB-T MPEG4*
- Number of Pre-set Channels: 250
- Video Playback: PAL, SECAM, NTSC
- Tuner Display: PLL

Multimedia Applications

- Multimedia connections: USB
- Playback Formats: MP3, JPEG Still pictures, Slideshow files (.alb)

Convenience

- Ease of Installation: Advanced Hotel Mode, Fine Tuning, PLL Digital Tuning, Programme Name, Cloning of TV settings via USB, Installation menu locking, Security menu access, Keyboard lock-out
- Ease of Use: Auto Volume Leveller (AVL), 1 channel list analogue/digital
- Clock: Integrated LCD Clock Display, Sleep Timer, Wake-up Clock, Dimmable
- Clock Enhancements: Synchro Time via TXT/DVB
- Comfort: Hotel Guest features, Auto power on, Welcome message, Message indicator, Switch on channel, Volume limitation
- Screen Format Adjustments: 4:3, Full screen, Movie expand 14:9, Movie expand 16:9, Widescreen, Subtitle Zoom, Super Zoom, Auto Format
- Electronic Programme Guide: Now + Next EPG
- Interactive hotel features: Connectivity panel compatible, Block automatic channel update, Block over-the-air SW download, ThemeTV
- Prison mode: Teletext and MHEG disable
- Teletext: 1000-page Smart Text
- Other convenience: Kensington lock
- Firmware upgradeable: Remote upgrade hotel TV softw, Firmware upgradeable via USB, Firmware upgradeable via RF
- Embedded (HD) content security: VSecure, VTrack
- Teletext languages: Western European, Eastern European, Cyrillic

Healthcare

- Control: Multi remote control, Pendant control via IR-link
- Safety: Double isolation Class II
- Convenience: Headphone out, Independent main speaker mute

Sound

- Equalizer: 5-bands
- Output power (RMS): 2 x 15 W
- Sound System: Mono, Stereo, Nicam Stereo, BBE, Dolby Digital (AC-3), Virtual Dolby Digital
- Sound Enhancement: Auto Volume Leveller, Incredible Surround, Smart Sound

Loudspeakers

- Built-in speakers: 2

Connectivity

- Connectivity Enhancements: Serial Xpress interface, SmartPlug Xpress Interface, RJ12 connector, RJ45 connector, SmartCard Expansion Slot, Fast Infrared loop through, HM-Link, External Loudspeaker connector, Power on scart, USB2.0, External Power 12 V/10 W
- Number of HDMI connections: 3
- Number of Scarts: 2
- EasyLink (HDMI-CEC): One touch play, System standby
- Front/Side connections: Audio L/R in, CVBS in, Headphones Out, S-video in, USB 2.0, HDMI v1.3
- Ext 1 Scart: Audio L/R, CVBS in/out, RGB
- Ext 2 Scart: Audio L/R, CVBS in/out
- Other connections: Analogue audio Left/Right out, S/PDIF out (coaxial), Headphone out, PC-In VGA, Common Interface
- Ext 3: Audio L/R in, YPbPr
- Ext 4: HDMI v1.3
- Ext 5: HDMI v1.3
- Ext 6: HDMI v1.3

Power

- Mains power: 220 V - 240 V, 50/60 Hz
- Ambient temperature: 5°C to 40°C
- Power consumption: 130 W
- Standby power consumption: ≤ 2 W (w. clock)
- Annual energy consumption: 155 kWh
- Presence of lead: Yes*
- Mercury content: 60 mg
- Active stand-by consumption: 20 W
- Passive stand-by consumption: 1.2 W

Green Specifications

- Safety: Flame-retardant housing
- Low Power Standby
- SmartPower

Accessories

- Included accessories: Power cord, Tabletop swivel stand, Warranty Leaflet
- Optional accessories: Set up Remote RC2573GR, Guest remote control 22AV1105, Theme TV remote 22AV1107, Wall mount (tilt) 22AV3200/10

Dimensions

- Set Width: 810 mm
- Set Height: 519 mm
- Set Depth: 95 mm
- Product weight: 13 kg
- Set width (with stand): 810 mm
- Set height (with stand): 574 mm
- Set depth (with stand): 220 mm
- Product weight (+stand): 16 kg
- Box width: 975 mm
- Box height: 644 mm
- Box depth: 193 mm
- Weight incl. Packaging: 19 kg
- Wall-mount compatible: 200 x 200 mm



Issue date 2024-03-24

Version: 1.2.6

EAN: 87 12581 48796 6

© 2024 Koninklijke Philips N.V.
All Rights reserved.

Specifications are subject to change without notice.
Trademarks are the property of Koninklijke Philips N.V. or their respective owners.

www.philips.com

* Typical on-mode power consumption measured according to IEC62087 Ed 2.

* Annual energy consumption is calculated using the typical power consumption of 4 hours per day, 365 days per year.

* This television contains lead only in certain parts or components where no technology alternatives exist in accordance with existing exemption clauses under the RoHS Directive.