

Philips Cineos
Professional LCD TV

32"

LCD
integrated digital

32HF9385D



The ultimate guest experience with Ambilight

digital interactive LCD TV

Surprise your guest with the ultimate interactive movie TV. The unique surrounding light effect of Ambilight provides your guest with an unrivalled and more relaxing viewing experience.

Best total cost of ownership

- USB cloning of all settings for quick installation
- Installation menu locking

System ready and future-proof

- Integrated DVB-T tuner for digital TV and Radio
- Serial Xpress control interface for interactive systems

Sustainable and safe

- Eco-friendly design and flame-retardant housing

Great viewing experience and guest comfort

- 2-channel active Ambilight enhances the viewing experience
- USB Connector for easy, instant multimedia playing
- Swivel stand with anti-theft provision
- 100 Hz Clear LCD for superb motion sharpness (3ms)

PHILIPS

Highlights

Ambilight 2 channel



Ambilight makes an impressive contribution to the overall viewing experience by producing ambient light to complement the colours and light intensity of the on-screen image. It adds a new dimension to the viewing experience, completely immersing you into the content you are watching. It creates ambience, stimulates more relaxed viewing and improves perceived picture detail, contrast and colour. Ambilight automatically and independently adapts its colours according to the changing content on the screen.

Integrated DVB-T tuner

The integrated DVB-T tuner lets you receive Digital Terrestrial TV channels, next to the existing analogue channels. It also allows guests to listen to digital radio stations in high quality sound without the extra investment in radio receivers.

Serial Xpress interface

The TV can be connected to external decoders and set-top boxes of all major interactive system providers, through the Serial Xpress Control Interface (UART protocol).

Installation menu locking

Prevents unauthorised access to installation and configuration settings, to ensure maximum guest convenience and avoid unnecessary reprogramming costs.

100 Hz Clear LCD



100 Hz Clear LCD creates extreme motion sharpness for clear and vibrant images even with fast on-screen motion. The Double Frame Rate Insertion works with a high 100 Hz refresh rate. It increases the sharpness of motion reproduction to more than twice that of conventional LCD, resulting in a response time of 3 milliseconds (measured in Perceived Blur-Edge-Width; BEW). This unique Philips technology brings motion sharpness of LCD displays to an unprecedented level.

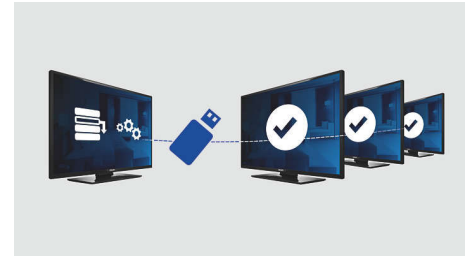
USB multimedia playing

This Philips TV allows the guest to connect a USB stick for easy and instant playing of multimedia content. Playback formats supported are MP3, Slideshow files (.alb) and JPEG Still pictures.

Swivel stand

This LCD TV comes with a swivel stand that allows your guests to adjust the TV so that they can watch TV from any position in the room. The stand can be secured to a table or furniture to provide additional security against theft.

USB Cloning



Provides the ability to easily copy all programming and channel programming settings from one TV into other TV sets in less than a minute. The feature ensures uniformity between TV sets and significantly reduces installation time and costs.

Eco-friendly design

Sustainability is integral to the way Philips does business. Philips TVs are designed and produced according to our EcoDesign principles aimed at minimising overall environmental impact, through lower power consumption, removal of hazardous substances, lower weight, more efficient packaging and better recyclability. Philips TVs also have a special housing of flame-retardant material. Independent tests carried out by emergency fire services have shown that whereas TVs can sometimes intensify fires caused by external sources, Philips TVs will not contribute to a fire.

Specifications

Ambilight

- Ambilight Features: Ambilight 2 Channel, Auto adaptive to video content, Efficient low energy lamp, Full operation in stand-by
- Ambilight light system: LED-wide colour
- Dimming Function: Manual and via Light Sensor

Picture/Display

- Aspect ratio: 16:9
- Diagonal screen size (inch): 32 inch
- Diagonal screen size (metric): 80 cm
- Panel resolution: 1366 x 768p
- Brightness: 550 cd/m²
- Picture enhancement: 3D Combfilter, 3/2 - 2/2 motion pull down, Active Control + Light sensor, Perfect Pixel HD Engine, Dynamic contrast enhancement, Jagged Line Suppression, Progressive scan, Pulse Killer Chip, Widescreen Plus, 1080p 50/60 Hz processing, 100 Hz Clear LCD, 1080p 24/25/30 Hz processing, Double frame rate, HD Natural Motion
- Contrast ratio (typical): 1200:1
- Display screen type: LCD WXGA Active Matrix TFT
- Dynamic screen contrast: 8000:1
- Response time (typical): 3 (BEW equiv.) ms
- Viewing angle: 176° (H)/176° (V)
- Screen enhancement: Anti-Reflection coated screen
- Colour processing: 4 trillion colours (14-bit RGB)

Supported Display Resolution

- Computer formats: 640 x 480, 60 Hz, 800 x 600, 60 Hz, 1024 x 768, 60 Hz, 1280 x 1024, 60 Hz, 1360 x 768, 60 Hz
- Video formats: 480i, 60 Hz, 480p, 60 Hz, 576i, 50 Hz, 576p, 50 Hz, 720p, 50, 60 Hz, 1080i, 50, 60 Hz, 1080p, 24, 25, 30 Hz, 1080p, 24, 50, 60 Hz

Tuner/Reception/Transmission

- Aerial Input: 75 ohm coaxial (IEC75)
- Tuner bands: Hyperband, S-Channel, UHF, VHF
- TV system: DVB COFDM 2K/8K
- Digital TV: DVB Terrestrial*
- Video Playback: NTSC, SECAM, PAL

Multimedia Applications

- Multimedia connections: USB
- Playback Formats: MP3, Slideshow files (.alb), JPEG Still pictures

Convenience

- Ease of Installation: Cloning of TV settings via USB, Keyboard lock-out, Security menu access, Auto Programme Naming, Automatic Channel Install (ACI), Automatic Tuning System (ATS), Autostore, PLL Digital Tuning, Plug and Play
- Ease of Use: Auto Volume Leveller (AVL), Delta Volume per preset, Graphical User Interface, On-Screen Display, Programme List, Side Control, 1 channel list analogue/digital
- Comfort: Hotel Guest features, Switch on channel, Volume limitation, Welcome message, Sleep timer
- Screen Format Adjustments: 4:3, 6 Widescreen Modes, Auto Format, Movie expand 14:9, Movie expand 16:9, Super Zoom, Widescreen
- Multimedia: Digital media reader (browser), USB autobreak-in
- Electronic Programme Guide: 8-day Electronic Programme Guide, Now + Next EPG
- Remote control type: RC4450
- Teletext: 1200-page Hypertext
- Other convenience: Kensington lock, Convertible to consumer TV
- Firmware upgradeable: Firmware auto upgrade wizard, Firmware upgradeable via USB
- Teletext enhancements: Habit Watch, Programme information Line
- Teletext languages: Cyrillic, Eastern European, Western European

Sound

- Output power (RMS): 2 x 8 W
- Sound System: Virtual Dolby Digital, BBE
- Sound Enhancement: Digital Signal Processing, Dynamic Bass Enhancement, Graphic Equalizer

Loudspeakers

- Built-in speakers: 4
- Loudspeaker types: Integrated woofers with wOOx, Dome tweeter

Connectivity

- Connectivity Enhancements: Serial Xpress interface, UART 3.5 mm mini-jack
- HDMI features: Cable equalization, Category 1 and 2 cables, Compressed audio, Multi-rate pref. format support, PC format support, Resolutions 720p, 1080i, 1080p
- Front/Side connections: Audio L/R in, CVBS in, Headphones Out, S-video in, USB
- Ext 1 Scart: Audio L/R, CVBS in/out, RGB
- Ext 2 Scart: Audio L/R, CVBS in/out, RGB
- Other connections: Analogue audio Left/Right out, Common Interface, S/PDIF out (coaxial)
- Ext 3: YPbPr, Audio L/R in
- Ext 4: HDMI v1.3
- Ext 5: HDMI v1.3
- Ext 6: HDMI v1.3

Power

- Mains power: AC 220-240 V +/- 10%
- Ambient temperature: 5°C to 35°C
- Power consumption: 132 W
- Standby power consumption: 0.8

Green Specifications

- Safety: Flame-retardant housing

Accessories

- Included accessories: Warranty Leaflet, Power

Specifications

- cord, Tabletop swivel stand, Remote Control
- Optional accessories: IR receiver/blaster (IR link), Set up Remote RC2573GR

Dimensions

- Set Width: 829 mm
- Set Height: 543 mm
- Set Depth: 125 mm
- Product weight: 17.6 kg
- Set width (with stand): 829 mm
- Set height (with stand): 607 mm
- Set depth (with stand): 219 mm
- Product weight (+stand): 19.8 kg
- Box width: 1000 mm
- Box height: 742 mm
- Box depth: 290 mm
- Weight incl. Packaging: 25.1 kg
- Wall-mount compatible: 200 x 100 mm



Issue date 2024-03-24

Version: 2.0.6

EAN: 87 12581 34515 0

© 2024 Koninklijke Philips N.V.
All Rights reserved.

Specifications are subject to change without notice.
Trademarks are the property of Koninklijke Philips N.V.
or their respective owners.

www.philips.com