



Philips
Headphones with mic

8.6mm drivers/closed-back
In-ear

SHE3705BL

Big beats, pumping bass

Compact design with vacuum metalized protection

Ultra small, big bass Philips MyJam Vibes in-ear headphones feature oval tube inserts for comfort and vacuum metalized coating for sleek looks with extra protection.

Always ready to go

- Reinforced cable relief enhances durability and connectivity
- Built-in mic switches from music to phone calls

Revel in quality sound

- Big bass and clear sound through efficient drivers
- A perfect in-ear seal blocks out external noise

Listen for longer

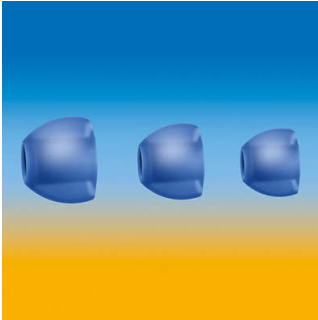
- Oval sound tube insert provides an ergonomic comfort fit
- Shiny, colorful coating looks sleek and also protects
- 3 interchangeable rubber ear caps offer an optimal fit

PHILIPS

Headphones with mic
8.6mm drivers/closed-back In-ear

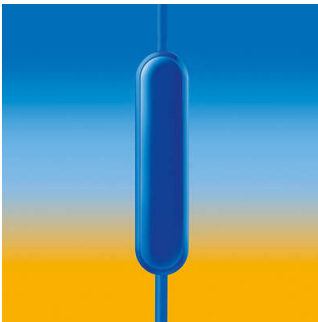
Highlights

3 sizes of ear caps



Ear caps come in a choice of 3 sizes - small, medium and large - for a personalized and perfect fit

Built-in microphone



Built-in microphones let you easily switch from music listening to taking phone calls, so you will always stay connected.

Colorful shiny coating



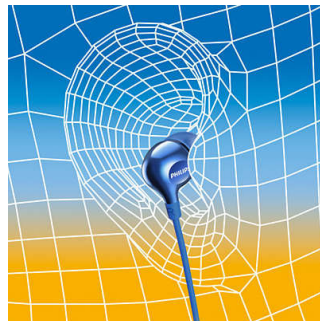
A high quality, glossy and colorful coating creates a sleek look while adding an extra protective surface.

Efficient drivers



Philips Vibes in-ear headphones house efficient drivers inside a compact design. They fit perfectly while pumping out clear sound and booming bass.

Oval sound tube



An oval sound tube insert provides ergonomic comfort to fit the true shape of the ear.

Perfect in-ear fit



Ultra small earphones fit perfectly inside the ear, creating a seal that blocks out external noise.

Reinforced cable relief

To extend the life of your headphones, a soft rubber relief between them and the cable protects the connection from damage through repeated bending.

SHE3705BL/00

Specifications

Sound

- Acoustic system: Closed
- Frequency response: 11–22 000 Hz
- Diaphragm: PET
- Magnet type: Neodymium
- Type: Dynamic
- Voice coil: copper
- Speaker diameter: 8.6 mm
- Sensitivity: 105 dB
- Maximum power input: 20 mW
- Impedance: 16 ohm

Connectivity

- Type of cable: copper
- Cable Connection: two parallel, symmetric
- Finishing of connector: chrome-plated
- Cable length: 1.2 m
- Connector: 3.5 mm

Outer Carton

- Length: 37.5 cm
- Number of consumer packagings: 24
- Width: 17.9 cm
- Gross weight: 1.14 kg
- Height: 13.9 cm
- GTIN: 1 69 25970 70940 5
- Nett weight: 0.312 kg
- Tare weight: 0.828 kg

Inner Carton

- Length: 18.1 cm
- Number of consumer packagings: 3
- Width: 8.1 cm
- Height: 6 cm
- Nett weight: 0.039 kg
- Gross weight: 0.127 kg
- Tare weight: 0.088 kg
- GTIN: 2 69 25970 70940 2

Packaging dimensions

- Height: 17.3 cm
- Packaging type: Blister
- Type of shelf placement: Both
- Width: 5 cm
- Depth: 2.7 cm
- Number of products included: 1
- EAN: 69 25970 70940 8
- Gross weight: 0.027 kg
- Nett weight: 0.013 kg
- Tare weight: 0.014 kg

Accessories

- Eartips: 3 sizes S, M, L

Design

- Color: Blue



Issue date 2024-03-08

Version: 3.0.1

EAN: 69 25970 70940 8

© 2024 Koninklijke Philips N.V.
All Rights reserved.

Specifications are subject to change without notice.
Trademarks are the property of Koninklijke Philips N.V.
or their respective owners.

www.philips.com