

PHILIPS

Wet & Dry Electric
Shaver

Shaver 3000X Series

PowerCut Blades

Shave wet and dry

Anti-Corrosion Shaving System

4D Flex Heads



X3003/02

Comfortable, clean shave

With SkinProtect Technology

Philips Shaver 3000X Series Wet & Dry Electric Shaver gives you a comfortable, clean shave and good value. 27 self-sharpening PowerCut Blades, wet and dry use, and a pop-up trimmer make the shaver easy to use and always reliable.

Easy to use

- Suitable for head shaving

A clean shave

- PowerCut Blades for a consistent, clean shave

Skin Protect technology

- 4D Flex Heads follow your face for a comfortable shave
- Wet and dry shaving at the sink or in the shower
- Anti-Corrosion Shaving System respects the skin

Sustainable

- Made with care for you and the planet

Easy to use and versatile

- Pop-up trimmer for your moustache and sideburns
- One-touch open for easy cleaning
- 40 minutes of cordless shaving from a 1 hour charge

Shaver 3000X Series

Wet & Dry Electric Shaver

X3003/02

Highlights

PowerCut Blades



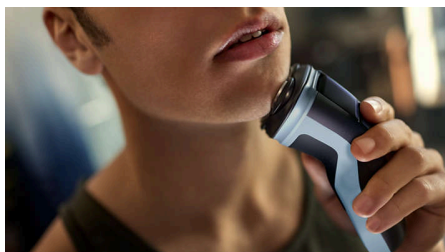
27 self-sharpening blades consistently cut each hair right above skin level for a smooth, even finish every time. Our self-sharpening blades stay like new for 2 years.

Wet and dry shaving



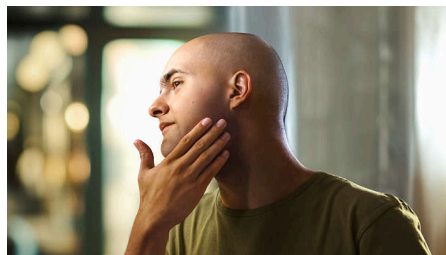
Choose a convenient dry shave, or pair with your favourite foam or gel for a refreshing wet shave, even in the shower.

4D Flex Heads



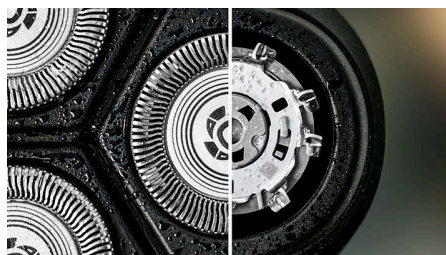
Floating heads flex in four directions to maintain even contact with your skin, protecting it from nicks and cuts.

Suitable for head shaving



The shaver is designed to be a versatile solution that allows you to confidently shave both your face and head

Anti-Corrosion Shaving System



Our shaver blades are made from surgical-grade hypoallergenic steel to resist corrosion, prevent impurities and protect your skin.

Pop-up trimmer



Refine and define your moustache and sideburns to complete your look with the pop-up trimmer.

One-touch open



The shaver head flips open at the touch of a button so you can rinse it clean under running water.

40 minutes of cordless shaving (1h)



In just an hour, the durable NiMH battery is fully charged for about 13 shaves. In a hurry? A 5 minute quick charge gives you enough power for one shave.

Ergonomic grip



Never lose your grip. The ergonomic handle with rubber stays secure and comfortable, even when wet.

Battery indicator



Don't get caught with an empty battery. The battery indicator lets you know if the battery is low, empty or charging.

Shaver 3000X Series

Wet & Dry Electric Shaver

X3003/02

Highlights

USB-A Charging



At Philips, we drive sustainability in all aspects of product creation. Our ambition is to reduce waste and minimise the number of USB adapters we put in the market. Should you need an adapter, a suitable supply unit is available via: www.philips.com/support

Made with care for the planet



The packaging of this shaver is plastic-free and made out of 90% recycle material, while our blade-production facility uses 100% renewable electricity.

Nose trimmer included



Easily reach and remove unwanted nose and ear hair comfortably. Ensure your nostrils are clean before use and carefully insert the trimmer inside your nose no more than 0.5 cm and slowly circulate it. When trimming ear hair, ensure ears are free of wax.

Shaver 3000X Series

Wet & Dry Electric Shaver

X3003/02

Specifications

Accessories

Maintenance: Protective cap
Nose trimmer included
Pop-up trimmer included

Power

Run time: 40 min/13 shaves
Charging time: 1 hour full charge
Battery type: NiMH
Quick charge: Yes, 5 minutes

Design

Handle: Ergonomic grip & handle
Colour: Celestial Blue

Service

2 year warranty
Replacement head: Replace every 2 yrs with SH30

Shaving Performance

Contour following: 4D Flex Heads
Shaving system: PowerCut blade system, 27 self-sharpening blades, 55.000 cuts/minute

Ease of use

Display: Charging indicator
Wet & Dry: Shave wet or dry
Cleaning: One-touch open, Fully washable
Operation: Cordless use only
Waterproof: Waterproof IPX7, Showerproof

Skin Protect technology

Skin Protection: Anti-Corrosion Shaving System

