



Philips Evnia Gaming
Monitor
QD OLED gaming monitor

Evnia 8000

49 (48.9" / 124.3 cm diag.)
5120 x 1440 (Dual QHD)



49M2C8900

Gaming beyond innovation

Elevate your gaming experience with this monitor's incredible contrast-producing QD OLED display, 32:9 Curved SuperWide screen and exclusive Ambiglow feature so you can set the mood of the room for each game.

Features designed for gamers' needs

- Ambiglow intensifies entertainment with a halo of light
- LowBlue mode and Flicker-free easy-on-the eyes viewing
- DTS Sound™ with 30 W output: for enhanced audio

Built for fast action

- AMD FreeSync™ Premium Pro; smooth, low latency HDR gaming
- Ultra-fast 240 Hz refresh rate for virtually lag-free gaming
- Certified NVIDIA® G-SYNC® compatible for smooth, fast gaming
- SmartImage game mode optimised for gamers
- VESA Certified ClearMR: for accurate blur testing

Immersive visuals

- Curved display design for a more immersive experience
- DisplayHDR™ True Black 400 delivers incredible shadow details
- True 10-bit display reproduces smoother gradients on visuals
- QD OLED for superior colours and vibrant visuals

EVNIA

PHILIPS

QD OLED gaming monitor
Evia 8000 49 (48.9" / 124.3 cm diag.), 5120 x 1440 (Dual QHD)

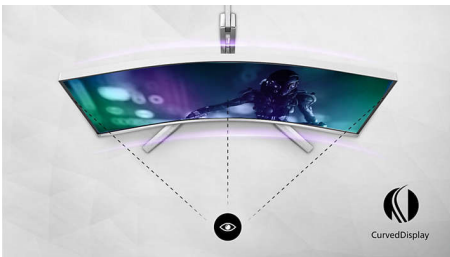
Highlights

QD OLED technology



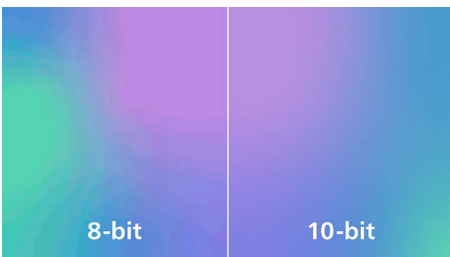
QD-OLED represents a hybrid approach that marries OLED panels and quantum dot technology. By combining what's best of both, QD-OLED guarantees high contrast, deep blacks and unlimited viewing angles, with a higher peak brightness and more vibrant colours.

Curved display design



Desktop monitors offer a personal user experience, which suits a curved design very well. The curved screen provides a pleasant yet subtle immersion effect, which focuses on you at the centre of your desk.

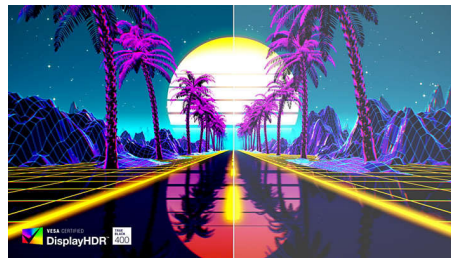
True 10-bit colour depth



With this Philips true 10-bit colour display, you can see colour-critical professional work of

exceptional colour accuracy that meets professional standards. Compared with conventional 8-bit colour displays, this Philips monitor produces a more natural transition between hues for smoother gradients.

DisplayHDR™ True Black 400



This Philips monitor is certified with VESA DisplayHDR™ True Black 400, delivering stunningly accurate shadow details with deeper blacks for a remarkable visual experience compared with conventional monitors of the same peak luminance. This Philips monitor comes with several HDR modes, each optimised for your usage scenarios: HDR Game, HDR Movie, HDR Photo and VESA DisplayHDR-certified level.

Ultra-fast 240 Hz refresh rate



While playing the most intense, engaging and action-oriented games, the ultra-fast 240 Hz refresh rate creates an ultra-smooth, lag-free gaming experience. This Philips display redraws the screen image up to 240 times per second, effectively faster than a standard display. 240 Hz give superior motion and clarity to the visuals, especially for fast-paced games like FPS and racing games. With the Philips 240 Hz

49M2C8900/00

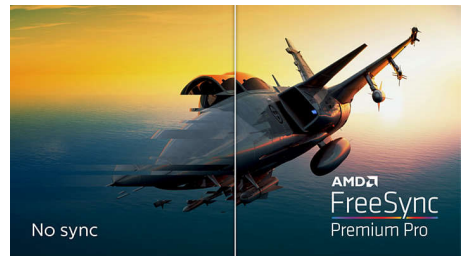
display, action sequences in gameplay look judder-free and ghost-free. You will experience deeper immersion and feel alive in the game.

NVIDIA® G-SYNC® compatible



When playing intense games with high refresh rates, screen tearing may appear without optimal graphics synchronisation. This Philips display is certified as NVIDIA® G-SYNC® compatible, reducing screen tearing and syncing your monitor's refresh rate with your graphic card's output for a smoother gaming experience. Scenes appear instantly, objects look sharper, and gameplay is smooth, giving you a stunning visual experience and a serious competitive edge.

AMD FreeSync™ Premium Pro



Gaming shouldn't be a choice between choppy gameplay or broken frames. AMD FreeSync™ Premium Pro provides the true HDR gaming experience: a combination of smooth gaming at peak performance and exceptional high dynamic range visuals while still maintaining low latency.



Specifications

Connectivity

- Signal Input: HDMI 2.1 x 2, DisplayPort 1.4 x 1, USB-C x 1 (DP Alt mode, Power Delivery)
- Sync Input: Separate Sync
- Audio (In/Out): Audio out
- HDCP: HDCP 1.4 (HDMI/DisplayPort/USB-C), HDCP 2.2 (HDMI/DisplayPort/USB-C), HDCP 2.3 (HDMI/DisplayPort/USB-C)
- USB Hub: USB version 3.2 Gen1 / 5 Gbps, USB-B upstream x 1, USB-A downstream x 4 (with 2 for fast charge B.C 1.2)

Picture/Display

- Panel Size: 48.9 inch / 124.3 cm
- Aspect ratio: 32:9
- Monitor Panel Type: QD OLED
- Pixel pitch: 0.233 x 0.233 mm
- Brightness: SDR: 250 (APL 100%) nit, HDR: 450 (APL 10%) nit, HDR E/P: 1000 (APL 3%) nit
- Display colours: Colour support 1.07 billion colours (10-bit)
- Colour gamut (typical): NTSC 127.4%*, sRGB 153.1%*, Adobe RGB 125.2%*
- Colour gamut (min.): DCI-P3: 99%*
- Contrast ratio (typical): 1,500,000:1
- SmartContrast: Mega Infinity DCR
- Response time (typical): 0.03 ms (Grey to Grey)*
- Viewing angle: 178° (H)/178° (V), @ C/R > 10
- Picture enhancement: SmartImage game
- Maximum resolution: 5120 x 1440 @ 240 Hz
- Effective viewing area: 1196.7 (H) x 339.2 (V) - at a 1800R curvature*
- Scanning Frequency: 30 - 388 kHz (H) / 48 - 240 Hz (V)
- sRGB
- Delta E: < 2 (sRGB)
- Flicker-free
- Pixel Density: 108.77 PPI
- LowBlue Mode
- Display Screen Coating: Anti-reflection, 2H
- Low Input Lag

- EasyRead
- AMD FreeSync™ technology: Premium Pro
- G-SYNC: Compatible 50 Hz ~ 240 Hz*
- HDR: DisplayHDR True Black 400 certified
- Ambiglow: 3 sided
- Pixel format: RGB Q-Stripe*

Power Delivery

- Max power delivery: Up to 90 W (5 V/3 A, 7 V/3 A, 9 V/3 A, 10 V/3 A, 12 V/3 A, 15 V/3 A, 20 V/4.5 A)
- Version: USB PD version 3.0

Convenience

- Built-in Speakers: 7.5 W x 4, DTS
- Plug and Play Compatibility: DDC/CI, Mac OS X, sRGB, Windows 11/10/8.1/8
- User convenience: Power On/Off, Menu/OK, Input/Up, Game Settings/Down, SmartImage game/Back
- OSD Languages: Brazil Portuguese, Czech, Dutch, English, Finnish, French, German, Greek, Hungarian, Italian, Japanese, Korean, Polish, Portuguese, Russian, Spanish, Simplified Chinese, Swedish, Turkish, Traditional Chinese, Ukrainian
- Other convenience: Kensington lock, VESA mount (100 x 100 mm)
- MultiView: PIP/PBP mode, 2 x devices
- KVM
- Low blue light: Low blue light compliance*

Sound

- Output Power: 30 W, 2.2 Channel
- Sound Enhancement: DTS Sound
- Speaker Configuration: 7.5 W x 2 tweeters, 7.5 W x 2 woofers with flow port

Stand

- Height adjustment: 120 mm
- Swivel: +/- 20 degree
- Tilt: -5/15 degree

Power

- Power supply: Internal, 100–240 VAC, 50–60 Hz
- Off mode: 0.3 W (typ.)
- On mode: 163.35 W (typ.)
- Standby mode: 0.5 W (typ.)
- Power LED indicator: Operation - White, Standby mode - White (flashing)
- Energy Label Class: G

Dimensions

- Packaging in mm (W x H x D): 1290 x 300 x 475 mm
- Product without stand (mm): 1195 x 369 x 181 mm
- Product with stand (max height): 1195 x 544 x 359 mm

Weight

- Product with packaging (kg): 19.41 kg
- Product with stand (kg): 13.96 kg
- Product without stand (kg): 10.82 kg

Operating conditions

- Altitude: Operation: +12,000 ft (3658 m), Non-operation: +40,000 ft (12,192 m)
- Temperature range (operation): 0°C to 40 °C
- MTBF: 30,000 hour(s)
- Relative humidity: 20%-80 %
- Temperature range (storage): -20°C to 60 °C

Sustainability

- Environmental and energy: RoHS
- Recyclable packaging material: 100 %
- Specific Substances: Mercury free, PVC/BFR free housing

Compliance and standards

- Regulatory Approvals: CB, CE Mark, FCC Class B, ICES-003, CU-EAC, EAEU RoHS, TUV/ISO9241-307, TUV-BAUART, cETLus

Specifications

Cabinet

- Colour: White
- Finish: Textured

What's in the box?

- Cables: HDMI cable, DisplayPort cable, USB

- upstream cable, USB-C to USB-C cable, Power cable
- Monitor with stand
- User Documentation
- Accessory: Remote control, VESA bracket

Issue date 2024-04-24

© 2024 Koninklijke Philips N.V.
All Rights reserved.

Version: 8.3.2

Specifications are subject to change without notice.
Trademarks are the property of Koninklijke Philips N.V.
or their respective owners.

EAN: 87 12581 80166 3

www.philips.com

- * Radius of the arc of the display curvature in mm
- * Active pixels: 5120 (H) x 1440 (V). Number of total pixels: 5136 (H) x 1456 (V); extra 8 pixels on each side, space reserved for pixel orbiting.
- * Response time value equal to SmartResponse. The measurement pattern is 1 horizontal line.
- * 2020 Advanced Micro Devices, Inc. All rights reserved. AMD, the AMD Arrow logo, AMD FreeSync™ and combinations thereof are trademarks of Advanced Micro Devices, Inc. Other product names used in this publication are for identification purposes only and may be trademarks of their respective companies.
- * Make sure to update NVIDIA® G-SYNC® driver to the latest version, see more information on NVIDIA website: <https://www.nvidia.com/>
- * G-Sync compatible only supports VRR (Variable Refresh Rate) from 50 Hz - 240 Hz.
- * Make sure that your graphic card supports NVIDIA® G-SYNC®
- * DCI-P3 Coverage based on CIE1976
- * NTSC Area based on CIE 1976
- * sRGB Area based on CIE1931
- * Adobe RGB Area based on CIE1976
- * The ratio of display emission light in the range from 415 - 455 nm to the display emission of 400 - 500 nm shall be less than 50%.
- * For best output performance, please always ensure that your graphic card is capable of achieving the maximum resolution and refresh rate of this Philips display.
- * For USB-C power and charging function, your Notebook/device must support USB-C standard Power Delivery specifications. Please check with your Notebook user manual or manufacturer for more details.
- * For Video transmission via USB-C, your Notebook/device must support USB-C DP Alt mode
- * The monitor may look different from feature images.