

PHILIPS

32:9 SuperWide curved
monitor with USB-C

Curved Business Monitor

5000 series

49 (48.8" / 124 cm diag.)

5120 x 1440 (Dual QHD)

49B2U5900CH



Redefining workflow productivity

Welcome to a more efficient workspace. To facilitate everyday workflow, this monitor's large 32:9 SuperWide screen is equipped with a new busy light and tilting webcam feature that helps you flow between tasks with ease.

Superb Picture Quality

- VA display delivers awesome images with wide viewing angles
- DisplayHDR 400 for more lifelike and outstanding visuals

Single cable USB-C connection

- RJ-45 to USB-C gives easy network connection with security
- USB 3.2 high-speed data transfer

Designed for the way you work

- Windows Hello Compatible – Seamless, Secure Access
- SoftBlue Technology: for comfortable viewing
- Secure sign-in with pop-up webcam
- Eyesafe-certified blue light protection and colour accuracy
- 32:9 SuperWide screen designed to replace multiscreen setups
- Curved display design for a more immersive experience
- Adjustable webcam: for comfortable video conferencing.
- Busylight: for setting your work status

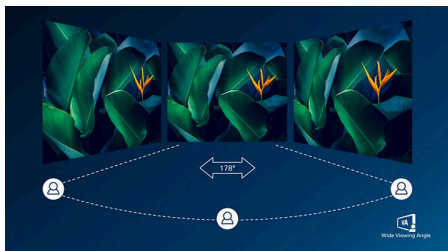
Curved Business Monitor

32:9 SuperWide curved monitor with USB-C

49B2U5900CH/01

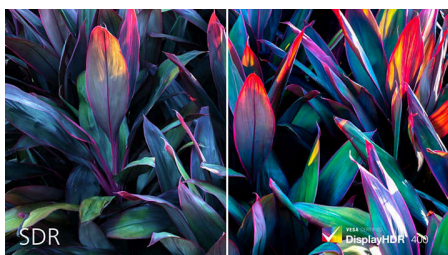
Highlights

VA display



The Philips VA LED display uses an advanced multi-domain vertical alignment technology that gives you super-high static contrast ratios for extra-vivid and bright images. While standard office applications are handled with ease, it is especially suitable for photos, web browsing, films, gaming and demanding graphical applications. Its optimised pixel management technology gives you a 178/178 degree extra-wide viewing angle, resulting in crisp images.

DisplayHDR 400



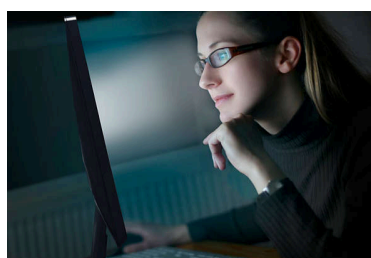
VESA-certified DisplayHDR 400 delivers a significant step up from normal SDR displays. Unlike other 'HDR-compatible' screens, true DisplayHDR 400 produces astonishing brightness, contrast and colours. With global dimming and minimum 400 nits of brightness, images come to life with notable highlights while featuring deeper, more nuanced blacks. It renders a fuller palette of rich new colours, delivering a visual experience that engages your senses.

USB-C Docking with RJ45



Simplify all peripherals from monitor to PC using one-cable docking USB Type-C connector, including networking, high-resolution video output from PC to monitor, and surfing on the Internet without an additional network cable, even without a LAN port on your notebook. RJ45 connection through USB-C offers a fast and secure connection when needed. Getting the fastest data speeds allows you to transfer data from a HDD to your PC faster than ever. Additionally, USB-C with power delivery can even enable you to power and charge your notebook from the monitor, eliminating the need for extra power cables.

SoftBlue Technology with Low Blue Light Panel



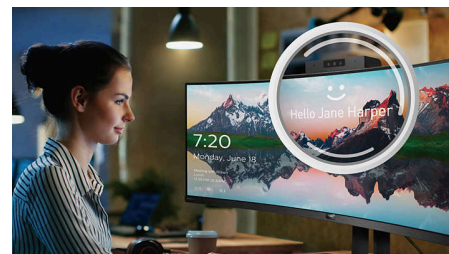
SoftBlue technology offers increased visual comfort and protection against adverse health effects caused by prolonged exposure to blue light. With the low blue-light panel, the ratio of display emission light in the range of 415-455 nm to 400-500 nm is reduced to less than 50%. As a result, the SoftBlue technology provides optimal visual comfort, minimises eye strain and supports sustained focus. Not to mention, SoftBlue LED technology is tested and TÜV Rheinland Low Blue Light (Hardware Solution) certified for its effectiveness in reducing blue light emissions.

SmartKVM



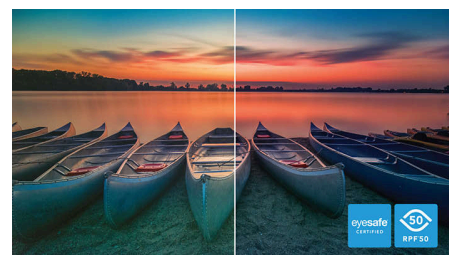
Unlike traditional built-in KVM monitor buttons, the smart KVM allows for switching between sources with the click of a button on your keyboard. When all devices are properly connected, users can easily switch between sources by clicking the "Ctrl" key three times.

Pop-up webcam



Philips' innovative and secure webcam pops up when you need it and securely tucks back into the monitor when you are not using it. The webcam is also equipped with advanced sensors for Windows Hello facial recognition, which conveniently logs you into your Windows devices in less than 2 seconds, 3 times faster than a password.

TÜV Rheinland Eyesafe



Philips display meets the TÜV Rheinland Eyesafe® standard to truly protect you from long exposure to blue light. The always-on blue light filter not only helps reduce digital eye strain, but also guarantees colour integrity.



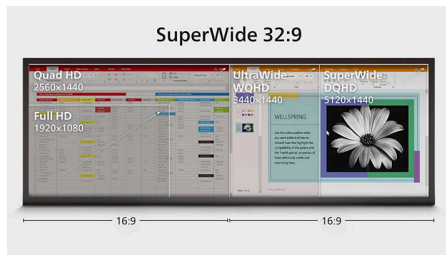
Curved Business Monitor

32:9 SuperWide curved monitor with USB-C

49B2U5900CH/01

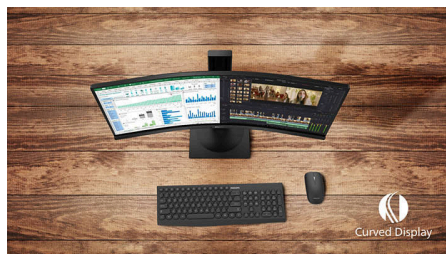
Highlights

32:9 SuperWide



32:9 SuperWide 49" screen with 5120 x 1440 resolution is designed to replace multiscreen setups for a massive wide view. It's like having two 27" 16:9 Quad HD displays side by side. SuperWide monitors offer the screen area of dual monitors without the complicated setup.

Curved display design



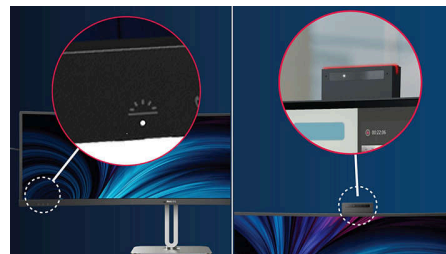
Desktop monitors offer a personal user experience, which suits a curved design very well. The curved screen provides a pleasant yet subtle immersion effect, which focuses on you at the centre of your desk.

Adjustable webcam



Level up the comfort of video conferencing with this feature. By adjusting the webcam back by 30 degrees, users can now comfortably call and attend meetings from any position that best suits them.

Busylight



This feature allows for privacy and optimal collaboration when working in a busy office setting. To transmit to others that they are busy, users can simply press the Busylight hotkey located on the bottom left menu of the monitor bezel, and the light located on the webcam will turn red. In addition to this, the Busylight feature can also sync with users' Microsoft Teams status.

Windows Hello Compatible



Log in faster and more securely with Windows Hello. The webcam on this Philips monitor is compatible with Windows Hello, offering quick facial recognition and effortless access - every time you power on.

Earphone Hook



Earphone storage is unmatched with this feature. Carefully pull down the hook located on the side of the monitor: This feature makes for a tidy desktop and provides a handy cable management solution for your workspace.



Built-in Speaker

Specifications

Picture/Display

Panel Size: 48.8 inch/124 cm

Aspect ratio: 32:9

LCD panel type: VA LCD

Backlight type: W-LED system

Pixel pitch: 0.2328 x 0.2328 mm

Brightness: 450 cd/m²

Display colours: 1.07 B (8-bit + FRC)

Colour gamut (typical): NTSC 97%*, sRGB 119%*

Contrast ratio (typical): 3000:1

SmartContrast: 80,000,000:1

Response time (typical): 4 ms (Grey to Grey)*

Viewing angle: 178° (H)/178° (V), @ C/R > 10

Picture enhancement: SmartImage

Maximum resolution: 5120 x 1440 @ 75 Hz

Effective viewing area: 1191.936 (H) x 335.232

(V) - at a 1800R curvature*

Scanning Frequency: HDMI: 30 - 140 kHz (H)/48-75 Hz (V); DP: 30 - 114 kHz (H)/48-75 Hz (V); USB-C: 30 - 114 kHz (H)/30 - 75 Hz (V)

sRGB

Delta E: < 2

Flicker-free

Pixel Density: 109 PPI

LowBlue Mode

Display Screen Coating: Anti-Glare, 3H, Haze 25%

SmartUniformity: 93 ~ 105%

EasyRead

Adaptive sync

HDR: DisplayHDR 400 certified

Connectivity

Signal Input: HDMI 2.0 x 2, DisplayPort 1.4 x 1, USB-C x 1 (upstream, DP Alt mode, Data, PD up to 100 W)

Sync Input: Separate Sync

Audio (In/Out): Audio out/Microphone in combo jack

RJ45: Ethernet LAN up to 1 G*, Wake on LAN

HDCP: HDCP 1.4 (HDMI/DisplayPort/USB-C), HDCP 2.2 (HDMI/DisplayPort/USB-C)

HBR3: HBR3 (USB-C/DisplayPort)

USB Hub: USB 3.2 Gen 1/5 Gbps, USB-B upstream x 1, USB-A downstream x 2 (with 1 for fast-charge B.C 1.2), USB-C downstream x 1 (Data, PD 15 W)

Power Delivery

Max power delivery: Up to 100 W* (5 V/3 A, 7 V/3 A, 9 V/3 A, 10 V/3 A, 12 V/3 A, 15 V/3 A, 20 V/4.8 A)

Version: USB PD version 3.0

Convenience

Built-in Speakers: 3 W x 2

Plug and Play Compatibility: DDC/CI, Mac OS, sRGB, Windows 11/10/8.1/8

User convenience: Mic, SmartImage, Input, User, Menu, Power On/Off

OSD Languages: Brazil Portuguese, Czech, Dutch, English, French, Finnish, German, Greek, Hungarian, Italian, Japanese, Korean, Portuguese, Polish, Russian, Simplified Chinese,

Spanish, Swedish, Traditional Chinese, Turkish, Ukrainian

Other convenience: Kensington lock, Earphone hook, VESA mount (100 x 100 mm)

Control software: SmartControl

MultiView: PIP/PBP mode, 2 x devices

Built-in webcam: Pop-up 5.0 megapixel camera with a microphone and LED indicator (for Windows Hello)

Busylight

KVM: Yes (USB-C/USB-B)

SmartKVM

Stand

Height adjustment: 150 mm

Swivel: -/+30 degree

Tilt: -5/15 degree

Power

ECO mode: 39 W (typ.)

Power supply: Built-in, 100–240 VAC, 50–60 Hz

Off mode: 0.3 W (typ.)

On mode: 46.1 W (typ.) (Energy Star test method)

Standby mode: 0.3 W (typ.)

Power LED indicator: Operation - White, Standby mode - White (flashing)

Energy Label Class: F

Specifications

Dimensions

Packaging in mm (W x H x D):

1290 x 300 x 475 mm

Product without stand (mm):

1193 x 373 x 164 mm

Product with stand (max height):

1193 x 586 x 268 mm

Weight

Product with packaging (kg): 19.38 kg kg

Product with stand (kg): 15.21 kg kg

Product without stand (kg): 11.58 kg kg

Operating conditions

Altitude: Operation: +12,000 ft (3658 m), Non-operation: +40,000 ft (12,192 m)

Temperature range (operation): 0°C to 40 °C

Relative humidity: 20%-80 %

Temperature range (storage): -20°C to 60 °C

MTBF (demonstrated): 70,000 hrs (excluded backlight)

Sustainability

Environmental and energy: PowerSensor, LightSensor, Energy Star 8.0, EPEAT*, RoHS, TCO Certified Edge

Post-consumer recycled plastic: 85%

Recyclable packaging material: 100 %

Specific Substances: Mercury free, PVC/BFR free housing

Compliance and standards

Regulatory Approvals: CB, CE Mark, FCC Class B, ICES-003, CU-EAC, EAEU RoHS, TUV Ergo, TUV/GS, eyesafe® CERTIFIED 2.0, cETLus, TÜV Rheinland Low Blue Light (Hardware Solution)

Warranty: 5 years

Cabinet

Finish: Texture

Foot: Silver

Front bezel: Charcoal

Rear cover: Charcoal

What's in the box?

Cables: HDMI cable, DisplayPort cable, USB-C to C/A Y cable, Power cable

Monitor with stand

User Documentation



- * Radius of the arc of the display curvature in mm
- * Response time value equal to SmartResponse
- * NTSC Area based on CIE1976
- * sRGB Area based on CIE1931
- * For Video transmission via USB-C, your Notebook/device must support USB-C DP Alt mode
- * The USB-C power delivery of this display is up to 100 W (96 W in typical). The maximum power delivery will depend on your device.
- * For USB-C power and charging function, your Notebook/device must support USB-C standard Power Delivery specifications. Please check with your Notebook user manual or manufacturer for more details.
- * Activities such as screen sharing and online streaming over the Internet can impact your network performance. Your hardware and network bandwidth will determine the overall audio and video quality.
- * If your Ethernet connection seems slow, please enter the OSD menu and select USB 3.0 or a higher version that can support the LAN speed up to 1G.
- * EPEAT rating is valid only where Philips registers the product. Please visit <https://www.epeat.net/> for registration status in your country.
- * The 5 year warranty is a voluntary manufacturer's limited warranty. It applies only in the countries listed on this page <https://www.philips.co.uk/c-e/so/monitors/tco-certified-edge>. For consumers, it is provided in addition to, and without affecting, their legal rights under applicable national laws. For non-consumer (business/professional) end users, only the manufacturer's limited warranty terms apply.
- * When calculating energy costs saving from PowerSensor, both USB and Power delivery are excluded.
- * The monitor may look different from feature images.