

PHILIPS

32:9 SuperWide curved
monitor with USB-C

Curved Business
Monitor

6000 series

49 (48.8" / 124 cm diag.)

5120 x 1440 (Dual QHD)

49B2U6900CH



Redefining workflow productivity

with a pop-up webcam

This monitor is designed with everything you need for a collaborative remote workspace. Its webcam has new features like auto-framing, a busy light and an adjustable webcam for an unmatched video-conferencing experience.

Superb Picture Quality

- DisplayHDR 400 for more lifelike and outstanding visuals

Single cable USB-C connection

- RJ-45 to USB-C gives easy network connection with security

Designed for the way you work

- Eyesafe-certified blue light protection and colour accuracy
- 32:9 SuperWide screen designed to replace multiscreen setups
- Collaboration-ready webcam with noise-cancelling mic.
- Busylight: for setting your work status
- Earphone hook: for customisable storage
- SmartKVM: for easily switching between sources.
- Webcam Autoframing: for dynamic video calls
- Adjustable Webcam: for video conferencing in comfort.
- SoftBlue Technology: for comfortable viewing

Curved Business Monitor

32:9 SuperWide curved monitor with USB-C

49B2U6900CH/01

Highlights

DisplayHDR 400



VESA-certified DisplayHDR 400 delivers a significant step up from normal SDR displays. Unlike other 'HDR-compatible' screens, true DisplayHDR 400 produces astonishing brightness, contrast and colours. With global dimming and minimum 400 nits of brightness, images come to life with notable highlights while featuring deeper, more nuanced blacks. It renders a fuller palette of rich new colours, delivering a visual experience that engages your senses.

Webcam Autoframing



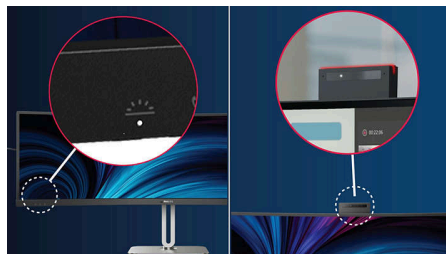
This feature is perfect for multi-person video conferencing. When one or more people join the webcam view, the frame will automatically adjust and zoom to fit all team members. Likewise, when participants leave the webcam view, the frame will adjust accordingly, thereby making it ideal for long meetings as well as team calls.

Adjustable webcam



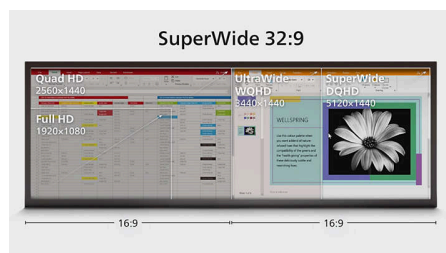
Level up the comfort of video conferencing with this feature. By adjusting the webcam back and forth by 30 degrees, users can now comfortably call and attend meetings from any position that best suits them.

Busylight



This feature allows for privacy and optimal collaboration when working in a busy office setting. To transmit to others that they are busy, users can simply press the Busylight hotkey located on the bottom left menu of the monitor bezel, and the light located on the webcam will turn red. In addition to this, the Busylight feature can also sync with users' Microsoft Teams status.

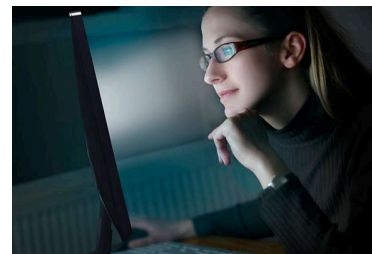
32:9 SuperWide



32:9 SuperWide 49" screen with 5120 x 1440 resolution is designed to replace multiscreen setups for a massive wide view. It's like having

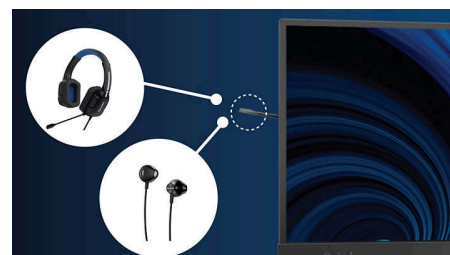
two 27" 16:9 Quad HD displays side by side. SuperWide monitors offer the screen area of dual monitors without the complicated setup.

SoftBlue Technology



SoftBlue LED technology, combined with the monitor's low blue light panel, is an effective solution for reducing the adverse health effects caused by high exposure to blue light. In this monitor's panel, the ratio of light is reduced by nearly 50 percent, while the SoftBlue LED technology works simultaneously by reducing harmful blue light rays emitted from the screen. Furthermore, the SoftBlue LED technology is tested and certified by TUV Rheinland Eyesafe® for its effectiveness in reducing blue light emissions.

Earphone Hook



Earphone storage is unmatched with this feature. Carefully pull down the hook located on the side of the monitor: This feature makes for a tidy desktop and provides a handy cable management solution for your workspace.



Curved Business Monitor

32:9 SuperWide curved monitor with USB-C

49B2U6900CH/01

Highlights

TUV Rheinland Eyesafe



Philips display meets the TUV Rheinland Eyesafe® standard to truly protect you from long exposure to blue light. The always-on blue light filter not only helps reduce digital eye strain, but also guarantees colour integrity.

Webcam and noise-cancelling mic



This Philips monitor comes with a built-in 5 MP webcam, noise-cancelling microphone and speakers, making it perfect for working from home and collaborating remotely. It is equipped with advanced sensors that work seamlessly with Windows Hello facial recognition, allowing you to log into your Windows devices in less than 2 seconds. For added privacy, a physical camera switch lets you disable the webcam when not in use. The noise-cancelling microphone and dual 5 watt integrated speakers ensure clear communication.

USB-C Docking with RJ45



Simplify all peripherals from monitor to PC using one-cable docking USB Type-C connector, including networking, high-resolution video output from PC to monitor, and surfing on the Internet without an additional network cable, even without a LAN port on your notebook. RJ45 connection through USB-C offers a fast and secure connection when needed. Getting the fastest data speeds allows you to transfer data from a HDD to your PC faster than ever. Additionally, USB-C with power delivery can even enable you to power and charge your notebook from the monitor, eliminating the need for extra power cables.

Specifications

Picture/Display

Panel Size: 48.8"/124 cm
Aspect ratio: 32:9
LCD panel type: VA LCD
Backlight type: W-LED system
Pixel pitch: 0.2328 x 0.2328 mm
Brightness: 450 cd/m²
Display colours: 1.07 B (8-bit + FRC)
Colour gamut (typical): NTSC 97%*, sRGB 119%*
Contrast ratio (typical): 3000:1
SmartContrast: 80,000,000:1
Response time (typical): 4 ms (Grey to Grey)*
Viewing angle: 178° (H)/178° (V), @ C/R > 10
Picture enhancement: SmartImage
Maximum resolution: 5120 x 1440 @ 75 Hz
Effective viewing area: 1191.936 (H) x 335.232 (V) mm
Scanning Frequency: HDMI: 30–140 KHz (H)/48–75 Hz (V); DP: 30–114 KHz (H)/48–75 Hz (V); USB-C: 30–75 Hz
sRGB
Delta E: < 2
Flicker-free
Pixel Density: 109 PPI
LowBlue Mode
Display Screen Coating: Anti-Glare, 3H, Haze 25%
SmartUniformity: 93 ~ 105%
Adaptive sync
HDR: DisplayHDR 400 certified

Connectivity

Signal Input: HDMI 2.0 x 2, DisplayPort 1.4 x 1, USB-C x 2 (upstream, DP Alt mode, Data, PD up to 100 W)

Sync Input: Separate Sync

Audio (In/Out): Audio out/Microphone in combo jack

RJ45: Ethernet LAN up to 2.5G*, Wake on LAN

HDCP: HDCP 1.4 (HDMI/DisplayPort/USB-C),

HDCP 2.2 (HDMI/DisplayPort/USB-C)

HBR3: HBR3 (USB-C/DisplayPort)

USB Hub: USB3.2, Gen2, 10G, upstream: USB-C1 x 1, USB-C2 x 1, downstream: USB-A x 4 (with x 1 fast-charge B.C 1.2), USB-C3 x 1 (15 W)

Power Delivery

Max power delivery: Up to 100 W* (5 V/3 A, 7 V/3 A, 9 V/3 A, 10 V/3 A, 12 V/3 A, 15 V/3 A, 20 V/4.8 A)

Version: USB PD version 3.0

Convenience

Built-in Speakers: 5 W x 2

Plug and Play Compatibility: DDC/CI, Mac OS X, sRGB, Windows 11/10

User convenience: Mic, SmartImage, Input, User, Menu, Power On/Off

OSD Languages: Brazil Portuguese, Czech, Dutch, English, French, Finnish, German, Greek, Hungarian, Italian, Japanese, Korean, Portuguese, Polish, Russian, Simplified Chinese, Spanish, Swedish, Traditional Chinese, Turkish, Ukrainian

Other convenience: Kensington lock, Earphone hook, VESA mount (100 x 100 mm)

Control software: SmartControl

MultiView: PIP/PBP mode, 2 x devices

Built-in webcam: 5.0 megapixel camera with microphone and LED indicator

Webcam with auto-framing: Yes*

Webcam tilt function: Yes, -/+30 degree

Busylight

KVM: Yes (USB-C1/USB-C2)

Noise cancellation

Stand

Height adjustment: 150 mm

Swivel: -/+30 degree

Tilt: -5/15 degree

Power

ECO mode: 37.5 W (typ.)

Power supply: Built-in, 100–240 VAC, 50–60 Hz

Off mode: Zero watts with AC switch

On mode: 48.1 W (typ.) (Energy Star test method)

Standby mode: 0.3 W (typ.)

Power LED indicator: Operation - White, Standby mode - White (flashing)

Energy Label Class: F

Dimensions

Packaging in mm (W x H x D):

1290 x 300 x 475 mm

Product without stand (mm): 1193 x 373 x 164 mm

Product with stand (max height):

1193 x 583 x 268 mm

Specifications

Weight

Product with packaging (kg): 19.38 kg

Product with stand (kg): 15.21 kg

Product without stand (kg): 11.58 kg

Operating conditions

Altitude: Operation: +12,000 ft (3658 m), Non-operation: +40,000 ft (12,192 m)

Temperature range (operation): 0°C to 40 °C

Relative humidity: 20%-80 %

Temperature range (storage): -20°C to 60 °C

MTBF (demonstrated): 70,000 hrs (excluded backlight)

Sustainability

Environmental and energy: PowerSensor, LightSensor, Energy Star 8.0, EPEAT*, RoHS, TCO Certified Edge

Post-consumer recycled plastic: 85%+OBP 5%

Recyclable packaging material: 100 %

Specific Substances: Mercury free, PVC/BFR free housing

Compliance and standards

Regulatory Approvals: CB, CE Mark, FCC Class B, ICES-003, CU-EAC, EAEU RoHS, TUV Ergo, TUV/GS, eyesafe[®] CERTIFIED 2.0, cETLus, EAC, MEPS, PSE, TCO Certified, TÜV Rheinland Low Blue Light (Hardware Solution)

Cabinet

Finish: Texture

Foot: Silver

Front bezel: Charcoal

Rear cover: Charcoal

What's in the box?

Cables: HDMI cable, DisplayPort cable, USB-C to C cable, Power cable

Monitor with stand

User Documentation



- * Radius of the arc of the display curvature in mm
- * Response time value equal to SmartResponse
- * NTSC Area based on CIE 1976
- * sRGB Area based on CIE1931
- * For Video transmission via USB-C, your Notebook/device must support USB-C DP Alt mode
- * Activities such as screen sharing and online streaming over the Internet can impact your network performance. Your hardware and network bandwidth will determine the overall audio and video quality.
- * For USB-C power and charging function, your Notebook/device must support USB-C standard Power Delivery specifications. Please check with your Notebook user manual or manufacturer for more details.
- * The USB-C power delivery of this display is up to 100 W (96 W in typical). The maximum power delivery will depend on your device.
- * When calculating energy costs saving from PowerSensor, both USB and Power delivery are excluded.
- * EPEAT rating is valid only where Philips registers the product. Please visit <https://www.epeat.net/> for registration status in your country.
- * The monitor may look different from feature images.
- * When Webcam Autoframing is on, the pixel quality of the webcam is 2M. When Webcam Autoframing is off, the pixel quality of the webcam is 5M.
- * If your Ethernet connection seems slow, please enter the OSD menu and select USB 3.0 or a higher version which can support the LAN speed to 2.5G.