

PHILIPS

EVNIA

Quad HD gaming
monitor

Gaming Monitor

Evnia 5000

32 (31.5"/80 cm diag.)

2560 x 1440 (QHD)

32M2C5500W



Your gaming experience to the utmost

Experience a 240 Hz refresh rate and 0.5 Smart MBR. Not to mention, it is designed to bring you high-contrast, HDR 400 quality visuals and clear Quad HD-quality imagery for a gaming experience that is sure to tick all the boxes.

Built for fast action

- 0.5 ms ultra-fast speed for crisp images and smooth gameplay

Features designed for gamers' needs

- LowBlue mode and Flicker-free easy-on-the eyes viewing
- Tilt, swivel and height-adjust for an ideal viewing position
- EasySelect menu toggle key for quick on-screen menu access
- SmartImage game mode optimised for gamers
- Smart Crosshair: for better aim and more fun

Built for fast action

- AMD FreeSync™ Premium Pro; smooth, low latency HDR gaming
- Low input lag reduces time delay between devices to monitor
- Ultra-fast 240 Hz refresh rate for virtually lag-free gaming

Immersive visuals

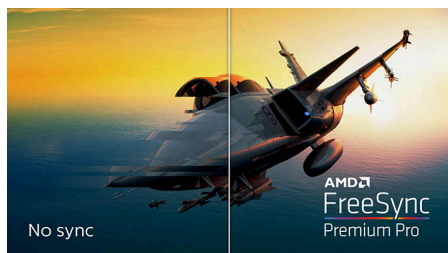
- VA display delivers awesome images with wide viewing angles
- Crystal clear images with Quad HD 2560 x 1440 pixels

Gaming Monitor

Quad HD gaming monitor

Highlights

AMD FreeSync™ Premium Pro



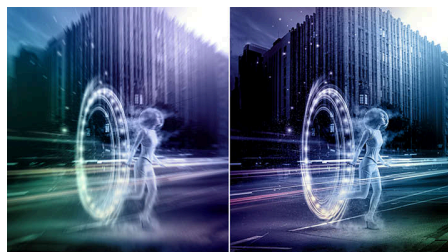
Gaming shouldn't be a choice between choppy gameplay or broken frames. AMD FreeSync™ Premium Pro provides the true HDR gaming experience: a combination of smooth gaming at peak performance and exceptional high dynamic range visuals while still maintaining low latency.

Ultra-fast 240 Hz refresh rate



While playing the most intense, engaging and action-oriented games, the ultra-fast 240 Hz refresh rate creates an ultra-smooth, lag-free gaming experience. This Philips display redraws the screen image up to 240 times per second, effectively faster than a standard display. 240 Hz give superior motion and clarity to the visuals, especially for fast-paced games like FPS and racing games. With the Philips 240 Hz display, action sequences in gameplay look judder-free and ghost-free. You will experience deeper immersion and feel alive in the game.

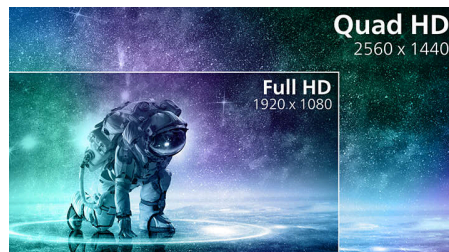
0.5 ms Smart MBR fast response



The Philips Evnia with 0.5 ms Smart MBR effectively eliminates smearing and motion blur, and delivers sharper and more precise visuals to

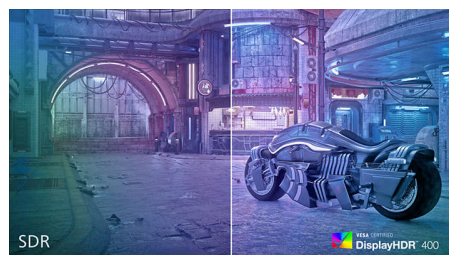
enhance your gaming experience. Fast-moving action and dramatic transitions will be rendered smoothly. It's the best choice for playing thrilling and twitch-sensitive games.

CrystalClear images



These Philips screens deliver CrystalClear, Quad HD 2560 x 1440 or 2560 x 1080 pixel images. Utilising high performance panels with a high-density pixel count enabled by high bandwidth sources, these new displays will make your images and graphics come alive. Whether you are a demanding professional requiring extremely detailed information for CAD-CAM solutions using 3D graphic applications, or a financial wizard working on huge spreadsheets, Philips displays will give you CrystalClear images.

DisplayHDR 400



VESA-certified DisplayHDR 400 delivers a significant step up from normal SDR displays. Unlike other 'HDR-compatible' screens, true DisplayHDR 400 produces astonishing brightness, contrast and colours. With global dimming and minimum 400 nits of brightness, images come to life with notable highlights while featuring deeper, more nuanced blacks. It renders a fuller palette of rich new colours, delivering a visual experience that engages your senses.

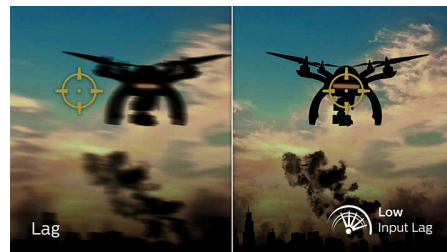
32M2C5500W/00

Curved display design



Desktop monitors offer a personal user experience, which suits a curved design very well. The curved screen provides a pleasant yet subtle immersion effect, which focuses on you at the centre of your desk.

Low input lag



Input lag is the amount of time that elapses between performing an action with connected devices and seeing the result on screen. Low input lag reduces the time delay between entering a command from your devices to monitor, greatly improving play on twitch-sensitive video games, particularly important for playing fast-paced, competitive games.

Compact Ergo Base



The Compact Ergo Base is a people-friendly Philips monitor base that tilts, swivels and height-adjusts so each user can position the monitor for maximum viewing comfort and efficiency.

AMD
FreeSync
Premium Pro

Quad HD

VESA CERTIFIED
DisplayHDR 400

Wide Viewing
Angle

Compact Ergo
Base

EasySelect

Flicker-free

VESA CERTIFIED
DisplayHDR 400

Gaming Monitor

Quad HD gaming monitor

32M2C5500W/00

Highlights

LowBlue mode and Flicker-free



Our LowBlue Mode and Flicker-free technology have been developed to reduce eye strain and fatigue often caused by long hours in front of a monitor.

SmartImage Game mode



The new Philips gaming display has quick-access OSD fine-tuned for gamers, offering you multiple options. "FPS" mode (First person shooting)

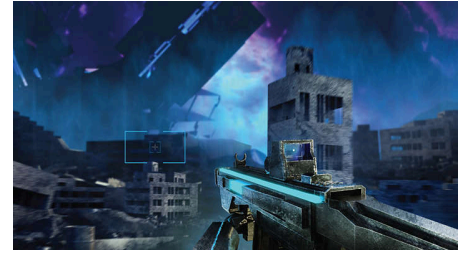
improves dark themes in games, allowing you to see hidden objects in dark areas. "Racing" mode adapts the display with the fastest response time and high colour, along with image adjustments. "RTS" mode (Real-time strategy) has a special SmartFrame mode that enables highlighting of specific area and allows for size and image adjustments. Gamer 1 and Gamer 2 enable you to save personal customised settings based on different games, ensuring best performance.

EasySelect Menu Toggle Key



The discreetly placed EasySelect Menu Toggle Key allows you to make quick and easy adjustments to monitor settings in the On-Screen Display menu.

Smart Crosshair



Colour of Crosshair is set by default. When Smart Crosshair is on, the colour will change as a complementary colour to the background colour. Smart Crosshair enhances the aiming accuracy so you can spot the enemies more easily.

AMD
FreeSync
Premium Pro



VESA CERTIFIED
DisplayHDR 400



Specifications

Picture/Display

Panel Size: 31.5 inch/80 cm
Aspect ratio: 16:9
LCD panel type: VA LCD
Backlight type: W-LED system
Pixel pitch: 0.2724 x 0.2724 mm
Brightness: 500 cd/m²
Display colours: 16.7 M (8 bit)
Colour gamut (typical): NTSC 100%*, sRGB 122%*
Colour gamut (min.): DCI-P3 92%*
Contrast ratio (typical): 4000:1
SmartContrast: Mega Infinity DCR
Response time (typical): 1 ms (Grey to Grey)*
Viewing angle: 178° (H)/178° (V), @ C/R > 10
Picture enhancement: SmartImage game
Maximum resolution: HDMI: 2560 x 1440 @ 144 Hz, DP: 2560 x 1440 @ 240 Hz*
Effective viewing area: 697.344 (H) x 392.256 (V) – at a 1000 R curvature*
Scanning Frequency: HDMI: 30 - 230 kHz (H) / 48 - 144 Hz (V), DP: 30 - 255 kHz (H) / 48 - 240 Hz* (V)
sRGB
Delta E: < 2 (sRGB)
Flicker-free
Pixel Density: 93.24 PPI
LowBlue Mode
Display Screen Coating: Anti-Glare, 3H, Haze 25%
SmartUniformity: 93 ~ 105%
Low Input Lag
EasyRead
AMD FreeSync™ technology: Premium Pro
HDR: DisplayHDR 400 certified
Smart MBR: 0.5 ms*

Connectivity

Signal Input: HDMI 2.0 x 2, DisplayPort 1.4 x 2
Sync Input: Separate Sync
Audio (In/Out): Audio out
HDCP: HDCP 1.4 (HDMI/DP), HDCP 2.2 (HDMI/DP)
USB Hub: USB 3.2, USB-B upstream x 1, USB-A downstream x 4 (with 2 for fast-charge B.C 1.2)

Convenience

Plug and Play Compatibility: DDC/CI, Mac OS X, sRGB, Windows 11/10/8.1/8/7
User convenience: Power On/Off, Menu/OK, Input/Up, Game Settings/Down, SmartImage game/Back

OSD Languages: Brazil Portuguese, Czech, Dutch, English, Finnish, French, German, Greek, Hungarian, Italian, Japanese, Korean, Polish, Portuguese, Russian, Spanish, Simplified Chinese, Swedish, Turkish, Traditional Chinese, Ukrainian
Other convenience: Kensington lock, VESA mount (100 x 100 mm)
MultiView: 2 x devices, PIP/PBP mode

Stand

Height adjustment: 130 mm
Swivel: -/+ 30 degree degree
Tilt: -5/20 degree

Power

Power supply: Internal, 100–240 VAC, 50–60 Hz
Off mode: 0.3 W (typ.)
On mode: 39.36 W (typ.)
Standby mode: 0.5 W (typ.)
Power LED indicator: Operation - White, Standby mode - White (flashing)
Energy Label Class: F

Dimensions

Packaging in mm (W x H x D):
900 x 527 x 226 mm
Product without stand (mm):
700 x 426 x 131 mm
Product with stand (max height):
700 x 601 x 320 mm

Weight

Product with packaging (kg): 11.14 kg
Product with stand (kg): 8.35 kg
Product without stand (kg): 6.5 kg

Operating conditions

Altitude: Operation: +12,000 ft (3658 m), Non-operation: +40,000 ft (12,192 m)
Temperature range (operation): 0°C to 40 °C
MTBF: 50 000 (Excluded backlight) hour(s)
Relative humidity: 20%-80 %
Temperature range (storage): -20°C to 60 °C

Sustainability

Environmental and energy: RoHS
Recyclable packaging material: 100 %
Specific Substances: Mercury free, PVC/BFR free housing

Compliance and standards

Regulatory Approvals: CB, CE Mark, FCC Class B, ICES-003, CCC, CECP, CEL

Cabinet

Colour: Dark Slate
Finish: Textured

What's in the box?

Cables: HDMI cable, DisplayPort cable, USB upstream cable, Power cable
Monitor with stand
User Documentation



* Radius of the arc of the display curvature in mm
* The maximum resolution works for DP input only.
* For best output performance, please always ensure that your graphic card is capable of achieving the maximum resolution and refresh rate of this Philips display.
* Response time value equal to SmartResponse
* Smart MBR adjusts brightness for blur reduction, so you cannot adjust brightness while Smart MBR is turned on. To reduce motion blur, the LED backlight will strobe synchronously with each screen refresh, which may cause a noticeable change in brightness.
* Smart MBR is a gaming-optimised mode. Turning on Smart MBR may cause noticeable screen flickering. We recommended turning it off when you are not using the gaming function.
* NTSC Area based on CIE 1976
* sRGB Area based on CIE1931
* DCI-P3 Coverage based on CIE1976
* The monitor may look different from feature images.
* 2020 Advanced Micro Devices, Inc. All rights reserved. AMD, the AMD Arrow logo, AMD FreeSync™ and combinations thereof are trademarks of Advanced Micro Devices, Inc. Other product names used in this publication are for identification purposes only and may be trademarks of their respective companies.
* Radius of the arc of the display curvature in mm