



Philips Evnia Gaming
Monitor
QD OLED gaming monitor

Evnia 8000

49 (48.9" / 124.3 cm diag.)
5120 x 1440 (Dual QHD)



49M2C8900L

Gaming beyond innovation

Experience luxurious gaming with this monitor's colorful QD OLED display, incredible DisplayHDR™ TrueBlack 400 certification, and booming DTS Sound™ speakers. This monitor is likely to give you a gaming escapade that's hard to forget.

Built for fast action

- Low input lag reduces time delay between devices to monitor
- SmartImage game mode optimized for gamers
- VESA ClearMR 8000: for trusted, high-quality imagery

Immersive visuals

- True 10-bit display reproduces smoother gradients on visuals
- 32:9 SuperWide screen designed to replace multiscreen setups
- DisplayHDR™ TrueBlack 400 delivers incredible shadow details
- QD OLED for superior colors and vibrant visuals

Features designed for gamers needs

- LowBlue mode and Flicker-free easy-on-the eyes viewing
- Ambiglow intensifies entertainment with halo of light
- DTS Sound™ with 30W output: for enhanced audio

The gaming advantage is yours

- Stark ShadowBoost: for enhancing visibility in dark scenes



reddot winner 2023

EVNIA

PHILIPS

QD OLED gaming monitor
Evnia 8000 49 (48.9" / 124.3 cm diag.), 5120 x 1440 (Dual QHD)

49M2C8900L/01

Highlights

QD OLED technology



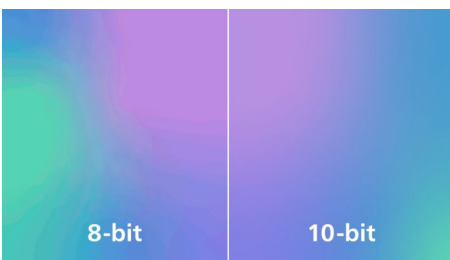
QD-OLED represents a hybrid approach that marries the OLED panels and quantum dot technology. By combining what's best of both, QD-OLED guarantees high contrast, deep blacks, and unlimited viewing angles, with the higher peak brightness and more vibrant colors.

LowBlue mode & Flicker-free



Our LowBlue Mode and Flicker-free technology have been developed to reduce eye strain and fatigue often caused by long hours in front of a monitor.

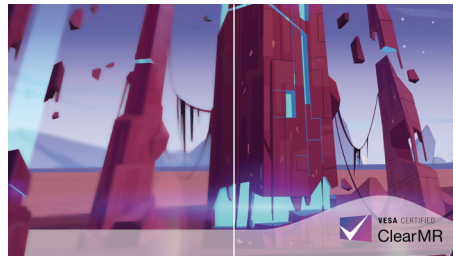
True 10-bit color depth



With this Philips true 10-bit color display, you can see color critical professional work of exceptional color accuracy and meeting

professional standards. Compared with conventional 8-bit color display, this Philips monitor produces a more natural transition between hues for smoother gradients.

VESA ClearMR 8000



Previously, methods to test blurry imagery were measured through MRPT. VESA Certified ClearMR acts as an alternative to MRPT and blur is tested with a digital high-speed camera. For monitors that are sent in and certified through VESA Certified ClearMR, you can rest assured that you will have an accurate assessment of the monitor's blur quality. Each certification is defined through a CMR range, with the highest tier being VESA ClearMR 8000. With this monitor being ClearMR 8000 classified, it has one of the highest classifications of image quality, meaning less overall blur.

Ambiglow technology



Ambiglow adds a new dimension to your viewing experience. The innovative Ambiglow technology enhances the content on the screen by creating a halo of light from the monitor. Its fast processor analyses the incoming image content and continuously

adapts the color and brightness of the emitted light to match the image. Especially suited for watching movies, sports or playing games, Philips Ambiglow offers you a unique and immersive viewing experience.

Stark ShadowBoost



This feature enhances dark scenes without overexposing lightened areas. The Stark Shadowboost feature has three selectable levels that offer texturized images with better color saturation with higher contrast so you can see better in both light and dark environments. In addition, this feature helps you fine-tune your sight so that enemies get exposed more quickly when gaming.

DTS Sound™ with 30W output



Your elevated sound experience has arrived. This monitor is equipped with four 7.5 watt speakers, ultimately adding up to a 30W output sound system. In addition to the extra wattage, the DTS Sound speakers provide a warm, detailed, and enhanced audio experience that will ultimately make your gaming experience more immersive.



Specifications

Picture/Display

- Monitor Panel Type: QD OLED
- Panel Size: 48.9 inch / 124.3 cm
- Display Screen Coating: Anti-reflection, 2H
- Effective viewing area: 1196.7 (H) x 339.2 (V) - at a 1800R curvature*
- Pixel format: RGB Q-Stripe*
- Aspect ratio: 32:9
- Maximum resolution: 5120 x 1440 @ 144 Hz (DP) 5120 x 1440 @ 60 Hz (HDMI)
- Pixel Density: 108.77 PPI
- Response time (typical): 0.03 ms (Gray to Gray)*
- Low Input Lag
- Brightness: SDR: 250 (APL 100%) nit, HDR : 450 (APL 10%) nit, HDR E/P: 1000 (APL 3%) nit
- SmartContrast: Mega Infinity DCR
- Contrast ratio (typical): 1,000,000:1
- Pixel pitch: 0.233 x 0.233 mm
- Viewing angle: @ C/R > 10, 178° (H) / 178° (V)
- Flicker-free
- HDR: DisplayHDR True Black 400 certified
- Color gamut (min.): DCI-P3: 99%*
- Color gamut (typical): NTSC 127.4%*, sRGB 153.1%*, Adobe RGB 125.2%*
- Picture enhancement: SmartImage game
- Display colors: Color support 1.07 billion colors (10 bit)
- LowBlue Mode
- Delta E: < 2 (sRGB)
- sRGB
- Ambiglow: 3-sided
- AMD FreeSync™ technology: Premium Pro
- Scanning Frequency: kHz (H) / 48 - 144 Hz (V)
- Adaptive sync
- Stark ShadowBoost

Connectivity

- Signal Input: HDMI 2.1 x 2, DisplayPort 1.4 x 1, USB-C x 1 (DP Alt mode, Power Delivery)
- USB Hub: VESA ClearMR 8000

- Audio (In/Out): Audio out
- Sync Input: Separate Sync
- HDCP: HDCP 2.3 (HDMI / DisplayPort / USB-C), HDCP 2.2 (HDMI / DisplayPort / USB-C), HDCP 1.4 (HDMI / DisplayPort / USB-C)

Power Delivery

- Version: USB PD version 3.0
- Max power delivery: USB-C up to 90 W (5V/3A, 7V/3A, 9V/3A, 10V/3A, 12V/3A, 20V/3.25A, 20V/4.5A)

Convenience

- Built-in Speakers: 7.5 W x 4, DTS
- MultiView: PIP/PBP mode, 2x devices
- KVM
- User convenience: Power On/Off, Menu/OK, Input/Up, Game Settings/Down, SmartImage game/Back
- OSD Languages: Brazil Portuguese, Czech, Dutch, English, Finnish, French, German, Greek, Hungarian, Italian, Japanese, Korean, Polish, Portuguese, Russian, Spanish, Simplified Chinese, Swedish, Turkish, Traditional Chinese, Ukrainian
- Other convenience: Kensington lock, VESA mount (100x100mm), VESA bracket
- Plug & Play Compatibility: DDC/CI, Mac OS X, sRGB, Windows 11 / 10 / 8.1 / 8
- Low blue light: Low blue light compliance*

Sound

- Output Power: 30 W, 2.2 Channel
- Sound Enhancement: DTS Sound
- Speaker Configuration: 7.5 W x 2 tweeters, 7.5 W x 2 woofers with flow port

Stand

- Height adjustment: 120 mm
- Swivel: +/- 20 degree
- Tilt: -5/15 degree

Power

- On mode: 156.50 W (typ.)
- Standby mode: 0.5 W (typ.)
- Off mode: 0.3 W (typ.)
- Energy Label Class: G
- Power LED indicator: Operation - White, Standby mode- White (blinking)
- Power supply: Internal, 100-240VAC, 50-60Hz

Dimensions

- Product with stand(max height): 1195 x 544 x 359 mm
- Product without stand (mm): 1195 x 369 x 181 mm
- Packaging in mm (WxHxD): 1290 x 300 x 475 mm

Weight

- Product with stand (kg): 13.96 kg
- Product without stand (kg): 10.82 kg
- Product with packaging (kg): 19.41 kg

Operating conditions

- Temperature range (operation): 0°C to 40 °C
- Temperature range (storage): -20°C to 60 °C
- Relative humidity: 20%-80 %
- Altitude: Operation: +12,000ft (3,658m), Non-operation: +40,000ft (12,192m)
- MTBF: 30,000 hour(s)

Sustainability

- Environmental and energy: RoHS
- Recyclable packaging material: 100 %
- Specific Substances: Mercury free, PVC / BFR free housing

Compliance and standards

- Regulatory Approvals: CB, CE Mark, FCC Class B, ICES-003, TUV/ISO9241-307, TUV-BAUART, EAC

Specifications

Cabinet

- Color: White
- Finish: Textured

What's in the box?

- Monitor with stand

- Cables: HDMI cable, DisplayPort cable, USB upstream cable, USB-C to USB-C cable, Power cable
- User Documentation
- Accessory: Remote control, VESA bracket

Issue date 2024-01-10

Version: 10.0.3

12 NC: 8670 001 90784
EAN: 87 12581 80393 3

© 2024 Koninklijke Philips N.V.
All Rights reserved.

Specifications are subject to change without notice.
Trademarks are the property of Koninklijke Philips N.V.
or their respective owners.

www.philips.com

* For best output performance, please always ensure that your graphic card is capable of achieving the maximum resolution and refresh rate of this Philips display.

* DCI-P3 Coverage based on CIE1976

* NTSC Area based on CIE1976

* sRGB Area based on CIE1931

* Adobe RGB Area based on CIE1976

* For USB-C power and charging function, your Notebook/device must support USB-C standard Power Delivery specifications. Please check with your Notebook user manual or manufacturer for more details.

* For Video transmission via USB-C, your Notebook/device must support USB-C DP Alt mode

* The monitor may look different from feature images.

* 2020 Advanced Micro Devices, Inc. All rights reserved. AMD, the AMD Arrow logo, AMD FreeSync™ and combinations thereof are trademarks of Advanced Micro Devices, Inc. Other product names used in this publication are for identification purposes only and may be trademarks of their respective companies.

* Radius of the arc of the display curvature in mm

* G-Sync compatible only supports VRR (Variable Refresh Rate) from 50Hz - 240Hz.

* The ratio of display emission light in the range from 415 - 455 nm to the display emission of 400 - 500 nm shall be less than 50%.

* Make sure to update NVIDIA® G-SYNC® driver to the latest version, see more information on NVIDIA website: <https://www.nvidia.com/>

* Make sure your graphic card supports NVIDIA® G-SYNC®

* Active pixels: 5120(H) x 1440 (V). Number of total pixels: 5136(H) x 1456 (V); extra 8 pixels on each side, space reserved for pixel orbiting.

* Response time value equal to SmartResponse. The measurement pattern is 1 horizontal line.

* The products and accessories listed on this leaflet may differ by country and region.