

PHILIPS

Wet & Dry Electric
Shaver

Shaver 1000 Series

ComfortCut Blades

3D Floating Heads

Shave wet & dry

One-touch open



S1151/00

Fast, clean shave

Philips Shaver 1000 Series gives you a fast, clean shave at an accessible price. The 27 self-sharpening ComfortCut blades, wet and dry use, and full washability make the shaver easy to use and provide excellent value.

Easy to use

- Wet and dry shaving at the sink or in the shower
- Suitable for head shaving
- 40 minutes of cordless shaving from an 8-hour charge
- Waterproof for easy cleaning or shower use
- One-touch open for easy cleaning
- Battery indicator to know when it's time to charge
- Anti-slip grip for a secure shave
- Protective cap keeps the shaving head clean between shaves
- Convenient charging

A clean shave

- ComfortCut Blades for a comfortable, clean shave
- 3D Floating Heads for a comfortable shave

Sustainable

- Made with care for you and the planet

Shaver 1000 Series

Wet & Dry Electric Shaver

S1151/00

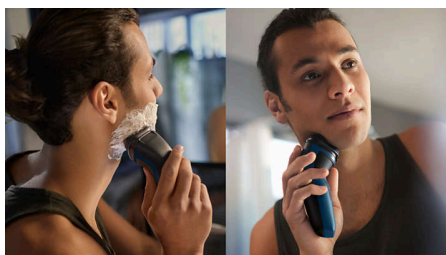
Highlights

ComfortCut Blades



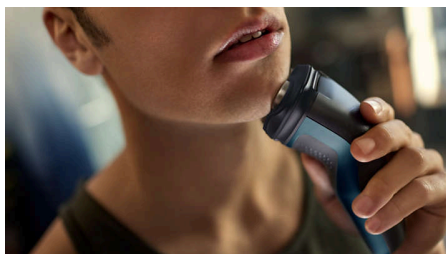
27 self-sharpening blades comfortably cut each hair right above skin level for a smooth, even finish, every time. Our self-sharpening blades stay like new for 2 years.

Wet and dry shaving



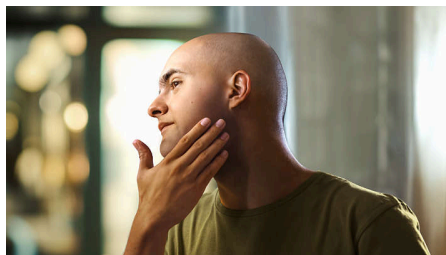
Choose a convenient dry shave, or pair with your favorite foam or gel for a refreshing wet shave, even in the shower.

3D Floating Heads



Floating heads move freely in three directions to keep contact with the curves of your face without nicking your skin.

Suitable for head shaving



The shaver is designed to be a versatile solution that allows you to confidently shave both your face and head

One-touch open



The shaver head flips open at the touch of a button to rinse clean under running water.

40 minutes of cordless shaving



A durable NiMH battery provides 40 minutes of shaving power on an 8h charge. That's good for about 13 shaves.

Rubber grip



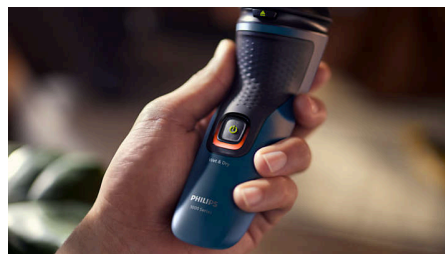
Never lose your grip. The ergonomic handle with rubber stays secure and comfortable, even when wet.

Waterproof (IPX7)



Rinse under running water or shave in the shower. The IPX7 waterproofness rating means it can be submerged in one meter of water for up to 30 minutes.

Battery indicator



Don't get caught with an empty battery. The battery indicator lets you know if the battery is low, empty, or charging.

Shaver 1000 Series

Wet & Dry Electric Shaver

S1151/00

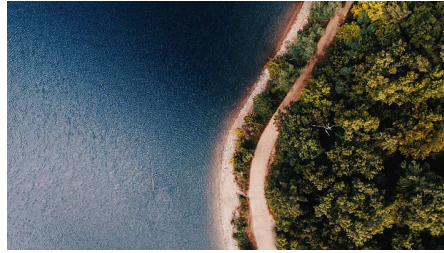
Highlights

USB-A Charging



At Philips, we drive sustainability in all aspects of product creation. Our ambition is to reduce waste and minimize the number of USB adaptors we put in the market. Should you need an adapter, a suitable supply unit is available via: www.philips.com/support

Made with care for the planet



The packaging of this shaver is plastic-free and made out of 90% recycle material, while our blade production facility uses 100% renewable electricity.

Protective cap



Keep the shaving head clean and safe between shaves or when traveling.

Shaver 1000 Series

Wet & Dry Electric Shaver

S1151/00

Specifications

Accessories

Maintenance: Protective cap

Power

Run time: 40 min / 13 shaves

Charging time: 8 hours full charge

Battery type: NiMH

Design

Color: Blue Malibu

Handle: Ergonomic grip & handle

Service

Replacement head: Replace every 2 yrs with SH30

2-year warranty

Shaving Performance

Contour following: 3D Flex Heads

Shaving system: ComfortCut Blade System, 27 self-sharpening blades, 55.000 cuts/minute

Ease of use

Charging: USB-A Charging (5V $\overline{\text{--}}$ / $\geq 1\text{A}$)

Cleaning: One-touch open, Fully washable

Display: Charging indicator

Wet & Dry: Shave wet or dry

Operation: Cordless use only

Waterproof: Waterproof IPX7, Showerproof

