

DI61  
 DI66



# Quick Start Guide

**PHILIPS**

## ⚠ Important safety instructions

### Warning

- The electrical network is rated as dangerous. The only way to turn off the charger is to unplug the power at the outlet. You must therefore ensure that the electrical outlet is always easily accessible.
- Refer to the safety information before using the product.
- Hereby, TP Vision Europe B.V. declares that this product is in compliance with the essential requirements and other relevant provisions of Directive RED 2014/53/EU. The Declaration of conformity is available on the website: [www.philips.com/support](http://www.philips.com/support)
- Use only the power supply type listed in the user instructions.
- Use only the battery type listed in the user instructions.
- Do not allow the product to come into contact with liquids.
- Risk of explosion if an incorrect battery type is inserted in the device.
- Dispose of used batteries according to the instructions.
- When the handset rings or when the handsfree is activated, keep the handset away from your ear to avoid hearing damage.

## 1 Overview

### During a call

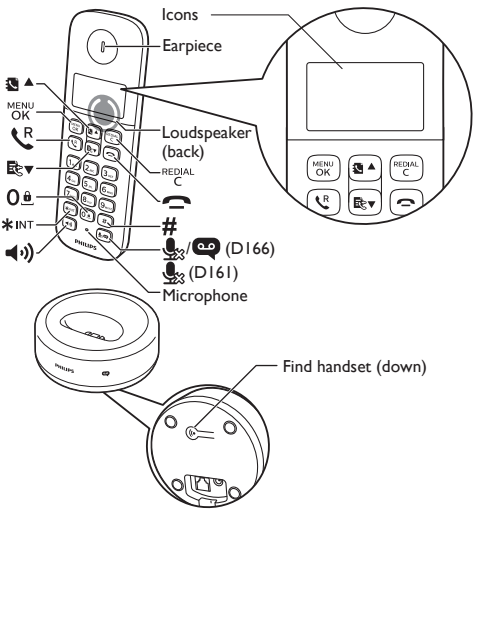
- MENU OK** Enter the options menu.
- REDIAL C** Access the redial list.
- ▲ ▼** Adjust the volume.
- R** Recall (network dependent).
- END** End a call.
- #** Enter a pause (press and hold the key).
- 🔊** Mute/unmute the loudspeaker.
- 🗣️** Mute/unmute the microphone.
- MENU OK** Confirm / Select / Access the options menu.
- REDIAL C** Cancel / Back
- ▲ ▼** Up / Down
- END** Exit menu.

### Standby

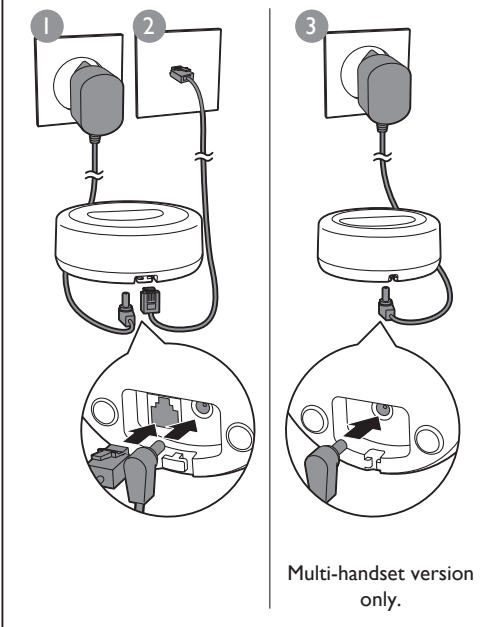
- MENU OK** Access the main menu.
- REDIAL C** Access the redial list.
- 📖** Phonebook
- 📞** Call log
- R** Make and answer calls.
- 📞** Switch the handset on or off (press and hold the key).
- \*INT** Make an intercom call (press and hold the key).
- 🔒** Lock/unlock the keypad (press and hold the key).
- 🗣️** Make and receive calls through the loudspeaker.
- 🗣️** For DI66: Press to play a new message recorded in the answering machine. / Access to the answering machine menu.
- In text input**
- REDIAL C** Delete text.
- ␣** Enter a space.

### Icons

- 📶** This symbol shows the connection status between the handset and base station. The more bars are shown, the better the signal strength is.
- 📞** This symbol remains steadily on when browsing blocked calls in the call log.
- 📞** This symbol indicates an outgoing call in the redial list.
- 📞** This symbol flashes when you have missed a call or when you are browsing new missed calls. It is steady when browsing read missed calls in the call log.
- 📞** This symbol flashes when you receive a call. This symbol is displayed steadily during a call.
- 🔊** The loudspeaker is on.
- 🎵** The ringer is off.
- 📞** For DI66: Answering machine: this symbol flashes when there is a new message or when the memory is full. This symbol is displayed when the answering machine is on.
- ✉️** Voice message indicator: this symbol flashes for new messages, it is steady for reviewed messages. \* This function is network dependent.
- ▲ ▼** This symbol is displayed when you scroll up/down a list or increase and decrease the volume.
- ▶** Characters remaining on the right. Press **REDIAL C** to play.

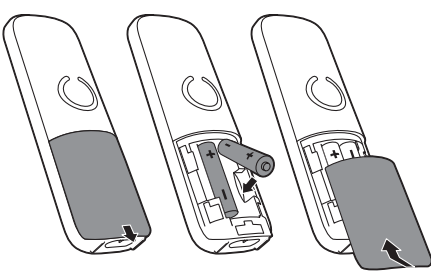


## 2 Connection



## 3 Let's Get Started

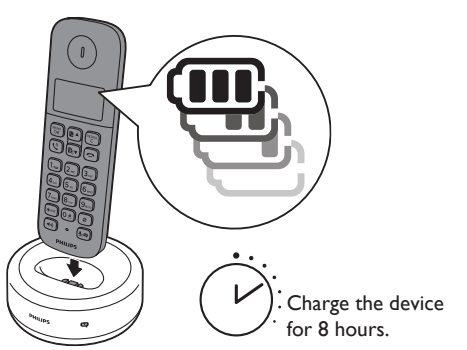
### Inserting the batteries



### Phone setup

- 1 Set the country and language if prompted.
- 2 Set the date and time.
  - If the time is in 12-hour format, press **▲** / **▼** key to select [AM] or [PM] (country dependent).

### Charge your phone



- 🔋** > 70%
- 🔋** 40% - 70%
- 🔋** 10% - 40%
- 🔋** Flashing: low battery
- 🔋** Scrolling: charging in progress.

## 4 How to use

### Phonebook

- 1 Press <sup>MENU</sup>OK.
- 2 Select [PHONEBOOK] > [ADD NEW].
- 3 Follow on-screen instructions.

Call from the phonebook

- 1 Press .
- 2 Select a record and press .

Direct access memory

You have up to 2 direct access memories (keys 1 and 2). To dial the saved phone number automatically, press and hold on the keys in standby mode. Depending on your country, keys 1 and 2 are preset to the voice mail number and information service number of your service provider respectively (network dependent).

### Call log

Call from the call log

- 1 Press .
- 2 Select a record and press .

View record

Press > <sup>MENU</sup>OK > [VIEW].

Save record

- 1 Press > <sup>MENU</sup>OK > [SAVE NUM.].
- 2 Follow on-screen instructions.

Delete record

- 1 Press > <sup>MENU</sup>OK > [DELETE].
- 2 Follow on-screen instructions.

### Redial

Call from the redial list.

- 1 Press <sup>REDIAL</sup>C.
- 2 Select a record and press .

Save record

- 1 Press <sup>REDIAL</sup>C > <sup>MENU</sup>OK > [SAVE NUM.].
- 2 Follow on-screen instructions.

Delete record

- 1 Press <sup>REDIAL</sup>C > <sup>MENU</sup>OK > [DELETE].
- 2 Follow on-screen instructions.

### Integrated answering machine (for DI66 Only)

Record an announcement

- 1 Press <sup>MENU</sup>OK > [ANSWER & REC] > [ANNOUNCEMENT].
- 2 Follow on-screen instructions.

Listen to the incoming messages

Press <sup>MENU</sup>OK > [ANSWER & REC] > [PLAY].

Delete incoming messages

- 1 When you listen to the message, press <sup>MENU</sup>OK to enter the options menu.
- 2 Select [DELETE], then press <sup>MENU</sup>OK to confirm.

### Register additional handsets

You can register additional handsets to the base station.

- 1 Press and hold key on the base station for 10 seconds.
- 2 Press <sup>MENU</sup>OK.
- 3 Select [SERVICES] > [REGISTER], then press <sup>MENU</sup>OK to confirm.
- 4 Enter the system PIN/Passcode (0000).
- 5 Press <sup>MENU</sup>OK to confirm PIN/Passcode.
  - » Registration is complete in less than 2 minutes.

### Restore default settings

You can reset your phone settings to the original factory settings.

- 1 Press <sup>MENU</sup>OK.
- 2 Select [SERVICES] > [RESET], then press <sup>MENU</sup>OK to confirm.
- 3 Follow on-screen instructions.

#### Note

- You can recover the initial PIN/Passcode by following this procedure.

## Technical specifications

### Battery

Philips: 2 x AAA NiMH 1.2 V Rechargeable 300mAh batteries. Use only the supplied batteries. Adapter (base and charger)

PHILIPS:	PHILIPS:
EP19A-060040WXEZ	MN0063-E060040
Input: 100-240 V ~, 50/60 Hz 0.2A max.	100-240 V ~, 50/60 Hz 0.2A max.
Output: 6VdC 0.4A	6VdC 0.4A

Phonebook: 50 entries  
 Call log: 20 entries  
 Talk time: 10 hours,  
 Standby time: 200 hours,  
 Frequency Bands: 1881.792-1897.344MHz  
 Max power: 20.5dBm  
 Power Consumption: < 0.7 W

#### Note

- You can install a DSL (digital subscriber line) filter to prevent noise and caller ID problems caused by the DSL interference.

## ? Frequently Asked Question

No signal bar is displayed on the screen.

- The handset is out of range. Move it closer to the base station.
- If the handset is in [Unregistered] status, register your handset. (See the section on "Register additional handsets").

If I fail to pair (register) the additional handsets to the base station, what do I do?

- Your base memory is full. Select <sup>MENU</sup>OK > [SERVICES] > [UNREGISTER] to unregister the unused handsets and try again.
- If registration fails, unplug the power adapter from the base station and plug it back. Wait for 15 seconds, and then repeat the registration procedure.

I have chosen a wrong language which I cannot read, what do I do?

- 1 Press to go back to the standby screen.
- 2 Press <sup>MENU</sup>OK to access the main menu screen.

3 The following options will appear on the screen:

[TELEFOONINST]	>	[TAAL]
[PHONE SETUP]	>	[LANGUAGE]
[CONFIG. TEL]	>	[LANGUE]
[TEL.-SETUP]	>	[SPRACHE]
[CONF. TELEF.]	>	[LINGUA]

- 4 Select them to access the language options.
- 5 Select your own language.

My handset is in searching or unavailable status, what do I do?

- Make sure that the base station has power supply.
- Register the handset to the base station.
- Move the handset closer to the base station.

I cannot change the settings of my voice mail. What do I do?

The voice mail service is managed by your service provider but not the phone itself. Contact your service provider to change the settings.

No display

- Make sure the batteries are charged.
- Make sure there are power and phone connections.

The handset on the charger does not charge.

- Make sure the batteries are inserted correctly.
- Make sure the handset is placed properly on the charger. The battery icon animates when charging.
- Make sure the docking tone setting is turned on. When the handset is placed correctly on the charger, you can hear a docking tone.
- The charging contacts are dirty. Disconnect the power supply first and clean the contacts with a damp cloth.
- Batteries are defective. Purchase new ones with the same specifications.

Bad audio (crackles, echo, etc.)

- The handset is almost out of range. Move it closer to the base station.
- The phone receives interference from the nearby electrical appliances. Move the base station away. The walls are too thick. Move the base station away.

The handset does not ring.

Make sure the handset ringtone is turned on.

The caller ID does not display.

- The service is not activated. Check with your service provider.
- The caller's information is withheld or unavailable.



**i**

[www.philips.com/support](http://www.philips.com/support)

To access the user instructions online, use the reference model number written on the product label at the bottom of the base station.

This symbol on a product indicates that the device is compliant with the European Directive 2012/19/EU.

2023 © MMD Hong Kong Holding Limited All rights reserved.

This product has been manufactured by and is sold under the responsibility of MMD Hong Kong Holding Limited. MMD Hong Kong Holding Limited is the warrantor in relation to this product.

Philips and the Philips Shield Emblem are registered trademarks of Koninklijke Philips N.V. and are used under license from Koninklijke Philips N.V.



UMS\_DI61/166  
63\_V1.0