

PHILIPS

NORELCO



Wet & Dry Electric Shaver

Shaver 3600

-A versatile solution for a clean, close shave – for use on head and face

5D Pivot & Flex Heads

ComfortCut Blades

Anti-Corrosion Shaving System



S3243/91

Smooth, clean shave. Even on sensitive skin With SkinProtect Technology

Philips Norelco Shaver 3600 Wet & Dry Electric Shaver gives you a comfortable, clean shave for wet and dry use, even on sensitive skin. 5D Pivot & Flex Heads, ComfortCut blades and full washability help ensure a smooth, skin-friendly result

Easy to use

- Suitable for head shaving
- 60 minutes of cordless shaving from a 1-hour charge
- Pop-up trimmer for your mustache and sideburns
- One-touch open for easy cleaning
- Anti-slip grip for a secure shave
- 3-level battery indicator to know when it's time to charge
- Convenient charging

A clean shave

- ComfortCut Blades for a comfortable, clean shave

Skin Protect technology

- 5D Pivot & Flex Heads stay close to every angle and curve
- Wet and dry shaving at the sink or in the shower
- Anti-Corrosion Shaving System respects the skin

Sustainable

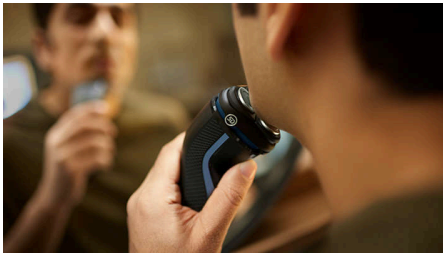
Shaver 3600

Wet & Dry Electric Shaver

S3243/91

Highlights

5D Pivot & Flex Heads



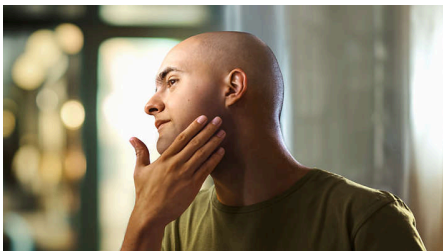
By flexing and pivoting in five directions, the head follows every curve of your face cutting just above skin level for a clean, comfortable shave even on sensitive skin.

ComfortCut Blades



27 self-sharpening blades comfortably cut each hair right above skin level for a smooth, even finish, every time. Our self-sharpening blades stay like new for 2 years.

Suitable for head shaving



The shaver is designed to be a versatile solution that allows you to confidently shave both your face and head

Wet and dry shaving



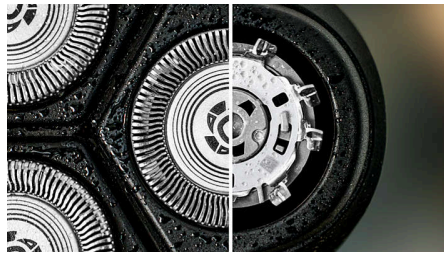
Choose a convenient dry shave, or pair with your favorite foam or gel for a refreshing wet shave, even in the shower.

60 minutes of cordless shaving



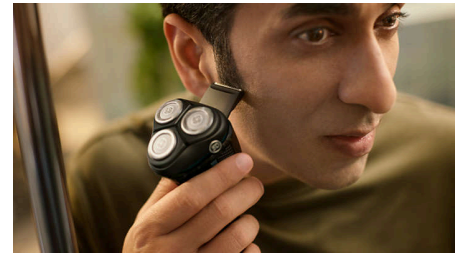
In just an hour, the durable Li-ion battery is fully charged for about 20 shaves. In a hurry? A 5-minute quick charge gives you enough power for one shave.

Anti-Corrosion Shaving System



Our shaver blades are made from surgical-grade hypoallergenic steel to resist corrosion, prevent impurities, and protect your skin.

Pop-up trimmer



Refine and define your mustache and sideburns to complete your look with the pop-up trimmer.

One-touch open



The shaver head flips open at the touch of a button to rinse clean under running water.

Rubber grip



Never lose your grip. The ergonomic handle with rubber stays secure and comfortable, even when wet.

Shaver 3600

Wet & Dry Electric Shaver

S3243/91

Highlights

3-level battery indicator



Don't get caught with an empty battery. The battery indicator lets you know if the battery is low, empty, or charging.

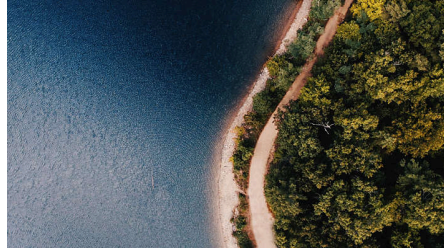
USB-A Charging



At Philips, we drive sustainability in all aspects of product creation. Our ambition is to reduce waste and minimize the number of USB adaptors

we put in the market. Should you need an adapter, a suitable supply unit is available via: www.philips.com/support

Made with care for the planet



The packaging of this shaver is plastic-free and made out of 90% recycle material, while our blade production facility uses 100% renewable electricity.

Travel Pouch



Keep it safe and tidy with the convenient travel pouch. Home or away, you're always ready to go.

Shaver 3600

Wet & Dry Electric Shaver

S3243/91

Specifications

Accessories

Pouch: Travel pouch

Maintenance: Protective cap

Pop-up trimmer included

Power

Charging time: 1 hour full charge

Run time: 60 min / 20 shaves

Battery type: Lithium-ion

Quick charge: Yes, 5 minutes

Design

Color: Storm Blue

Handle: Non-slip rubber handle

Service

Replacement head: For best results, replace shaving heads every 24 months. Use SH30 replacement heads, sold separately.

2-year warranty

Shaving Performance

Contour following: 5D Pivot & Flex Heads

Shaving system: ComfortCut Blade System, 27 self-sharpening blades, 55.000 cuts/minute

Ease of use

Cleaning: One-touch open, Fully washable

Display: 3-level battery indicator

Wet & Dry: Shave wet or dry

Operation: Cordless use only

Waterproof: Waterproof IPX7, Showerproof

Skin Protect technology

Skin Protection: Anti-Corrosion Shaving System

