

Always there to help you

Register your product and get support at  
www.philips.com/welcome

DCM129

Question?  
Contact  
Philips



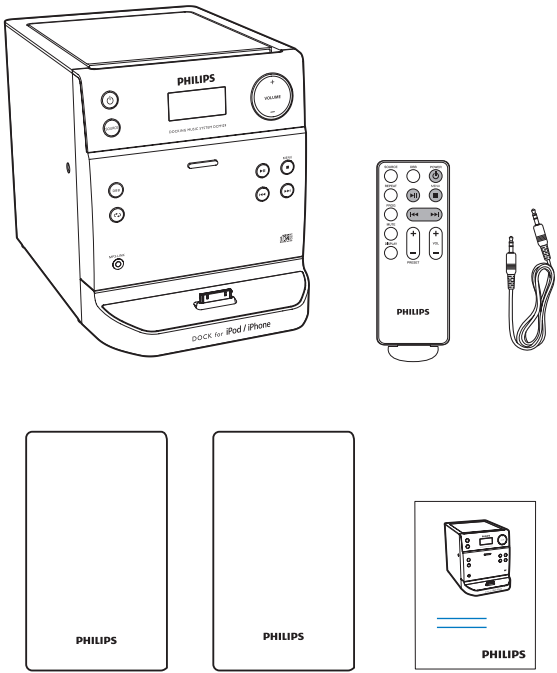
Short User Manual  
简明用户手册

PHILIPS

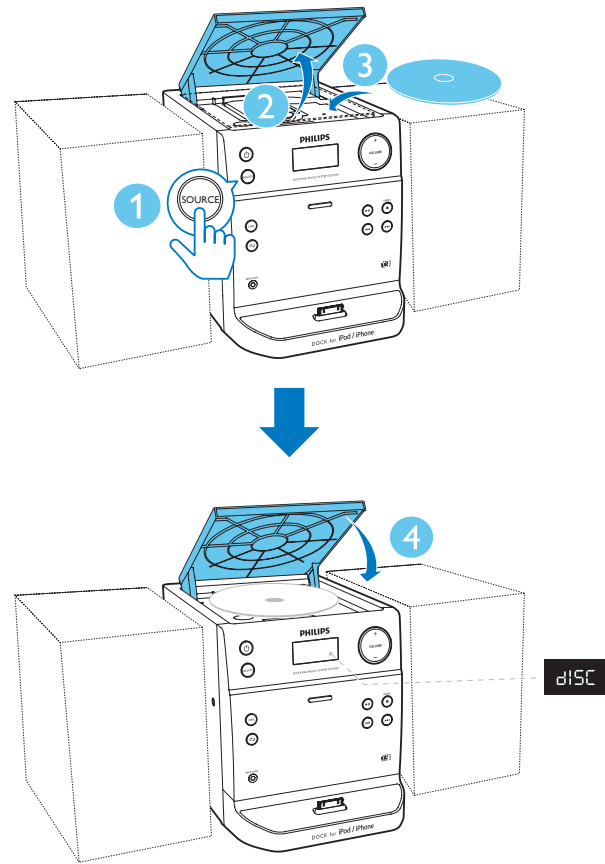
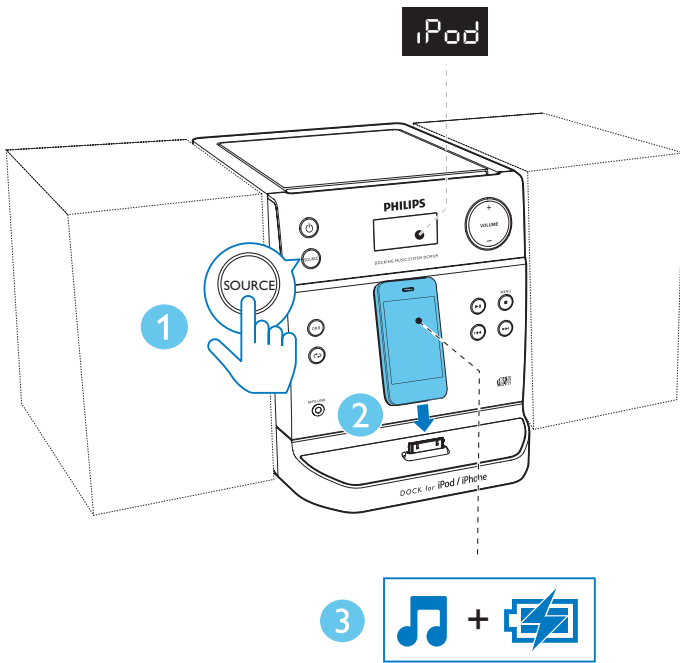
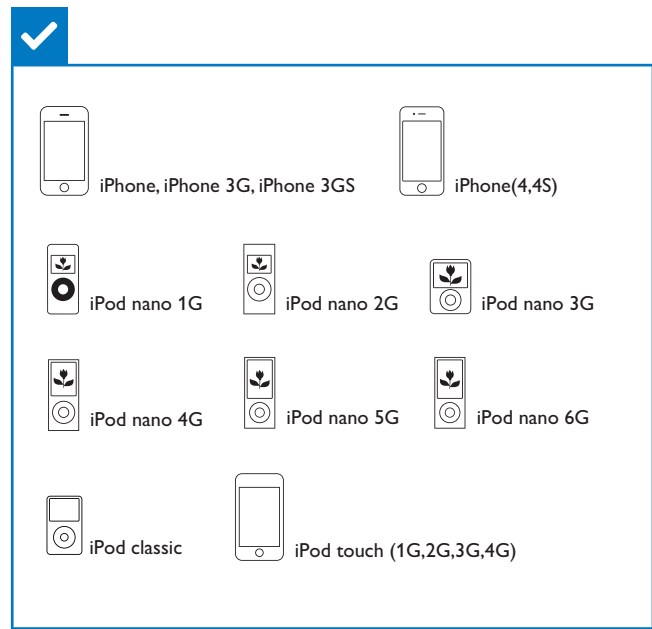
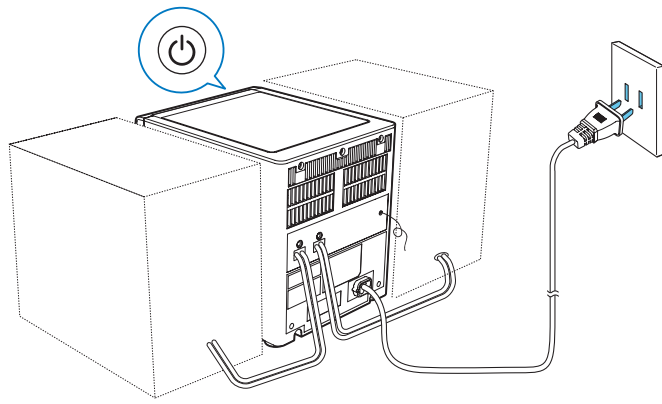
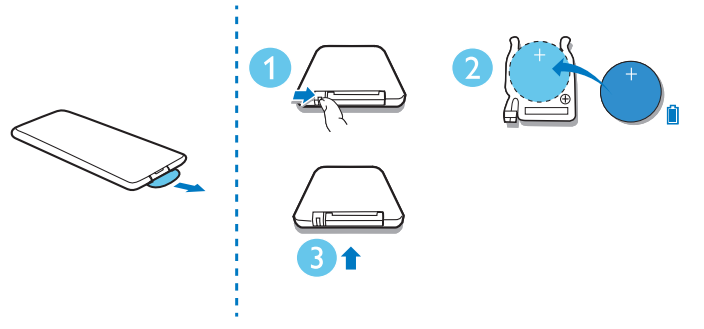
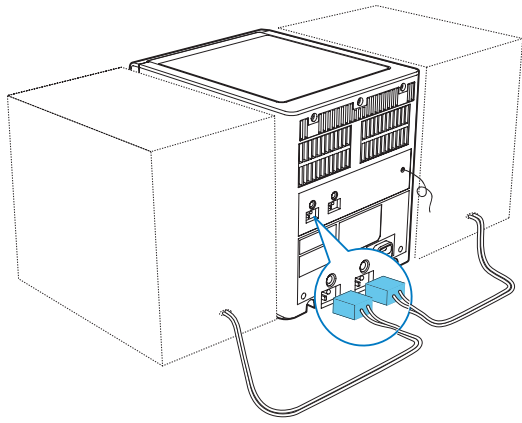


Specifications are subject to change without notice  
© 2013 Koninklijke Philips Electronics N.V.  
All rights reserved.

DCM129\_93\_Short User Manual\_V1.0



Before using your product, read all accompanying safety information.  
使用产品之前，请先阅读所有随附的安全信息。

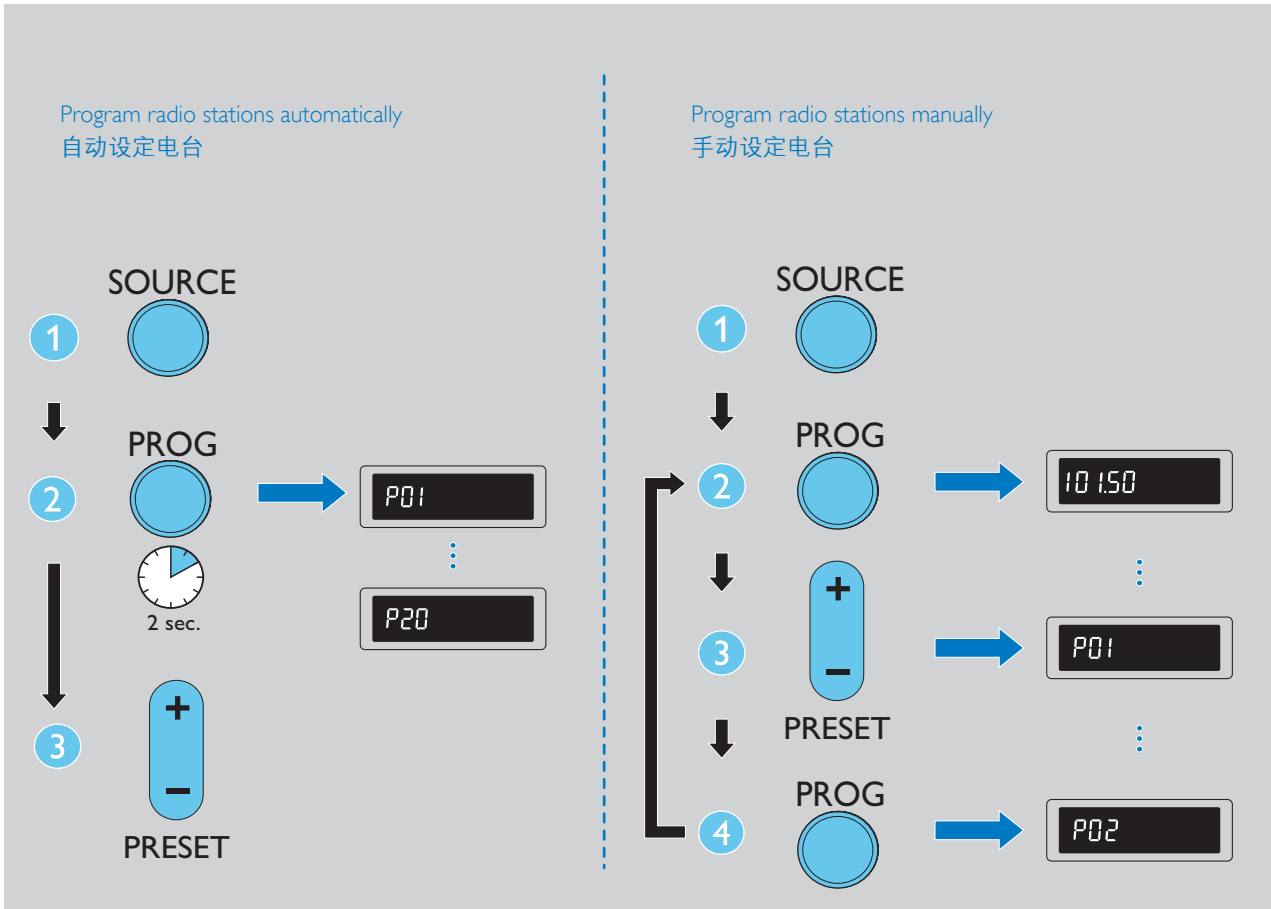
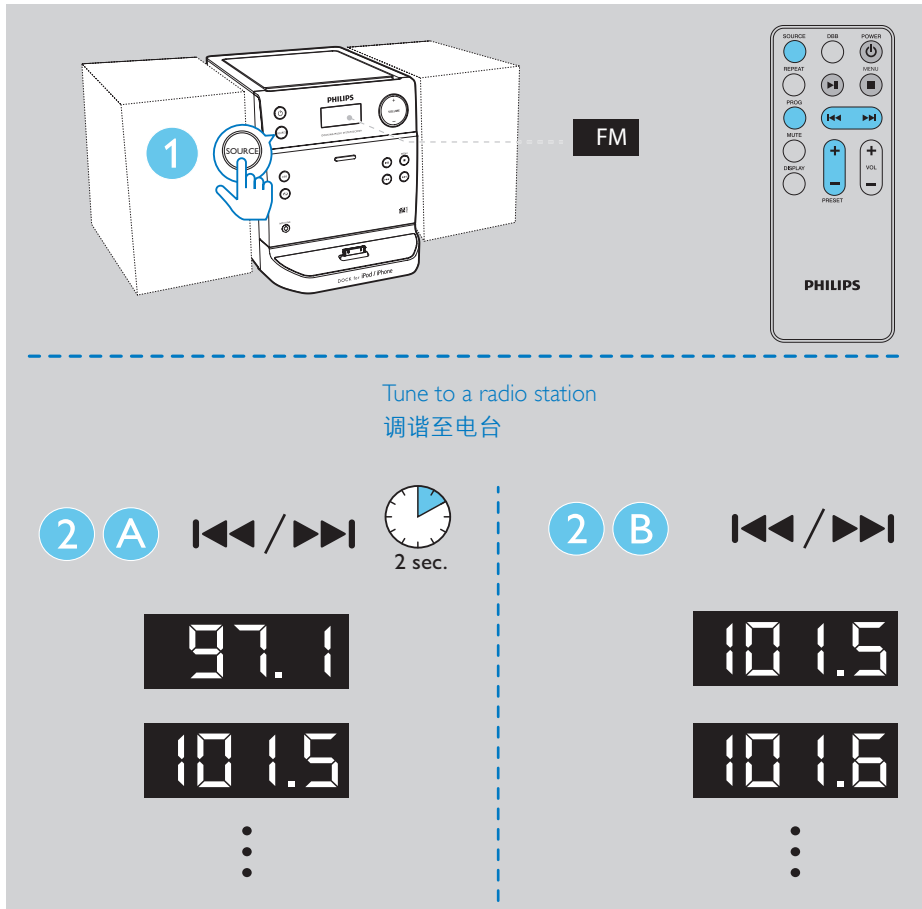


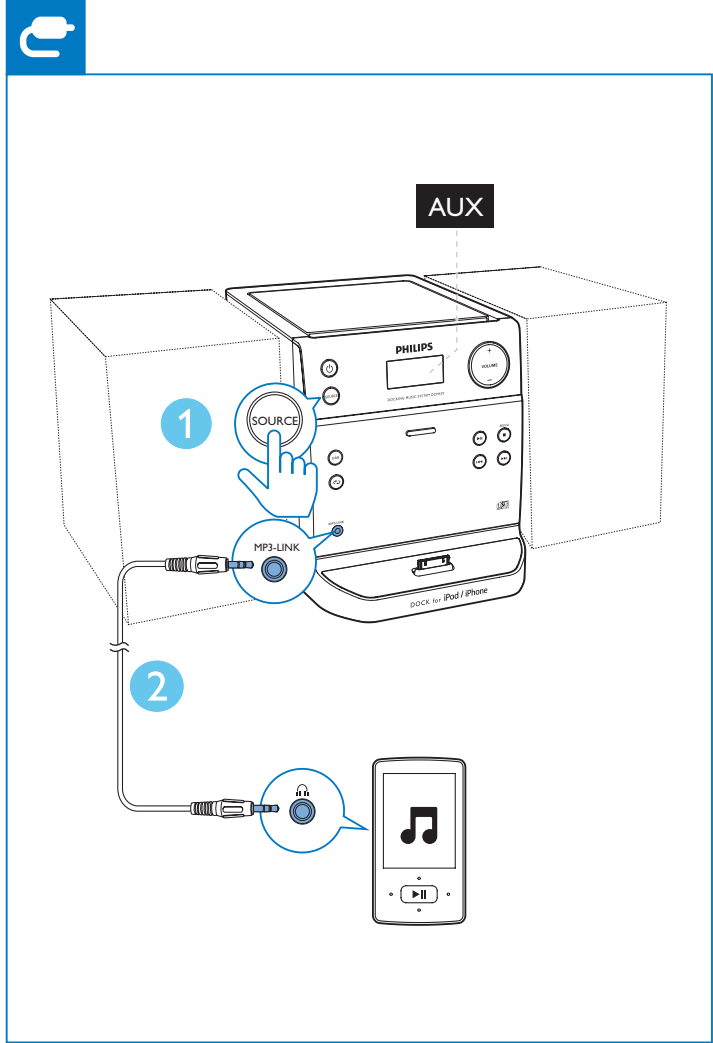
Control play

▶	Pause or resume play.
■	Stop play.
◀▶	Press to skip to another track. Press and hold for over 3 seconds to search within a track.
VOL +/-	Increase or decrease the volume.
MUTE	Mute or restore sound.
DBB	[DBB-0]: DBB off [DBB-1]: DBB on
REPEAT	[r1]: Play the current track repeatedly. [rA]: Play all tracks repeatedly.
DISPLAY	Show current status..

控制播放

▶	暂停或继续播放。
■	停止播放。
◀▶	按下可跳至其他曲目。 按住超过 3 秒钟可在曲目内搜索。
VOL +/-	提高或降低音量。
MUTE	静音或恢复声音。
DBB	[DBB-0]: DBB 关 [DBB-1]: DBB 开
REPEAT	[r1]: 重复播放当前曲目。 [rA]: 重复播放所有曲目。
DISPLAY	显示当前状态。





## English

# 1 Important

## Safety



This 'bolt of lightning' indicates uninsulated material within the device may cause an electrical shock. For the safety of everyone in your household, please do not remove the covering.

The 'exclamation mark' calls attention to features for which you should read the enclosed literature closely to prevent operating and maintenance problems.

WARNING: To reduce the risk of fire or electric shock, the device should not be exposed to rain or moisture and objects filled with liquids, such as vases, should not be placed on the device.

CAUTION: To prevent electric shock, fully insert the plug. (For regions with polarized plugs: To prevent electric shock, match wide blade to wide slot.)

## Important Safety Instructions

- Follow all instructions.
- Heed all warnings.
- Do not use this device near water.
- Clean only with dry cloth.
- Do not block any ventilation openings. Install in accordance with the manufacturer's instructions.
- Do not install near any heat sources such as radiators, heat registers, stoves, or other devices (including amplifiers) that produce heat.
- Protect the power cord from being walked on or pinched, particularly at plugs, convenience receptacles, and the point where they exit from the device.
- Only use attachments/accessories specified by the manufacturer.
- Use only with the cart, stand, tripod, bracket, or table specified by the manufacturer or sold with the device. When a cart is used, use caution when moving the cart/device combination to avoid injury from tip-over.



- Unplug this device during lightning storms or when unused for long periods of time.
- Refer all servicing to qualified service personnel. Servicing is required when the device has been damaged in any way, such as power-supply cord or plug is damaged, liquid has been spilled or objects have fallen into the device, the device has been exposed to rain or moisture, does not operate normally, or has been dropped.
- Battery usage CAUTION – To prevent battery leakage which may result in bodily injury, property damage, or damage to the unit:
  - Install all batteries correctly, + and - as marked on the unit.
  - Do not mix batteries (old and new or carbon and alkaline, etc.).
  - Batteries (packed or installed) shall not be exposed to excessive heat such as sunshine, fire or the like.
  - Remove batteries when the unit is not used for a long time.
- The device shall not be exposed to dripping or splashing.
- Do not place any sources of danger on the device (e.g. liquid filled objects, lighted candles).
- Where the MAINS plug or an appliance coupler is used as the disconnect device, the disconnect device shall remain readily operable.

## Warning

- Never remove the casing of this device.
- Never lubricate any part of this device.
- Never place this device on other electrical equipment.
- Keep this device away from direct sunlight, naked flames or heat.
- Never look into the laser beam inside this device.
- Ensure that you always have easy access to the power cord, plug, or adaptor to disconnect this device from the power.



## Risk of swallowing coin battery

- The product/remote control may contain a coin/button type battery, which can be swallowed. Keep the battery out of reach of children at all times! If swallowed, the battery can cause serious injury or death. Severe internal burns can occur within two hours of ingestion.
- If you suspect that a battery has been swallowed or placed inside any part of the body, seek immediate medical attention.
- When you change the batteries, always keep all new and used batteries out of reach of children. Ensure that the battery compartment is completely secure after you replace the battery.
- If the battery compartment cannot be completely secured, discontinue use of the product. Keep out of reach of children and contact the manufacturer.

# 2 Notice

Any changes or modifications made to this device that are not expressly approved by Philips Consumer Lifestyle may void the user's authority to operate the equipment.

Your product is designed and manufactured with high quality materials and components, which can be recycled and reused.

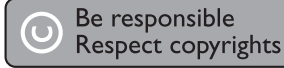
Never dispose of your product with other household waste. Please inform yourself about the local rules on the separate collection of electrical and electronic products and batteries. The correct disposal of these products helps prevent potentially negative consequences on the environment and human health.

Your product contains batteries, which cannot be disposed of with normal household waste. Please inform yourself about the local rules on separate collection of batteries. The correct disposal of batteries helps prevent potentially negative consequences on the environment and human health. Please visit [www.recycle.philips.com](http://www.recycle.philips.com) for additional information on a recycling center in your area.

## Environmental information

All unnecessary packaging has been omitted. We have tried to make the packaging easy to separate into three materials: cardboard (box), polystyrene foam (buffer) and polyethylene (bags, protective foam sheet).

Your system consists of materials which can be recycled and reused if disassembled by a specialized company. Please observe the local regulations regarding the disposal of packaging materials, exhausted batteries and old equipment.



This item incorporates copy protection technology that is protected by U.S. patents and other intellectual property rights of Rovi Corporation. Reverse engineering and disassembly are prohibited.



"Made for iPod" and "Made for iPhone" mean that an electronic accessory has been designed to connect specifically to iPod or iPhone respectively, and has been certified by the developer to meet Apple performance standards. Apple is not responsible for the operation of this device or its compliance with safety and regulatory standards. Please note that the use of this accessory with iPod or iPhone may affect wireless performance.

iPod and iPhone are trademarks of Apple Inc., registered in the U.S. and other countries.

This apparatus includes this label:



Class II equipment symbol:



This symbol indicates that this product has a double insulation system.

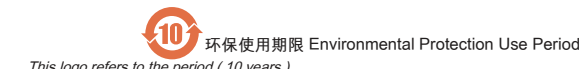
## Note

- The type plate is located on the bottom of the apparatus.

部件名称 Name of the Parts	有毒有害物质或元素 Hazardous/toxic Substance					
	铅 (Pb, Lead)	汞 (Hg, Mercury)	镉 (Cd, cadmium)	六价铬 (Chromium 6+)	多溴联苯 (PBB)	多溴二苯醚 (PBDE)
Housing 外壳	○	○	○	○	○	○
Loudspeakers 喇叭单元	○	○	○	○	○	○
PWBs 电路板组件	x	○	○	○	○	○
Accessories (Remote control & cables) 附件 (遥控器, 电源线, 连接线)	x	○	○	○	○	○

○: 表示该有毒有害物质在该部件所有均质材料中的含量均在 SJ/T11363 - 2006 标准规定的限量要求以下。  
○: Indicates that this toxic or hazardous substance contained in all of the homogeneous materials for this part is below the limit requirement in SJ/T11363 - 2006.

x: 表示该有毒有害物质至少在该部件的某一均质材料中的含量超出 SJ/T11363 - 2006 标准规定的限量要求。  
x: Indicates that this toxic or hazardous substance contained in at least one of the homogeneous materials used for this part is above the limit requirement in SJ/T11363 - 2006.



电子信息产品中含有的有毒有害物质或元素在正常使用的条件下不会发生外泄或突变, 电子信息产品用户使用该电子信息产品不会对环境造成严重污染或对其人身、财产造成严重 损害的期限。

This logo refers to the period ( 10 years ) during which the toxic or hazardous substances or elements contained in electronic information products will not leak or mutate so that the use of these [substances or elements] will not result in any severe environmental pollution, any bodily injury or damage to any assets.

## Specifications

Rated Output Power	2 × 2 W RMS
Disc Diameter	12 cm/8 cm
Support Disc	CD-DA, CD-R, CD-RW, MP3-CD
Tuning Range	FM: 87.5-108 MHz
Tuning grid	50 KHz
iPod/iPhone charge	5 V, 1 A
AC power	220-240 V~, 50/60 Hz
Operation Power Consumption	14W
Standby Power Consumption	<0.5 W
Dimensions	
- Main Unit (W × H × D)	152 × 174 × 236 mm
- Speaker Box (W × H × D)	132 × 175 × 158 mm
Weight	
- Main Unit	1.1 kg
- Speaker Box	2 × 0.9 kg

## 中文简体

# 1 注意事项

## 安全



此“闪电标志”表示设备中的未绝缘材料可能导致触电。为了您家中每个人的安全，请勿卸下产品外盖。

“惊叹号”表示需要对某些功能多加注意，您应仔细阅读附带的说明书以防止出现操作和维护问题。

警告：为减少火灾或触电危险，此设备应避免淋雨或受潮，不得将装有液体的物体（如花瓶）放在此设备上。

注意：为防止触电，请完成插入插头。（对于具有极化插头的区域：为防止触电，请将宽插片插入宽插槽。）

## 重要安全说明

- 遵循所有说明。
- 注意所有警告。
- 不要在靠近水的地方使用本设备。
- 只能使用干布进行清洁。
- 不要堵塞任何通风口。按照制造商的说明进行安装。
- 不要在任何热源附近安装，如散热器、散热器、炉具或其它发热设备（包括功放器）。
- 防止电源线被踩踏或挤夹，特别是在插头、电源插座和设备电源线出口位置。
- 仅使用制造商指定的附件/配件。
- 仅使用制造商指定或随设备销售的手推车、支座、三脚架、支架或桌台。使用手推车时，请小心移动载有产品的手推车/设备，以避免翻倒造成伤害。



- 在雷电天气期间或长期不用的情况下，请拔下本设备的电源插头。
- 所有维修均应由合格的维修人员来执行。本设备有任何损坏时，如电源线或插头损坏，液体泼溅到或物体跌落到设备上，设备淋雨或受潮，无法正常运行，或者跌落，均需要进行维修。
- 电池使用注意事项：为防止电池泄漏而造成人身伤害、财产损失或装置损坏，请：
  - 按照装置上标明的 + 极和 - 极，正确安装所有电池。
  - 请勿混合使用电池（旧电池与新电池或碳电池与碱性电池，等等）。
  - 不可将电池（电池组或安装的电池）置于高温环境，如阳光直射处、明火或类似环境。
  - 若打算长期不用本装置，应取出电池。

- 切勿将设备暴露于漏水或溅水环境下。
- 不要将任何危险源放在本设备上（例如装有液体的物体、点燃的蜡烛）。
- 将电源插头或产品耦合器用作断开设备时，该断开设备应可以随时使用。
- 主插头用作断路装置，在不使用时应将插头拔掉，应保证与电网电源完全切断。

## 警告

- 切勿拆下本设备的外壳。
- 切勿润滑本设备的任何部件。
- 切勿将本设备放在其他电器设备上面。
- 应让本设备远离阳光直射、明火或高温。
- 切勿直视本设备内部的激光束。
- 确保始终可轻易地接触到电源线、电源插头或适配器，以便于将本设备从电源上断开

## 存在吞咽纽扣电池的危险

- 产品/遥控器可能包含纽扣式/按钮式电池，容易被吞咽。始终将电池放在儿童接触不到的地方！如不慎吞咽，电池可能导致严重受伤或死亡。摄入后 2 小时内可能发生严重的内部烧伤。
- 如果您怀疑电池不慎被吞咽或位于体内的任何部位，请立即就医。
- 更换电池时，请务必将所有新旧电池放在儿童接触不到的地方。更换电池后，确保电池仓完全紧闭。
- 如果电池仓无法完全紧闭，请不要继续使用产品。放在儿童接触不到的地方并联系制造商。

# 2 注意

如果用户未经 Philips 优质生活部门的明确许可而擅自对此设备进行更改或修改，则可能导致其无权操作此设备。

本产品采用可回收利用的高性能材料和组件制造而成。

切勿将本产品与其它生活垃圾一起处理。请自行了解当地关于分类收集电子、电气产品及电池的规定。正确弃置这些产品有助于避免对环境和人体健康造成潜在的负面影响。

本产品所含的电池不能与一般的生活垃圾一同弃置。

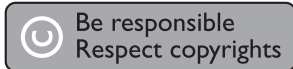
请自行了解当地关于分类收集电池的规定。正确弃置电池有助于避免对环境和人类健康造成潜在的负面影响。

关于您所在地区回收中心的更多信息，请访问 [www.recycle.philips.com](http://www.recycle.philips.com)。

## 环境信息

已省去所有不必要的包装。我们努力使包装易于分为三种材料：纸板（盒）、泡沫塑料（缓冲物）和聚乙烯（袋、保护性泡沫片）。

您的系统包含可回收利用的材料（如果由专业公司拆卸）。请遵守当地有关包装材料、废电池和旧设备的处理的规定。



本商品采用版权保护技术，受美国 专利和 Rovi Corporation 的其它知识产权保护。禁止反向工程或反汇编。



“Made for iPod”和“Made for iPhone”表示电子附件专为连接 iPod 或 iPhone 而设计，并经开发人员认证，符合 Apple 性能标准。Apple 对该设备的操作及其是否符合安全和法规标准不负任何责任。请注意，通过 iPod 或 iPhone 使用该附件可能影响无线性能。

iPod 和 iPhone 是 Apple Inc. 在美国 和其它国家/地区注册的商标。

本装置包括此标签：



II 类设备符号：



此符号表示本产品具有双层绝缘系统。

## 注

- 铭牌（铭牌上的信息包括工作电压和消耗功率）位于主机背面，使用前请先了解铭牌上的相关信息。

## 规格

额定输出功率	2 × 2 W RMS
光盘直径	12 厘米/8 厘米
支持的光盘	CD-DA, CD-R, CD-RW
调谐范围	FM: 87.5-108 兆赫
调谐栅	50 千赫
iPod/iPhone 充电	5 伏, 1 安
交流电源	220-240 伏, 50/60 赫兹
操作功耗	14 瓦
待机功耗	< 0.5 瓦
尺寸:	
- 主装置 (宽 × 高 × 厚)	152 × 174 × 236 毫米
- 音箱 (宽 × 高 × 厚)	132 × 175 × 158 毫米
重量:	
- 主装置	1.1 千克
- 音箱	2 × 0.9 千克