

# Always there to help you

Register your product and get support at  
[www.philips.com/welcome](http://www.philips.com/welcome)



OS685



## User Manual

# PHILIPS

# Contents

---

<b>1</b>	<b>Important</b>	<b>3</b>
----------	------------------	----------

---

<b>2</b>	<b>Your CD Soundmachine</b>	<b>4</b>
	Introduction	4
	What's in the box	4
	Overview of the main unit	5

---

<b>3</b>	<b>Get started</b>	<b>6</b>
	Connect power	6
	Turn on	7
	Turn off	7
	Adjust display brightness	7

---

<b>4</b>	<b>Play</b>	<b>7</b>
	Play CD	7
	Play from USB devices	7
	Play from an external audio device	8

---

<b>5</b>	<b>Play options</b>	<b>8</b>
	Control play	8
	Program tracks	8
	Adjust volume	9
	Enhance bass	9

---

<b>6</b>	<b>Listen to FM radio</b>	<b>9</b>
	Tune to FM radio stations	9
	Store radio stations automatically	9
	Store radio stations manually	9
	Select a preset radio station	10

---

<b>7</b>	<b>Product information</b>	<b>10</b>
	Specifications	10
	Supported MP3 disc formats	11
	USB playability information	11
	Maintenance	11

---

<b>8</b>	<b>Troubleshooting</b>	<b>12</b>
----------	------------------------	-----------

---

<b>9</b>	<b>Notice</b>	<b>13</b>
----------	---------------	-----------

# 1 Important

- Read these instructions.
- Follow all instructions.
- Do not block any ventilation openings. Install in accordance with the manufacturer's instructions.
- Do not install near any heat sources such as radiators, heat registers, stoves, or other apparatus (including amplifiers) that produce heat.
- Protect the power cord from being walked on or pinched, particularly at plugs, convenience receptacles, and the point where they exit from the unit.
- Only use attachments or accessories specified by the manufacturer.
- Unplug this unit during lightning storms or when unused for long periods of time.
- Refer all servicing to qualified service personnel. Servicing is required when the unit has been damaged in any way.
- Battery usage CAUTION – To prevent battery leakage which may result in bodily injury, property damage, or damage to the unit:
  - Install all batteries correctly, + and - as marked on the unit.
  - Do not mix batteries (old and new or carbon and alkaline, etc.).
  - Remove batteries when the unit is not used for a long time.
- Batteries (battery pack or batteries installed) shall not be exposed to excessive heat such as sunshine, fire or the like.
- Tropical condition has been considered and complied.
- The unit shall not be exposed to dripping or splashing.
- Do not place any sources of danger on the unit (e.g. liquid filled objects, lighted candles).
- Where the MAINS plug or an appliance coupler is used as the disconnect device,

the disconnect device shall remain readily operable.



## Warning

- Never remove the casing of this unit.
- Never place this unit on other electrical equipment.
- Never look into the laser beam inside this unit.

---

## Mains fuse

This information applies only to products with a UK mains plug.

This product is fitted with an approved molded plug. If you replace the fuse, use one with:

- the ratings shown on the plug,
- a BS 1362 approval, and
- the ASTA approval mark.

Contact your dealer if you are not sure about what type of fuse to use.

Caution: To conform with the EMC directive (2004/108/EC), do not detach the plug from the power cord.

## 2 Your CD Soundmachine

---

### Introduction

With this CD Soundmachine, you can:

- listen to FM radio; and
- enjoy audio from discs, USB device, and other external audio devices.

The CD Soundmachine offers you Dynamic Bass Boost (DBB) to enrich sound.

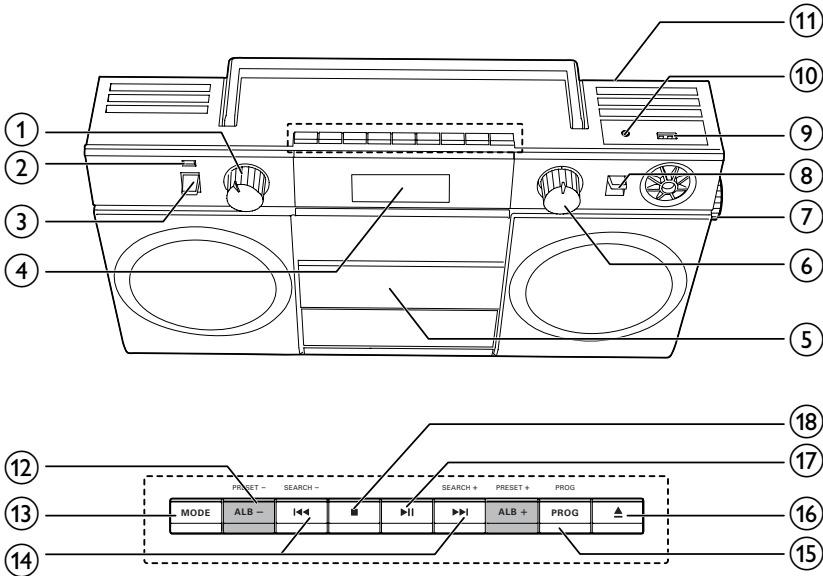
---

### What's in the box

Check and identify the contents of the package:

- Main unit
- AC power cord
- Short user manual

## Overview of the main unit



- ① **Source selector**
  - Select a source: **CD**, **FM**, or **USB**.
- ② **LED indicator**
- ③ **POWER**
  - Turn the CD Soundmachine on or off.
- ④ **Display panel**
- ⑤ **Disc tray**
- ⑥ **VOLUME**
  - Adjust volume.
- ⑦ **-TUNING +**
  - Tune to FM radio stations manually.
- ⑧ **DBB**
  - Turn dynamic bass enhancement on or off.
- ⑨ **USB**
  - Connect a USB device.
- ⑩ **AUDIO IN**
  - Connect an external audio device.
- ⑪ **FM antenna**
  - Improve FM radio reception.
- ⑫ **ALB/PRESET +/-**
  - Select a preset radio station.
  - Skip to the previous or next album.
  - Adjust display brightness.
- ⑬ **MODE**
  - Select a repeat or shuffle mode.
  - Activate brightness adjustment.
- ⑭ **<< / >> SEARCH +/-**
  - Skip to the previous or next track.
  - Tune to FM radio stations automatically.
  - Search within a track.
- ⑮ **PROG**
  - Program the play sequence of tracks.
  - Program FM radio stations.
- ⑯ **▲**
  - Open the disc tray.
- ⑰ **▶▶**
  - Start or pause play.
- ⑱ **■**
  - Stop play.
  - Erase a program.

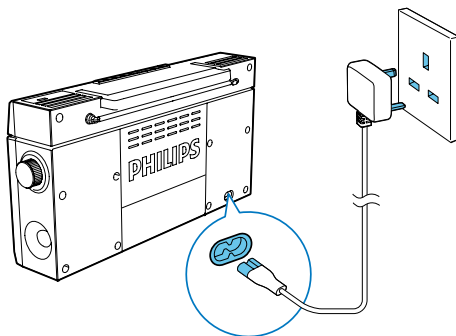
# 3 Get started



## Caution

- Use of controls or adjustments or performance of procedures other than herein may result in hazardous radiation exposure or other unsafe operation.

Always follow the instructions in this chapter in sequence.



## Connect power

The CD Soundmachine can be powered by either AC power or batteries.

### Option 1: AC power



## Warning

- Risk of product damage! Make sure that the power supply voltage corresponds to the voltage printed on the back or the underside of the CD Soundmachine.
- Risk of electric shock! When you disconnect the AC power, always pull the plug from the socket. Never pull the cord.

Connect the AC power cord to:

- the **AC~ MAINS** socket on the back of the CD Soundmachine.
- the wall outlet.



## Tip

- To save energy, turn off the CD Soundmachine after use.

### Option 2: Battery power



## Caution

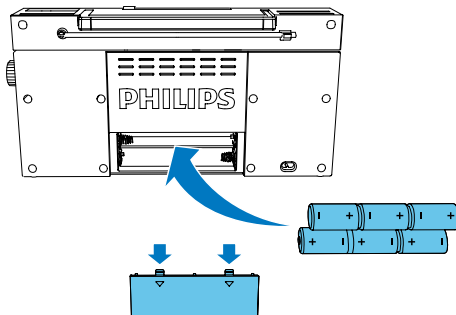
- Batteries contain chemical substances, so they should be disposed of properly.



## Note

- Batteries are not supplied with the accessories.

- 1 Open the battery compartment.
- 2 Insert 6 batteries (type: R14/UM2/C CELL) with correct polarity (+/-) as indicated.
- 3 Close the battery compartment.

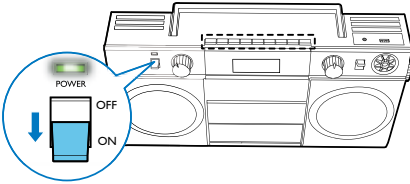


---

## Turn on

Switch the **POWER** slide to **ON** position.

- ↳ The CD Soundmachine switches to the last selected source.
- ↳ The LED indicator turns on.



### Note

- In CD or USB mode, if the CD Soundmachine is idle for 15 minutes, it switches to standby mode automatically. To exit the standby mode, press ►||.

---

## Turn off

Switch the **POWER** slide to **OFF** position.

- ↳ The LED indicator turns off.

---

## Adjust display brightness

- 1 Press and hold **MODE** for 3 seconds.
- 2 Press **ALB/PRESET** **-/+** repeatedly to adjust the display brightness.

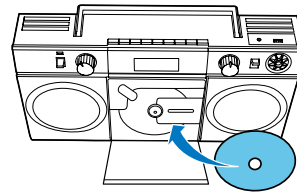
---

# 4 Play

---

## Play CD

- 1 Rotate the source selector to the **CD** position.
- 2 Press **▲** to open the disc tray.
- 3 Insert a disc with the printed side facing upward, then close the disc tray.
  - ↳ Play starts automatically.

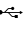


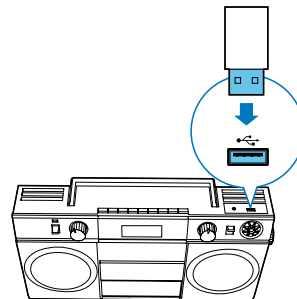
---

## Play from USB devices

### Note

- Make sure that your USB device contains playable audio content.

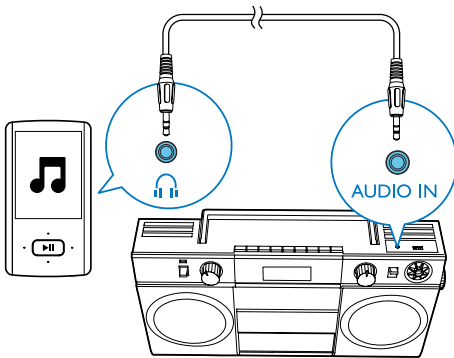
- 1 Rotate the source selector to the **USB** position.
- 2 Insert the USB device into the  socket.
  - ↳ Play starts automatically. If not, press ►||.



## Play from an external audio device

You can also listen to an external audio device such as an MP3 player through this CD Soundmachine.

- 1 Connect an audio cable (3.5mm, not supplied) to:
  - the **AUDIO IN** socket on the CD Soundmachine.
  - the headphone socket on an external device.↳ The CD soundmachine switches to Audio-in mode automatically.



- 2 Play the external device (see the user manual of the device).

## 5 Play options

### Control play

In CD or USB mode, you can control play through the following operations.

⏮ / ⏭	Select an audio file; Press and hold to fast-forward or fast-reverse the track during playback, then release to resume play.
ALB-/ALB+	Skip to the previous or next MP3/WMA album.
▶	Start or pause play.
■	Stop play.
MODE	[🔄]: Play the current track repeatedly. [🔄ALB]: Play the current album repeatedly. [🔄ALL]: Play all tracks repeatedly. [🔀]: Play tracks randomly. To return to normal play, press <b>MODE</b> repeatedly until the repeat or shuffle icons disappear.

### Program tracks

In CD or USB mode, you can program the play sequence of tracks. A maximum of 20 tracks can be programmed.

- 1 Press ■ to stop playback.
- 2 Press **PROG** to activate the programming mode.
  - ↳ [PROG] is displayed and [P01] begins to blink.
- 3 For MP3/WMA tracks, press **ALB -/ALB +** to select an album.

- 4 Press **◀◀ / ▶▶** to select a track number, then press **PROG** to confirm.
- 5 Repeat steps 3-4 to program more tracks.
- 6 Press **▶▶** to play the programmed tracks.
  - ↳ During play, **[PROG]** (program) is displayed.
    - To erase the program, press **■** twice.

---

## Adjust volume

Rotate the **VOLUME** knob to adjust volume.

---

## Enhance bass

To turn dynamic bass boost on or off, switch the **DBB** slide to **ON** or **OFF**.

# 6 Listen to FM radio

---

## Tune to FM radio stations

### Note

- For better reception, fully extend and adjust the position of the FM antenna.

- 1 Rotate the source selector to the **FM** position.
- 2 Press **SEARCH +/-**.
  - ↳ The CD Soundmachine tunes to a station with strong reception automatically.
- 3 Repeat step 2 to tune to more stations.

### To tune to a radio station manually:

Rotate the tuning knob slowly.

---

## Store radio stations automatically

In tuner mode, press and hold **PROG** for 2 seconds.

- ↳ The CD Soundmachine stores all the available FM radio stations.
- ↳ The first stored radio station is broadcast automatically.

---

## Store radio stations manually

### Note

- You can program a maximum of 20 FM radio stations.

- 1 Tune to an FM radio station.
- 2 Press **PROG** to activate the storing mode.

- 3 Press **PRESET +** or **PRESET -** to allocate a number (1 to 20) to this radio station, then press **PROG** to confirm.  
 ↳ The preset number and the frequency of the preset station are displayed.
- 4 Repeat the above steps to store other stations.

#### Note

- To remove a pre-stored FM radio station, store another station in its place.

## Select a preset radio station

In FM tuner mode, press **PRESET +** or **PRESET -** to select a preset radio station.

# 7 Product information

#### Note

- Product information is subject to change without prior notice.

## Specifications

### Amplifier

Max Output Power	Total 7 W
Frequency Response	125 -16000 Hz, -3dB
Signal to Noise Ratio	>55 dBA
Total Harmonic Distortion	<1 %
Audio-in Input	650 mV RMS

### Disc

Laser Type	Semiconductor
Disc Diameter	12cm/8cm
Support Disc	CD-DA, CD-R, CD-RW, MP3-CD, WMA-CD
Audio DAC	24Bits / 44.1kHz
Total Harmonic Distortion	<1%
Frequency Response	125 -16000 Hz, -3dB
S/N Ratio	>55 dBA

### Tuner

Tuning Range	87.5 - 108MHz
Tuning grid	50 kHz
Sensitivity	
- Mono, 26dB S/N Ratio	<22 dBf
- Stereo, 46dB S/N Ratio	<51.5 dBf
Total Harmonic Distortion	<3%
Signal to Noise Ratio	>55 dBA

## General

Power supply	220-240V~, 50/60 Hz;
- AC Power	6 x 1.5 V R14/UM2/C
- Battery	CELL
Operation Power Consumption	15 W
Standby Power Consumption	<0.5 W
Max. Loading (USB)	5 V $\Rightarrow$ 500 mA
Dimensions - Main Unit (W x H x D)	447 x 230 x 116 mm
Weight (Main Unit)	2.3 kg

## Supported MP3 disc formats

- ISO9660, Joliet
- Maximum title number: 512 (depending on file name length)
- Maximum album number: 255
- Supported sampling frequencies: 32 kHz, 44.1kHz, 48 kHz
- Supported Bit-rates: 32~256 (kbps), variable bit rates

## USB playability information

### Compatible USB devices:

- USB flash memory (USB 2.0 or USB1.1)
- USB flash players (USB 2.0 or USB1.1)
- memory cards (requires an additional card reader to work with this apparatus)

### Supported formats:

- USB or memory file format FAT12, FAT16, FAT32 (sector size: 512 bytes)
- MP3 bit rate (data rate): 32-320 Kbps and variable bit rate
- WMA v9 or earlier
- Directory nesting up to a maximum of 8 levels
- Number of albums/ folders: maximum 99
- Number of tracks/titles: maximum 999
- ID3 tag v2.0 or later

- File name in Unicode UTF8 (maximum length: 128 bytes)

### Unsupported formats:

- Empty albums: an empty album is an album that does not contain MP3/WMA files, and is not be shown in the display.
- Unsupported file formats are skipped. For example, Word documents (.doc) or MP3 files with extension .dlf are ignored and not played.
- AAC, WAV, PCM audio files
- DRM protected WMA files (.wav, .m4a, .m4p, .mp4, .aac)
- WMA files in Lossless format

## Maintenance

### Clean the cabinet

- Use a soft cloth slightly moistened with a mild detergent solution. Do not use a solution containing alcohol, spirits, ammonia or abrasives.

### Clean discs

- When a disc becomes dirty, clean it with a cleaning cloth. Wipe the disc from the centre out.



- Do not use solvents such as benzene, thinner, commercially available cleaners, or antistatic spray intended for analogue records.

### Clean the disc lens

- After prolonged use, dirt or dust may accumulate at the disc lens. To ensure good play quality, clean the disc lens with Philips CD lens cleaner or any commercially available cleaner. Follow the instructions supplied with cleaner.

# 8 Troubleshooting



## Warning

- Never remove the casing of this device.

To keep the warranty valid, never try to repair the system yourself.

If you encounter problems when using this device, check the following points before requesting service. If the problem remains unsolved, go to the Philips Web page ([www.philips.com/support](http://www.philips.com/support)). When you contact Philips, make sure that the device is nearby and the model number and serial number are available.

### No power

- Ensure that the AC power plug of the unit is connected properly.
- Ensure that there is power at the AC outlet.
- Insert the batteries with their polarities (+/- signs) aligned as indicated.
- Replace the battery.

### No sound or poor sound

- Adjust the volume.

### No response from the unit

- Disconnect and reconnect the AC power plug, then turn on the system again.
- As a power-saving feature, the unit switches off automatically 15 minutes after track play reaches the end and no control is operated.

### USB device not supported

- The USB device is incompatible with the apparatus. Try another one.

### No disc detected

- Insert a disc.
- Check if the disc is inserted upside down.
- Wait until the moisture condensation at the lens has cleared.
- Replace or clean the disc.
- Use a finalized CD or correct format disc.

### Poor radio reception

- Increase the distance between the unit and your TV or VCR.
- Fully extend the FM antenna.

## 9 Notice



This product complies with the radio interference requirements of the European Community.

Any changes or modifications made to this device that are not expressly approved by Philips Consumer Lifestyle may void the user's authority to operate the equipment.



Your product is designed and manufactured with high quality materials and components, which can be recycled and reused.



When this crossed-out wheeled bin symbol is attached to a product it means that the product is covered by the European Directive 2002/96/EC.

Please inform yourself about the local separate collection system for electrical and electronic products.

Please act according to your local rules and do not dispose of your old products with your normal household waste. Correct disposal of your old product helps to prevent potential negative consequences for the environment and human health.



Your product contains batteries covered by the European Directive 2006/66/EC, which cannot be disposed with normal household waste. Please inform yourself about the local rules on separate collection of batteries

because correct disposal helps to prevent negative consequences for the environmental and human health.

### Environmental information

All unnecessary packaging has been omitted. We have tried to make the packaging easy to separate into three materials: cardboard (box), paper pulp (buffer) and polyethylene (bags, protective foam sheet.)

Your system consists of materials which can be recycled and reused if disassembled by a specialized company. Please observe the local regulations regarding the disposal of packaging materials, exhausted batteries and old equipment.

**This apparatus includes these labels:**



Class II equipment symbol



This symbol indicates that the apparatus has a double insulation system.



The USB-IF Logos are trademarks of Universal Serial Bus Implementers Forum, Inc.



Windows Media and the Windows logo are trademarks, or registered trademarks of Microsoft Corporation in the United States and/or other countries.



Note

- The type plate is located on the bottom of the apparatus.



Specifications are subject to change without notice  
© 2013 Koninklijke Philips Electronics N.V.  
All rights reserved.

OS685\_05\_UM\_V1.0

