

Always there to help you

Register your product and get support at
www.philips.com/welcome

DCM1170



User manual

PHILIPS

Contents

| | |
|--------------------|---|
| 1 Important | 2 |
| Safety | 2 |

| | |
|--------------------------------|---|
| 2 Your micro system | 3 |
| Introduction | 3 |
| What's in the box | 3 |
| Overview of the main unit | 4 |
| Overview of the remote control | 5 |

| | |
|----------------------------|---|
| 3 Get started | 6 |
| Connect speakers | 6 |
| Connect power | 7 |
| Demonstrate the features | 7 |
| Prepare the remote control | 7 |
| Set clock | 7 |
| Turn on | 7 |

| | |
|-----------------------|----|
| 4 Play | 8 |
| Play from disc | 8 |
| Play from USB | 8 |
| Play from iPod/iPhone | 9 |
| Control play | 9 |
| Skip to a track | 10 |
| Program tracks | 10 |

| | |
|--------------------------------------|----|
| 5 Listen to the radio | 10 |
| Tune to a radio station | 10 |
| Program radio stations automatically | 10 |
| Program radio stations manually | 11 |
| Select a preset radio station | 11 |

| | |
|------------------------------|----|
| 6 Other features | 11 |
| Set the alarm timer | 11 |
| Set the sleep timer | 12 |
| Listen to an external device | 12 |

| | |
|------------------------------|----|
| 7 Product information | 12 |
| Specifications | 12 |
| USB playability information | 13 |
| Supported MP3 disc formats | 13 |

| | |
|--------------------------|----|
| 8 Troubleshooting | 14 |
|--------------------------|----|

| | |
|-----------------|----|
| 9 Notice | 15 |
|-----------------|----|

1 Important

Safety



This 'bolt of lightning' indicates uninsulated material within the device may cause an electrical shock. For the safety of everyone in your household, please do not remove the covering.

The 'exclamation mark' calls attention to features for which you should read the enclosed literature closely to prevent operating and maintenance problems.

WARNING: To reduce the risk of fire or electric shock, the device should not be exposed to rain or moisture and objects filled with liquids, such as vases, should not be placed on the device.

CAUTION: To prevent electric shock, fully insert the plug. (For regions with polarized plugs: To prevent electric shock, match wide blade to wide slot.)

Important Safety Instructions

- Follow all instructions.
- Heed all warnings.
- Do not use this device near water.
- Clean only with dry cloth.
- Do not block any ventilation openings. Install in accordance with the manufacturer's instructions.
- Do not install near any heat sources such as radiators, heat registers, stoves, or other devices (including amplifiers) that produce heat.
- Protect the power cord from being walked on or pinched, particularly at plugs,

convenience receptacles, and the point where they exit from the device.

- Only use attachments/accessories specified by the manufacturer:
- Use only with the cart, stand, tripod, bracket, or table specified by the manufacturer or sold with the device. When a cart is used, use caution when moving the cart/device combination to avoid injury from tip-over.



- Unplug this device during lightning storms or when unused for long periods of time.
- Refer all servicing to qualified service personnel. Servicing is required when the device has been damaged in any way, such as power-supply cord or plug is damaged, liquid has been spilled or objects have fallen into the device, the device has been exposed to rain or moisture, does not operate normally, or has been dropped.
- Battery usage **CAUTION** – To prevent battery leakage which may result in bodily injury, property damage, or damage to the unit:
 - Install all batteries correctly, + and - as marked on the unit.
 - Do not mix batteries (old and new or carbon and alkaline, etc.).
 - Batteries (packed or installed) shall not be exposed to excessive heat such as sunshine, fire or the like.
 - Remove batteries when the unit is not used for a long time.
- The device shall not be exposed to dripping or splashing.
- Do not place any sources of danger on the device (e.g. liquid filled objects, lighted candles).

- Where the MAINS plug or an appliance coupler is used as the disconnect device, the disconnect device shall remain readily operable.

Warning

- Never remove the casing of this device.
- Never lubricate any part of this device.
- Never place this device on other electrical equipment.
- Keep this device away from direct sunlight, naked flames or heat.
- Never look into the laser beam inside this device.
- Ensure that you always have easy access to the power cord, plug, or adaptor to disconnect this device from the power.

2 Your micro system

Congratulations on your purchase, and welcome to Philips! To fully benefit from the support that Philips offers, register your product at www.philips.com/welcome.

Introduction

With this unit, you can:

- enjoy audio from discs, USB storage devices, iPod/iPhone, and other external devices;
- listen to radio stations.

You can enrich sound output with below sound effect:

- Digital Sound Control (DSC)
 - DSC 1: Balanced
 - DSC 2: Clear
 - DSC 3: Powerful
 - DSC 4: Warm
 - DSC 5: Bright

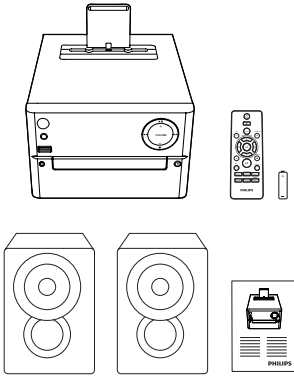
The unit supports these media formats:



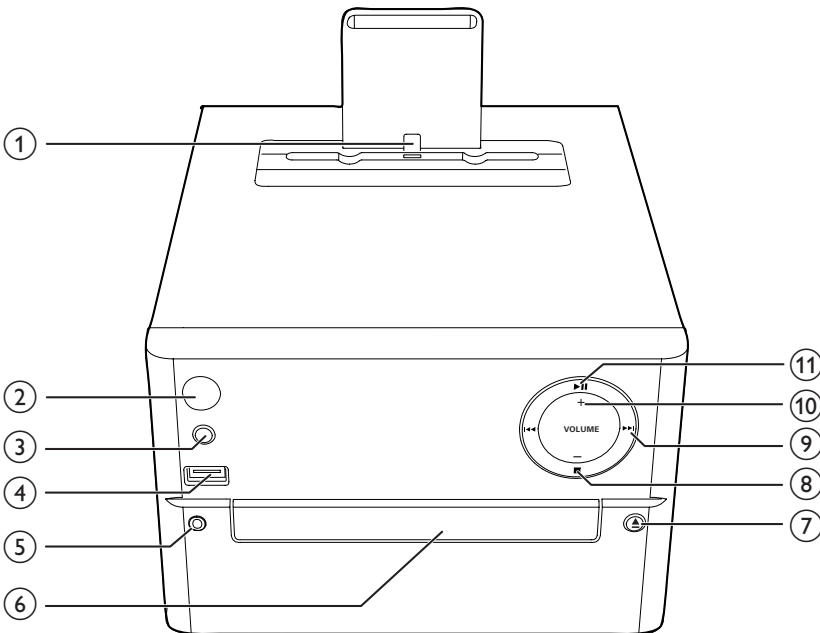
What's in the box

Check and identify the contents of your package:

- Main unit
- 2 x speakers
- Remote control (with one AAA battery)
- Short user manual



Overview of the main unit



① Dock for iPod/iPhone

② 

- Turn the unit on or off.
- Switch to standby mode or Eco standby mode.

③ SOURCE

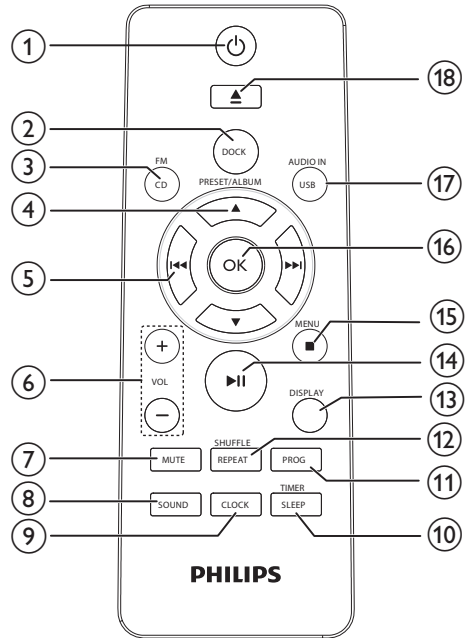
- Select a source: CD, USB, FM, AUDIO IN.

④ 

- Jack for a USB device.

- ⑤ **AUDIO IN**
 - Audio input jack (3.5mm) for an external audio device.
- ⑥ **Disc compartment**
- ⑦ ▲
 - Open/close the disc compartment.
- ⑧ ■
 - Stop play or erase a program.
- ⑨ ◀▶
 - Skip to the previous/next track.
 - Search within a track/disc/USB.
 - Tune to a radio station.
 - Adjust time.
- ⑩ **VOLUME +/-**
 - Adjust volume.
- ⑪ ▶||
 - Start, pause, or resume play.

Overview of the remote control



- ① **⏻**
 - Turn the unit on or off.
 - switch to standby mode or Eco power standby mode.
- ② **DOCK**
 - Select **DOCK** source.
- ③ **CD/FM**
 - Select **CD/FM** source.
- ④ **PRESET/ALBUM ▲ / ▼**
 - Select a preset radio station.
 - Skip to previous/next album.
- ⑤ **◀▶**
 - Skip to the previous/next track.
 - Search within a track/disc/USB.
 - Tune to a radio station.
 - Adjust time.

- ⑥ **VOL +/-**
 - Adjust volume.
- ⑦ **MUTE**
 - Mute or restore volume.
- ⑧ **SOUND**
 - Enrich sound effect with Digital Sound Control (DSC).
- ⑨ **CLOCK**
 - Set the clock.
 - View clock information.
- ⑩ **SLEEP/TIMER**
 - Set sleep timer.
 - Set alarm timer.
- ⑪ **PROG**
 - Program tracks.
 - Program radio stations.
 - Auto store FM radio stations.
- ⑫ **SHUFFLE/REPEAT**
 - Play tracks repeatedly or randomly.
- ⑬ **DISPLAY**
 - Adjust display brightness.
- ⑭ **▶||**
 - Start, pause, or resume play.
- ⑮ **MENU/■**
 - Access iPod/iPhone menu.
 - Stop play or erase a program.
- ⑯ **OK**
 - Confirm a selection.
- ⑰ **USB/AUDIO IN**
 - Select USB or AUDIO IN source.
- ⑱ **▲**
 - Press to open or close the disc compartment.

3 Get started



Caution

- Use of controls or adjustments or performance of procedures other than herein may result in hazardous radiation exposure or other unsafe operation.

Always follow the instructions in this chapter in sequence.

If you contact consumer care, you will be asked for the model and serial number of this apparatus. The model number and serial number are on the back of the apparatus. Write the numbers here:

Model No. _____

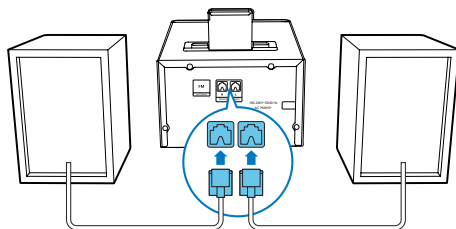
Serial No. _____

Connect speakers



Note

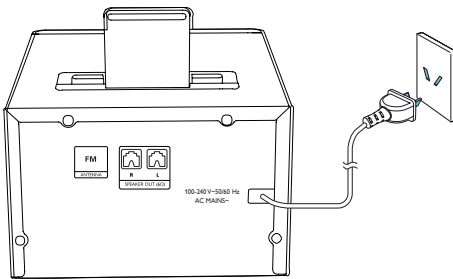
- For optimal sound, use the supplied speakers only.
- Connect only speakers with impedance that is the same or higher than the supplied speakers. Refer to the Specifications section of this manual.



Connect power

! Caution

- Risk of product damage! Ensure that the power supply voltage corresponds to the voltage printed on the back or the underside of the unit.
- Risk of electric shock! When you unplug the AC power cord, always pull the plug from the socket. Never pull the cord.
- Before you connect the AC power cord, ensure that you have completed all other connections.



Demonstrate the features

In the standby mode, you can demonstrate features by pressing **■**.

- ↳ The features are displayed one by one across the display panel.
- To turn off the demonstration, press **■** again.

Prepare the remote control

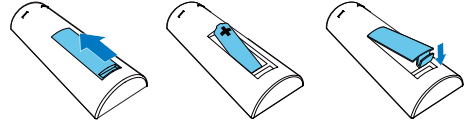
! Caution

- Risk of explosion! Keep batteries away from heat, sunshine or fire. Never discard batteries in fire.
- Risk of decreased battery life! Never mix different brands or types of batteries.
- Risk of product damage! When the remote control is not used for long periods, remove the batteries.

To insert the remote control battery:

- 1 Open the battery compartment.

- 2 Insert the supplied AAA battery with correct polarity (+/-) as indicated.
- 3 Close the battery compartment.



Set clock

- 1 In standby mode, press and hold **CLOCK** on the remote control for more than two seconds.
↳ [24H] or [12H] hour format is displayed.
- 2 Press **◀◀** / **▶▶** to select [24H] or [12H] hour format, and then press **CLOCK**.
↳ The hour digits are displayed and begin to blink.
- 3 Press **◀◀** / **▶▶** to set hour; and then press **CLOCK**.
↳ The minute digits are displayed and begin to blink.
- 4 Repeat step 3 to set minute.

≡ Note

- If no button is pressed in 90 seconds, the system exits clock setting mode automatically.

* Tip

- You can view clock information in power-on mode by pressing **CLOCK**.

Turn on

Press **⏻**.

- ↳ The unit switches to the last selected source.

Switch to standby mode

Press \odot again to switch the unit to standby mode.

↳ The clock (if set) is displayed on the panel.

Switch to ECO standby mode:

Press and hold \odot for more than two seconds.

↳ The display panel is dimmed.

Note

- The unit switches to Eco Power Standby mode after 15 minutes in standby mode.

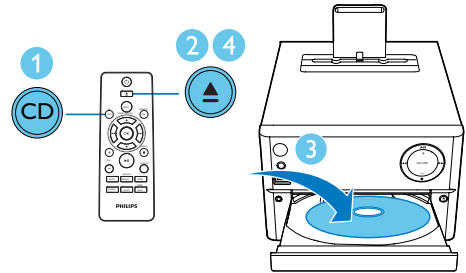
Switch between standby mode and ECO standby mode:

Press and hold \odot for more than two seconds.

4 Play

Play from disc

- 1 Press **CD/FM** repeatedly to select **CD** source.
- 2 Press \blacktriangle to open the disc compartment.
- 3 Insert a disc with the printed side facing upward.
- 4 Press \blacktriangle to close the disc compartment.
↳ Play starts automatically. If not, press **▶||**.

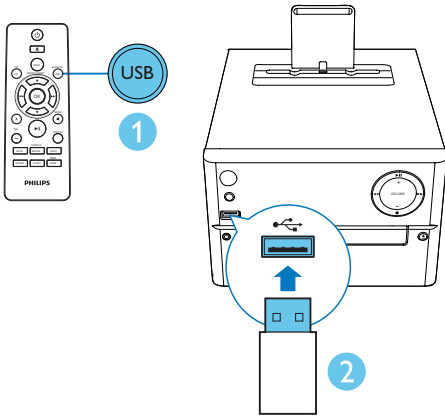


Play from USB

Note

- Make sure that the USB device contains playable audio content.

- 1 Press **USB/AUDIO IN** repeatedly to select the USB source.
- 2 Insert a USB device into the USB socket.
↳ Play starts automatically. If not, press **▶||**.



Play from iPod/iPhone

When the iPod/iPhone is docked on this Micro System, you can listen to music from the speakers.

Compatible iPod/iPhone

The docking speaker supports the following iPod/iPhone models.

Made for:

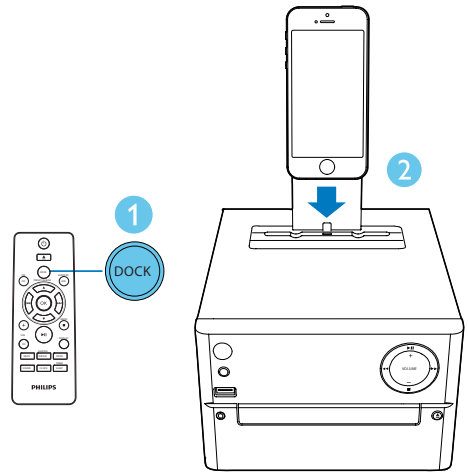
- iPhone 5
- iPod nano (7th generation)
- iPod touch (5th generation)

Play an iPod/iPhone

Note

- When an iPod/iPhone player is loaded, the unit switches to iPod source automatically.

- 1 Press **DOCK** to select **DOCK** source.
- 2 Place your iPod/iPhone in the dock.
 - ↳ The connected iPod/iPhone plays automatically.



Charge the iPod/iPhone

The docked iPod/iPhone begins to charge automatically after connected to power.

Control play

| | |
|---------|--|
| ▲ / ▼ | Select a folder. |
| ◀◀ / ▶▶ | Select an audio file. |
| ▶ | Pause or resume play. |
| ■ | Stop play. |
| MENU | Access iPod/iPhone menu. |
| OK | Confirm a selection. |
| REPEAT | Play a track or all tracks repeatedly. |
| SHUFFLE | Play tracks randomly. |
| VOL +/- | Increase or decrease the volume. |
| MUTE | Mute or restore sound. |
| SOUND | Enrich sound effect with DSC: balanced, clear, powerful, warm, and bright. |
| DISPLAY | Adjust display brightness. |

Skip to a track

For CD:

Press **⏮** / **⏭** to select another track.

For MP3 disc and USB:

- 1 Press **▲** / **▼** to select an album or a folder.
- 2 Press **⏮** / **⏭** to select a track or a file.

Program tracks

You can program a maximum of 20 tracks.

- 1 Press **PROG** to activate the program mode.
- 2 For MP3 tracks, press **▲** / **▼** to select an album.
- 3 Press **⏮** / **⏭** to select a track, and then press **PROG** to confirm.
- 4 Repeat steps 2 to 3 to program more tracks.
- 5 Press **▶||** to play the programmed tracks.
 - ↳ During play, **[PROG]** (program) is displayed.
 - To erase the program, in the stop position, press **■**.

5 Listen to the radio

Tune to a radio station



Tip

- Position the antenna as far as possible from TV, VCR, or other radiation source.
- For optimal reception, fully extend and adjust the position of the antenna.

- 1 Press **CD/FM** repeatedly to select **FM** source.
- 2 Press and hold **⏮** / **⏭** for more than two seconds.
 - ↳ The radio tunes to a station with strong reception automatically.
- 3 Repeat step 2 to tune to more stations.

To tune to a weak station:

Press **⏮** / **⏭** repeatedly until you find optimal reception.

Program radio stations automatically



Note

- You can program a maximum of 20 preset radio stations (FM).

In tuner mode, press and hold **PROG** for more than two seconds to activate automatic programming.

- ↳ All available stations are programmed in the order of waveband reception strength.
- ↳ The first programmed radio station is broadcast automatically.

Program radio stations manually

- 1 Tune to a radio station.
- 2 Press **PROG**, and then press ▲ / ▼ to select a number from 1–20.
- 3 Press **PROG** to confirm.
↳ The preset number and the frequency of the preset station are displayed.
- 4 Repeat steps 2-3 to program more stations.

Note

- To overwrite a programmed station, store another station in its place.

Select a preset radio station

In tuner mode, press ▲ / ▼ to select a preset number.

6 Other features

Set the alarm timer

This unit can be used as an alarm clock. You can select CD, FM, USB, or iPod/iPhone as alarm source.

Note

- Make sure that you have set the clock correctly.

- 1 In standby mode, press and hold **SLEEP/TIMER** for more than two seconds.
↳ The hour digits are displayed and begin to blink.
- 2 Press **◀◀ / ▶▶** repeatedly to set hour, and then press **SLEEP/TIMER**.
↳ The minute digits are displayed and begin to blink.
- 3 Repeat step 2 to set minute, select a source (**CD, FM, USB, or iPod/iPhone**), and adjust volume.

Note

- If no button is pressed in 90 seconds, the system exits timer setting mode automatically.

To activate or deactivate the alarm timer:

Press **SLEEP/TIMER** repeatedly to activate or deactivate the alarm.

↳ If timer is activated,  is displayed.

Tip

- If CD/USB/iPod/iPhone source is selected, but no disc is placed or no USB/iPod/iPhone connected, the system switches to the tuner source automatically.

Set the sleep timer

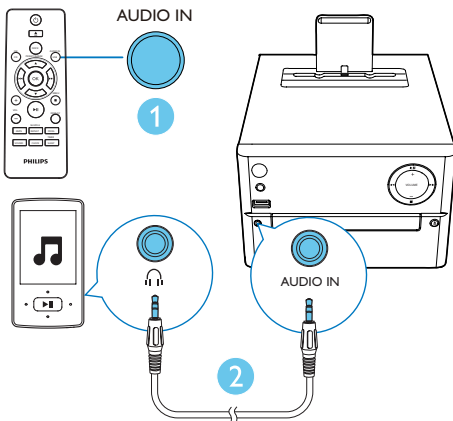
To set the sleep timer, in turn on mode, press **SLEEP/TIMER** repeatedly to select a set period of time (in minutes).

- ↳ When sleep timer is activated, **zZ** is displayed. Otherwise, **zZ** disappears.

Listen to an external device

You can listen to an external device through this unit with an MP3 link cable (not supplied).

- 1 Press **USB/AUDIO IN** repeatedly to select **AUDIO IN** source.
- 2 Connect an MP3 link cable (not supplied) between:
 - **AUDIO IN** jack (3.5 mm) on the unit,
 - and the headphone jack on an external device.
- 3 Start to play the device (see the device user manual).



7 Product information

Note

- Product information is subject to change without prior notice.

Specifications

Amplifier

| | |
|---------------------------|--------------------------|
| Maximum Output Power | 20 W |
| Frequency Response | 60 Hz - 16 kHz; ±3 dB |
| Signal to Noise Ratio | >70 dBA |
| Total Harmonic Distortion | <1% |
| Aux Input | 600 mV RMS |

Speakers

| | |
|-------------------|-------------|
| Speaker Impedance | 6 ohm |
| Speaker Driver | 3.5" woofer |
| Sensitivity | >84 dB/m/W |

Tuner (FM)

| | |
|---------------------------|--------------|
| Tuning Range | 87.5-108 MHz |
| Tuning grid | 50 KHz |
| Sensitivity | |
| - Mono, 26dB S/N Ratio | <22 dBf |
| - Stereo, 46dB S/N Ratio | <51 dBf |
| Search Selectivity | <30 dBf |
| Total Harmonic Distortion | <3% |
| Signal to Noise Ratio | >45 dBA |

USB

| | |
|--------------------|----------------|
| USB Direct Version | 2.0 full speed |
| USB 5 V Power | ≤500 mA |

Disc

| | |
|---------------------------|-------------------------------|
| Laser Type | Semiconductor |
| Disc Diameter | 12 cm/8 cm |
| Support Disc | CD-DA, CD-R, CD-RW, MP3-CD |
| Audio DAC | 24 Bits/44.1 kHz |
| Total Harmonic Distortion | <1% (1 kHz) |
| Frequency Response | 60 Hz - 16 kHz; ±3 dB |
| S/N Ratio | >70 dBA |

General information

| | |
|-------------------------------|----------------------|
| AC power | 100-240 V~, 50/60 Hz |
| Operation Power Consumption | 18 W |
| Eco Standby Power Consumption | <0.5 W |
| Dimensions | |
| - Main Unit (W × H × D) | 180 × 177 × 239 mm |
| - Speaker Box (W × H × D) | 120 × 170 × 160 mm |
| Weight | |
| - Main Unit | 1.5 kg |
| - Speaker Box | 2 × 1.2 kg |

USB playability information

Compatible USB devices:

- USB flash memory (USB2.0 or USB1.1)
- USB flash players (USB2.0 or USB1.1)
- memory cards (requires an additional card reader to work with this unit)

Supported formats:

- USB or memory file format: FAT12, FAT16, FAT32 (sector size: 512 bytes)
- MP3 bit rate (data rate): 32-320 Kbps and variable bit rate
- Directory nesting up to a maximum of 8 levels
- Number of albums/ folders: maximum 99
- Number of tracks/titles: maximum 999
- File name in Unicode UTF8 (maximum length: 32 bytes)

Unsupported formats:

- Empty albums: an empty album is an album that does not contain MP3/WMA files, and will not be shown in the display.
- Unsupported file formats are skipped. For example, word documents (.doc) or MP3 files with extension .dlf are ignored and not played.
- WMA, AAC, WAV, PCM audio files
- DRM protected WMA files (.wav, .m4a, .m4p, .mp4, .aac)
- WMA files in Lossless format

Supported MP3 disc formats

- ISO9660, Joliet
- Maximum title number: 128 (depending on file name length)
- Maximum album number: 99
- Supported sampling frequencies: 32 kHz, 44.1 kHz, 48 kHz
- Supported Bit-rates: 32~256 (kbps), variable bit rates

8 Troubleshooting



Warning

- Never remove the casing of this device.

To keep the warranty valid, never try to repair the system yourself.

If you encounter problems when using this device, check the following points before requesting service. If the problem remains unsolved, go to the Web page (www.philips.com/support). When you contact consumer care, make sure that the device is nearby and the model number and serial number are available.

No power

- Make sure that the AC power cord of the device is connected properly.
- Make sure that there is power at the AC outlet.
- As a power-saving feature, the system switches off automatically 15 minutes after track play reaches the end and no control is operated.

No sound or poor sound

- Adjust the volume.
- Check that the speakers are connected correctly.
- Check if the stripped speaker wires are clamped.

No response from the unit

- Disconnect and reconnect the AC power plug, then turn on the unit again.
- As a power-saving feature, the system switches off automatically 15 minutes after track play reaches the end and no control is operated.

Remote control does not work

- Before you press any function button, first select the correct source with the remote control instead of the main unit.

- Reduce the distance between the remote control and the unit.
- Insert the battery with its polarities (+/- signs) aligned as indicated.
- Replace the battery.
- Aim the remote control directly at the sensor on the front of the unit.

No disc detected

- Insert a disc.
- Check if the disc is inserted upside down.
- Wait until the moisture condensation at the lens has cleared.
- Replace or clean the disc.
- Use a finalized CD or correct format disc.

Cannot display some files in USB device

- The number of folders or files in the USB device has exceeded a certain limit. This phenomenon is not a malfunction.
- The formats of these files are not supported.

USB device not supported

- The USB device is incompatible with the unit. Try another one.

Poor radio reception

- Increase the distance between the unit and your TV or VCR.
- Fully extend the FM antenna.

Timer does not work

- Set the clock correctly.
- Switch on the timer.

Clock/timer setting erased

- Power has been interrupted or the power cord has been disconnected.
- Reset the clock/timer.

9 Notice

Any changes or modifications made to this device that are not expressly approved by WOOX Innovations may void the user's authority to operate the equipment.

Your product is designed and manufactured with high quality materials and components, which can be recycled and reused.

Never dispose of your product with other household waste. Please inform yourself about the local rules on the separate collection of electrical and electronic products and batteries. The correct disposal of these products helps prevent potentially negative consequences on the environment and human health.

Your product contains batteries, which cannot be disposed of with normal household waste. Please inform yourself about the local rules on separate collection of batteries. The correct disposal of batteries helps prevent potentially negative consequences on the environment and human health.

Please visit www.recycle.philips.com for additional information on a recycling center in your area.

Environmental information

All unnecessary packaging has been omitted. We have tried to make the packaging easy to separate into three materials: cardboard (box), polystyrene foam (buffer) and polyethylene (bags, protective foam sheet.)

Your system consists of materials which can be recycled and reused if disassembled by a specialized company. Please observe the local regulations regarding the disposal of packaging materials, exhausted batteries and old equipment.



The making of unauthorized copies of copy-protected material, including computer programs, files, broadcasts and sound

recordings, may be an infringement of copyrights and constitute a criminal offence. This equipment should not be used for such purposes.



"Made for iPod" and "Made for iPhone" mean that an electronic accessory has been designed to connect specifically to iPod or iPhone respectively, and has been certified by the developer to meet Apple performance standards. Apple is not responsible for the operation of this device or its compliance with safety and regulatory standards. Please note that the use of this accessory with iPod or iPhone may affect wireless performance. iPod and iPhone are trademarks of Apple Inc., registered in the U.S. and other countries.

This apparatus includes this label:



Note

- The type plate is located on the back of the device.

Warranty Against Defects

In this warranty:

We means WOOX Innovations Singapore Pte Ltd ARBN 165 105 975, and our contact details are set out at the end of this warranty;

You means the purchaser or the original end-user of the Goods;

Supplier means the authorised distributor or retailer of the Goods that sold you the Goods in Australia or New Zealand; and

Goods means the product or equipment which was accompanied by this warranty and purchased in Australia or New Zealand.

If you require assistance with the operation of the product, its features or specifications please call the Philips Consumer Care Centre on 1300 850 633 in Australia or 0800 639 953 in New Zealand.

Australia: If you are taken to have been supplied with our goods as a "Consumer" for the purposes of the Australian Consumer Law then : Our Goods come with guarantees that cannot be excluded under the Australian Consumer Law. You are entitled to a replacement or refund for a major failure and compensation for any other reasonably foreseeable loss or damage. You are also entitled to have the Goods repaired or replaced if the goods fail to be of acceptable quality and the failure does not amount to a major failure. This is not a complete statement of your legal rights as a consumer.

New Zealand: Our Goods come with guarantees that cannot be excluded under the Consumer Guarantees Act 1993. This guarantee applies in addition to the conditions and guarantees implied by that legislation.

Additional Warranty: In addition to the rights and remedies that you may have under the Australian Consumer Law, Consumer Guarantees Act of New Zealand or any other applicable law, we provide the following warranty against defects: **(Additional Warranty).**

1. If, during the first **12 months** from their date of purchase from the Supplier (**Warranty Period**), the Goods prove defective by reason of improper workmanship or materials and none of your statutory rights or remedies apply, we will repair or replace the Goods without charge.
2. We do not have to repair or replace the Goods under this Additional Warranty if the Goods have been used for a commercial purpose; misused, improperly or inappropriately installed, operated or repaired; abused; damaged; or not maintained in accordance with the manufacturer's instructions.
3. Even when we do not have to repair or replace the Goods, we may decide to do so anyway. In some cases, we may decide to substitute the Goods with a similar alternative product of our choosing. All such decisions are at our absolute discretion.
4. All goods that are repaired, replaced or substituted under this Additional Warranty continue to receive the benefit of this Additional Warranty for the time remaining on the original Warranty Period.
5. This Additional Warranty is limited to repair, replacement or substitution only. As far as the law permits, we will not be liable for any loss or damage caused to property or persons arising from any cause whatsoever.
6. In order to claim under this Additional Warranty you must telephone us on 1300 850 633 in Australia or 0800 639 953 in New Zealand within the Warranty Period. You will be asked for details of the Goods, a description of the defect and your personal details. Upon accepting your claim, we shall assist you with either returning the Goods to the Supplier for replacement or a Philips Authorised Service Centre in Australia or New Zealand for your Goods to be repaired. We may require that you return the Goods for repair, replacement or substitution.
 - * All returned Goods must be accompanied by satisfactory proof of purchase which clearly indicates the name and address of the Supplier, the date and place of purchase and identifies product. It is best to provide a legible and unmodified receipt or sales invoice.
 - * You must bear any expense for return of the Goods or otherwise associated with making your claim under this Additional Warranty.
7. This warranty is only valid and enforceable in Australia and New Zealand.

Contact us for further details.

In Australia contact

Consumer Care: 1300 850 633

E-mail: le.anz@philips.com

Website: www.philips.com/support

65 Epping Rd, North Ryde, NSW 2113

In New Zealand contact

Consumer Care: 0800 639 953

Email: le.anz@philips.com

Website: www.philips.com/support

© 2013 WOOX Innovations Limited. All rights reserved.

This product was brought to the market by WOOX Innovations Limited or one of its affiliates, further referred to in this document as WOOX Innovations, and is the manufacturer of the product.

WOOX Innovations is the warrantor in relation to the product with which this booklet was packaged. Philips and the Philips Shield Emblem are registered trademarks of Koninklijke Philips N.V."



2014 © WOOX Innovations Limited.

All rights reserved.

Philips and the Philips' Shield Emblem are registered trademarks of Koninklijke Philips N.V. and are used by WOOX Innovations Limited under license from Koninklijke Philips N.V.

DCM1170_93_UM_V3.0

