

# Always there to help you

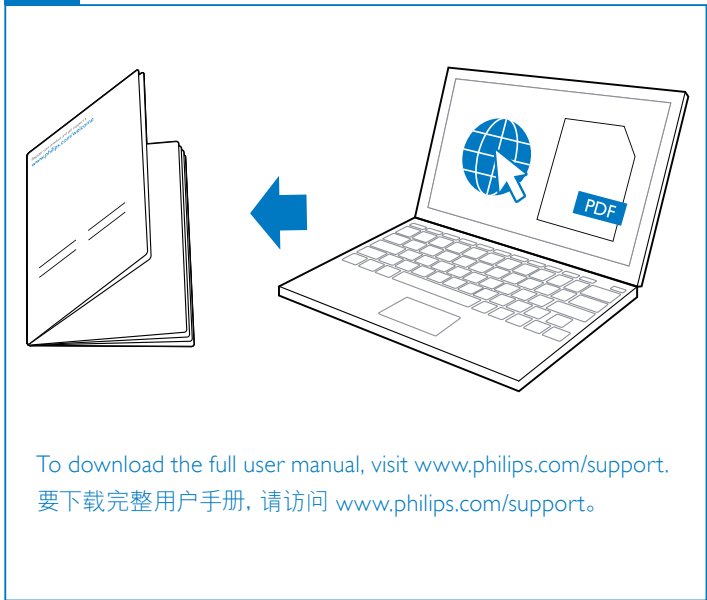
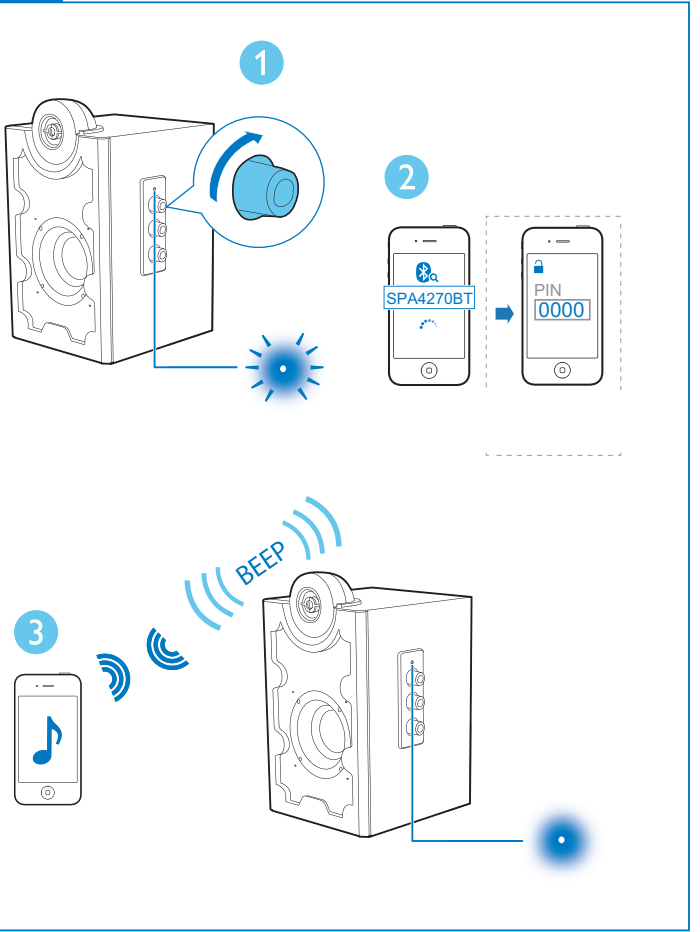
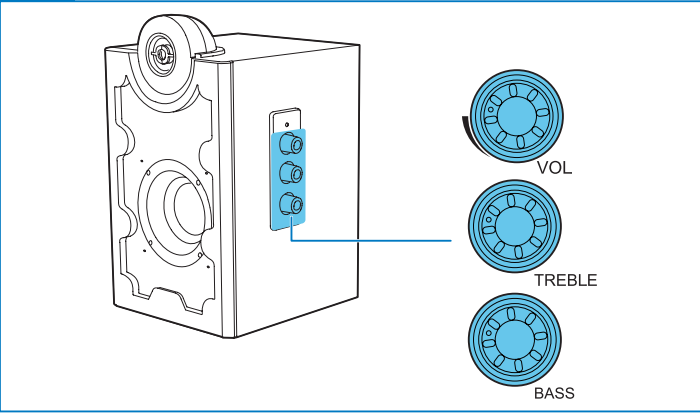
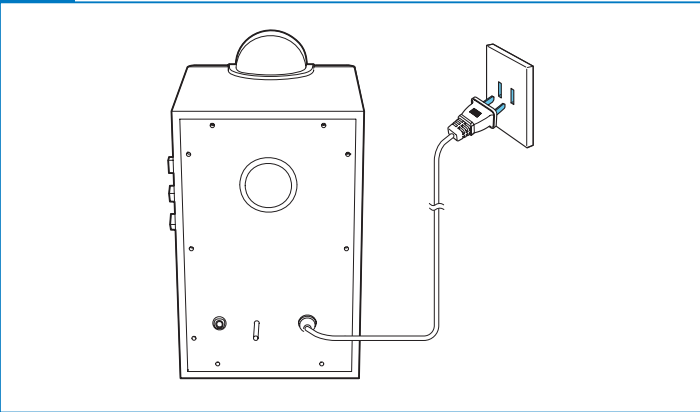
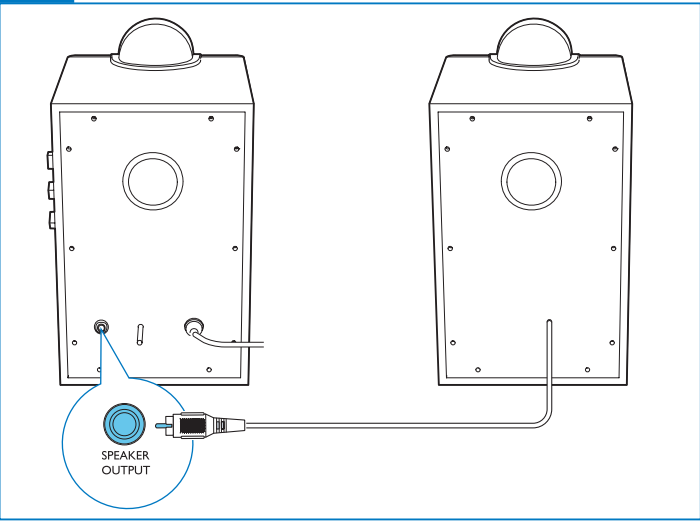
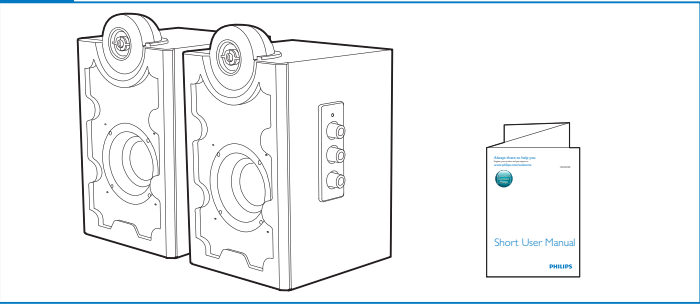
Register your product and get support at [www.philips.com/welcome](http://www.philips.com/welcome)

Question?  
Contact  
Philips

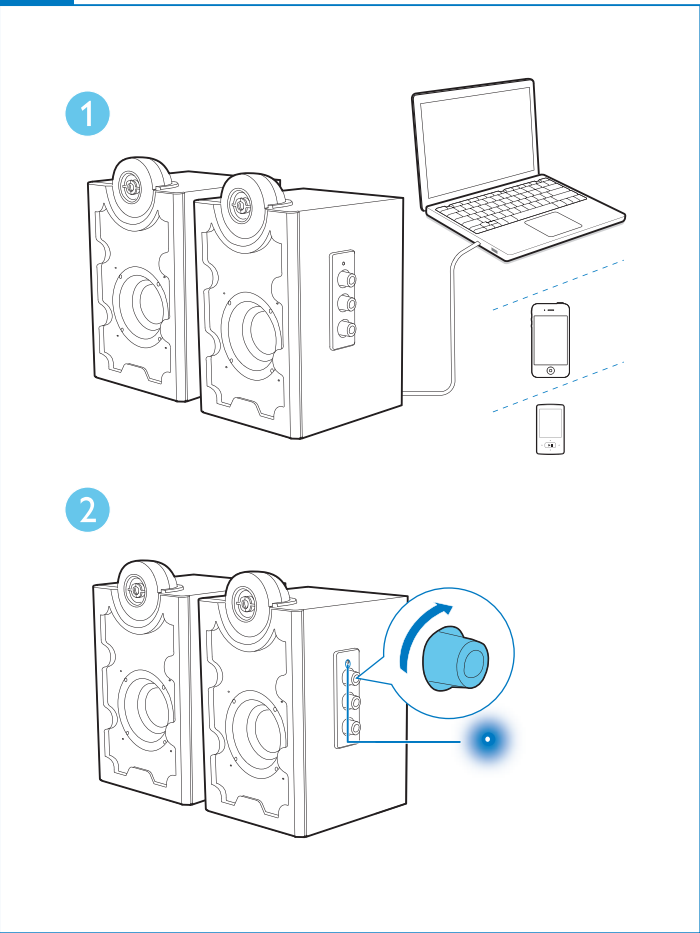
SPA4270BT

EN User Manual  
ZH-CN 用户手册

PHILIPS



To download the full user manual, visit [www.philips.com/support](http://www.philips.com/support).  
要下载完整用户手册, 请访问 [www.philips.com/support](http://www.philips.com/support).



EN

## 1 Important

### Safety

#### Important safety instructions

- Read and follow all these instructions.
- The product shall not be exposed to dripping or splashing and no objects filled with liquids, such as vases, shall be placed on the product.
- To completely disconnect the power input, the mains plug of the product shall be disconnected from the mains.
- The mains plug of the product should not be obstructed or should be easily accessed during intended use.
- Keep this product away from direct sunlight, naked flames or other heat sources.
- Unplug the product from the power outlet during lightening storms or when unused for long periods of time.
- When you disconnect the power cord, always pull the plug instead of the cable.
- Only use attachments/accessories specified by the manufacturer.
- Where the mains plug or an appliance coupler is used as the disconnect device, the disconnect device shall remain readily operable.



#### Warning

- Never remove the casing of this unit.
- Never lubricate any part of this unit.
- Place this unit on a flat, hard and stable surface.
- Never place this unit on other electrical equipment.
- Keep this unit away from water, moisture and liquid-filled objects.
- Keep this unit away from direct sunlight, naked flames or heat.

### Notice

Any changes or modifications made to this device that are not expressly approved by Philips Consumer Lifestyle may void the user's authority to operate the equipment.

#### Disposal of your old product and batteries

Your product is designed and manufactured with high quality materials and components, which can be recycled and reused. Never dispose of your product with other household waste. Please inform yourself about the local rules on the separate collection of electrical and electronic products and batteries. The correct disposal of these products helps prevent potentially negative consequences on the environment and human health. Your product contains batteries, which cannot be disposed of with normal household waste. Please inform yourself about the local rules on separate collection of batteries. The correct disposal of batteries helps prevent potentially negative consequences on the environment and human health. Please visit [www.recycle.philips.com](http://www.recycle.philips.com) for additional information on a recycling center in your area.

#### Environmental information

All unnecessary packaging has been omitted. We have tried to make the packaging easy to separate into three materials: cardboard (box), polystyrene foam (buffer) and polyethylene (bags, protective foam sheet.) Your system consists of materials which can be recycled and reused if disassembled by a specialized company. Please observe the local regulations regarding the disposal of packaging materials, exhausted batteries and old equipment.



#### Note

- The type plate is located on the back panel of the right speaker.

## 2 Your multimedia speaker

Congratulations on your purchase and welcome to Philips!  
To fully benefit from the support that Philips offers, register your product at [www.philips.com/welcome](http://www.philips.com/welcome).



Specifications are subject to change without notice  
© 2013 Koninklijke Philips Electronics N.V.  
All rights reserved.

SPA4270BT\_93\_UM\_V1.0



## Get started

### ! Caution

- Use of controls or adjustments or performance of procedures other than herein may result in hazardous radiation exposure or other unsafe operation.

Always follow the instructions in this chapter in sequence.

### Installation

**1** Insert the RCA cable from the left speaker to the **SPEAKER OUT** socket on the right speaker.

**2** Connect the AC plug to AC power socket.

## 3 Play

### Play through Bluetooth

The multimedia speaker uses Bluetooth wireless technology to stream music from your portable device to the system.

### = Note

- Your Bluetooth device should be with Bluetooth software of version 2.1 or above.
- Before you connect a Bluetooth device to this multimedia speaker, familiarize yourself with the Bluetooth capabilities of the device.
- Keep this multimedia speaker away from other electronic devices that may cause interference.
- Make sure that the multimedia speaker is installed properly before using.

- On the side panel of the right speaker, rotate the **VOL** knob clockwise.

↳ Bluetooth will be activated automatically.

↳ The LED indicator on the multimedia speaker blinks.

- To switch off the speaker, rotate the **VOL** knob counter-cl ockwise, until you hear one click.
- On your Bluetooth device, activate Bluetooth and search for **Philips SPA4270BT**.

- For the first-time connection, select **Philips SPA4270BT** to start pairing.

↳ For some devices, you may need to input “0000” as pairing password.

↳ If connection is successful, you will hear double beep confirmation.

↳ The LED indicator lights in blue.
- Play audio with the media player of your device.

↳ The audio comes out through the multimedia speaker.

↳ Next time you switch on **Philips SPA4270BT**, the speaker connects to the last paired device automatically.

↳ To connect **Philips SPA4270BT** to another Bluetooth device, switch off Bluetooth on current Bluetooth device.

### ✻ Tip

- The effective operation range between the multimedia speaker and the paired device is approximately 10 meters (30 feet).
- Any obstacle between the speaker and the device can reduce the operational range.

### Play through the audio cable

### = Note

- Make sure that the multimedia speaker is installed properly before using.

You can also play music from an external audio device, such as a computer, mobile phone, MP3 player; etc.

- Connect the 3.5mm audio in cable (fixed to the **AUX-IN** socket on the right speaker) to the headphone socket on the external device.

↳ **SPA4270BT** exits Bluetooth pairing mode when the audio cable is connected to an external audio device.
- On the side panel of the right speaker, rotate the **VOL** knob clockwise.

↳ The LED indicator on the multimedia speaker turns on stably.
- Play music from the device.

- After use, rotate the **VOL** knob counter-clockwise to switch off the multimedia speaker and unplug.

## Control Play

To increase or decrease volume,

- When the multimedia speaker is turned on, rotate the **VOL** knob on the side panel of the right speaker to adjust the volume.

To adjust bass or treble level,

- Rotate the **BASS** knob on the back panel of the right speaker to adjust the bass.
- Rotate the **TREBLE** knob on the back panel of the right speaker to adjust the treble.

## 4 Product information

Input	220V ~ 50Hz 150mA
Operation power consumption	15W
Standby power consumption	<1W
Dimensions (W x H x D)	143 x220 x 150 mm

System Requirements:	
PC	Mac
Windows® 98SE, Windows® ME, Win-dows® 2000, Windows® XP, or Windows® Vista™, Windows 7	Mac OS9/OS® X, or later

## 5 Troubleshooting

To keep the warranty valid, never try to repair the system yourself. If you encounter problems when using the product, check the following points before requesting service. If the problem remains unsolved, register your product and get support at [www.philips.com/support](http://www.philips.com/support).

- Make sure that the speakers are correctly installed.
- Make sure the LED lights up.

# ZH-CN

## 1 注意事项

## 安全

重要安全说明

- 阅读并遵循所有说明。
- 切勿将本产品暴露在滴漏或溅漏环境下，也不要 在产品上面放置装有液体的物体（如花瓶）。
- 要完全断开电源输入，应从电源上拔下产品的电源插头。
- 产品的电源插头应触手可及，或者在需要使用时应能轻易插拔。
- 应让本产品远离阳光直射、明火或其它热源。
- 在雷电天气期间或长期不用的情况下，请从电源插座上拔下产品的电源插头。
- 拔出电源线时，应始终拔动插头，切勿拉扯线缆。
- 仅使用制造商指定的附件/配件。
- 主插头用作断路装置，在不使用时应将插头拔掉，应保证与电网电源完全切断。

### ! 警告

- 切勿拆下本装置的外壳。
- 切勿润滑本装置的任何部件。
- 将本装置置于水平、坚硬的平稳表面上。
- 切勿将本装置放在其它电子设备上面。
- 让本装置远离水、湿气和盛有液体的物体。
- 应让本装置远离阳光直射、明火或高温。

## 注意

如果用户未经 Philips 优质生活部门的明确许可而擅自对此设备进行更改或修改，则可能导致其无权操作此设备。

#### 旧产品和电池的处理

本产品采用可回收利用的高性能材料和组件制造而成。切勿将本产品与其它生活垃圾一起处理。请自行了解当地关于分类收集电子、电气产品及电池的规定。正确弃置这些产品有助于避免对环境 和人体健康造成潜在的负面影响。本产品所含的电池不能与一般的生活垃圾一同弃置。请自行了解当地关于分类收集电池的规定。正确弃置电池有助于避免对环境 和人类健康造成潜在的负面影响。关于您所在地区回收中心的更多信息，请访问 [www.recycle.philips.com](http://www.recycle.philips.com)。

**环境信息**

已省去所有不必要的包装。我们努力使包装易于分为三种材料：纸板（盒）、泡沫塑料（缓冲物）和聚乙烯（袋、保护性泡沫片）。

您的系统包含可回收利用的材料（如果由专业公司拆卸）。请遵守当地有关包装材料、废电池和旧设备的处理的规定。

### = 注

- 铭牌（铭牌上的信息包括工作电压，绝缘等级）位于右扬声器的后面板，使用前请先了解铭牌上的相关信息。

## 2 您的多媒体音箱

欢迎购买并使用飞利浦产品！为了您能充分享受飞利浦提供的支持，请在 [www.philips.com/welcome](http://www.philips.com/welcome) 上注册您的产品。

## 使用入门

### ! 注意

- 不按此处说明的操作流程来使用控件或进行调整可能导致危险的激光辐射或其它不安全 的操作。

请务必遵循本章的说明并依照顺序。

### 安装

- 将左扬声器上的 RCA 线缆插入右扬声器上的 **SPEAKER OUT** 插孔。
- 将交流电源插头连接到交流电源插座。

## 3 播放

### 通过蓝牙播放

多媒体音箱使用蓝牙无线技术将音乐从便携式设备传输至系统。

### = 注

- 蓝牙设备应具有 2.1 或更高版本蓝牙软件。
- 将蓝牙设备连接至该多媒体音箱之前，您需要熟悉设备的蓝牙功能。
- 请让该多媒体音箱远离任何其他可能造成干扰的电子 设备。
- 使用之前，请确保多媒体音箱安装正确。

- 在右扬声器侧面板上，顺时针旋转 **VOL** 旋钮。

↳ 将自动启用蓝牙功能。

↳ 多媒体音箱上的 LED 指示灯开始闪烁。

- 要关闭扬声器，请逆时针旋转 **VOL** 旋钮，直到听到“咔哒”一声。
- 在您的蓝牙设备上，激活蓝牙，并搜索 **Philips SPA4270BT**.

- 首次连接时，请选择 **Philips SPA4270BT** 以开始配对。

↳ 对于某些设备，您需要输入“0000”作为配对密码

↳ 连接成功后，会听到两声确认蜂鸣音。

↳ LED 指示灯会呈蓝色亮起。
- 使用设备的媒体播放器播放音频。

↳ 音频将通过多媒体音箱播放出来。

↳ 下次打开 **Philips SPA4270BT** 时，扬声器将自动连接到上次配对的设备。

↳ 要将 **Philips SPA4270BT** 连接到其他蓝牙设备，请关闭当前蓝牙设备上的蓝牙。

### ✻ 提示

- 多媒体音箱和已配对设备之间的有效工作范围约为 10 米（30 英尺）。
- 扬声器和设备之间的任何障碍物均有可能减小工作范围。

### 通过音频线缆播放

### = 注

- 使用之前，请确保多媒体音箱安装正确。

您也可以从外部音频设备播放音乐，例如从计算机、手机、MP3 播放器等。

- 将 3.5 毫米音频输入线缆（固定至右扬声器上的 **AUX-IN** 插孔）连接至外部设备的耳机插孔。

↳ **SPA4270BT** 在音频线缆连接到外部音频设备时退出蓝牙配对模式。

- 在右扬声器侧面板上，顺时针旋转 **VOL** 旋钮。

↳ 多媒体音箱上的 LED 指示灯稳定亮起。

- 从设备上播放音乐。

- 使用后，请逆时针旋转 **VOL** 旋钮，以关闭多媒体音箱并拔下电源插头。

### 控制播放

要增大或减小音量

- 打开多媒体音箱后，旋转右扬声器侧面板上的 **VOL** 旋钮可调节音量。

要调节低音或高音级别，

- 旋转右扬声器后面板上的 **BASS** 按钮可调节低音。
- 旋转右扬声器后面板上的 **TREBLE** 按钮可调节高音。

## 4 产品信息

交流电源	
输入	约 220 伏 50 赫兹 150 毫安
操作功耗	15 瓦
待机功耗	< 1 瓦
尺寸（宽x高x厚）	143 x220 x 150 毫米

系统要求:	
个人电脑	MAC
Windows® 98SE、Windows® ME、Windows® 2000、Windows® XP、或 Windows® Vista™、Windows 7	Mac OS9/OS® X 或更高版本

## 5 故障种类和处理方法

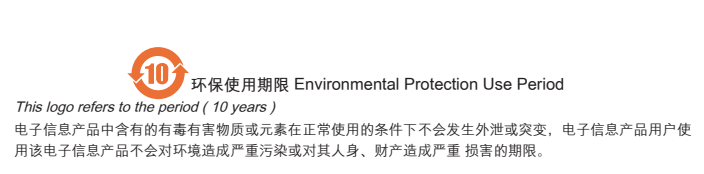
为保持保修的有效性，切勿尝试自行维修本装置。如果在使用本产品时遇到问题，请在申请服务之前检查以下事项。如果仍然无法解决问题，请在 [www.philips.com/support](http://www.philips.com/support) 上注册您的产品并获得支持。

- 确保已正确安装扬声器。
- 确保 LED 指示灯亮起。

部件名称 Name of the Parts	有毒有害物质或元素 Hazardous/toxic Substance					
	铅 (Pb, Lead)	汞 (Hg, Mercury)	镉 (Cd, cadmium)	六价铬(Chromium 6+)	多溴联苯 (PBB)	多溴二苯醚 (PBDE)
Housing 外壳	○	○	○	○	○	○
Loudspeakers 喇叭单元	○	○	○	○	○	○
PWBs 电路板组件	x	○	○	○	○	○
Accessories (Remote control & cables) 附件（遥控器，电源线，连接线）	x	○	○	○	○	○

○：表示该有毒有害物质在该部件所有均质材料中的含量均在SJ/T11363 - 2006 标准规定的限量要求以下。  
○: Indicates that this toxic or hazardous substance contained in all of the homogeneous materials for this part is below the limit requirement in SJ/T11363 — 2006.

×：表示该有毒有害物质至少在该部件的某一均质材料中的含量超出SJ/T11363 — 2006 标准规定的限量要求。  
X: Indicates that this toxic or hazardous substance contained in at least one of the homogeneous materials used for this part is above the limit requirement in SJ/T11363 - 2006.



This logo refers to the period ( 10 years ) during which the toxic or hazardous substances or elements contained in electronic information products will not leak or mutate so that the use of these [substances or elements] will not result in any severe environmental pollution, any bodily injury or damage to any assets.