

Always there to help you

Register your product and get support at
www.philips.com/support



Short User Manual

PHILIPS



AZ390W

2014 © WOOX Innovations Limited. All rights reserved.
Philips and the Philips' Shield Emblem are registered trademarks of Koninklijke Philips N.V. and are used by WOOX Innovations Limited under license from Koninklijke Philips N.V.

AZ390W_94_Short User Manual_V2.0



1 Important

- Read these instructions.
- Follow all instructions.
- Do not block any ventilation openings. Install in accordance with the manufacturer's instructions.
- Do not install near any heat sources such as radiators, heat registers, stoves, or other apparatus (including amplifiers) that produce heat.
- Protect the power cord from being walked on or pinched, particularly at plugs, convenience receptacles, and the point where they exit from the unit.
- Only use attachments/accessories specified by the manufacturer.
- Unplug this unit during lightning storms or when unused for long periods of time.
- Refer all servicing to qualified service personnel. Servicing is required when the unit has been damaged in any way, such as power-supply cord or plug is damaged, liquid has been spilled or objects have fallen into the apparatus, the unit has been exposed to rain or moisture, does not operate normally, or has been dropped.
- Battery usage CAUTION – To prevent battery leakage which may result in bodily injury, property damage, or damage to the unit:
 - Install all batteries correctly, + and - as marked on the unit.
 - Do not mix batteries (old and new or carbon and alkaline, etc.).
 - Remove batteries when the unit is not used for a long time.
- Batteries (battery pack or batteries installed) shall not be exposed to excessive heat such as sunshine, fire or the like.
- The unit shall not be exposed to dripping or splashing.
- Do not place any sources of danger on the unit (e.g. liquid filled objects, lighted candles).
- Where the MAINS plug or an appliance coupler is used as the disconnect device, the disconnect device shall remain readily operable.



This 'bolt of lightning' indicates uninsulated material within your unit may cause an electrical shock. For the safety of everyone in your household, please do not remove product covering.

The 'exclamation point' calls attention to features for which you should read the enclosed literature closely to prevent operating and maintenance problems.

WARNING: To reduce the risk of fire or electric shock, this apparatus should not be exposed to rain or moisture and objects filled with liquids, such as vases, should not be placed on this apparatus.

CAUTION: To prevent electric shock, match wide blade of plug to wide slot, fully insert.



Warning

- Never remove the casing of this apparatus.
- Never place this apparatus on other electrical equipment.
- Ensure that you always have easy access to the power cord, plug or adaptor to disconnect the apparatus from the power.



Caution

- Use of controls or adjustments or performance of procedures other than herein may result in hazardous radiation exposure or other unsafe operation.

2 Notice

Any changes or modifications made to this device that are not expressly approved by WOOX Innovations may void the user's authority to operate the equipment.

Disposal of your old product



Your product is designed and manufactured with high quality materials and components, which can be recycled and reused.

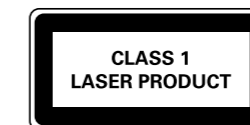
Do not throw away the product with the normal household waste at the end of its life, but hand it in at an official collection point or recycling. By doing this, you help to preserve the environment.

Environmental information

All unnecessary packaging has been omitted. We have tried to make the packaging easy to separate into three materials: cardboard (box), paper pulp (buffer) and polyethylene (bags, protective foam sheet.)

Your system consists of materials which can be recycled and reused if disassembled by a specialized company. Please observe the local regulations regarding the disposal of packaging materials, exhausted batteries and old equipment.

This apparatus includes these labels:



Class II equipment symbol



This symbol indicates that the apparatus has a double insulation system.



Note

- The type plate is located on the bottom of the apparatus.

3 Product information



Note

- Product information is subject to change without prior notice.

Specifications

Amplifier

Rated Output Power	2 x 1W RMS
Frequency Response	63 Hz - 20 kHz, ±3 dB
Signal to Noise Ratio	>62 dBA
Total Harmonic Distortion	<1 %
Audio In	650 mV

Disc

Laser type	Semiconductor
Disc diameter	8/12 cm
Support discs	CD-DA, CD-R, CD-RW, MP3-CD
Audio DAC	24 Bits, 44.1 kHz
Total Harmonic Distortion	<1 %
Frequency Response	63Hz -20kHz, ±3 dB
S/N Ratio	>62 dBA

Tuner

Tuning Range	FM: 87.5 - 108 MHz
Sensitivity	
- FM(26dB S/N Ratio)	< 22dBf
Total Harmonic Distortion	<3%
Signal to Noise Ratio	FM: >55 dB

General

Power supply	
- AC Power	220 - 240V ~, 50/60 Hz
- Battery	DC 9V, 6 x 1.5V R14/UM2/C Cell

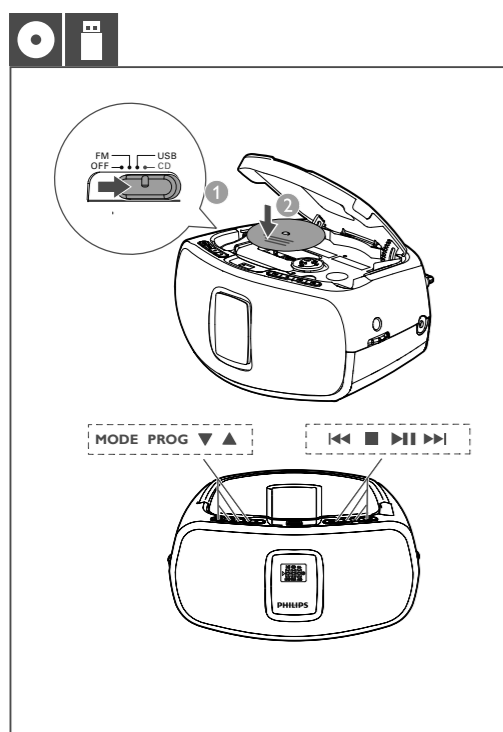
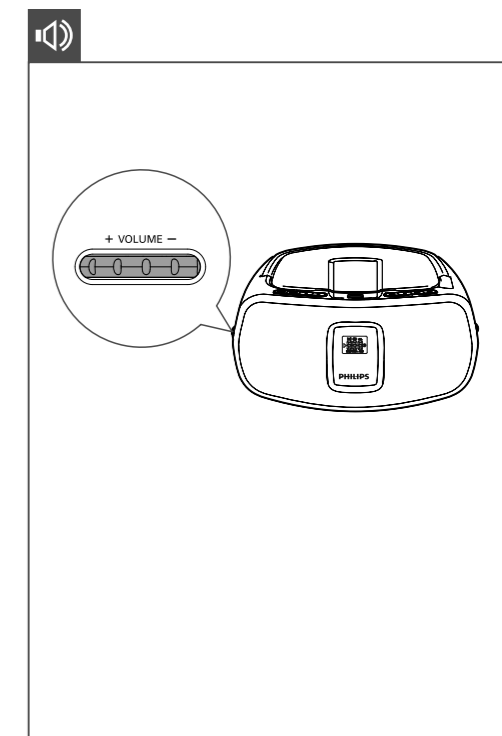
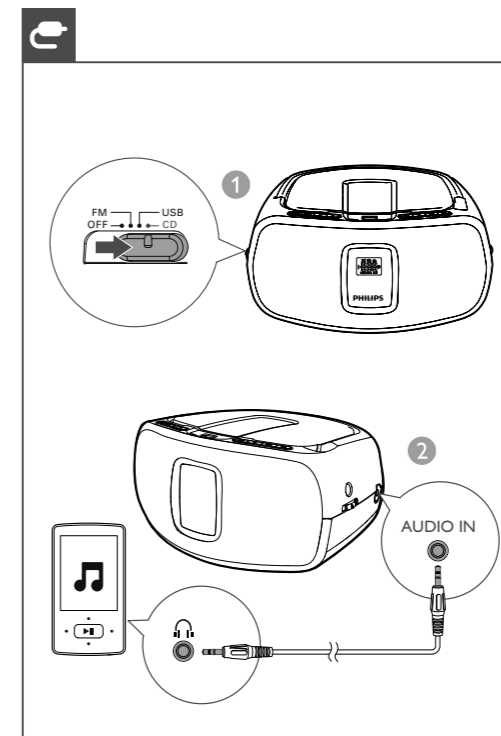
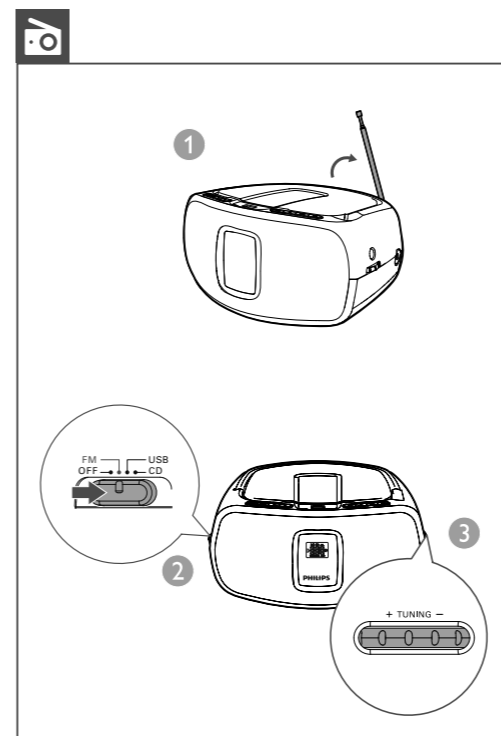
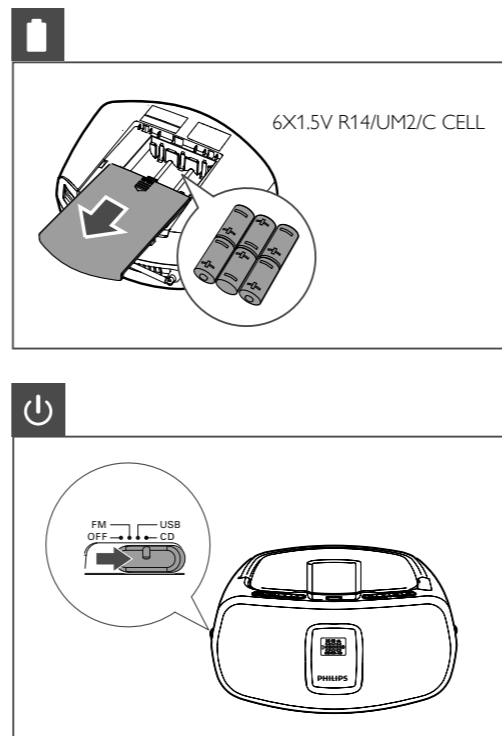
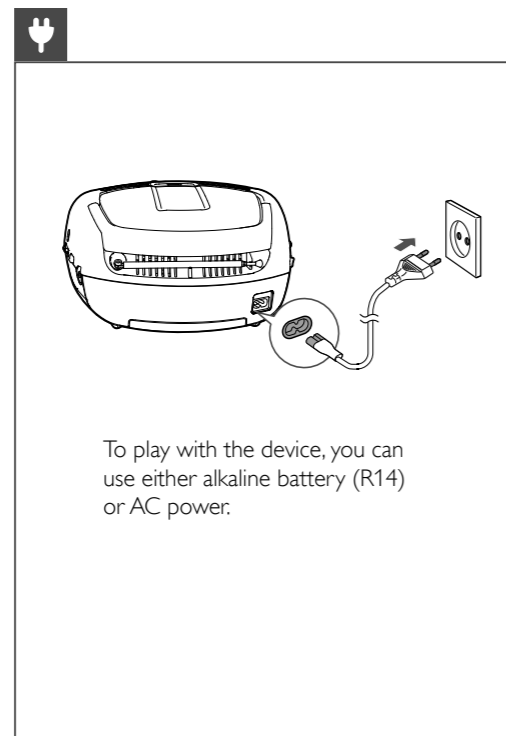
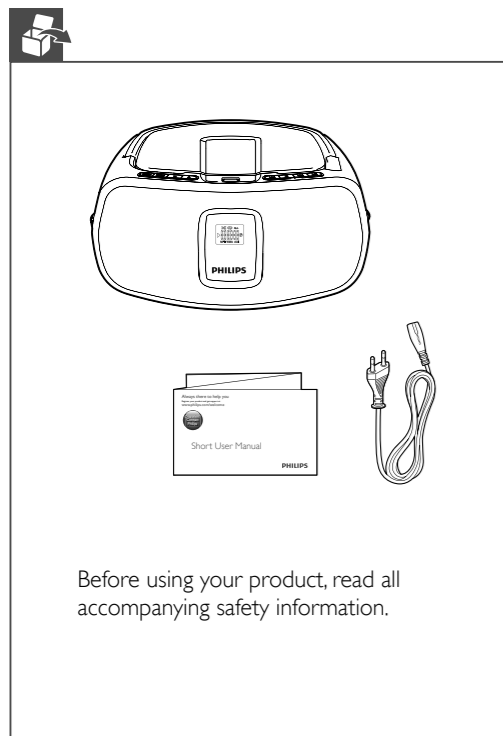
Operation Power Consumption	10W
Standby Power Consumption	< 0.5W

Dimensions

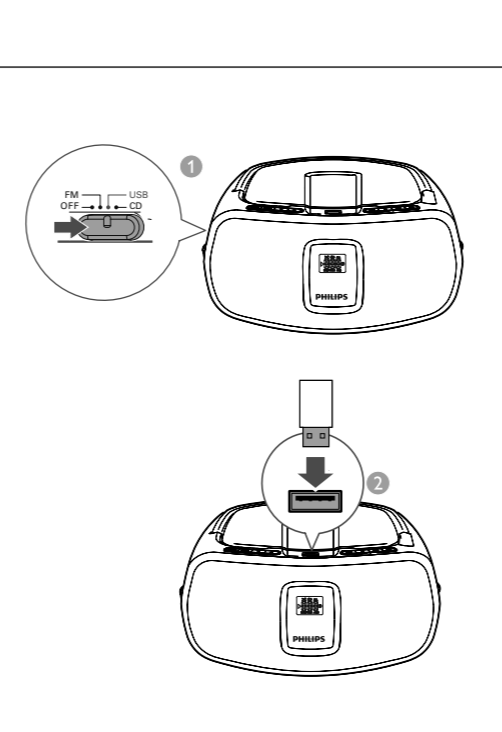
- Main Unit (W x H x D)	243 x 124 x 199 mm
-------------------------	--------------------

Weight

- Main Unit	1.0 kg
- With Packing	1.5 kg



■ : Stop play or erase program.
 ◀▶ : Skip to the previous/next track or search within play.
 ▲/▼ : Skip to the previous/next album.
 ▶|| : Pause or start play.
 [PROG]: Program the play sequence of tracks.
 [MODE]: Select a play mode.



Program tracks

- 1 Press ■ to stop playback.
- 2 Press **PROG** to activate the programming mode.
- 3 For MP3 tracks, press ▲/▼ to select an album.
- 4 Press ◀▶ to select a track, and then press **PROG** to confirm.
- 5 Repeat steps 3 to 4 to program more tracks.
- 6 Press ▶|| to play the programmed tracks.

