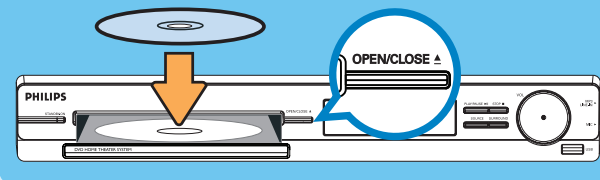


3 Enjoy

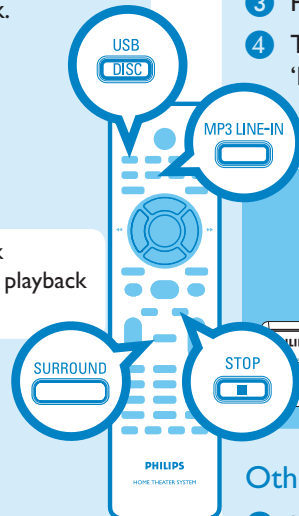
Start disc playback

- 1 Press **OPEN/CLOSE** \blacktriangle to open the disc tray.

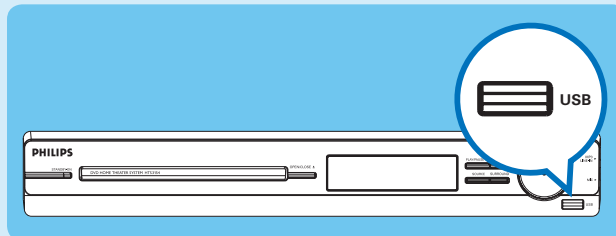


- 2 Place a disc with the disc label facing up.
- 3 Press **OPEN/CLOSE** \blacktriangle to close the disc tray.
- 4 Playback starts automatically.
- 5 If the disc menu appears on the TV, use \blacktriangleleft \blacktriangleright \blacktriangle \blacktriangledown keys or the numeric keypad to select an option in the menu and press **OK** to start playback.
- To enjoy the powerful surround sound from the speakers, press **SURROUND** on the remote control to turn on the multi-channel surround mode.
- 6 Press \blacksquare to stop playback.

Note When you press $\blacktriangleright\blackparallel$ button, playback resumes from where it last stopped. To start playback from the beginning, you have to press \blacktriangleleft .



Playback other supported devices

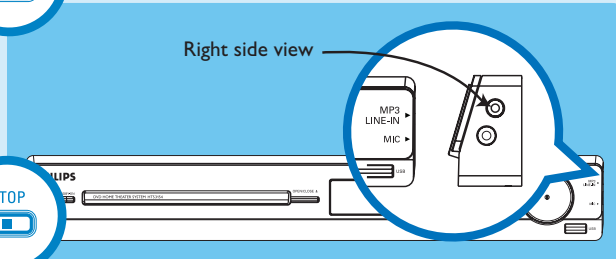


USB device

- 1 Insert your USB device to the USB socket.
- 2 Press **DISC/USB** to switch to 'USB' mode.
- 3 Press $\blacktriangleright\blackparallel$ to start playback.
- 4 To stop playback, press **DISC/USB** to switch to 'DISC' mode. You can unplug your USB device now.

Other portable audio player

- 1 Use the supplied MP3 LINE-IN cable to connect the headphone output socket on your portable audio player to MP3 LINE-IN socket.
- 2 Press **PLAY** on your portable audio player.
- 3 Press **MP3 LINE-IN** to listen to the playback.

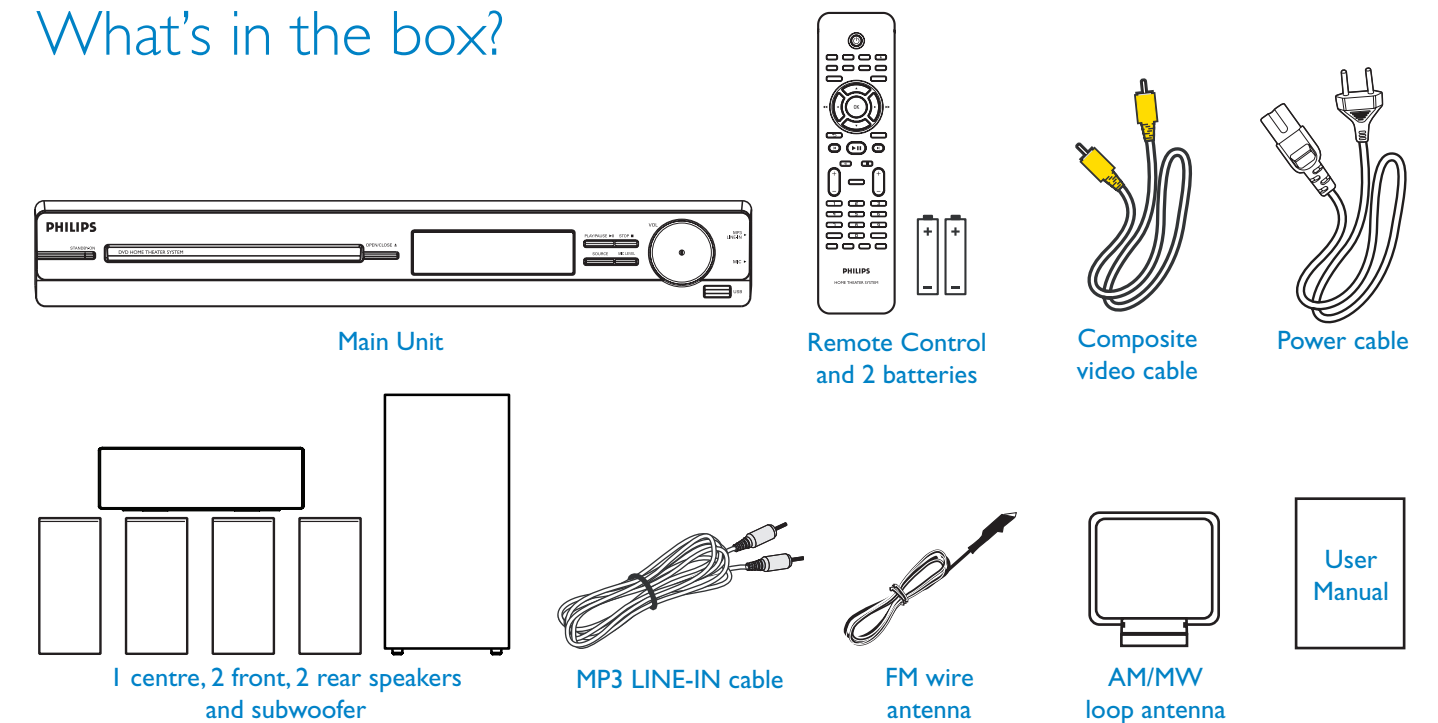


Quick Start Guide



- 1 Connect
- 2 Set up
- 3 Enjoy

What's in the box?



Need help?

User Manual

See the user manual that came with your Philips DVD Home Theatre System.

Online

Go to www.philips.com/support



2007 © Koninklijke Philips N.V.
All rights reserved.

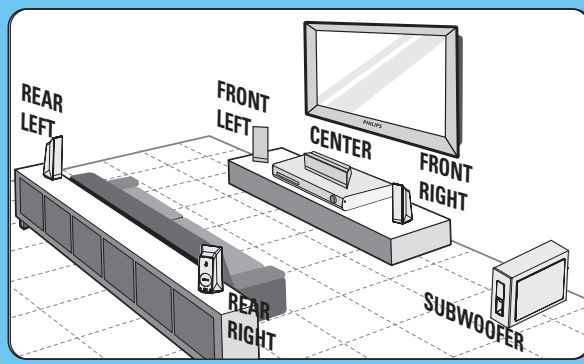
www.philips.com



1 Connect

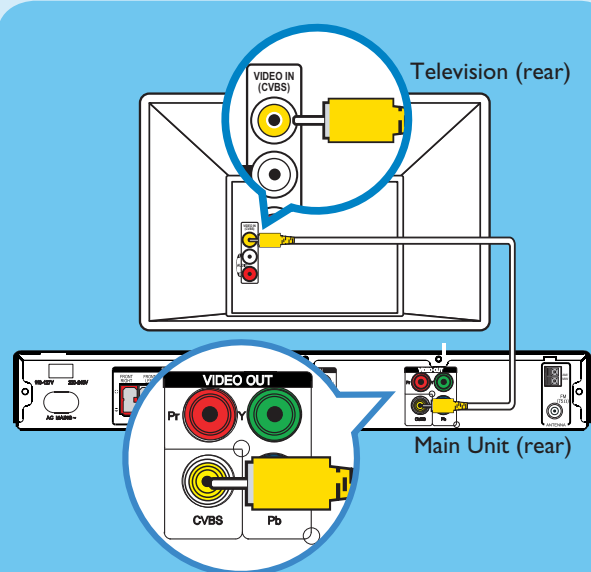
A Placement

Proper speakers system placement is important to ensure optimum sound performance.



- 1 Place the centre speaker above or close to the TV.
- 2 Place the subwoofer on the floor, at least one metre away from the TV.
- 3 Place the front speakers at equal distances from the TV.
- 4 Place the rear speakers at normal listening ear level.

B Connect the main unit to TV

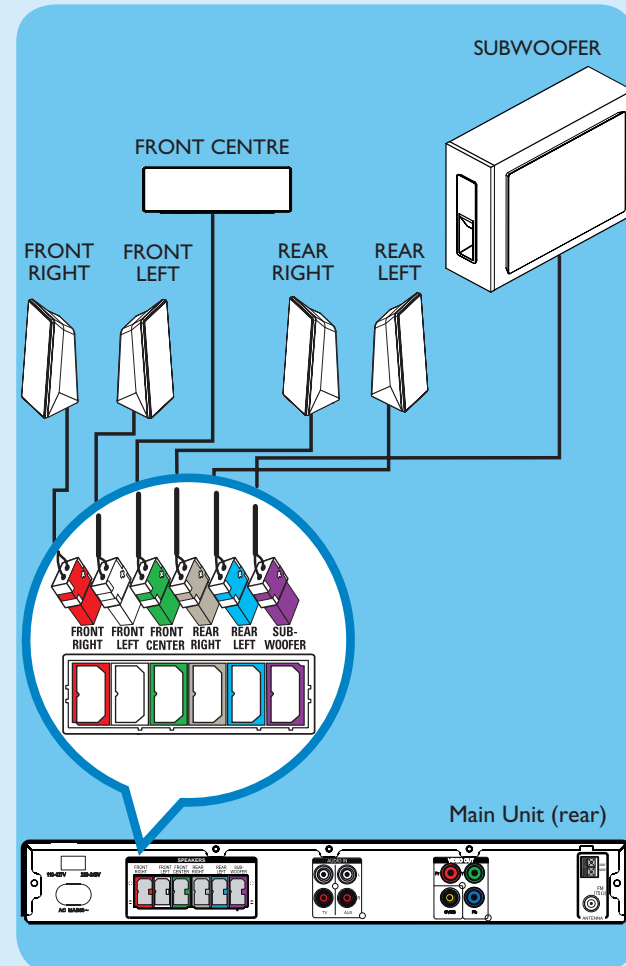


- Connect a composite video cable (supplied) from the CVBS socket on the main unit to the VIDEO IN socket on your TV.

Note It is important to connect the main unit directly to your TV.

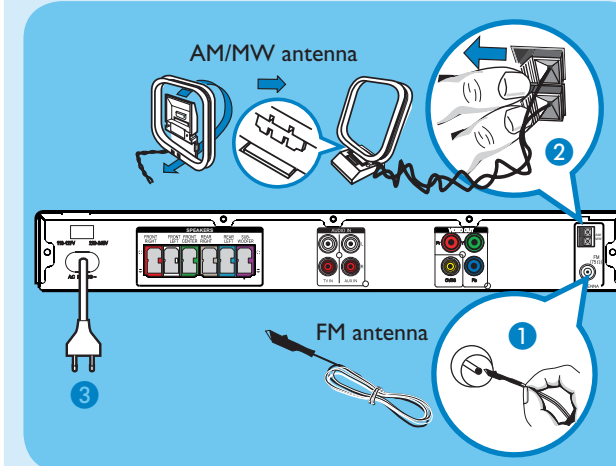
C Connect the speakers and subwoofer

Connect the various coloured plugs from the speakers and subwoofer to the same coloured sockets at the rear of the main unit.



D Connect the radio antennas

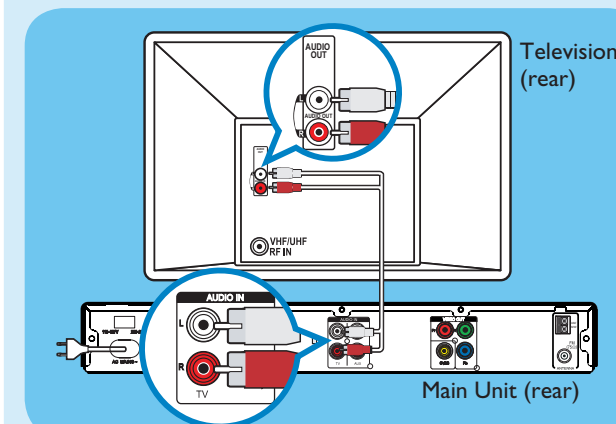
Keep the antennas away from the electronic devices to prevent unwanted interference.



- 1 Connect the FM antenna to the inner pin of the FM 75 Ω socket. For optimum reception, extend the wire and fix its end to the wall.
- 2 Unfold the AM/MW loop antenna and fix the claw into the slot. Push the tabs and insert the wires into the AM/MW sockets.
- 3 Connect the power cable from the main unit to the AC power outlet.

E Connect audio output from TV (optional)

To hear the TV audio through this home theatre system, use a red and white audio cables (not supplied) to connect the AUDIO IN-TV sockets on the main unit to the AUDIO OUT sockets on your TV.

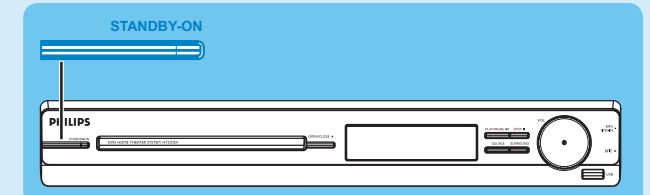


Note Press **TV** on the remote control to get the sound output from the speakers system when watching the TV programmes.

2 Set up

A Finding the viewing channel

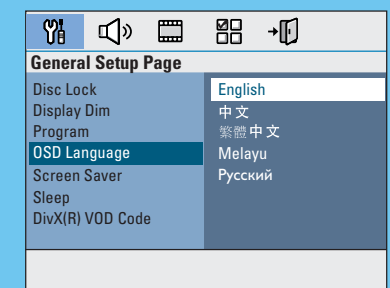
- 1 Press **STANDBY ON** on the main unit to turn it on.
- 2 Turn on the TV. Use the TV's remote control to select the correct viewing channel.



Note To search for the correct viewing channel, press the Channel Down button on the TV's remote control repeatedly (or AV, SELECT, **CH** button) until you see the Video In channel.

B Select the display language on the screen

- 1 Press **SETUP**. The { General Setup Page } appears.



- 2 Press **▼** to select { OSD Language } and press **▶**.
- 3 Use **▼▲** keys to select a language option in the menu and press **OK** to confirm.
- 4 Press **SETUP** to exit.

Note The language set here is only for the menus that are shown on the TV while operating this Home Theatre system, not for the DVD disc menu.

There are various setup options (Audio Setup, Video Setup, Preference Setup) available on this Home Theatre System. Refer to the user manual for more information.