

Always there to help you

Register your product and get support at
www.philips.com/welcome

DTM9030



User manual

PHILIPS

Contents

1	Safety and Notice	2
	Safety	2
	Notice	4
2	Your Docking Entertainment System	5
	Introduction	5
	What's in the box	5
	Overview of the main speaker	6
	Overview of the remote control	8
3	Get started	10
	Connect speaker cables	10
	Connect FM antenna	11
	Connect power	11
	Prepare the remote control	11
	Set clock	12
	Turn on	12
4	Play	13
	Play from a disc	13
	Play from USB	13
5	Play options	14
	Pause/resume play	14
	Stop play	14
	Skip to a track	14
	Search within a track	14
	Repeat and shuffle play	14
	Program tracks	14
	Display ID3 information	14
6	Play from a Bluetooth device	15
7	Play iPod/iPhone	16
	Compatible iPod/iPhone	16
	Load the iPod/iPhone	16
	Listen to the iPod/iPhone	16
	Charge the iPod/iPhone	17
	Remove the iPod/iPhone	17
8	Listen to the radio	18
	Tune to a radio station	18
	Select stereo/mono broadcast	18
	Program radio stations	18
	Select a preset radio station	18
	Display play information	19
9	Adjust sound	20
	Adjust volume	20
	Adjust bass/treble level	20
	Mute sound	20
10	Other features	21
	Set the sleep timer	21
	Set the alarm timer	21
	Play from an external device	21
11	Product information	23
	Specifications	23
	USB playability information	24
	Supported MP3 disc formats	24
12	Troubleshooting	25

1 Safety and Notice

Read and understand all instructions before you use this product. If damage is caused by failure to follow the instructions, the warranty does not apply.

Safety



Warning

- Never remove the casing of this apparatus.
- Never lubricate any part of this apparatus.
- Never place this apparatus on other electrical equipment.
- Keep this apparatus away from direct sunlight, naked flames or heat.
- Never look into the laser beam inside this apparatus.
- Ensure that you always have easy access to the power cord, plug or adaptor to disconnect this apparatus from the power.

- ① Read these instructions.
- ② Keep these instructions.
- ③ Heed all warnings.
- ④ Follow all instructions.
- ⑤ Do not use this apparatus near water.
- ⑥ Clean only with dry cloth.
- ⑦ Do not block any ventilation openings. Install in accordance with the manufacturer's instructions.
- ⑧ Do not install near any heat sources such as radiators, heat registers, stoves, or other apparatus (including amplifiers) that produce heat.
- ⑨ Protect the power cord from being walked on or pinched, particularly at plugs, convenience receptacles, and the point where they exit from the apparatus.

- ⑩ Only use attachments/accessories specified by the manufacturer.
- ⑪ Use only with the cart, stand, tripod, bracket, or table specified by the manufacturer or sold with the apparatus. When a cart is used, use caution when moving the cart/apparatus combination to avoid injury from tip-over.



- ⑫ Unplug this apparatus during lightning storms or when unused for long periods of time.
- ⑬ Refer all servicing to qualified service personnel. Servicing is required when the apparatus has been damaged in any way, such as power-supply cord or plug is damaged, liquid has been spilled or objects have fallen into the apparatus, the apparatus has been exposed to rain or moisture, does not operate normally, or has been dropped.
- ⑭ Apparatus shall not be exposed to dripping or splashing.
- ⑮ Do not place any sources of danger on the apparatus (e.g. liquid filled objects, lighted candles).
- ⑯ Where the MAINS plug or an appliance coupler is used as the disconnect device, the disconnect device shall remain readily operable.
- ⑰ Make sure there is enough free space around the product for ventilation.
- ⑱ Batteries (battery pack or batteries installed) shall not be exposed to excessive heat such as sunshine, fire or the like.

Important notes for users in the U.K.

Mains fuse

This information applies only to products with a UK mains plug.

This product is fitted with an approved molded plug. If you replace the fuse, use one with:

- the ratings shown on the plug,
- a BS 1362 approval, and
- the ASTA approval mark.

Contact your dealer if you are not sure about what type of fuse to use.

Caution: To conform with the EMC directive (2004/108/EC), do not detach the plug from the power cord.

How to connect a plug

The wires in the power cord are colored as follows: blue = neutral (N), brown = live (L).

If the colors do not correspond with the colors on your plug, identify the terminals in your plug as follows:

- 1 Connect the blue wire to the terminal marked N or colored black.
- 2 Connect the brown wire to the terminal marked L or colored red.
- 3 Do not connect either wire to the earth terminal in the plug, marked E (or e) or colored green (or green and yellow).

Before you replace the plug cover, make sure that the cord grip is clamped over the sheath of the cable and not just over the two wires in the cable.

Care for your product

- Do not insert any objects other than discs into the disc compartment.
- Do not insert warped or cracked discs into the disc compartment.
- Remove the discs from the disc compartment if you are not using the product for an extended period of time.
- Only use microfiber cloth to clean the product.

Care of the environment



Your product is designed and manufactured with high quality materials and components, which can be recycled and reused.



When this crossed-out wheeled bin symbol is attached to a product it means that the product is covered by the European Directive 2002/96/EC.

Please inform yourself about the local separate collection system for electrical and electronic products.

Please act according to your local rules and do not dispose of your old products with your normal household waste. Correct disposal of your old product helps to prevent potential negative consequences for the environment and human health.



Your product contains batteries covered by the European Directive 2006/66/EC, which cannot be disposed with normal household waste. Please inform yourself about the local rules on separate collection of batteries because correct disposal helps to prevent negative consequences for the environmental and human health.



Note

- The type plate is located on the back of the apparatus.

Notice

CE 0560

Hereby, WOOX Innovations declares that this product is in compliance with the essential requirements and other relevant provisions of Directive 1999/5/EC. You can find the Declaration of Conformity on www.philips.com/ support.

Any changes or modifications made to this device that are not expressly approved by WOOX Innovations may void the user's authority to operate the equipment.

Environmental information

All unnecessary packaging has been omitted. We have tried to make the packaging easy to separate into three materials: cardboard (box), polystyrene foam (buffer) and polyethylene (bags, protective foam sheet.)

Your system consists of materials which can be recycled and reused if disassembled by a specialized company. Please observe the local regulations regarding the disposal of packaging materials, exhausted batteries and old equipment.

Philips and the Philips' Shield Emblem are registered trademarks of Koninklijke Philips N.V. and are used by WOOX Innovations Limited under license from Koninklijke Philips N.V."

Specifications are subject to change without notice. WOOX reserves the right to change products at any time without being obliged to adjust earlier supplies accordingly.



**Be responsible
Respect copyrights**

The making of unauthorized copies of copy-protected material, including computer programs, files, broadcasts and sound recordings, may be an infringement of

copyrights and constitute a criminal offence. This equipment should not be used for such purposes.



Windows Media and the Windows logo are trademarks, or registered trademarks of Microsoft Corporation in the United States and/or other countries.



"Made for iPod" and "Made for iPhone" mean that an electronic accessory has been designed to connect specifically to iPod or iPhone respectively, and has been certified by the developer to meet Apple performance standards. Apple is not responsible for the operation of this device or its compliance with safety and regulatory standards. Please note that the use of this accessory with iPod or iPhone may affect wireless performance.

iPod and iPhone are trademarks of Apple Inc., registered in the U.S. and other countries.

Bluetooth

The Bluetooth® word mark and logos are registered trademarks owned by Bluetooth SIG, Inc. and any use of such marks by WOOX Innovations is under license.



© 2013 CSR plc and its group companies.

The aptX® mark and the aptX logo are trade marks of CSR plc or one of its group companies and may be registered in one or more jurisdictions.

2 Your Docking Entertainment System

Congratulations on your purchase, and welcome to Philips! To fully benefit from the support that Philips offers, register your product at www.philips.com/welcome.

Introduction

With this unit, you can:

- enjoy audio from discs, USB devices, iPod/iPhone, Bluetooth devices, and other external devices
- listen to radio stations

The unit supports the following media formats:

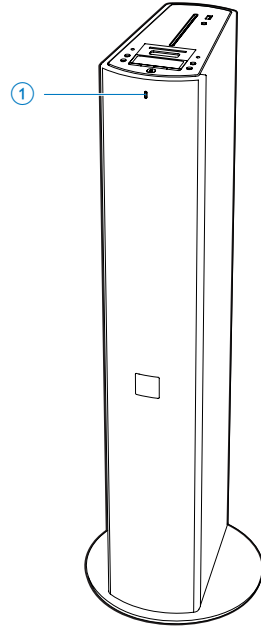
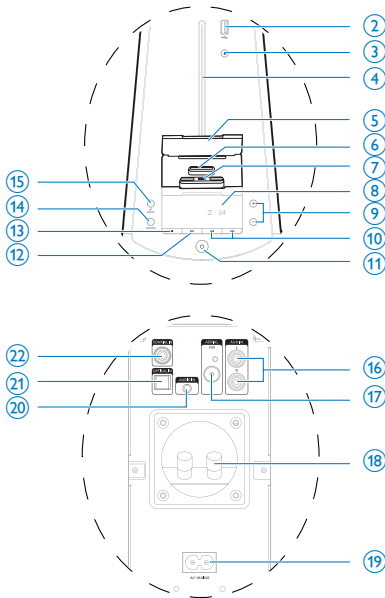


What's in the box

Check and identify the contents of your package:

- Main unit
- Remote control with two AAA batteries
- Power cord
- Speaker connection cable
- FM antenna
- Printed materials

Overview of the main speaker



① Bluetooth indicator

② 

- USB socket.

③ 

- Eject the disc.

④ Disc compartment

⑤ Dock cover

- Lift up to expose the dock connectors.

⑥ Dock for iPod/iPhone with 30-pin connection

⑦ Dock for iPod/iPhone with lightning connection

⑧ Display panel

- Show the current status.

⑨ +/-

- Adjust volume.

⑩ 

- In Disc/USB/Dock source, tap to skip to the previous/next track.
- In Disc/USB/Dock source, tap and hold to search within a track.
- In tuner source, tap to tune to a radio station.
- Tap to set clock and timer.

⑪ 

- Turn the unit on.
- Switch to standby mode or Eco power standby mode.

⑫ ►||

- Start or pause play.

⑬ ■

- Stop play or erase a program.

⑭ SOURCE

- Select a source: DISC, USB, FMTUNER, dock (IPOD_IPHONE), BLUETOOTH, AUX, AUDIO_IN, OPTICAL, or COAXIAL.

⑮ BT SETUP

- (Press and hold) remove the existing pairing information.

⑯ AUX IN (L/R)

- Sockets for RCA (red/white) audi input.

⑰ FM AERIAL

- Socket for FM antenna connection.

⑱ Speaker connectors

- Sockets for speaker connection.

⑲ AC~MAINS

- Power supply socket.

⑳ AUDIO IN

- 3.5mm audio input socket.

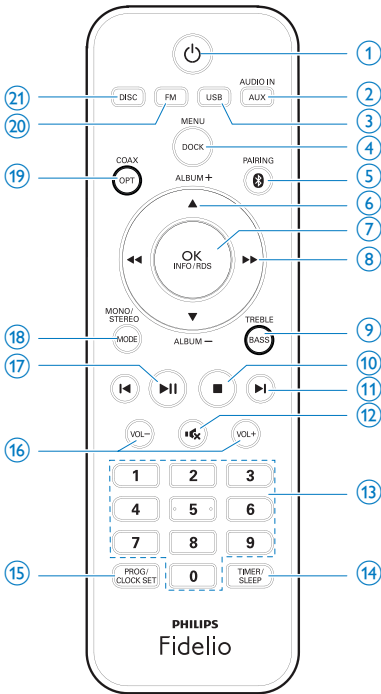
㉑ OPTICAL IN

- Optical input socket.

㉒ COAXIAL IN

- Coaxial input socket.

Overview of the remote control



①

- Turn the unit on.
- Switch to standby mode or Eco power standby mode.

② AUDIO IN/AUX

- Select the 3.5mm or RCA (red/white) audio input source.

③ USB

- Select the USB source.

④ DOCK/MENU

- Select the dock (IPOD_IPHONE) source.
- Access the iPod/iPhone menu.

⑤ PAIRING

- Select the Bluetooth source.

⑥ ALBUM +/- /

- Skip to previous/next album.
- Navigate through the iPod/iPhone menu.

⑦ OK/INFO/RDS

- Confirm a selection.
- Select display information during play.
- Display Radio Data System (RDS) information.

⑧ /

- In Disc/USB/Dock source, press to search within a track.
- In tuner source, press to tune to a radio station.
- Navigate through the iPod/iPhone menu.

⑨ BASS/TREBLE

- Adjust the bass/treble level.

⑩

- Stop play or erase a program.

⑪ /

- In Disc/USB/Dock source, press to skip to the previous/next track.
- Set clock and timer.
- Select a preset radio station.

⑫

- Mute or restore sound.

⑬ Numeric keypad

- Select a track.
- Select a preset radio station.

⑭ TIMER/SLEEP

- Set the sleep timer.
- Set the alarm timer.

⑮ PROG/CLOCK SET

- In Disc/USB source, press and hold to program tracks.
- In tuner source, press and hold to program radio stations.
- In standby mode, press and hold to set the clock.

⑯ VOL +/-

- Adjust volume.

⑰ ►||

- Start or pause play.

⑱ MODE/MONO/STEREO

- Select the repeat/shuffle play mode.
- Switch between STEREO and MONO in tuner mode.

⑲ OPT/COAX

- Select the coaxial or optical input source.

⑳ FM

- Select the FM tuner source.

㉑ DISC

- Select the disc source.

3 Get started



Caution

- Use of controls, or adjustments or performance of procedures other than herein may result in hazardous radiation exposure or other unsafe operation.

Always follow the instructions in this chapter in sequence.

If you contact Philips, you will be asked for the model and serial number of this device. The model number and serial number are on the back of the device. Write the numbers here:

Model No. _____

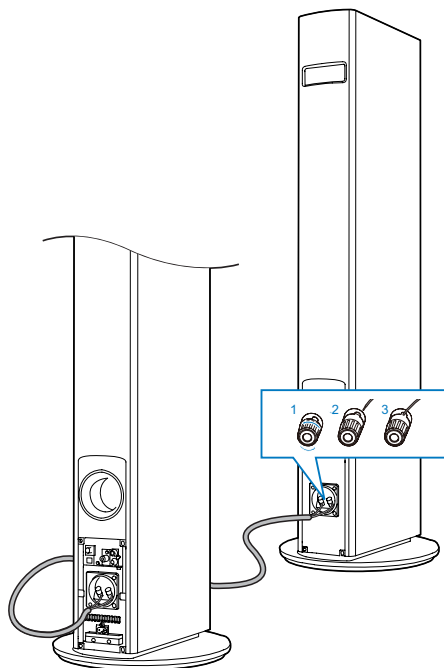
Serial No. _____

Connect speaker cables



Note

- Insert the stripped portion of each speaker wire into the socket completely.
- For optimal sound, use the supplied speakers only.



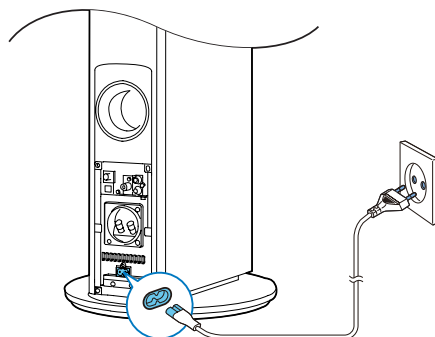
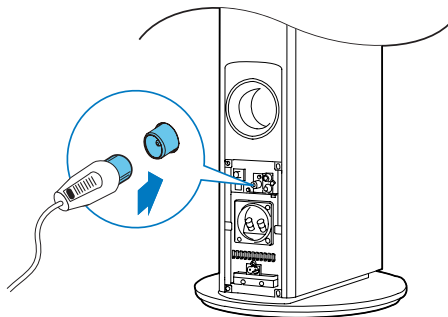
- 1 Unscrew the speaker connectors.
- 2 Insert fully the end of a speaker cable with red mark into the left red (+) connector.
- 3 Screw the left red (+) connector to secure the cable.
- 4 Insert fully the end of a speaker cable without red mark into the left black (-) connector.
- 5 Screw the left black (-) connector to secure the cable.
- 6 Repeat steps 2-5 to insert the other speaker cable into the right connectors.

Connect FM antenna



Tip

- For optimal reception, fully extend and adjust the position of the antenna.
- Connect the supplied FM antenna to the **FM AERIAL** socket on the back of the main speaker.



Prepare the remote control



Caution

- Risk of explosion! Keep batteries away from heat, sunshine, or fire. Never discard batteries in fire.

To insert the remote control battery:

- 1 Open the battery compartment.
- 2 Insert 2 AAA batteries with correct polarity (+/-) as indicated.
- 3 Close the battery compartment.

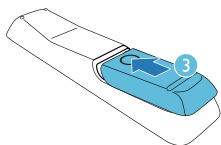
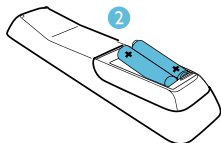
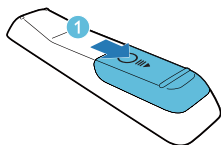
Connect power



Caution

- Risk of product damage! Ensure that the power supply voltage corresponds to the voltage printed on the back or the underside of the unit.
- Risk of electric shock! When you unplug the AC power cord, always pull the plug from the socket. Never pull the cord.
- Before connecting the AC power cord, ensure you have completed all other connections.

- Connect the power cord to:
 - the **AC~MAINS** socket on the back of the main speaker.
 - the wall outlet.



Note

- If you are not going to use the remote control for a long time, remove the batteries.
- Do not use old and new or different types of batteries in combination.
- Batteries contain chemical substances, so they should be disposed of properly.

Set clock

- 1 In standby mode, press and hold **PROG/CLOCK SET** for more than two seconds to activate clock setting mode.
↳ The 12 hour or 24 hour format is displayed.
- 2 Press **◀/▶** to select 12 hour or 24 hour format, and then press **PROG/CLOCK SET**.
↳ The hour digits are displayed and begin to blink.

- 3 Press **◀/▶** to set the hour, and then press **PROG/CLOCK SET**.
↳ The minute digits are displayed and begin to blink.
- 4 Press **◀/▶** to set the minute.
- 5 Press **PROG/CLOCK SET** to confirm.

Turn on

- Press **⏻**.
↳ The unit switches to the last selected source.

Switch to standby

- Press **⏻** again to switch the unit to standby mode.
↳ The backlight on the display panel is reduced.
↳ The clock (if set) appears on the display panel.

To switch to Eco power standby mode:

- Press and hold **⏻** for more than two seconds.
↳ The backlight on the display panel turns off.

To switch between normal standby mode and Eco power standby mode:

- Press and hold **⏻** for more than two seconds.



Note

- If no button is pressed over 15 minutes in standby mode, this unit goes to Eco power standby mode automatically.

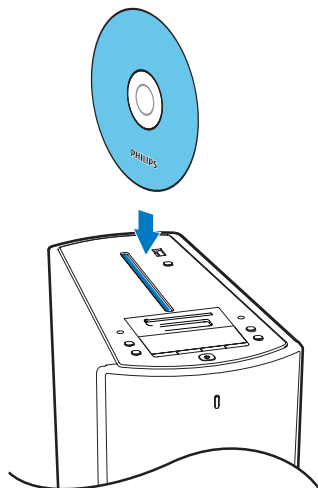
4 Play

Play from a disc

Note

- This unit is incompatible with a 8 cm disc.


- 1 Press **DISC** to select the disc source.
- 2 Insert a disc into the disc compartment with the printed side facing left.
 - ↳ The file starts playing automatically. If not, press **▶II**.
 - Press **▲** on the top of the main speaker to eject the disc out of the disc compartment.

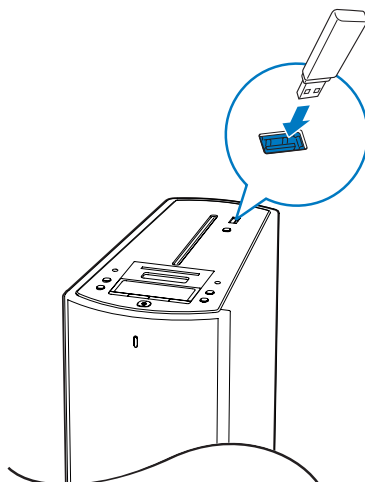


Play from USB

Note

- Make sure that the USB device contains playable audio content.

- 1 Press **USB** to select the USB source.
- 2 Insert the USB device into the  (USB) socket on the top of the main speaker.
 - ↳ The file starts playing automatically. If not, press **▶II**.



5 Play options

Pause/resume play

- During play, press ►|| to pause/resume play.

Stop play

- During play, press ■ to stop play.

Skip to a track

For CD:

- Press ◀|▶ to select another track.
 - To select a track directly, press a key on the numerical keypad.




For MP3 disc and USB:

- 1 Press **ALBUM +/- ▲ / ▼** to select an album or folder.
- 2 Press ◀|▶ to select a track or file.

Search within a track

- 1 During play, press and hold ◀◀/▶▶ to search within a track.
- 2 Release to resume normal play.

Repeat and shuffle play

- 1 During play, press **MODE/MONO/STEREO** repeatedly to select:
 -  (repeat one): The current track is played repeatedly.
 -  (repeat all): All tracks are played repeatedly.
 -  (shuffle): All tracks are played in a random sequence.

- 2 To return to normal play, press **MODE/MONO/STEREO** repeatedly until repeat/shuffle mode is no longer displayed.



Note

- The repeat and shuffle play cannot be activated at the same time.
- Shuffle play cannot be selected when you play programmed tracks.

Program tracks

You can program a maximum of 20 tracks.

- 1 In CD/USB mode, at the stop position, press **PROG/CLOCK SET** to activate the program mode.
↳ **[PROG]** (program) blinks on the display.
- 2 For MP3/WMA tracks, press **ALBUM +/- ▲ / ▼** to select an album.
- 3 Press ◀|▶ to select a track number, and then press **PROG/CLOCK SET** to confirm.
- 4 Repeat steps 2 to 3 to program more tracks.
- 5 Press ►|| to play the programmed tracks.
↳ During play, **[PROG]** (program) is displayed.
 - To erase the program, in the stop position, press ■.

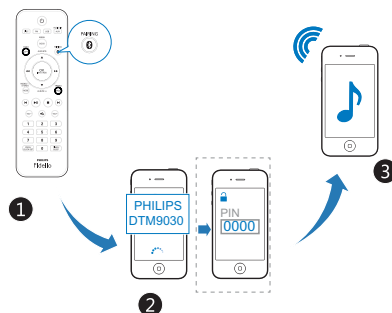
Display ID3 information

- In disc mode, during play, press **OK/INFO/RDS** to display the following information:
 - Track number
 - Play time
 - Title name
 - Artist name
 - Album name

6 Play from a Bluetooth device

Note

- Before you connect a Bluetooth-enabled device to the unit, familiarize yourself with the Bluetooth capabilities of the device.
- Keep the unit away from other electronic devices that may cause interference.
- The effective operation range between the unit and the paired device is approximately 10 meters (30 feet).
- Any obstacle between the unit and the device can reduce the operational range.



1 Press **PAIRING** **0** to select the Bluetooth source.

↳ The Bluetooth indicator flashes blue.

2 Activate the Bluetooth function on your Bluetooth device (see the device user manual).

3 Select 'PHILIPS DTM9030' on your device for pairing.

↳ The Bluetooth indicator turns solid blue.

↳ The unit beeps.

- For some devices, you may need to input "0000" as the pairing password.

4 Start music play on your Bluetooth enabled device.

Tip

- If the unit switches from Bluetooth source to other sources, the connected Bluetooth device disconnects automatically.
- The unit can memorize up to 8 previously connected Bluetooth devices.

To disconnect the Bluetooth-enabled device:

- Deactivate Bluetooth on your device; or
- Move the device beyond the communication range.

To clear Bluetooth pairing history:

- Press **BT SETUP** and hold for 3 seconds.
 - ↳ The current Bluetooth connection is disconnected.
 - ↳ After successful clearing, the Bluetooth indicator flashes blue.

7 Play iPod/iPhone

You can enjoy audio from iPod/iPhone through this unit.

Compatible iPod/iPhone

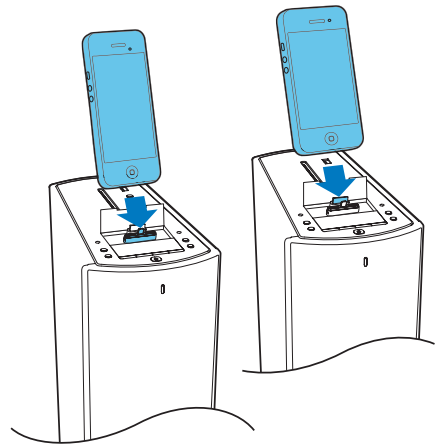
With the integrated dual docks, the unit supports the following iPod, and iPhone models:

Made for (lightning connection):

- iPhone 5
- iPod nano (7th generation)
- iPod touch (5th generation)

Also made for (30-pin connection):

- iPhone 4S
- iPhone 4
- iPhone 3GS
- iPhone 3G
- iPhone
- iPod nano (2nd/3rd/4th/5th/6th generation)
- iPod classic
- iPod touch (1st/2nd/3rd/4th generation)



Listen to the iPod/iPhone

Note

- Make sure that your iPod/iPhone has been loaded securely.

- 1 Press **DOCK/MENU** to select the dock source.
- 2 Play audio on your iPod/iPhone.
 - To navigate in the menu: press **DOCK/MENU**, and press **▲ / ▼ / ◀▶ / ▶▶** to select, and then press **OK/INFO/RDS** to confirm.
 - To pause/resume play, press **▶||**.
 - To skip to a track, press **◀| ▶|**.
 - To search during play, press and hold **◀▶ / ▶▶**, then release to resume normal play.

Load the iPod/iPhone

Note

- You can only use one dock each time.

- 1 Lift up the dock cover.
- 2 Connect your iPod/iPhone to the lightning or 30-pin dock connector.

Charge the iPod/iPhone

- When the unit is connected to power, the docked iPod/iPhone begins to charge automatically.

Remove the iPod/iPhone

- Pull the iPod/iPhone out of the dock.

8 Listen to the radio

Tune to a radio station



Tip

- For optimal FM reception, fully extend and adjust the position of the FM antenna.

- 1 Press **FM** to select the FM tuner source.
- 2 Press and hold **◀◀ / ▶▶** for more than two seconds.
 - ↳ **[SEARCH]** (search) is displayed.
 - ↳ The radio tunes to a station with strong reception automatically.
- 3 Repeat step 2 to tune to more stations.
 - To tune to a weak station, press **◀◀ / ▶▶** repeatedly until you find optimal reception.

Select stereo/mono broadcast

For stations with weak signals: to improve the reception, change to monaural sound.

- In FM tuner source, press **MODE/MONO/STEREO** to select a setting:
 - **[STEREO]**: stereo broadcast.
 - **[MONO]**: monaural broadcast.

Program radio stations



Tip

- You can program a maximum of 20 preset radio stations.

Program radio stations automatically

- In FM tuner mode, press and hold **PROG/CLOCK SET** for more than two seconds to activate automatic programming.
 - ↳ **[AUTO SRCH]**(auto search) is displayed.
 - ↳ All available stations are programmed in the order of waveband reception strength.
 - ↳ The first programmed radio station is broadcast automatically.

Program radio stations manually

- 1 Tune to a radio station.
- 2 Press **PROG/CLOCK SET** to activate program mode.
 - ↳ **[PROG]** (program) blinks on the display.
- 3 Press **◀ / ▶** to allocate a number (1 to 20) to this radio station, and then press **PROG/CLOCK SET** to confirm.
 - ↳ The preset number and the frequency of the preset station are displayed.
- 4 Repeat the above steps to program other stations.



Note

- To overwrite a programmed station, store another station in its place.

Select a preset radio station

- In FM tuner mode, press **◀ / ▶** to select a preset number.
 - You can also press the numeric key to select a preset number directly.

Display play information

Radio Data System (RDS) is a service that allows FM stations to show additional information.

- In FM tuner mode, press **OK/INFO/RDS** repeatedly to show RDS information.

9 Adjust sound

Adjust volume

- During play, press **VOL +/-** to increase/decrease the volume.

Adjust bass/treble level

- During play, press **BASS/TREBLE** repeatedly to adjust the bass/treble level.

Mute sound

- During play, press **M** to mute or restore sound.

10 Other features

Set the sleep timer

This unit switches to standby mode automatically after a set period of time.

- When the unit is turned on, press **TIMER/SLEEP** repeatedly to select a set period of time (in minutes).

When the sleep timer is activated, **SLEEP** (sleep) is displayed.

To deactivate sleep timer

- Press **TIMER/SLEEP** repeatedly **SLEEP** (sleep) disappears.

Set the alarm timer

This docking system can be used as an alarm clock. You can select CD, FM TUNER, iPod/iPhone, or USB as the alarm source.

Note

- Make sure that you have set the clock correctly.

- In standby mode, press and hold **TIMER/SLEEP** until **[SET TIMER]**(set timer) scrolls on the display.
- Press **DISC**, **USB**, **DOCK/MENU**, or **FM** to select a source.
- Press **TIMER/SLEEP** to confirm.
↳ The hour digits are displayed and begin to blink.
- Press **◀/▶** to set the hour; and then press **TIMER/SLEEP** again.
↳ The minute digits are displayed and begin to blink.

- Press **◀/▶** to set the minute.
- Press **TIMER/SLEEP** to confirm.
↳ The alarm timer is set and activated.

Note

- To exit the alarm timer setting without storing, press **■**.

Activate and deactivate the alarm timer

- In standby mode, press **TIMER/SLEEP** repeatedly to activate or deactivate the alarm timer.
↳ If the alarm timer is activated, **TIMER** (timer) is displayed
↳ If the alarm timer is deactivated, **TIMER** (timer) disappears.

Note

- If the CD/USB/DOCK source is selected, but no disc is placed or no USB/iPod/iPhone is connected, the FM TUNER is selected automatically.

Play from an external device

You can also listen to an external audio device through the unit.

Connect through the AUDIO IN socket:

- Connect a 3.5mm audio cable (not supplied) to:
 - the **AUDIO IN** socket on the back of the main speaker.
 - the headphone socket on an external audio player.
- Press **AUDIO IN/AUX** repeatedly to select the 3.5mm audio input (AUDIO_IN) source.

- 3 Start play on the external audio player and adjust volume.
↳ You can hear music from the unit.
- 4 Use the controls on your audio player to control music play.

Connect through the **OPTICAL IN** or **COAXIAL IN** socket:

- 1 Connect an optical or coaxial cable (not supplied) to:
 - the **OPTICAL IN** or **COAXIAL IN** socket on the back of the main speaker;
 - the corresponding digital output socket on an external audio device.
- 2 Press **OPT/COAX** repeatedly to select the optical or coaxial audio input source.
- 3 Start play on the external audio player and adjust volume.
↳ You can hear music from the unit.
- 4 Use the controls on your audio player to control music play.



Tip

- In the optical or coaxial audio input mode, you can adjust the audio delay time: 1) press **MODE/MONO/STEREO** to enter audio delay adjustment; 2) press **VOL +/-** to adjust the delay time between 00 ms and 200 ms.

Connect through the **AUX IN (L/R)** sockets:

- 1 Connect a pair of RCA audio cables (red/white; not supplied) to:
 - the **AUX IN (L/R)** sockets on the back of the main speaker;
 - the audio output sockets on an external audio device.
- 2 Press **AUDIO IN/AUX** repeatedly to select the RCA (red/white) audio input (AUX) source.

- 3 Start play on the external audio player and adjust volume.
↳ You can hear music from the unit.
- 4 Use the controls on your audio player to control music play.

11 Product information



Note

- Product information is subject to change without prior notice.

Specifications

Amplifier

Rated Output Power	2 × 80W RMS
Frequency Response	30Hz - 20KHz ±3dB
Signal to Noise Ratio	> 80 dB
AUDIO IN	600mV RMS 22 kohm

Disc

Laser Type	Semiconductor
Disc Diameter	12cm
Support Disc	CD-DA, CD-R, CD-RW, MP3-CD, WMA-CD
Audio DAC	24Bits / 44.1kHz
Total Harmonic Distortion	< 0.8% (1kHz)
Frequency Response	30Hz - 20kHz (44.1kHz)
S/N Ratio	> 80 dB

Tuner

Tuning Range	FM: 87.5 - 108MHz
Tuning grid	50KHz

Sensitivity

- Mono, 26dB S/N Ratio	< 22dBf
- Stereo, 46dB S/N Ratio	< 43dBf
Search Selectivity	< 28dBf
Total Harmonic Distortion	< 2%

Speakers

Speaker Impedance	6ohm + 2 × 3ohm
Speaker Driver	104mm woofer + 104mm woofer + 33mm tweeter
Sensitivity	88dB/1m/1W

Bluetooth®

Bluetooth® version	V2.1 + EDR
Frequency band	2.402-2.480 GHzISM Band
Range	10m (free space)

General information

AC power	220-240V ~ 50/60Hz
Eco Power Consumption	< 0.5W
Operation Power Consumption	40W
USB Direct	version 2.0HS
Load of USB	≤500mA
Dimensions	
- Main Unit (W × H × D)	300 × 985 × 300mm
Weight	
- With Packing	30.7kg
- Main Unit	14.11kg

USB playability information

Compatible USB devices:

- USB flash memory (USB 2.0 or USB1.1)
- USB flash players (USB 2.0 or USB1.1)
- memory cards (requires an additional card reader to work with this unit)

Supported formats:

- USB or memory file format FAT12, FAT16, FAT32 (sector size: 512 bytes)
- MP3 bit rate (data rate): 32-320 Kbps and variable bit rate
- WMA v9 or earlier
- Directory nesting up to a maximum of 8 levels
- Number of albums/ folders: maximum 99
- Number of tracks/titles: maximum 999
- ID3 tag v2.0 or later
- File name in Unicode UTF8 (maximum length: 128 bytes)

Unsupported formats:

- Empty albums: an empty album is an album that does not contain MP3/ WMA files, and will not be shown in the display.
- Unsupported file formats are skipped. For example, Word documents (.doc) or MP3 files with extension .dlf are ignored and not played.
- AAC, WAV, PCM audio files
- DRM protected WMA files (.wav, .m4a, .m4p, .mp4, .aac)
- WMA files in Lossless format

Supported MP3 disc formats

- ISO9660, Joliet
- Maximum title number: 512 (depending on file name length)
- Maximum album number: 255
- Supported sampling frequencies: 32 kHz, 44.1kHz, 48 kHz
- Supported Bit-rates: 32~256 (kbps), variable bit rates

12 Troubleshooting



Warning

- Never remove the casing of this apparatus.

To keep the warranty valid, never try to repair the system yourself.

If you encounter problems when using this unit, check the following points before requesting service. If the problem remains unsolved, go to the Philips web site (www.philips.com/support). When you contact Philips, ensure that the unit is nearby and the model number and serial number are available.

No power

- Ensure that the AC power cord of the unit is connected properly.
- Ensure that there is power at the AC outlet.
- As a power-saving feature, the system switches off automatically 15 minutes after track play reaches the end and no control is operated.

No sound or poor sound

- Adjust the volume.
- Check that the speakers are connected correctly.
- Check if the stripped speaker wires are clamped.

No response from the unit

- Disconnect and reconnect the AC power plug, then turn on the unit again.
- As a power-saving feature, the system switches off automatically 15 minutes after track play reaches the end and no control is operated.

Remote control does not work

- Before you press any function button, first select the correct source with the remote control instead of the main unit.

- Reduce the distance between the remote control and the unit.
- Insert the batteries with its polarities (+/- signs) aligned as indicated.
- Replace the batteries.
- Aim the remote control directly at the sensor on the front of the unit.

No disc detected

- Insert a disc.
- Check if the disc is inserted upside down.
- Wait until the moisture condensation at the lens has cleared.
- Replace or clean the disc.
- Use a finalized CD or correct format disc.

Cannot display some files in USB device

- The number of folders or files in the USB device has exceeded a certain limit. This phenomenon is not a malfunction.
- The formats of these files are not supported.

USB device not supported

- The USB device is incompatible with the unit. Try another one.

Poor radio reception

- Increase the distance between the unit and your TV or VCR.
- Fully extend the FM antenna.
- Connect an outdoor FM antenna instead.

Timer does not work

- Set the clock correctly.
- Switch on the timer.

Clock/timer setting erased

- Power has been interrupted or the power cord has been disconnected.
- Reset the clock/timer.

Music playback is unavailable on this unit even after successful Bluetooth connection.

- The device cannot be used to play music through this unit wirelessly.

The audio quality is poor after connection with a Bluetooth-enabled device.

- The Bluetooth reception is poor. Move the device closer to this unit or remove any obstacle between them.

Cannot connect with this unit.

- The device does not support the profiles required for this unit.
- The Bluetooth function of the device is not enabled. Refer to the user manual of the device to find out how to enable the function.
- This unit is not in pairing mode.
- This unit is already connected with another Bluetooth-enabled device. Disconnect that device and then try again.

The paired mobile device connects and disconnects constantly.

- The Bluetooth reception is poor. Move the device closer to this unit or remove any obstacle between them.
- Some mobile phones may connect and disconnect constantly when you make or end calls. This does not indicate any malfunction of this unit.
- For some devices, the Bluetooth connection may be deactivated automatically as a power-saving feature. This does not indicate any malfunction of this unit.



Specifications are subject to change without notice.
2013 © WOOX Innovations Limited. All rights reserved.
This product was brought to the market by WOOX Innovations Limited or one of its affiliates, further referred to in this document as WOOX Innovations, and is the manufacturer of the product. WOOX Innovations is the warrantor in relation to the product with which this booklet was packaged. Philips and the Philips Shield Emblem are registered trademarks of Koninklijke Philips N.V.

