

# PHILIPS



Wet & Dry electric  
shaver with SkinIQ

Shaver series 9000

Skin-level closeness

Dual SteelPrecision blades

Pressure Guard sensor

360 D Flexing heads



S9974/35

## Superior closeness\*, personalised skin comfort

For superior closeness, even on a 5-day beard

Discover the world's most intelligent shaver powered by AI, Philips Shaver Series 9000. Cuts at skin level with Lift & Cut shaving system, while SkinIQ technology gives real-time pressure feedback to protect your skin.

### A closer shave

- Cuts hair in every direction with 360-degree rotating blades
- Skin-level closeness with Lift & Cut shaving system
- Adapts to your contours with 360 degree Flexing Heads

### SkinIQ technology

- Always the optimal pressure with the Pressure Guard Sensor
- 30% smoother\*\*\* gliding with Nano SkinGlide Coating
- Adjusts to your beard density with Power Adapt Sensor

### For a convenient shave

- One-touch open for easy cleaning
- 60 minutes of cordless shaving once fully charged
- Effortless charging with convenient stand available to hand.
- Enhance your shaving experience with the Philips Shaving App
- Precision trimmer integrated in the handle

### Premium experience

## Shaver series 9000

Wet & Dry electric shaver with SkinIQ

S9974/35

# Highlights

### Lift & Cut System



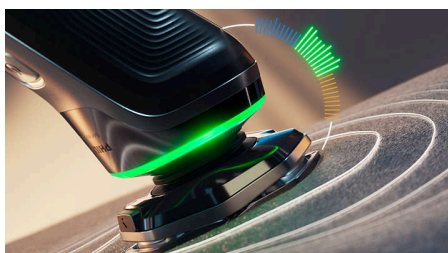
Our patented, unique Lift & Cut rotary technology lifts the hair gently out of its root before cutting it precisely at skin level close (up to 0.00 mm to the skin) without the blades even touching your skin.

### Dual SteelPrecision blades



Philips rotary shavers are specifically designed to match your natural hair growth, capturing all the hairs growing in any direction, thanks to 360-degree rotating blades. With up to 150,000 cutting actions per minute, the Dual SteelPrecision blades cut more hair per stroke\*\*.

### Pressure Guard sensor



Using the right pressure is key for closeness and skin protection. Advanced sensors in the shaver read the pressure you apply, and the innovative light signal shows when you are pressing too hard or too little. For a personalised shave that is just right for you.

### 360 D Flexing heads



Designed to follow the contours of your face and even the neck, this Philips electric shaver has fully flexible heads that turn 360 for a thorough and comfortable shave.

### Up to 5-year warranty\*\*\*\*



Our shavers are engineered for excellence and come with a 5 year warranty so you can enjoy ultimate reliability and performance, shave after shave.

### Nano SkinGlide Coating



A protective coating lies between the shaver heads and your skin. Made from up to 250,000 micro-tech beads per square centimetre, it improves gliding by up to 30%\*\*\*, to minimise irritation.

### Power Adapt sensor



The electric shaver has an intelligent facial-hair sensing technology that reads hair density 500 times per second. The Power Adapt Sensor auto-adapts the cutting power for an effortless and gentle shave.

### Personalisation via app



Perfect your shave by pairing your shaver with the Philips Shaving App\*\*\*\*. Shave by shave, track the progress of your skin, personalise your shave and master your technique for a shave that's as close as it is kind to skin.

### One-touch open



Clean the shaver with ease. At the touch of a button, flip open the shaver head and rinse with water.

## Shaver series 9000

Wet & Dry electric shaver with SkinIQ

S9974/35

# Highlights

### Wet and Dry



Adapt your shaving routine to your needs. With Wet and Dry, you can go for a comfortable dry shave or a refreshing wet shave. You can shave with gel or foam, even under the shower.

### Pop-up trimmer



Complete your look using the shaver's pop-up precision trimmer. Integrated into the shaver's body, it's the perfect way to maintain a moustache and trim sideburns.

### Sustainability



By replacing 30% of our internal plastics with recycled plastics, we are saving tons of virgin plastic in our production. On top of that, our blades are made from 80% recycled steel and produced in a factory that uses 100% renewable energy.

### Charging stand



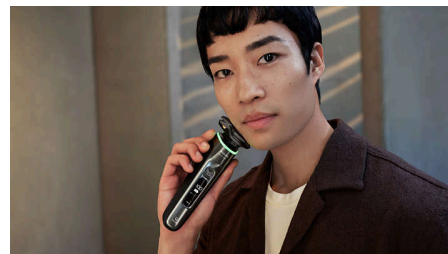
Fully charge your shaver within 1 hour in the stand. A stand created for both conveniently charging your device and neatly storing it away.

### Advanced OLED display



The first Philips shaver with a dynamic OLED display reveals every shaver feature and notification with sharp, fluid animation. The intuitive interface includes SkinIQ guidance, battery status, cleaning advice and more.

### 60 minutes of cordless shaving



This advanced charging system gives you two convenient options: 60 minutes of running time after a full charge, or a quick charge for one shave.

# Shaver series 9000

Wet & Dry electric shaver with SkinIQ

S9974/35

## Specifications

### SmartClick attachment

**Fits product type:** RQ585/51 DOES NOT fit angular head type

### Accessories

**Pouch:** Travel case

**Integrated pop-up trimmer**

### Power

**Run time:** 60 minutes

**Battery type:** Li-Ion

**Charging:** 1 hour full charge, 5-min quick charge

**Low energy mode:** < 0.3 W

**Off mode (no attachments):** < 0.1 W

### Design

**Finishing:** Timeless elegance

**Handle:** Ergonomic grip and handling

**Colour:** Dark Chrome

### Service

**2 year warranty**

**Replacement head:** Replace every 2 yrs with SH91

**2 + 3 years' warranty\*\*\*\*\***

### Shaving Performance

**Contour following:** 360 D Flexing heads

**Shaving system:** Lift & Cut System, Dual SteelPrecision blades

**SkinIQ technology:** Power Adapt sensor, Nano SkinGlide Coating, Motion Control sensor, Pressure Guard sensor

### Ease of use

**Display:** % Battery Level Indicator

**Wet & Dry:** Wet and dry use

**Cleaning:** One-touch open, Fully washable

