

Always there to help you

Register your product and get support at
www.philips.com/welcome



AD315/12



User manual

PHILIPS

Contents

1	Safety and Notice	3
	Safety	3
	Notice	3

2	Your Docking Speaker	5
	Introduction	5
	What's in the box	5
	Overview of the main unit	5

3	Get started	6
	Connect power	6
	Turn on	7

4	Play	7
	Play from iPod/iPhone	7
	Play from an external device	8
	Adjust volume	8

5	Specifications	9
	Amplifier	9
	General information	9

6	Troubleshooting	9
----------	------------------------	----------

1 Safety and Notice

Read and understand all instructions before you use this product. If damage is caused by failure to follow the instructions, the warranty does not apply.

Safety



Warning

- Never remove the casing of this apparatus.
 - Never lubricate any part of this apparatus.
 - Never look into the laser beam inside this apparatus.
 - Never place this apparatus on other electrical equipment.
 - Keep this apparatus away from direct sunlight, naked flames or heat.
 - Ensure that you always have easy access to the power cord, plug or adaptor to disconnect the apparatus from the power.
-
- The device shall not be exposed to dripping or splashing.
 - Do not place any source of danger on the device (e.g. liquid filled objects, lit candles).
 - Where the plug of the Direct Plug-in Adapter is used as the disconnect device, the disconnect device shall remain readily operable.
 - Make sure that there is enough free space around the product for ventilation.
 - Only use attachments/accessories specified by the manufacturer.
 - Only use power supplies listed in the user manual.

Notice



This product complies with the radio interference requirements of the European Community.

Any changes or modifications made to this device that are not expressly approved by Philips Consumer Lifestyle may void the user's authority to operate the equipment.



Your product is designed and manufactured with high quality materials and components, which can be recycled and reused.



When this crossed-out wheeled bin symbol is attached to a product it means that the product is covered by the European Directive 2002/96/EC.

Please inform yourself about the local separate collection system for electrical and electronic products.

Please act according to your local rules and do not dispose of your old products with your normal household waste. Correct disposal of your old product helps to prevent potential negative consequences for the environment and human health.



Your product contains batteries covered by the European Directive 2006/66/EC, which cannot be disposed with normal household waste. Please inform yourself about the local rules on separate collection of batteries because correct disposal helps to prevent

negative consequences for the environmental and human health.

Environmental information

All unnecessary packaging has been omitted.

We have tried to make the packaging easy to separate into three materials: cardboard (box), polystyrene foam (buffer) and polyethylene (bags, protective foam sheet.)

Your system consists of materials which can be recycled and reused if disassembled by a specialized company. Please observe the local regulations regarding the disposal of packaging materials, exhausted batteries and old equipment.



Be responsible
Respect copyrights

The making of unauthorized copies of copy-protected material, including computer programs, files, broadcasts and sound recordings, may be an infringement of copyrights and constitute a criminal offence. This equipment should not be used for such purposes.



"Made for iPod" and "Made for iPhone" mean that an electronic accessory has been designed to connect specifically to iPod or iPhone respectively, and has been certified by the developer to meet Apple performance standards. Apple is not responsible for the operation of this device or its compliance with safety and regulatory standards. Please note that the use of this accessory with iPod or iPhone may affect wireless performance. iPod and iPhone are trademarks of Apple Inc., registered in the U.S. and other countries. Class II equipment symbol



This symbol indicates that the apparatus has a double insulation system.



Note

- The type plate is located on the bottom of the apparatus.

2 Your Docking Speaker

Congratulations on your purchase, and welcome to Philips! To fully benefit from the support that Philips offers, register your product at www.philips.com/welcome.

Introduction

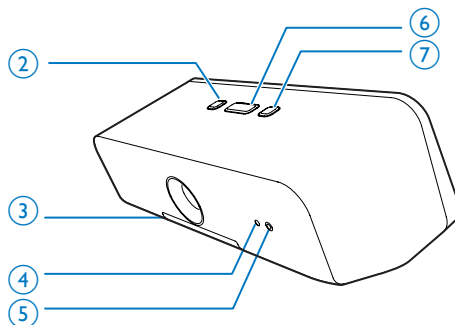
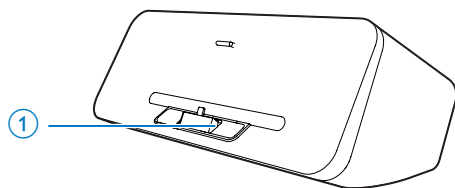
With this docking speaker, you can enjoy audio from the iPod/iPhone and other audio devices.

What's in the box

Check and identify the contents of your package:

- Main unit
- 1 x AC adaptor
- Short user manual
- Safety sheet

Overview of the main unit



- ① iPod/iPhone dock
- ② • Turn on/off the unit.
- ③ **Battery compartment**
- ④ **DC IN**
 - Power supply socket.
- ⑤ **AUDIO IN**
 - Connect an external audio device.
- ⑥ **VOLUME**
 - Adjust volume.
- ⑦ • Play/pause.

3 Get started



Caution

- Use of controls or adjustments or performance of procedures other than herein may result in hazardous radiation exposure or other unsafe operation.

Always follow the instructions in this chapter in sequence.

If you contact Philips, you will be asked for the model and serial number of this apparatus. The model number and serial number are on the bottom of the apparatus. Write the numbers here:

Model No. _____

Serial No. _____

Connect power

This docking speaker can be powered by either AC power or batteries.

Option 1: AC power

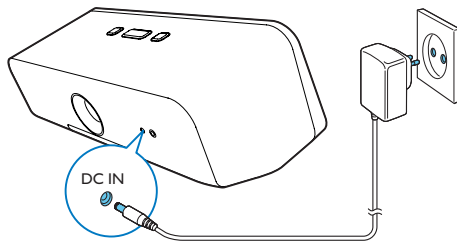


Caution

- Risk of product damage! Make sure that the power supply voltage matches the voltage printed on the bottom of the unit.
- Risk of electric shock! When you unplug the AC adaptor; always pull the plug from the socket. Never pull the cord.

Connect the AC power adaptor to:

- the power socket at the back of the docking speaker;
- the wall socket.



Option 2: Battery power



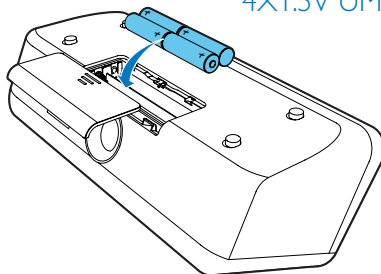
Caution

- Risk of explosion! Keep batteries away from heat, sunshine or fire. Never discard batteries in fire.
- Remove batteries if they are exhausted or will not be used for a long time.
- Batteries contain chemical substances, so they should be disposed of properly.

Open the battery compartment.

- 1 Insert 4 x 1.5V AA batteries with correct polarity (+/-) as indicated.
- 2 Close the battery compartment.

4X1.5V UM3/LR6



Turn on

Press ϕ to turn the docking speaker on.

↳ The LED indicators light up.

Switch to standby mode

The docking speaker switches to standby mode in the following situation:

- Press ϕ again;
- The speaker is idle for 15 minutes when powered by AC supply.

↳ The LED indicators light off.

4 Play

Play from iPod/iPhone

You can enjoy audio from your iPod/iPhone through this docking speaker.

Compatible iPod/iPhone

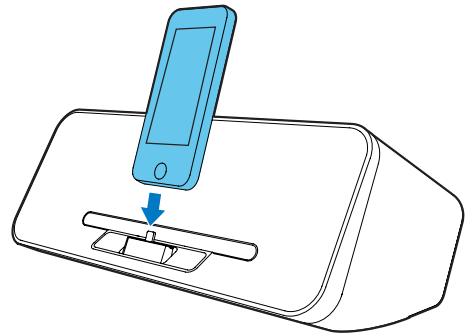
The docking speaker supports the following iPod and iPhone models:

Made for:

- iPod touch (5th generation)
- iPod nano (7th generation)
- iPhone 5

Listen to the iPod/iPhone

- 1 Press ϕ to turn the docking speaker on.
↳ The LED indicators light up.
- 2 Insert the iPod/iPhone into the dock.



- 3 Play audio on your iPod/iPhone.
↳ Audio comes out through this docking speaker.

Charge the iPod/iPhone

Note

- If the docking speaker is operated on the batteries, you cannot charge your iPod/iPhone.


When the docking speaker is connected to AC power, the docked iPod/iPhone begins to charge.

Play from an external device

With this docking speaker, you can also enjoy audio from an external device such as an MP3 player:

Note

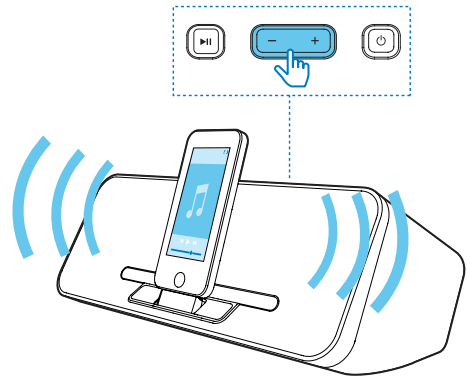
- Make sure that there is no audio detected from docking connector in the speaker.
- If the audio source does not change to the external device automatically, check the cable connection and increase the output volume of the device to try again.

- 1 Press  to turn the docking speaker on.
- 2 Connect the MP3 link cable (not supplied) to:
 - the **AUDIO-IN** socket at the back of the docking speaker.
 - the headphone socket on an external device.
- 3 Play audio on the device (see the device's user manual).

Adjust volume

To adjust volume:

- Press +/- on your docking speaker; or
- Adjust the volume control of your iPod/iPhone or external device.



5 Specifications


Amplifier

Rated Output Power	2 X 4 W RMS
--------------------	-------------

General information

Power supply	Model:
- AC Power	KSAS0151200150HE;
- Battery	Input: 100-240 V ~, 50/60Hz, 0.4A;
	Output: 5.9 V = 2 A
	4 x AA batteries
Operation Power Consumption	<10.5 W
Standby Power Consumption	<0.5 W
Max. load for iPod/iPhone	5 V = 1 A
Dimensions	300 x 119 x 164 mm
- Main Unit (W x H x D)	
Weight	1.45 kg
- Main Unit	

6 Troubleshooting

**Warning**

- Never remove the casing of this apparatus.

To keep the warranty valid, never try to repair the system yourself.

If you encounter problems when using this apparatus, check the following points before requesting service. If the problem remains unsolved, go to the Philips web site (www.philips.com/welcome). When you contact Philips, ensure that the apparatus is nearby and the model number and serial number are available.

No power

- Make sure that the docking speaker is fully charged.
- Make sure that the AC power plug of the unit is connected properly.
- Make sure that there is power at the AC outlet.

No sound

- Adjust the volume.

No response from the unit

- Disconnect and reconnect the AC power plug, then turn on the docking speaker again.



Specifications are subject to change without notice
© 2013 Koninklijke Philips Electronics N.V.
All rights reserved.

AD315_12_UM_V1.0

