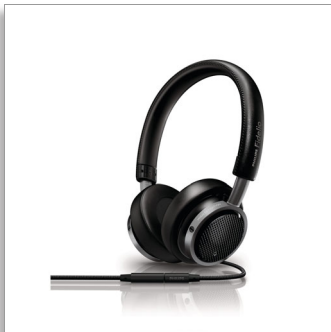




Philips Fidelio  
on-ear headband  
headphones

**Fidelio**

Black



M1

## High fidelity, premium quality. Wherever you go.

Philips Fidelio M1 combines the very best in sound and comfort for an authentic music experience on the move. Expertly engineered for superb noise isolation in a light yet sturdy design, enjoy true high definition sound wherever you go.

### Capture every detail

- High power neodymium drivers for true-to-original sound
- Acoustic closed-back architecture for best noise isolation
- Bass Reflex System for clear, dynamic and balanced bass
- Acoustically sealed construction keeps sound details in
- Double-layered ear shells engineered for sound precision
- Speakers carefully tested for the best balance in sound
- Frequency response tuned to discerning listeners' preference

### Designed for immersion

- Deluxe breathable ear pads and memory foam for optimal fit

### Quality finish for enhanced performance

- Premium materials including aluminium and fine leathers
- Oxygen-free, fabric-lined cable ensures high quality signal

### Equipped for convenience

- In-line mic with pick-up button and a pouch included

**PHILIPS**  
**Fidelio**

sense **and** simplicity

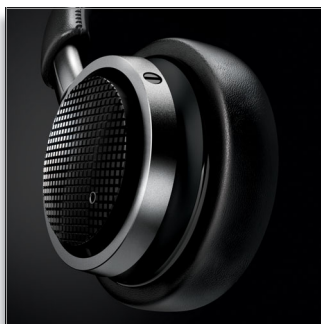
# Highlights

## Acoustic seal



The acoustic seal is a specially designed ribbon lock that's built into the internal chamber to eliminate any unnecessary sound leakage and preserve sound details. The result is excellent bass extension.

## Bass Reflex System (BRS)



The acoustic closed-back architecture features a Bass Reflex System that comprises ear shells with strategically placed vents. These regulate the air pressure within the internal chamber, providing the diaphragm with a controlled environment for optimal acoustic response. Working in conjunction with the acoustic seal capture, it isolates every natural sound detail and delivers precise and dynamic bass without compromising on sound clarity.

## Double-layered ear shells



The M1's double-layered ear shells are engineered to reduce resonance and to dampen vibration for genuinely precise and clean sound, so you hear every superb sound detail. The solid, layered construction ensures durability and comfort, making the M1 an ideal music companion for a long time to come.

## High definition speakers



Each speaker driver is carefully hand picked, tuned and tested before being paired to ensure the most balanced natural sound. The 40 mm drivers utilise high power neodymium magnets to deliver true high definition sound in a wide dynamic range, reproducing even the most minute details.

## Tuned frequency response

Extensive research was done with discerning music-lovers to gain insight to their listening preferences, for example, the balance of sound characteristics that they favoured. Our acoustics engineers then tuned the Fidelio M1 to account for all the minute details that affect how listeners discern sound, such as how the ear reflects sound and resonates in response. As a result, our M1 headphones are engineered to reproduce sound that is as faithful to the original recording as possible—including current recording styles.

## Deluxe breathable ear pads



The materials used for the Fidelio M1 are carefully selected to ensure long-wearing comfort and enhanced sound performance. Deluxe breathable ear pads with memory foam are designed for optimal ergonomic fit. Not only does the foam mould itself perfectly to the shape of your ear, it also seals in bass sounds while keeping out ambient noise. This is designed with the outer cushion—using a balanced proportion of fabric and protein leather—to reduce ear surface pressure and heat build-up, so that the M1 feels and sounds excellent.

# Specifications

## Sound

- Frequency response: 15 - 24,000 Hz
- Impedance: 16 Ohm
- Sensitivity: 106 dB
- Speaker diameter: 40 mm
- Maximum power input: 150 mW
- Distortion: < 0.1% THD
- WBCV: 111 mV

## Connectivity

- Cable Connection: Oxygen free cable (1.1 m)
- Compatible with: iPhone®, BlackBerry®, HTC, LG, MOTOROLA, Nokia\*, SAMSUNG\*. \*Extra connector available through customer support for Sony Ericsson, older models from NOKIA and SAMSUNG

## Accessories

- Storage pouch
- Audio cable: with mic and pick-up button

## Packaging dimensions

- Packaging dimensions (W x H x D):  
19.5 x 25 x 8 cm
- Packaging dimensions (W x H x D):  
7.7 x 9.8 x 3.1 inch
- Net weight: 0.205 kg
- Net weight: 0.452 lb

- Gross weight: 0.66 kg
- Gross weight: 1.455 lb
- Tare weight: 0.455 kg
- Tare weight: 1.003 lb
- EAN: 69 23410 71581 1
- Number of products included: 1
- Packaging type: Soother
- Type of shelf placement: Soother

## Outer Carton

- Outer carton (L x W x H): 20 x 16.9 x 26.5 cm
- Outer carton (L x W x H): 7.9 x 6.7 x 10.4 inch
- Net weight: 0.410 kg
- Net weight: 0.904 lb
- Gross weight: 1.542 kg
- Gross weight: 3.400 lb
- Tare weight: 1.132 kg
- Tare weight: 2.496 lb
- GTIN: 1 69 23410 71581 8
- Number of consumer packages: 2

## Product dimensions

- Product dimensions (W x H x D):  
6.5 x 7.1 x 1.7 inch
- Product dimensions (W x H x D):  
16.4 x 18 x 4.2 cm
- Weight: 0.166 kg
- Weight: 0.366 lb



Issue date 2013-01-30

Version: 9.14.10

12 NC: 8670 000 86618  
EAN: 69 23410 71581 1

© 2013 Koninklijke Philips Electronics N.V.  
All Rights reserved.

Specifications are subject to change without notice.  
Trademarks are the property of Koninklijke Philips  
Electronics N.V. or their respective owners.

[www.philips.com](http://www.philips.com)

