

Quick start guide

- A Connect/Setup
- B Enjoy
- C FAQ



PHILIPS

A Connect/Setup

Setting up connection between the Center and Station

1 The first time you set up a Wi-Fi connection, place the Center and Station side by side on a flat and firm surface

2 Connect WACS7000 to a power supply – connect the Center first followed by the Station Center/Station:

- The screen lights up in a few seconds
- Auto installation/connection starts
- The **HD** screen appears if the Station is connected to the Center (it takes about 1-2 minutes).

3 Relocate the Center and Station as desired:

- Press and hold the **STANDBY-ON/ECO POWER** button for 5 seconds to switch the Center to power-saving mode.
- Unplug the Center or Station and power them up in your preferred rooms
- You will be able to stream* the hard disk music between the Center and Station

IMPORTANT!

- Avoid installing in between thick walls. Separating the Center and Station by 2 or more walls may cause poor streaming connection.
- For better Wi-Fi reception, you can adjust the Wi-Fi antenna, or adjust the location of the Center and Station (e.g. shorten the distance between the Center and Station).
- indicates maximum reception; indicates minimum reception
- For wall mounting, please refer to the **User Manual 16.1 How to mount your Center and Station onto walls**. You may need assistance from a qualified service personnel.

* Streaming is the process in which data (music in this case) is transferred from one device to another device or many other devices.

B₁ Enjoy

Play Harddisk (HD)

You can centrally store up to 1500 audio CDs in the 80GB hard disk on the Center

1 To switch on the Center, press **STANDBY-ON/ECO POWER**

2 Press **SOURCE** once or more times to select **HD** source (or press **HARDDISK** on the remote control)

3 Use the navigation controls to select your playback options (*Demo tracks are stored under All tracks*)

4 Press to start playback

5 To change your playback option,

- Press once or more to enter previous option lists
- Use the navigation controls to select
- Press **OK** or to confirm

6 To stop playback, press **STOP** /

Tips:

By default, the 2-way remote control works with the Center only.

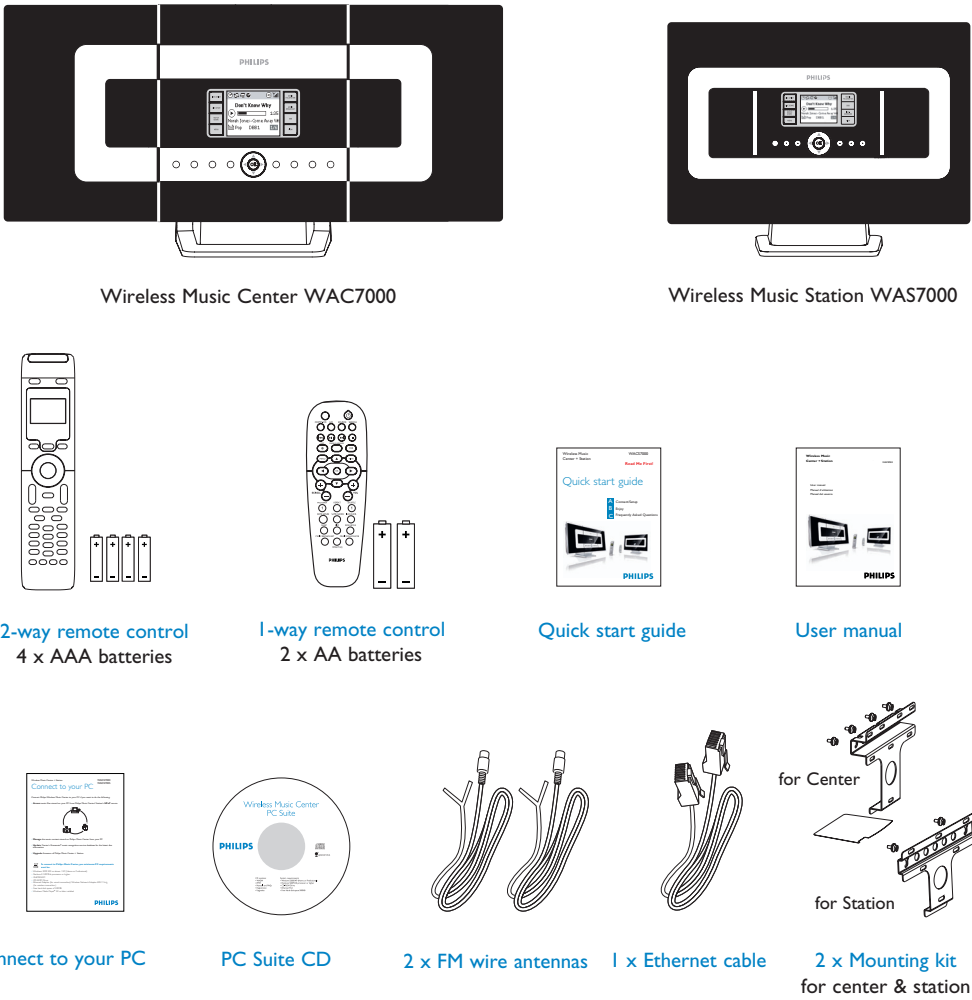
To operate the Station using the 2-way remote control,

- Press and hold **REFRESH** until the **Select Device** screen appears on the display of the remote control for the Center
- Press the navigation controls to select the **Station** checkbox, and then press **OK**

For more information, see User Manual, **4.2 Using the remote control**.

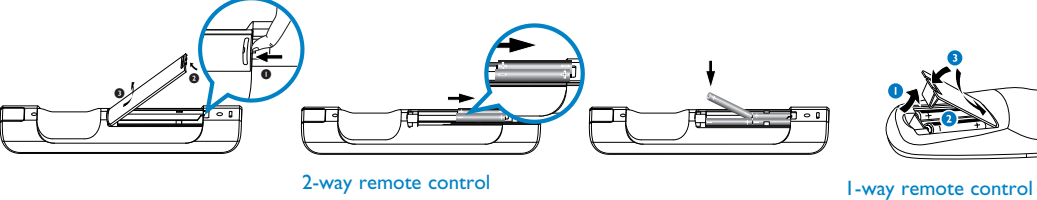
* Available storage space for music is around 75GB, due to capacity reserved for system purpose

What's in the box



Before using the remote control:

- Insert batteries into the remote control as shown



B₂ Building a music library on the Center

Build your music library on the hard disk in the Center by Recording from CDs, Importing MP3/WMA files from PC or Recording from Radio or external source.

Recording from CDs

1 Insert a CD into the CD loader on the Center, with the graphic printed side of the CD facing you

- Display shows **Reading CD**
- List of CD tracks appears

(For CD recorded with MP3/WMA music files: To enter a track list, press on a highlighted file folder)

2 In the track list screen, press **RECORD**

- List of tracks with checkboxes appears

3 To start recording the whole CD, press **RECORD**. (To rip part of the CD, press or **MARK-UNMARK** to select/deselect the tracks to be recorded, and then press **RECORD**. To select/deselect all tracks, press and hold **MARK-UNMARK**)

- CD-Rec** appears. Display shows the album name of the track being recorded
- Center will return to **CD** mode when recording is complete

4 To record from another CD, repeat Steps 1 to 3 above

IMPORTANT!

- It takes some time to convert the recorded CD music to MP3 files.
- Always press and hold **STANDBY-ON** to switch the set to **ECO POWER** (power-saving mode) before removing its power plug.
- To record from Radio or external source, see **User Manual 6.5 Building music library on Center**.
- You can edit the track information and import MP3/WMA files from PC using the supplied **Wireless Audio Device Manager(WADM)**. For details, see the manual **Connect to your PC**.
- WAC7000 Center allows you to check if the current CD information can be found in the latest Gracenote® music recognition service database via the Internet. For details, see **User Manual 12 Gracenote CD Information**

B₃ Search for your desired tracks/albums

Search by keywords

The keyword should be the first letter or first word of the title of the track you wish to search for. By inputting a keyword, you can quickly find all the items containing the word.

1 Use the navigation controls to enter the desired option list under tracks, albums, artists or playlists

2 Press **SEARCH** on the remote control

- A text box appears

3

- Press the **alphanumeric keys** repeatedly to input the keywords (maximum 8 characters)
- To delete the entry before cursor, press
- Press or to move the cursor backward / forward

4 Press **OK** to start searching

- Display shows: **Searching ...** Searching starts from the beginning of the current option list
- The matched items appear at the front of the list

B4 Stream music between the Center and Station

MUSIC FOLLOWS ME

As you move around at home, let music move with you, either from the **Center** to **Station** or from **Station** to **Center**.

1

On the source unit (Center or Station) where the music is playing

- On **HD** source, select and play the album or playlist you wish to play on the destination unit
- Press **MUSIC FOLLOWS ME** to activate
 - The ➔ icon appears

2

On the destination unit (Center or Station) where the music will continue

- Check that the destination unit is switched on or is already in standby mode
- Press **MUSIC FOLLOWS ME**
 - Selected music continues on the destination unit
 - On the source unit, the music stops. The ➔ icon disappears
- To stop MUSIC FOLLOWS ME, press **STOP** ■

Tips:

- Always press **MUSIC FOLLOWS ME** on the source unit before pressing **MUSIC FOLLOWS ME** on the destination unit.
- MUSIC FOLLOWS ME** will be automatically deactivated if you do not press **MUSIC FOLLOWS ME** on the destination unit within 5 minutes
- After **MUSIC FOLLOWS ME** is activated on the destination unit, you can select other tracks or source for playback on the source unit.


B5 Stream music between the Center and Station

MUSIC BROADCAST

MUSIC BROADCAST allows you to broadcast music from the **Center** to the **Stations**.

1

On the Center

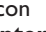
- On **HD** source, select and play the album or playlist you wish to broadcast to the Stations
- Press **MUSIC BROADCAST** to activate
 - The  icon appears on the Center and Station. a 5-second countdown starts

2

On the Center and all Stations

- Selected music starts to play simultaneously

Tips:

- Check that the Stations are switched on or are already in standby mode.
- To broadcast again**
Before you press **MUSIC BROADCAST**, check if you need to deactivate any earlier broadcasting. If the icon  is still active in the Center or Station's display, press **STOP** ■ on the **Center**. Then, follow Steps 1 to 2 mentioned above.
- Other functions are unavailable during **MUSIC BROADCAST**.
- To exit **MUSIC BROADCAST** on a Station, press **MUSIC BROADCAST MODE** mode, the navigation controls.
- In **MUSIC FOLLOW ME** or **MUSIC BROADCAST** mode, the navigation controls, **SAME ARTIST**, **SAME GENRE** and **VIEW** buttons do not function. The LCD will display the following message:

Function selected is not available

B7 Listen to FM Radio

1

Connect the supplied FM wire antenna to the Center and Station (see **User manual 3.Installation**)

2

Press **SOURCE** once or more times to select **Radio**

3

- press **MENU**
- Press ▲ or ▼ and ► to select **Autostore radio**
 - The display shows: **Autostore Please wait...**
After all available stations are stored, the first autostored preset station will play automatically
 - You can store up to 60 preset radio stations in the memory (including a maximum of 10 RDS stations).

4

- press ◀ to enter the list of preset stations
- Use the navigation controls ▲ or ▼ followed by ► to select the desired station

To find out more about product's features and how to activate them, please read the supplied manual:

- User manual:** for further details and troubleshooting
- Connect to your PC:** to connect to your PC, transfer and manage your music collection using the **Philips Wireless Audio Device Manager** (supplied), set up networks, and playback music between the Center/Station and UPnP-enabled device

C1 FAQ Most Frequently Asked Questions

About the Environment

Q: Is there a maximum distance of transmission between Philips Wireless Music Center and Stations for effective streaming?

A: Yes. The maximum distance of Wi-Fi transmission is 250m measured in open spaces. However, in a home environment, there solid obstacles such as walls and doors are present, the effective transmission distance is significantly reduced to approximately 50 -100m. Try to re-position the sets if you experience transmission problems.

Q: Do I need a computer or home network to use Philips Wireless Music Center and Station?

A: No. Philips Wireless Music Center and Station are designed to work independent of the computer. You can record music from CDs to the music library of the Center's (hard disk), and stream music to the Stations without any computer or home networking structure.

Q: Would my neighbours be able to access the music I stored on Philips Wireless Music Center if they also have Philips Wireless Music Station?

A: No. Every Philips Wireless Music Station has a unique encryption code that will only be recognized by the Philips Wireless Music Center during the installation process.

About Recording from CDs/ Track Information

Q: What does "Recording from CDs" mean and what functions can I use while the recording is in progress?

A: "Recording from CDs" is the process by which a CD track is converted into the much smaller MP3 format, and is then added to the Wireless Music Center's music library (hard disk). On the Wireless Music Center, "Recording from CDs" requires two steps: first, it reads the CD content and store it temporarily on the hard disk; Then, it converts this temporary CD content into MP3 format - a process called "background-encoding". It takes 1 hour to convert 1 hour of CD music. During this stage you cannot stream or broadcast music on the Center, though you can still stream music from the Stations. Always switch the set to ECO POWER (power-saving mode) before removing its power plug.

Q: Do I need to immediately update the Gracenote music recognition database stored in Philips Wireless Music Center straight after bringing it home?

A: No. There is already a massive CD-tracks database pre-stored in Philips Wireless Music Center, which should match most of the CDs released within the last six months.

Q: Does Philips provide Gracenote music recognition database updates?


A: Yes. We provide quarterly updates of the Gracenote music recognition database through the website <http://www.club.philips.com>. Download the file to your PC and update the built-in Gracenote music recognition database from the PC using WADM in the supplied PC suite. Or you can burn the downloaded file on a CD and insert the CD into the CD loader on the Center for update.

B6 Play or record to USB mass storage devices

Play music from USB devices


You can use USB flash memory (USB 2.0 or USB1.1) and USB flash players (USB 2.0 or USB1.1) with the Center or Station.

1

Insert the USB plug of the USB device into the socket  on the Center or Station

2

Press **SOURCE** once or more times to select **USB**

- The icon  appears
- List of music tracks appears

3

Use the navigation controls ▲ ▼ ◀ ▶ to select your playback options

4

Press ►||/OK to start playback

Transfer music to USB devices

1

Check that the USB device is properly connected to the Center. Press **SOURCE** to enter **HD** mode

2

Press the navigation controls ▲ or ▼ and ► to select your option and enter its corresponding list of tracks (if necessary)

3

Press **RECORD**, then press **MARK-UNMARK** to select or deselect the tracks to be recorded. (To select/deselect all tracks, press and hold **MARK-UNMARK**)

4

- Press **RECORD** to start recording.
- The display shows **transferring ...**. The number of tracks transferred/ to be transferred appears
 - Transferred tracks are saved under MUSIC in the USB device

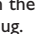
C2 FAQ Most Frequently Asked Questions

About Music Management

Q: What is Philips Wireless Audio Device Manager (WADM)?

A: WADM mainly serves to transfer your PC's music library to the Wireless Music Center. In addition, it provides a one-stop solution to help you manage the music library on the Center music library, such as edit track information, create/rename playlists, backup/restore music library in the Center, as well as network setting, Gracenote music recognition update, Firmware upgrade. For details, see the manual Connect to your PC and WADM help file.

Q: How do I transfer the MP3/WMA files of my PC's music library to Philips Wireless Music Center

A: Once you have installed Philips Wireless Audio Device Manager (WADM) and connected your PC to the Philips Wireless Music Center with the supplied Ethernet cable, you can use this software to drag and drop music files from your PC to the "device window" of WADM. Transfer of track will start automatically and the average time it takes to transfer one track is 4-15 seconds. Always press and hold **STANDBY-ON**  to switch the set to ECO POWER (power-saving mode) before removing its power plug.

Q: Is Philips Wireless Music Center and Station upgradeable?

A: Yes, Philips Wireless Music Center and Station are software upgradeable, which means that they are ready for future functional upgrades if available. Check our website regularly for the latest news on new features and improvements at <http://www.philips.com/support>

Need help?
www.philips.com/support
or
call our helpdesk

Country	Helpdesk	Tariff / min	Keep ready
österreich	0820 901115	€0,20	Das Kaufdatum, Modellnummer und Seriennummer
Belgique	070 253 010	€0,17	La date d'achat la référence et le numéro de série du produit
Canada	1-800-661-6162 (Francophone) 1-888-744-5477 (English / Spanish)	Free	Date of Purchase, Model number and Serial number
Danmark	3525 8761	Local tariff	Forbrugeren's indkøbsdato, type/model-og serienummer
Suomi	09 2290 1908	Local tariff	Ostopäivä ja tarkka mallinnumero ja sarjanumero
France	08 9165 0006	€0,23	La date d'achat la référence et le numéro de série du produit
Deutschland	0180 5 007 532	€0,20	Das Kaufdatum, Modellnummer und Seriennummer
Ελλάδα	0 0800 3122 1223	Free	Την ημερομηνία αγοράς και Τον ακριβή κωδικό μοντέλου και Τον αριθμό σειράς του προϊόντος σας
Ireland	01 601 1161	Local tariff	Date of Purchase, Model number and Serial number
Italia	199 404 042	€0,21	La data di acquisto, numero di modello e numero di serie
Luxembourg	26 84 30 00	Local tariff	La data d'achat, la référence et le numéro de série du produit
Nederland	0900 0400 063	€0,20	De datum van aankoop, modelnummer en serienummer
Norge	2270 8250	Local tariff	Datoen da du kjøpte produktet & modellnummer & serienummeret
Portugal	2 1359 1440	Local tariff	A data de compra, número do modelo e número de série
España	902 888 785	€0,15	Fecha de compra e número del modelo e número de serie
Sverige	08 632 0016	Local tariff	Inköpsdatum, modellnummer och serienummer
Schweiz	02 2310 2116	Local tariff	Das Kaufdatum und Modellnummer und Seriennummer
UK	0906 1010 017	£0,15	Date of Purchase, Model number and Serial number
USA	1-888-744-5477	Free	Date of Purchase, Model number and Serial number



© Royal Philips Electronics N.V. 2007
All rights reserved.
3141 075 21663 
www.philips.com

