

# Always there to help you

Register your product and get support at  
[www.philips.com/support](http://www.philips.com/support)



HTL1193B



# User manual

# PHILIPS

# Contents

---

<b>1</b>	<b>Important</b>	2
	Help and support	2
	Safety	2
	Care for your product	3
	Care of the environment	3
	Compliance	4

---

<b>2</b>	<b>Your product</b>	4
	Main unit	4
	Remote control	5
	Connectors	6

---

<b>3</b>	<b>Connect</b>	6
	Placement	6
	Connect audio from TV and other devices	7

---

<b>4</b>	<b>Use your product</b>	8
	Adjust the volume	8
	Choose your sound	8
	MP3 player	8
	USB storage devices	9
	Play music via Bluetooth	9
	Auto standby	10
	Apply factory settings	10
	Radio	10

---

<b>5</b>	<b>Update software</b>	11
	Check software version	11
	Update software via USB	11

---

<b>6</b>	<b>Wall mount</b>	12
----------	-------------------	----

---

<b>7</b>	<b>Product specifications</b>	13
----------	-------------------------------	----

---

<b>8</b>	<b>Troubleshooting</b>	14
----------	------------------------	----

# 1 Important

Read and understand all instructions before you use your product. If damage is caused by failure to follow instructions, the warranty does not apply.

---

## Help and support

For extensive online support, visit [www.philips.com/support](http://www.philips.com/support) to:

- download the user manual and the quick start guide
- watch video tutorials (available only for selected models)
- find answers to frequently answered questions (FAQs)
- email us a question
- chat with our support representative.

Follow the instructions on the website to select your language, and then enter your product model number.

Alternatively, you can contact Consumer Care in your country. Before you contact, note down the model number and serial number of your product. You can find this information on the back or bottom of your product.

---

## Safety

### Risk of electric shock or fire!

- Before you make or change any connections, make sure that all devices are disconnected from the power outlet.
- Never expose the product and accessories to rain or water. Never place liquid containers, such as vases, near the product. If liquids are spilt on or into the product, disconnect it from the power outlet immediately. Contact Consumer Care to have the product checked before use.

- Never place the product and accessories near naked flames or other heat sources, including direct sunlight.
- Never insert objects into the ventilation slots or other openings on the product.
- Where the mains plug or an appliance coupler is used as the disconnect device, the disconnect device shall remain readily operable.
- Batteries (battery pack or batteries installed) shall not be exposed to excessive heat such as sunshine, fire or the like.
- Disconnect the product from the power outlet before lightning storms.
- When you disconnect the power cord, always pull the plug, never the cable.

### Risk of short circuit or fire!

- For identification and supply ratings, see the type plate at the back or bottom of the product.
- Before you connect the product to the power outlet, ensure that the power voltage matches the value printed on the back or bottom of the product. Never connect the product to the power outlet if the voltage is different.

### Risk of injury or damage to this product!

- For wall mounting, this product must be securely attached to the wall in accordance with the installation instructions. Use only the supplied wall mount bracket (if available). Improper wall mounting may result in accident, injury or damage. If you have any query, contact Consumer Care in your country.
- Never place the product or any objects on power cords or on other electrical equipment.
- If the product is transported in temperatures below 5°C, unpack the product and wait until its temperature matches room temperature before connecting it to the power outlet.
- Parts of this product can be made of glass. Handle with care to avoid injury and damage.

### Risk of overheating!

- Never install this product in a confined space. Always leave a space of at least four inches around the product for ventilation. Ensure curtains or other objects never cover the ventilation slots on the product.

### Risk of contamination!

- Do not mix batteries (old and new or carbon and alkaline, etc.).
- Danger of explosion if batteries are incorrectly replaced. Replace only with the same or equivalent type.
- Remove batteries if they are exhausted or if the remote control is not to be used for a long time.
- Batteries contain chemical substances, they should be disposed of properly.

### Risk of swallowing batteries!

- The product/remote control may contain a coin/button type battery, which can be swallowed. Keep the battery out of reach of children at all times! If swallowed, the battery can cause serious injury or death. Severe internal burns can occur within two hours of ingestion.
- If you suspect that a battery has been swallowed or placed inside any part of the body, seek immediate medical attention.
- When you change the batteries, always keep all new and used batteries out of reach of children. Ensure that the battery compartment is completely secure after you replace the battery.
- If the battery compartment cannot be completely secured, discontinue use of the product. Keep out of reach of children and contact the manufacturer.



This is CLASS II apparatus with double insulation, and no protective earth provided.

---

## Care for your product

Use only microfiber cloth to clean the product.

---

## Care of the environment

### Disposal of your old product and battery



Your product is designed and manufactured with high quality materials and components, which can be recycled and reused.



This symbol on a product means that the product is covered by European Directive 2012/19/EU.



This symbol means that the product contains batteries covered by European Directive 2013/56/EU which cannot be disposed of with normal household waste.

Inform yourself about the local separate collection system for electrical and electronic products and batteries. Follow local rules and never dispose of the product and batteries with normal household waste. Correct disposal of old products and batteries helps prevent negative consequences for the environment and human health.

### Removing the disposable batteries

To remove the disposable batteries, see battery installation section.

---

## Compliance

This product complies with the radio interference requirements of the European Community.

Hereby, Gibson Innovations declares that this product is in compliance with the essential requirements and other relevant provisions of Directive 2014/53/EU. You can find the Declaration of Conformity on [www.p4c.philips.com](http://www.p4c.philips.com).

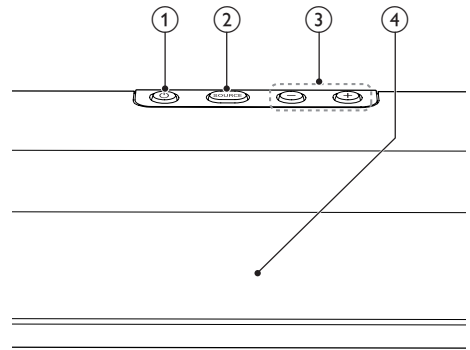
## 2 Your product


Congratulations on your purchase, and welcome to Philips! To fully benefit from the support that Philips offers, register your product at [www.philips.com/welcome](http://www.philips.com/welcome).

---

### Main unit

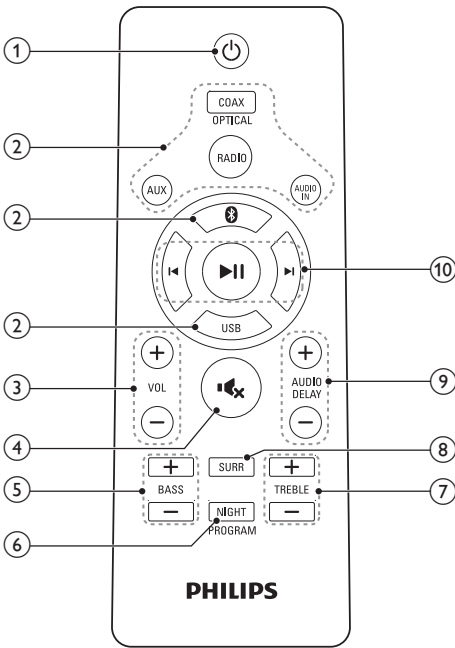
This section includes an overview of the main unit.



- ①  Switch this product on or to standby.
- ② **SOURCE**  
Select an input source for this product.
- ③ **Volume+/-**  
Increase or decrease volume.
- ④ **Display panel**

# Remote control

This section includes an overview of the remote control.



① **⏻ (Standby-On)**

Switch the main unit on or to standby.

② **Source buttons**

- **COAX / OPTICAL:** Switch your audio source to the coaxial connection, or to the optical connection.
- **RADIO:** Switch to radio mode.
- **AUX:** Switch your audio source to the AUX connection.
- **AUDIO IN:** Switch your audio source to the MP3 connection (3.5mm jack).
- **Ⓚ:** Switch to Bluetooth mode.
- **USB:** Switch your audio source to the USB connection.

③ **VOL +/-**

- Increase or decrease volume.

④ **🔇**

Mute or restore volume.

⑤ **BASS +/-**

Increase or decrease bass.

⑥ **NIGHT / PROGRAM**

- Turn night mode on or off.
- In radio mode, press and hold for three seconds to reinstall the radio stations.

⑦ **TREBLE +/-**

Increase or decrease treble.

⑧ **SURR**

Toggle between stereo and virtual surround sound.

⑨ **AUDIO DELAY +/-**

Applicable to **COAXIAL (COAX)** and **OPTICAL (OPT)** sources only. Increase or decrease audio delay.

⑩ **For USB and Bluetooth mode**

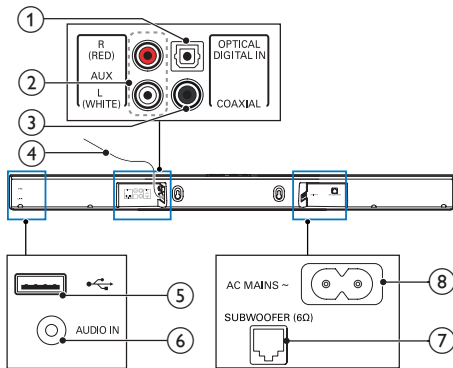
- **▶||**: Start, pause or resume play.
- **◀|** / **|▶**: Skip to the previous or next track.


**For radio mode**

- Press **▶||** to toggle display between the current preset number and frequency.
- When the preset number is displayed, press **◀|** / **|▶** to select a preset radio station.
- When the radio frequency is displayed, press and hold **◀|** / **|▶** to search a radio station, or press briefly **◀|** / **|▶** to fine tune a radio frequency.

## Connectors

This section includes an overview of the connectors available on this product.



- ① **DIGITAL IN-OPTICAL**  
Connect to an optical audio output on the TV or a digital device.
- ② **AUX**  
Connect to an analog audio output on the TV or an analog device.
- ③ **COAXIAL**  
Connect to a coaxial audio output on the TV or a digital device.
- ④ **FM antenna**  
Extend the FM antenna for better reception.
- ⑤   
Connect to a USB storage device for audio media play.
- ⑥ **AUDIO IN**  
Audio input from, for example, an MP3 player (3.5mm jack).
- ⑦ **SUBWOOFER**  
Connect to the supplied subwoofer.
- ⑧ **AC MAINS~**  
Connect to the power supply.

## 3 Connect

This section helps you connect this product to a TV and other devices.

For information about the basic connections of this product and accessories, see the quick start guide.

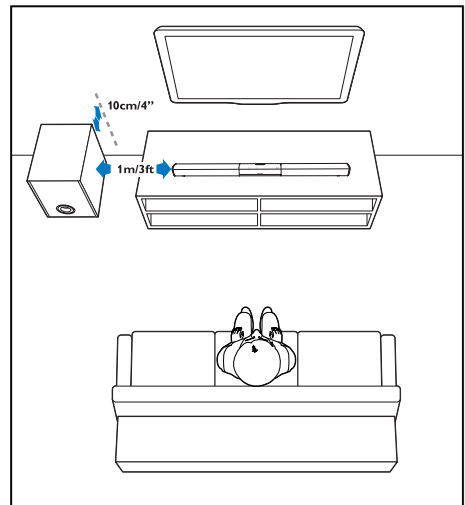
### Note

- For identification and supply ratings, see the type plate at the back or bottom of the product.
- Before you make or change any connections, make sure that all devices are disconnected from the power outlet.

## Placement

Place the subwoofer at least 1 meter (3 feet) away from this product, and ten centimeters away from the wall.

For best results, place your subwoofer as shown below.



---

## Connect audio from TV and other devices

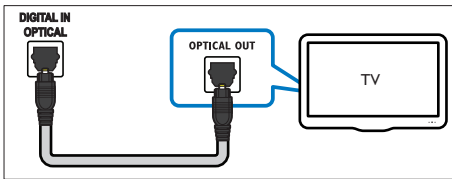
Play audio from TV or other devices through this product.

Use the best quality connection available on your TV and other devices.

---

### Option 1: Connect audio through a digital optical cable

Best quality audio

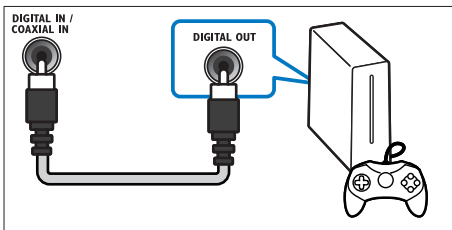


- 1 Using an optical cable, connect the **OPTICAL** connector on this product to the **OPTICAL OUT** connector on the TV or other device.
  - The digital optical connector might be labeled **SPDIF** or **SPDIF OUT**.

---

### Option 2: Connect audio through a digital coaxial cable

Best quality audio

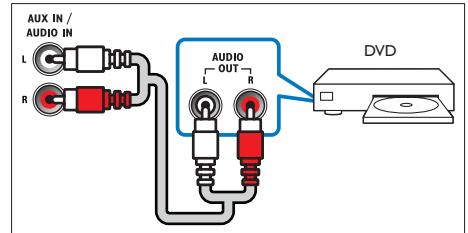


- 1 Using a coaxial cable, connect the **COAXIAL** connector on this product to the **COAXIAL/DIGITAL OUT** connector on the TV or other device.
  - The digital coaxial connector might be labeled **DIGITAL AUDIO OUT**.

---

### Option 3: Connect audio through analog audio cables

Basic quality audio



- 1 Using an analog cable, connect the **AUX** connectors on this product to the **AUDIO OUT** connectors on the TV or other device.



# 4 Use your product

This section helps you use this product to play audio from connected devices.

## Before you start

- Make the necessary connections described in the Quick Start Guide or download the User Manual from [www.philips.com/support](http://www.philips.com/support).
- Switch this product to the correct source for other devices.

---

## Adjust the volume

- 1 Press **VOL +/-** to increase or decrease a volume level.
  - To mute sound, press **MUTE**.
  - To restore the sound, press **MUTE** again or press **VOL +/-**.

---

## Choose your sound

This section helps you choose the ideal sound for your video or music.

---

## Surround sound mode

Experience an immersive audio experience with surround sound modes.

- 1 Press **SURR** to toggle between virtual surround and stereo.
  - ↳ When virtual surround is turned on, **ON SURR** scrolls on the display panel.
  - ↳ When stereo sound is turned on, **OFF SURR** scrolls on the display panel.

---

## Equalizer

Change the high frequency (treble) and low frequency (bass) settings of this product.

- 1 Press **TREBLE +/-** or **BASS +/-** to change the treble or bass.

---

## Synchronize video and sound

If the audio and video are not synchronized, delay the audio to match the video.

- 1 Press **AUDIO DELAY +/-** to synchronize the audio with the video.
  - **AUDIO DELAY +** increases the sound delay, and **AUDIO DELAY -** decreases the sound delay.

---

### Note

- This feature is only applicable to **COAXIAL (COAX)** and **OPTICAL (OPT)** sources.

---

## Night mode

For quiet listening, night mode decreases the volume of loud sounds when audio is played. Night mode is only available for Dolby Digital soundtracks.

- 1 Press **NIGHT** to turn night mode on or off.
  - ↳ When night mode is turned on, **ON NIGHT** scrolls on the display panel.
  - ↳ When night mode is turned off, **OFF NIGHT** scrolls on the display panel.

---

## MP3 player

Connect your MP3 player to play your audio files or music.

### What you need

- An MP3 player.
- A 3.5mm stereo audio cable.

- 1 Using the 3.5mm stereo audio cable, connect the MP3 player to the **AUDIO IN** connector on this product.
- 2 Press **AUDIO IN**.

- 3 Press the buttons on the MP3 player to select and play audio files or music.
  - On the MP3 player, it is recommended to set the volume in the range of 80% maximum volume.

---



## USB storage devices

Enjoy audio on a USB storage device, such as an MP3 player and USB flash memory, etc.

### What you need

- A USB storage device that is formatted for FAT or NTFS file systems, and complies with the Mass Storage Class.
- An MP3 file on a USB storage device

- 1 Connect a USB storage device to this product.
- 2 Press **USB** on the remote control.
- 3 Use the remote control to control play.

Button	Action
	Start or pause or resume play.
	Skip to the previous or next track.
<b>USB</b>	During play, press to toggle: repeat one track and repeat off. <ul style="list-style-type: none"> <li>• If repeat mode is turned on, <b>ONE RPT</b> scrolls on the display panel.</li> <li>• If repeat mode is turned off, <b>OFF RPT</b> scrolls on the display panel.</li> </ul>

### Note

- This product may not be compatible with certain types of USB storage device.
- If you use a USB extension cable, USB HUB, or USB multi-reader; the USB storage device may not be recognized.
- Digital camera PTP and MTP protocols are not supported.
- Do not remove the USB storage device while it is being read.
- DRM-protected music files (MP3) are not supported.
- Support a USB port: 5V ---, 1A.


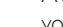
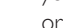
---

## Play music via Bluetooth

Through Bluetooth, connect your product with a Bluetooth device (such as an iPad, iPhone, iPod touch, Android phone, or laptop), and then you can listen to the audio files stored on the device through the speakers of this product.

### What you need

- A Bluetooth device which supports Bluetooth profile A2DP, and with Bluetooth version as 2.1.
- The operational range between the main unit and a Bluetooth device is approximately 10 meters (30 feet).

- 1 Press  on the remote control to switch this product to Bluetooth mode.
  - ↳ **BT** is displayed on the display panel, blinking.
- 2 On the Bluetooth device, switch on Bluetooth, search for and select **Philips HTL1193B** to start connection (see the user manual of the Bluetooth device on how to enable Bluetooth).
  - ↳ During connection, **BT** on the display panel blinks.
- 3 Wait until this product beeps.
  - ↳ When the Bluetooth connection succeeds, **BT** is displayed on the display panel.
  - ↳ If the connection fails, **BT** on the display panel blinks continuously.
- 4 Select and play audio files or music on your Bluetooth device.
  - During play, if a call is coming, music play is paused.
  - If your Bluetooth device supports AVRCP profile, on the remote control you can press  to skip to a track, or press  to pause/resume play.
- 5 To exit Bluetooth, select other source.
  - When your switch back to Bluetooth mode, Bluetooth connection remains active.

## Note

- The music streaming may be interrupted by obstacles between the device and this product, such as wall, metallic casing that covers the device, or other devices nearby that operate in the same frequency.
- If you want to connect this product with another Bluetooth device, press and hold **0** on the remote control to break the current Bluetooth connection.

## Auto standby

When playing media from a connected device, this product automatically switches to standby after 15 minutes of button inactivity and no audio play from a connected device.

## Apply factory settings

You can reset this product to the default setting mode.

- 1 In mute mode, quickly press **AUX** two times.
  - ↳ The factory settings is restored.

## Radio

Listen to FM radio on this product, and store up to 40 radio stations.

## Note

- Position the antenna as far as possible from TV or other sources of radiation.
- For optimal reception, fully extend and adjust the position of the antenna.
- AM and digital radio are not supported.
- If no stereo signal is detected, you are prompted to install the radio stations again.

## Auto install radio stations

- 1 Press **RADIO** to switch to radio source.
  - ↳ If you have not installed any radio stations, the message **AUTO INSTALL** (auto install) scrolls on the display panel.
- 2 Press **▶||** to install radio stations.
  - ↳ **RADIO INSTALL** (radio install) scrolls on the display panel.
  - ↳ This product automatically stores radio stations with sufficient signal strength.
  - To clear all the existing radio stations, press and hold **PROGRAM** for 3 seconds to reinstall the radio stations.

## Select a preset radio station

- 1 In radio mode, display a preset number (press **▶||**).
- 2 Press **◀|** / **|▶** to select a preset number.
  - Press **RADIO** to toggle between the stereo and mono sound.

## Tune to a radio station

- 1 In radio mode, display a radio frequency (press **▶||**).
- 2 Press and hold **◀|** / **|▶** for more than 2 seconds.
  - ↳ The radio tunes to a station with strong reception reception automatically.
- 3 Repeat step 2 to tune to more stations.
  - To fine tune a radio frequency, press briefly **◀|** / **|▶**.

## Program radio stations manually

- 1 Tune to a radio station.
- 2 Display the current radio frequency (press **▶||**).

- 3 Press briefly **PROGRAM**.  
↳ a number blinks on the display panel.
- 4 Press **◀/▶** to allocate a number to this station.
- 5 Press **▶||** to confirm.
- 6 Repeat the above steps to program other stations.

---

### Delete a preset station

- 1 In radio mode, display a preset number (press **▶||**).
- 2 Press **PROGRAM**.
- 3 Press **◀/▶** to select a preset number.
- 4 Press **▶||** to delete the radio station.  
↳ When the radio station is deleted, **DEL** is displayed briefly.

---

### Tuning grid

In some countries, you can toggle the FM tuning grid between 50 kHz and 100 kHz.

- 1 Press **RADIO** to switch to radio source.
- 2 Press and hold **▶||** to toggle between 50 kHz or 100 kHz.

## 5 Update software

To get the best features and support, update your product with the latest software.

---


### Check software version

In mute mode (press **⏏**), quickly press **AUX** twice.

- ↳ The current software of this product is displayed for 3 seconds, and then the factory setting is restored.

---

### Update software via USB

- 1 Check the latest software version on [www.philips.com/support](http://www.philips.com/support).
  - Search for your model and click on "Software and drivers".
- 2 Download the software into a USB flash drive.
  - ① Unzip the download if zipped, and make sure that the unzipped file is named "HTL1193.BIN".
  - ② Put the "HTL1193.BIN" file in the root directory of the USB flash drive.
- 3 Switch this product to **AUDIO IN** source (press **AUDIO IN**).
- 4 Connect the USB storage device to the  (**USB**) connector on this product.
- 5 Switch this product to **AUX** source, and then switch this product to **USB** source.
- 6 Wait until the update starts and completes.

↳ When the update starts, "UPG" (upgrade) is displayed on the display panel.

↳ If the update is complete, this product automatically turns off and on again.



### Caution

- Do not turn off the power or remove the USB storage device when the software update is in progress because you might damage this product.

## 6 Wall mount

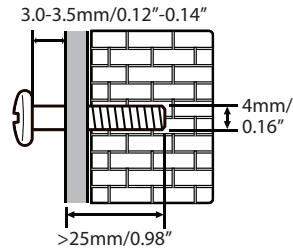


### Note

- Before wall mounting, make sure the wall can support the weight of this product.
- For wall mounting, this product must be securely attached to the wall in accordance with the installation instructions. Improper wall mounting may result in accident, injury or damage. If you have any query, contact Consumer Care in your country.

### Screw length/diameter

Depending on the type of wall mounting this product, make sure that you use screws of a suitable length and diameter.



See the illustration in the quick start guide on how to wall mount this product.

- 1) Drill two holes on the wall.
- 2) Secure the dowels and screws in the holes.
- 3) Hang this product on the fastening screws.

# 7 Product specifications

## Note

- Specifications and design are subject to change without notice.

## Amplifier

- RMS total output power: 80W RMS (+/- 0.5 dB, 10% THD)
- Frequency response: 40 Hz-20 kHz / +/-3 dB
- Signal-to-noise ratio: > 65 dB (CCIR) / (A-weighted)
- Total Harmonic Distortion: <1%
- Input sensitivity:
  - AUX: 2Vrms +/- 100mV
  - AUDIO IN: 1Vrms +/- 100mV

## Audio

- S/PDIF Digital audio input:
  - Coaxial: IEC 60958-3
  - Optical: TOSLINK
- Sampling frequency:
  - MP3: 8 kHz, 11 kHz, 12 kHz, 16 kHz, 22 kHz, 24 kHz, 32 kHz, 44.1 kHz, 48 kHz
- Constant bit rate:
  - MP3: 8 kbps-320 kbps

## Radio

- Tuning range: FM 87.5-108 MHz (50/100 kHz)
- Tuning grid: 50/100 kHz
- Sensitivity
  - Mono, 26dB S/N Ratio:  $\leq 22$  dBf
  - Stereo, 46dB S/N Ratio:  $\geq 48$  dBf
- Search Selectivity:  $\leq 32$  dBf
- Total Harmonic Distortion: <3%
- Signal to Noise Ratio:  $\geq 45$  dB

## USB

- Compatibility: Hi-Speed USB (2.0)
- Class support: USB Mass Storage Class (MSC)
- File system: FAT16, FAT32, NTFS
- Supports MP3 file formats

## Bluetooth

- Bluetooth profiles: A2DP, AVRCP
- Bluetooth version: 2.1
- Frequency band/Output power: 2400 - 2483.5 MHz /  $\leq 20$  dBm

## Main unit

- Power supply: 100-240 V~, 50/60 Hz
- Power consumption: 35 W
- Standby power consumption:  $\leq 0.5$  W
- Dimensions (W x H x D): 865 x 67.8 x 85.5 mm
- Weight: 1.8 kg
- **Built-in speakers:** 4 x full range (54.5 mm/2", 6 ohm)

## Subwoofer

- Impedance: 6 ohm
- Speaker drivers: 1 x 134 mm (5.25") woofer
- Dimensions (W x H x D): 160 x 228 x 295 mm
- Weight: 2.5 kg

## Remote control batteries

- 1 x AAA-R03-1.5 V

## Standby information

- When the product remains inactive for 15 minutes, it automatically switches to standby or networked standby.
- The power consumption in standby or networked standby is less than 0.5W.
- To deactivate Bluetooth connection, press and hold the Bluetooth button on the remote control.
- To activate Bluetooth connection, enable Bluetooth connection on your Bluetooth device, or enable Bluetooth connection via the NFC tag (if available).

# 8 Troubleshooting



## Warning

- Risk of electric shock. Never remove the casing of the product.

To keep the warranty valid, never try to repair the product yourself.

If you have problems using this product, check the following points before you request service. If you still have a problem, get support at [www.philips.com/support](http://www.philips.com/support).

---

## Main unit

### The buttons on this product do not work.

- Disconnect this product from the power supply for a few minutes, then reconnect.

---

## Sound

### No sound from the speakers of this product.

- Connect the audio cable from this product to your TV or other devices.
- Make sure that you connect the audio input on this product to the audio output on your TV or other devices.
- Reset this product to its factory settings.
- On the remote control, select the correct audio input.
- Make sure that this product is not muted.

### Audio and video are not synchronized.

- Press **AUDIO DELAY +/-** to synchronize the audio with the video.

### Distorted sound or echo.

- If you play audio from the TV through this product, make sure that the TV is muted.

---

## Bluetooth

### A device cannot connect with this product.

- The device does not support the compatible profiles required for this product.
- You have not enabled the Bluetooth function of the device. See the user manual of the device on how to enable the function.
- The device is not correctly connected. Connect the device correctly. (see 'Play music via Bluetooth' on page 9)
- This product is already connected with another Bluetooth device. Disconnect the connected device, then try again.

### Quality of audio play from a connected Bluetooth device is poor.

- The Bluetooth reception is poor: Move the device closer to this product, or remove any obstacle between the device and this product.

### The connected Bluetooth device connects and disconnects constantly.

- The Bluetooth reception is poor: Move the device closer to this product, or remove any obstacle between the device and this product.
- Turn off Wi-Fi function on the Bluetooth device to avoid interference.
- For some Bluetooth, the Bluetooth connection can be deactivated automatically to save power. This does not indicate any malfunction of this product.



Manufactured under license from Dolby Laboratories. Dolby and the double-D symbol are trademarks of Dolby Laboratories.



The Bluetooth® word mark and logos are registered trademarks owned by Bluetooth SIG, Inc. and any use of such marks by Gibson Innovations Limited is under license. Other trademarks and trade names are those of their respective owners.





Specifications are subject to change without notice

Copyright © 2015 Gibson Innovations Limited, Revised Edition © 2017

This product has been manufactured by, and is sold under the responsibility of Gibson Innovations Ltd., and Gibson Innovations Ltd. is the warrantor in relation to this product. Philips and the Philips Shield Emblem are registered trademarks of Koninklijke Philips N.V. and are used under license.

HTL1193B\_98\_UM\_V4.0

