

Question?
Contact
Philips



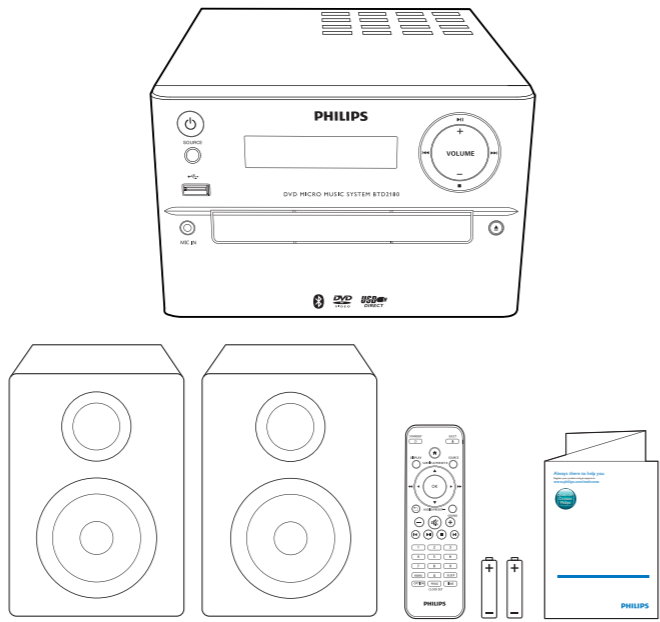
EN Short User Manual
ZH-CN 简明用户手册

PHILIPS



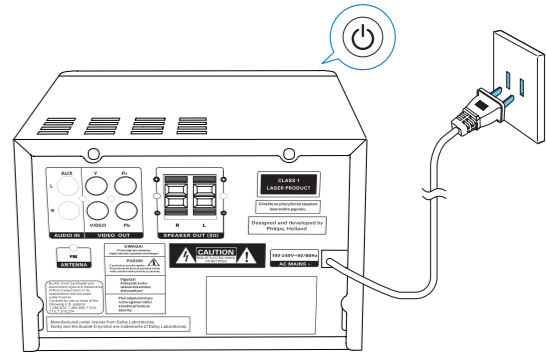
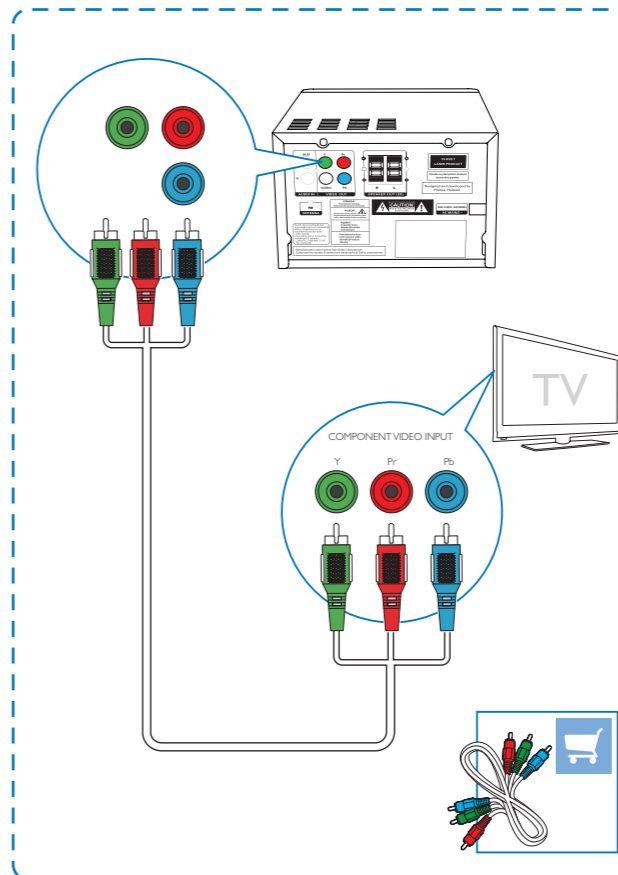
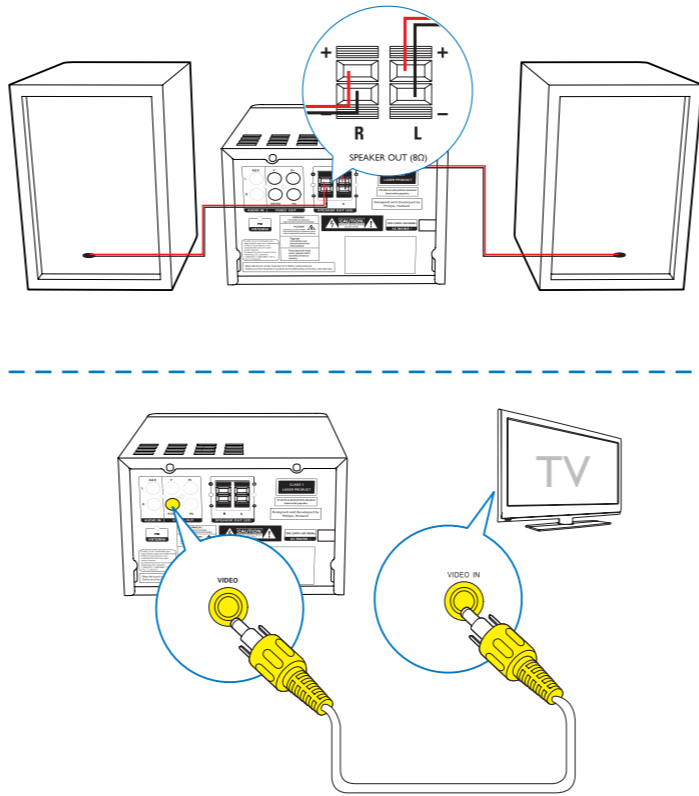
All registered and unregistered trademarks are property of their respective owners.
© 2013 Koninklijke Philips Electronics N.V.
All rights reserved.

BTD2180_93_Short User Manual_V1.0



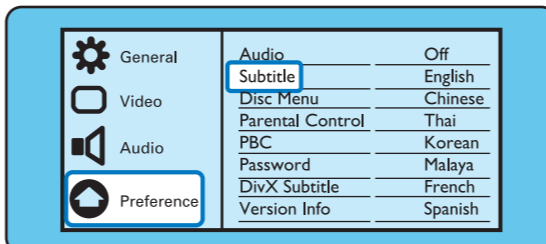
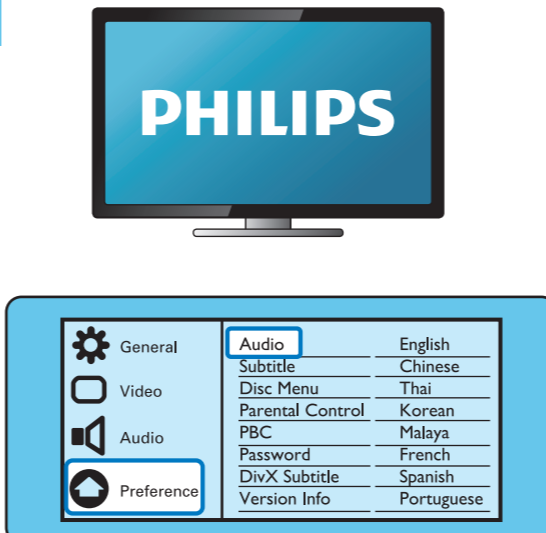
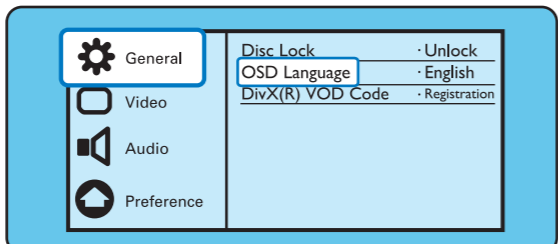
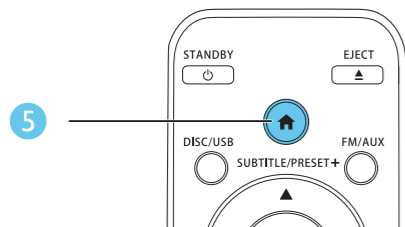
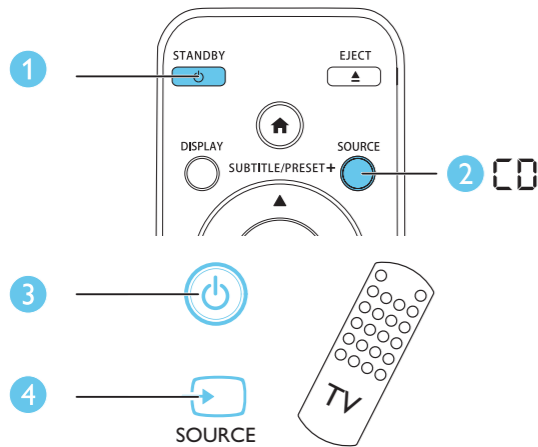
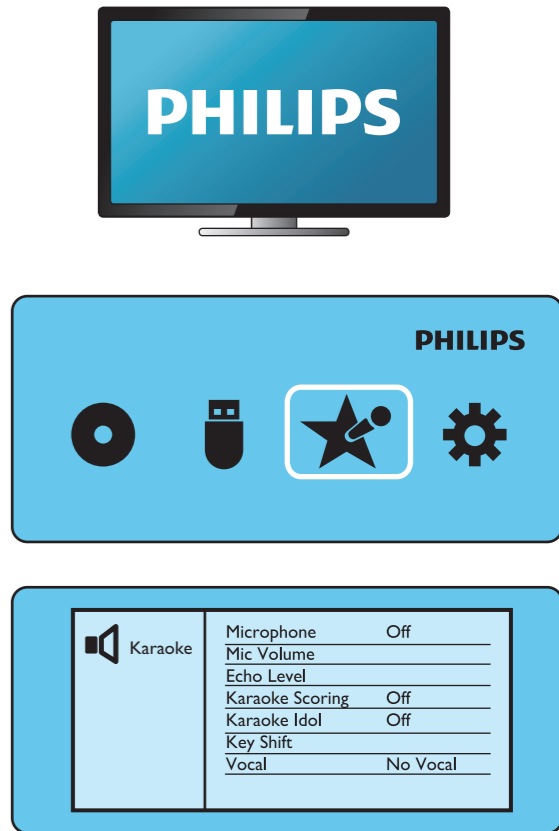
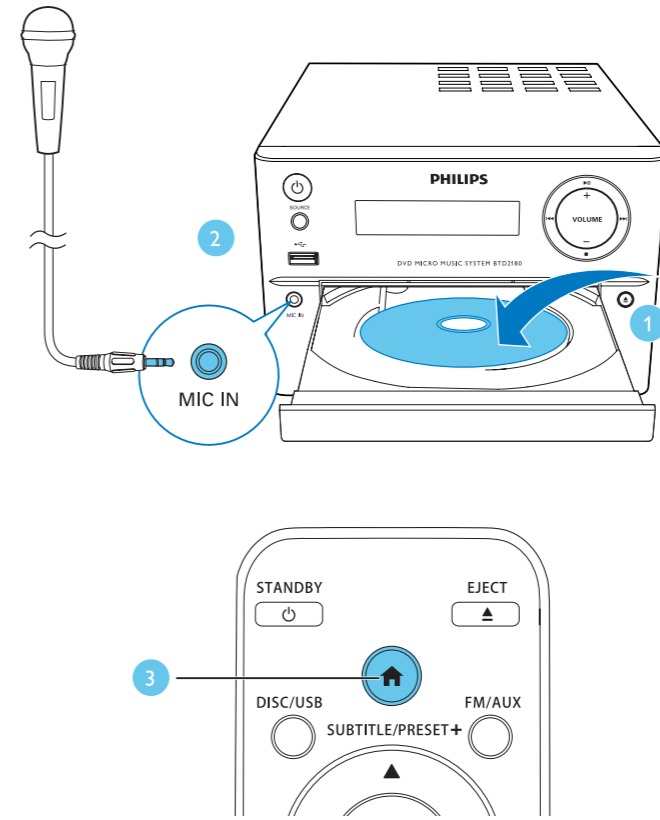
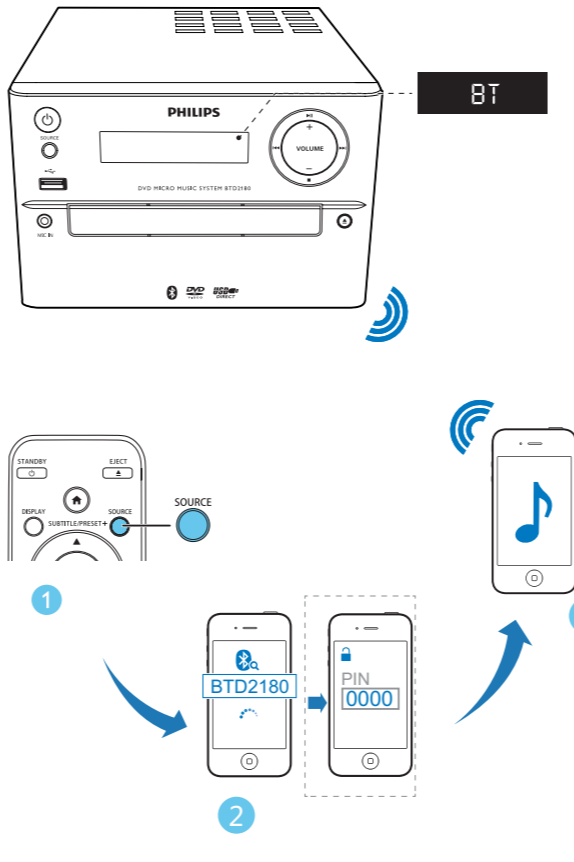
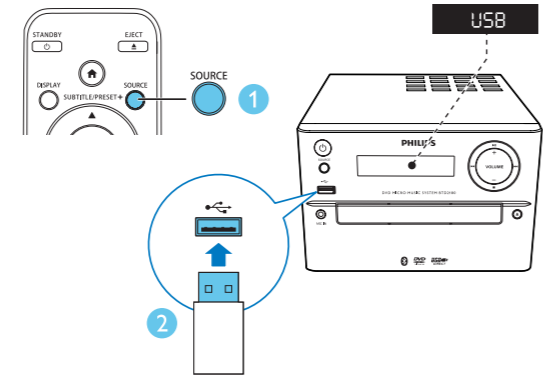
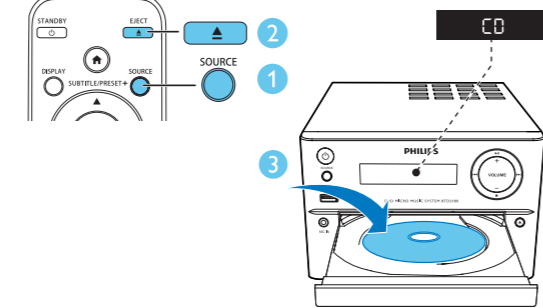
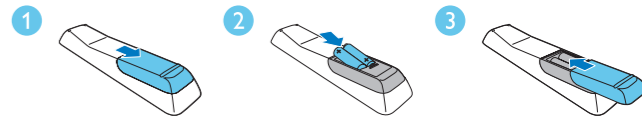
Before using your product, read all accompanying safety information.

使用产品之前，请先阅读所有随附的安全信息。



Switch to standby mode
切换至待机模式

Switch to ECO standby mode
切换至环保待机模式



Control play

▲/▼	Select a folder.
◀/▶(◀◀/▶▶)	Fast backward/forward.
◀/▶	Skip to the previous or next title/chapter/track/file.
⏸	Pause or resume play.
■	Stop play.
+/-	Increase or decrease volume.
⏶	Mute or restore sound.
SOUND	Enrich sound effect with DSC: balanced, clear, powerful, warm, and bright.
DISPLAY	View playback information.

控制播放

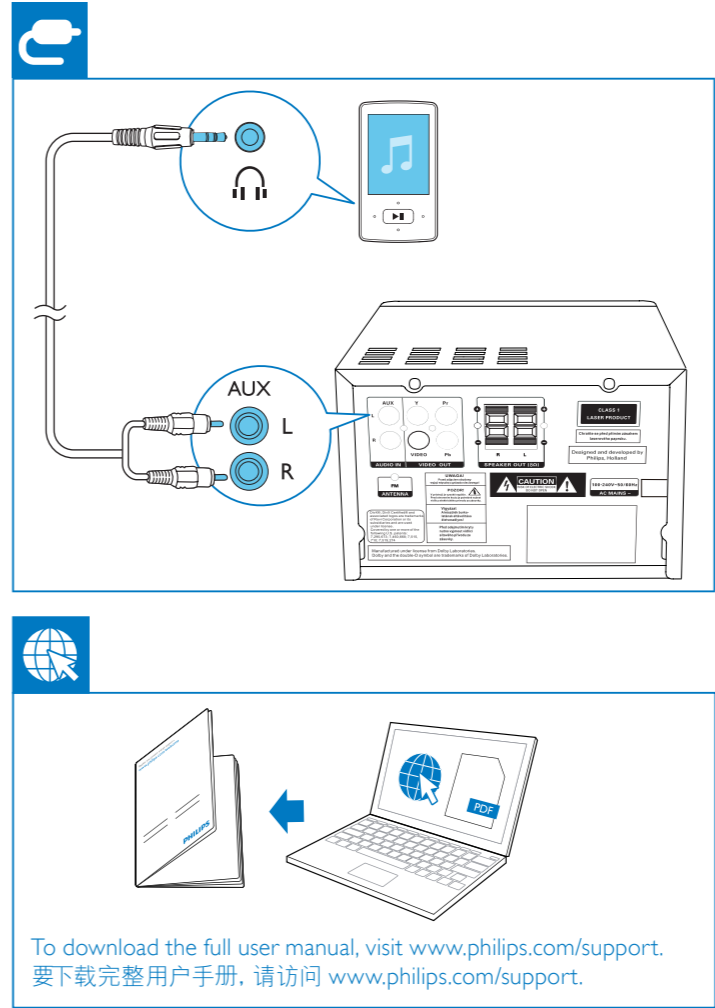
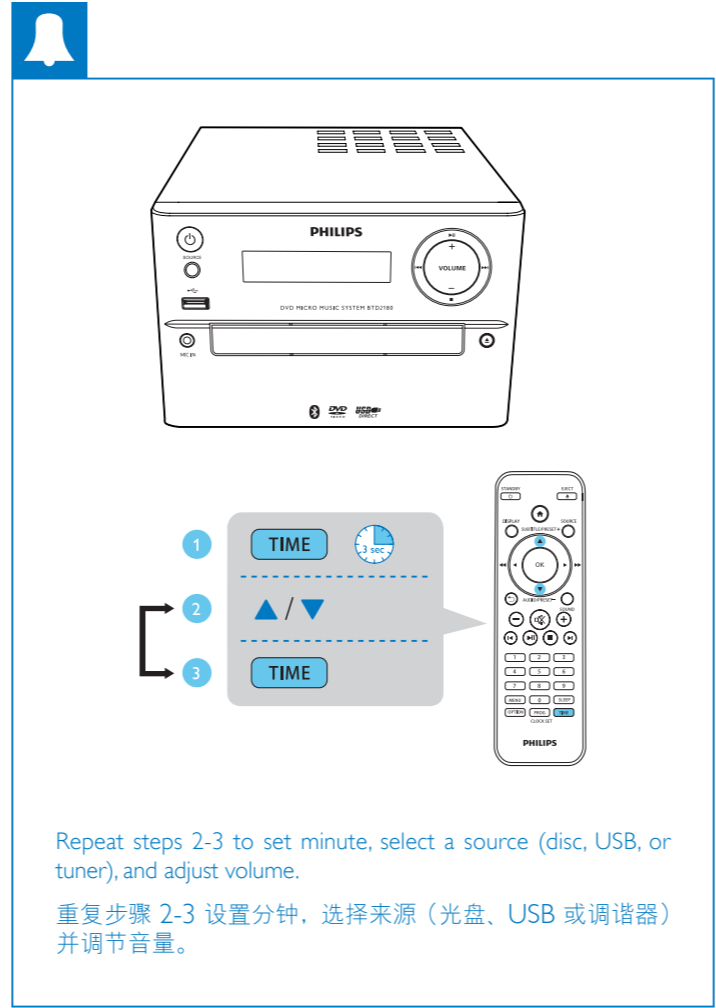
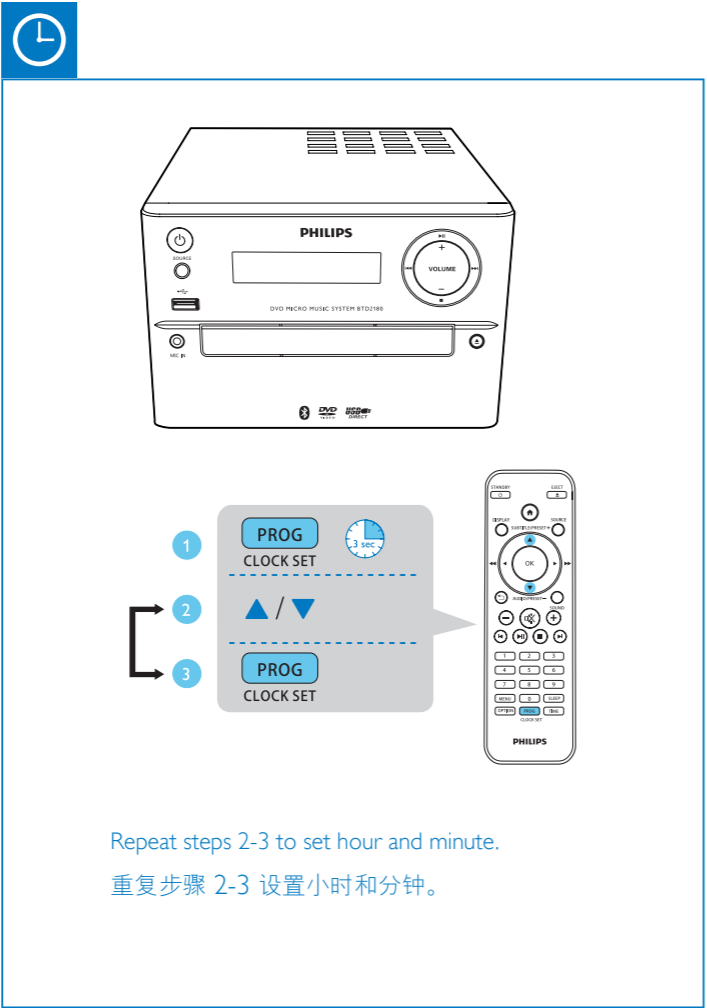
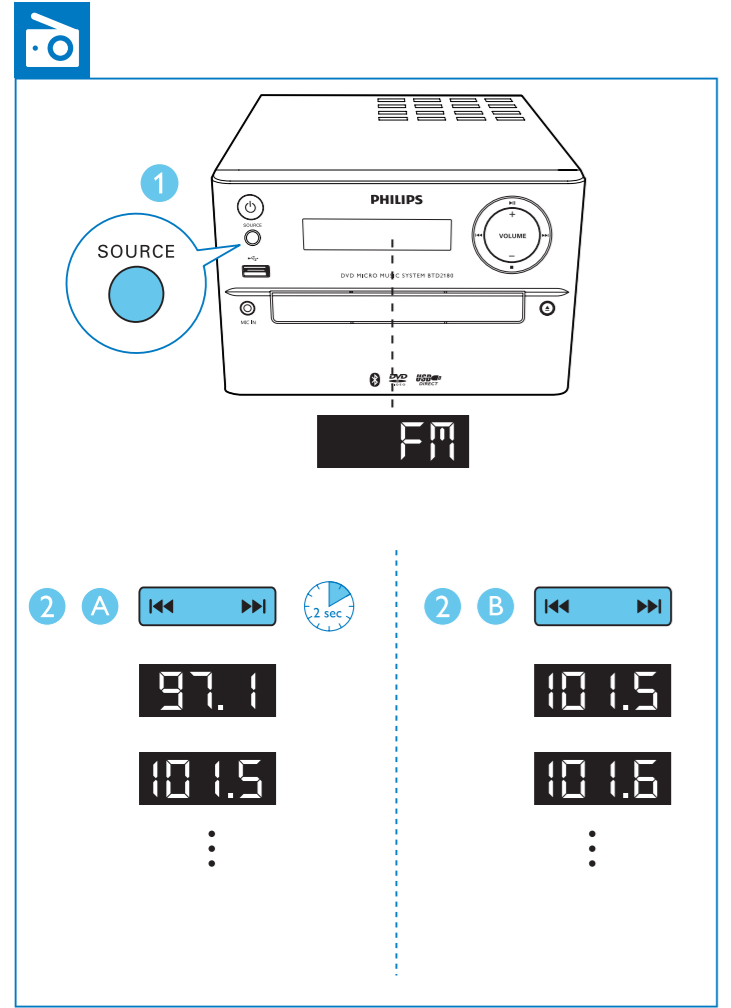
▲/▼	选择文件夹。
◀/▶(◀◀/▶▶)	选择音频文件。
◀/▶	跳至上—或下一标题 / 章节 / 曲目 / 文件。
⏸	暂停或继续播放。
■	停止播放。
+/-	增大或减小音量。
⏶	静音或恢复声音。
SOUND	通过 DSC 丰富音效：均衡、清晰、强劲、暖调和响亮。
DISPLAY	查看播放信息。

Play options

[PBC]	Turn PlayBack Control on/off.
[Aspect Ratio]	Select a picture display format to fit the TV screen.
[Angle]	Switch between camera angles.
[Microphone]	Turn on or off the microphone sound output.
[Karaoke Setup]	Increase or decrease the volume level and echo level of microphone input, and the key level of music.
[Vocal]	Select various Karaoke audio modes, or turn off the original vocal.
[Zoom]	During video play zoom in/out to pan through the image.
[Repeat]	Choose a repeat play option or turn off the repeat function.
[GOTO]	During video play, specify a position to start play by entering the desired time or number.
[Slow Backward] & [Slow Forward]	During video play, select a slow backward/forward speed.

播放选项

[PBC]	打开 / 关闭播放控制。
[宽高比]	选择适合电视屏幕的画面显示格式。
[角度]	在不同的摄像机角度之间切换。
[麦克风]	打开或关闭麦克风声音输出。
[卡拉 OK 设置]	增大或减小麦克风输入的音量级别和回音级别以及音乐的音调级别。
[接唱]	选择各种卡拉 OK 音频模式，或关闭原声。
[缩放]	播放视频期间，放大 / 缩小以在图像上进行平移。
[重复播放]	选择重复播放选项或关闭重复功能。
[转到]	播放视频期间，通过输入所需的时间或数字，指定开始播放的位置。
[慢退] 和 [慢进]	播放视频期间，选择较慢的后退 / 前进速度。



部件名称 Name of the Parts	有毒有害物质或元素 Hazardous/toxic Substance					
	铅 (Pb, Lead)	汞 (Hg, Mercury)	镉 (Cd, cadmium)	六价铬(Chromium 6+)	多溴联苯 (PBB)	多溴二苯醚 (PBDE)
Housing 外壳	○	○	○	○	○	○
Loudspeakers 喇叭单元	○	○	○	○	○	○
PWBs 电路板组件	X	○	○	○	○	○
Accessories (Remote control & cables) 附件 (遥控器、电源 线、连接线)	X	○	○	○	○	○

○：表示该有毒有害物质在该部件所有均质材料中的含量均在SJ/T11363 - 2006 标准规定的限量要求以下。
○:Indicates that this toxic or hazardous substance contained in all of the homogeneous materials for this part is below the limit requirement in SJ/T11363 – 2006.

X：表示该有毒有害物质至少在该部件的某一均质材料中的含量超出SJ/T11363 – 2006 标准规定的限量要求。
X: Indicates that this toxic or hazardous substance contained in at least one of the homogeneous materials used for this part is above the limit requirement in SJ/T11363 – 2006.



EN

1 Important

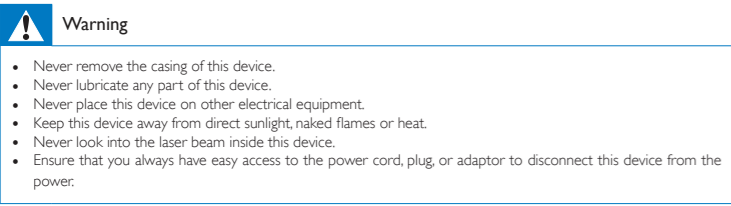
Safety



This 'bolt of lightning' indicates uninsulated material within the device may cause an electrical shock. For the safety of everyone in your household, please do not remove the covering. The exclamation mark calls attention to features for which you should read the enclosed literature closely to prevent operating and maintenance problems. WARNING: To reduce the risk of fire or electric shock, the device should not be exposed to rain or moisture and objects filled with liquids, such as vases, should not be placed on the device. CAUTION: To prevent electric shock, fully insert the plug. (For regions with polarized plugs: To prevent electric shock, match wide blade to wide slot.)

Important Safety Instructions

- Follow all instructions.
- Heed all warnings.
- Do not use this device near water.
- Clean only with dry cloth.
- Do not block any ventilation openings. Install in accordance with the manufacturer's instructions.
- Do not install near any heat sources such as radiators, heat registers, stoves, or other devices (including amplifiers) that produce heat.
- Protect the power cord from being walked on or pinched, particularly at plugs, convenience receptacles, and the point where they exit from the device.
- Only use attachments/accessories specified by the manufacturer.
- Use only with the cart, stand, tripod, bracket, or table specified by the manufacturer or sold with the device. When a cart is used, use caution when moving the cart/device combination to avoid injury from tip-over.
- Unplug this device during lightning storms or when unused for long periods of time.
- Refer all servicing to qualified service personnel. Servicing is required when the device has been damaged in any way, such as power-supply cord or plug is damaged, liquid has been spilled or objects have fallen into the device, the device has been exposed to rain or moisture, does not operate normally, or has been dropped.
- Battery usage CAUTION – To prevent battery leakage which may result in bodily injury, property damage, or damage to the unit:
- Install all batteries correctly, + and - as marked on the unit.
 - Do not mix batteries (old and new or carbon and alkaline, etc.).
 - Batteries (packed or installed) shall not be exposed to excessive heat such as sunshine, fire or the like.
 - Remove batteries when the unit is not used for a long time.
- The device shall not be exposed to dripping or splashing.
- Keep this device away from direct sunlight, naked flames or heat.
- Do not place any sources of danger on the device (e.g. liquid filled objects, lighted candles).
- Where the MAINS plug or an appliance coupler is used as the disconnect device, the disconnect device shall remain readily operable.



2 Notice

Any changes or modifications made to this device that are not expressly approved by Philips Consumer Lifestyle may void the user's authority to operate the equipment. Your product is designed and manufactured with high quality materials and components, which can be recycled and reused. Never dispose of your product with other household waste. Please inform yourself about the local rules on the separate collection of electrical and electronic products and batteries. The correct disposal of these products helps prevent potentially negative consequences on the environment and human health. Your product contains batteries, which cannot be disposed of with normal household waste. Please inform yourself about the local rules on separate collection of batteries. The correct disposal of batteries helps prevent potentially negative consequences on the environment and human health. Please visit www.recycle.philips.com for additional information on a recycling center in your area.

Environmental information

All unnecessary packaging has been omitted. We have tried to make the packaging easy to separate into three materials: cardboard (box), polystyrene foam (buffer) and polyethylene (bags, protective foam sheet).

Your system consists of materials which can be recycled and reused if disassembled by a specialized company. Please observe the local regulations regarding the disposal of packaging materials, exhausted batteries and old equipment.

Be responsible Respect copyrights

The making of unauthorized copies of copy-protected material, including computer programs, files, broadcasts and sound recordings, may be an infringement of copyrights and constitute a criminal offence. This equipment should not be used for such purposes. The Bluetooth® word mark and logos are registered trademarks owned by Bluetooth SIG, Inc. and any use of such marks by Philips is under license.



Manufactured under license from Dolby Laboratories. "Dolby" and the double-D symbol are trademarks of Dolby Laboratories.



"DVD Video" is a trademark of DVD Format/Logo Licensing Corporation.



ABOUT DIVX VIDEO: DivX® is a digital video format created by DivX, LLC, a subsidiary of Rovi Corporation. This is an official DivX Certified® device that plays DivX video. Visit divx.com for more information and software tools to convert your files into DivX videos. ABOUT DIVX VIDEO-ON-DEMAND: This DivX Certified® device must be registered in order to play purchased DivX Video-on-Demand (VOD) movies. To obtain your registration code, locate the DivX VOD section in your device setup menu. Go to vod.divx.com for more information on how to complete your registration. DivX®, DivX Certified® and associated logos are trademarks of Rovi Corporation or its subsidiaries and are used under license. **This apparatus includes this label:**



Note

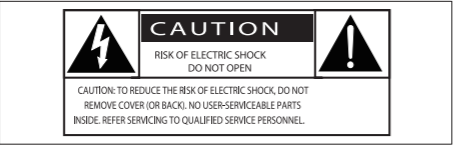
- The type plate is located on the back of the device.

ZH-CN

1 注意事项

安全

了解这些安全标志



此“闪电标志”表示设备中的未绝缘材料可能导致触电。为了您家中每个人的安全，请勿卸下产品外盖。“惊叹号”表示需要对某些功能多加注意，您应仔细阅读附带的说明书以防止出现操作和维护问题。警告：为减少火灾或触电危险，此设备应避免淋雨或受潮。不得将装有液体的物体（如花瓶）放在此设备上。注意：为防止触电，请完成插入插头。（对于具有极化插头的区域：为防止触电，请将宽插片插入宽插槽。）

重要安全说明

- 遵循所有说明。
- 注意所有警告。
- 不要在靠近水的地方使用本设备。
- 只能使用干布进行清洁。
- 不要堵塞任何通风口。按照制造商的说明进行安装。
- 不要在任何热源附近安装，如散热器、蓄热器、炉具或其它发热设备（包括功放器）。
- 防止电源线被踩踏或挤压。特别是在插头、电源插座和设备电源线出口位置。
- 仅使用制造商指定的附件 / 配件。
- 仅使用制造商指定或随设备销售的推车、支座、三脚架、支架或桌台。使用推车时，请小心移动载有产品的推车 / 设备，以避免翻倒造成伤害。
- 在雷电天气期间或长期不用的情况下，请拔下本设备的电源插头。

- 所有维修均应由合格的维修人员来执行。本设备有任何损坏时，如电源线或插头损坏、液体泼溅到或物体跌落到设备上，设备淋雨或受潮，无法正常运行，或者跌落，均需要进行维修。
- 电池使用注意事项 – 为防止电池泄漏而造成人身伤害、财产损失或装置损坏，请：
- 按照装置上标明的 + 极和 - 极，正确安装所有电池。
- 请勿混合使用电池（旧电池与新电池或碳电池与碱性电池，等等）。
- 不可将电池（电池组或安装的电池）置于高温环境，如阳光直射处、明火或类似环境。
 - 若打算长期不用本装置，应取出电池。
- 切勿将设备暴露于漏水或溺水环境下。
- 不要将任何危险源放在本设备上（例如装有液体的物体、点燃的蜡烛）。
- 将电源插头或产品耦合器用作断开设备时，该断开设备应可以随时使用。
- 主插头用作断路装置，在不使用时应将插头拔掉，应保证与电网电源完全切断。



- 警告**
- 切勿拆下本设备的外壳。
 - 切勿润滑本设备的任何部件。
 - 切勿将本设备放在其他电器设备上面。
 - 应让本设备远离阳光直射、明火或高温。
 - 切勿直视本设备内部的激光束。
 - 确保始终可轻易地接触到电源线、电源插头或适配器，以便于将本设备从电源上断开。

2 注意

如果用户未经 Philips 优质生活部门的明确许可而擅自对此设备进行更改或修改，则可能导致其无权操作此设备。本产品采用可回收利用的高性能材料和组件制造而成。切勿将本产品与其它生活垃圾一起处理。请自行了解当地关于分类收集电子、电气产品及电池的規定。正确弃置这些产品有助于避免对环境和人体健康造成潜在的负面影响。本产品所含的电池不能与一般的生活垃圾一同弃置。请自行了解当地关于分类收集电池的規定。正确弃置电池有助于避免对环境和人类健康造成潜在的负面影响。关于您所在地区回收中心的更多信息，请访问 www.recycle.philips.com。

环境信息

已省去所有不必要的包装。我们努力使包装易于分为三种材料：纸板（盒）、泡沫塑料（缓冲物）和聚乙烯（袋、保护性泡沫片）。您的系统包含可回收利用的材料（如果由专业公司拆卸）。请遵守当地有关包装材料、废电池和旧设备的处理的规定。

Be responsible Respect copyrights

进行受版权保护材料（包括计算机程序、文件、广播和录音）的未授权复制可能会侵犯版权并构成犯罪。不得将此设备用于这些目的。蓝牙® 词汇和标识均为 Bluetooth SIG, Inc. 所有，Philips 对这些词汇和标识的任何使用均属合法。



在杜比实验室许可下制造。Dolby 和双 D 标志为杜比实验室的注册商标。



“DVD Video”是 DVD Format/Logo Licensing Corporation 的商标。



关于 DIVX 视频：DivX® 是由 Rovi Corporation 的子公司 DivX, LLC 创建的一种数字视频格式。这是通过 DivX Certified® 官方认证的可播放 DivX 视频的设备。有关更多信息以及将文件转换为 DivX 视频的软件工具，请访问 divx.com。关于 DIVX 随选视频：这款 DivX Certified® 设备必须注册，才能播放付费的 DivX 视频点播（VOD）影片。要获得注册时，请在设备设置菜单中找到 DivX VOD 部分。有关如何完成注册的更多信息，请转到 vod.divx.com。DivX®, DivX Certified® 及相关徽标是 Rovi Corporation 或其子公司的商标，并在授权范围内使用。本装置包括此标签：



注

- 铭牌（铭牌上的信息包括工作电压和消耗功率）位于主机背面，使用前请先了解铭牌上的相关信息。



Specifications

Maximum Output Power	70 W
Speaker Impedance	8 ohm
Speaker Driver	4"woofer + 20mm tweeter
Bluetooth version	V2.1 + EDR
Frequency band	2.4GHz ~ 2.48GHz ISM Band
Range	10m (free space)
Tuning Range	87.5-108 MHz
Tuning grid	50 KHz
USB Direct Version	2.0 full speed
USB 5 V Power	≤500 mA
Disc Diameter	12 cm/8 cm
Video Decoding	MPEG-1 / MPEG-2 / DivX
AC power	100-240 V ~ 50/60 Hz
Operation Power Consumption	28 W
Eco Standby Power Consumption	<0.5 W
Dimensions	
- Main Unit (W × H × D)	180 × 121 × 239 mm
- Speaker Box (W × H × D)	140 × 260 × 185 mm
Weight	
- Main Unit	1.6 kg
- Speaker Box	2 × 2.1 kg



Supported disc formats

- Digital Video Discs (DVDs)
- Video CDs (VCDs)
- SuperVideo CDs (SVCDs)
- Digital Video Discs + Rewritable (DVD+RW)
- Compact Discs (CDs)
- Picture (Kodak, JPEG) files on CDR(W)
- DivX(R) disc on CD-R(W)
- DivX 3.11, 4.x and 5.x

Supported MP3-CD formats:

- ISO 9660
- Max. title/album name: 12 characters
- Max. title number plus album: 255.
- Max. nested directory: 8 levels.
- Max. album number: 32.
- Max. MP3 track number: 999.
- Supported sampling frequencies for MP3 disc: 32 kHz, 44.1 kHz, 48 kHz.
- Supported Bit-rates of MP3 disc are: 32, 64, 96, 128, 192, 256 (kbps).

Compatible USB devices:

- USB flash memory (USB2.0 or USB1.1)
- USB flash players (USB2.0 or USB1.1)
- memory cards (requires an additional card reader to work with this unit)

Supported USB formats:

- USB or memory file format: FAT12, FAT16, FAT32 (sector size: 512 bytes)
- MP3 bit rate (data rate): 32-320 Kbps and variable bit rate
- Directory nesting up to a maximum of 8 levels
- Number of albums/ folders: maximum 99
- Number of tracks/titles: maximum 999
- ID3 tag v2.0 or later
- File name in Unicode UTF8 (maximum length: 32 bytes)

规格

最大输出功率	70 瓦
扬声器阻抗	8 欧姆
扬声器驱动器	4 英寸低音扬声器 + 20 毫米高音扬声器
蓝牙版本	V2.1 + EDR
频段	2.4GHz ~ 2.48GHz ISM 频段
范围	10 米（开阔空间）
调谐范围	87.5-108 兆赫
调谐栅	50 千赫
USB 直放版本	2.0 全速
USB 5 V 电源	≤500 毫安
光盘直径	12 厘米/8 厘米
视频解码	MPEG-1 / MPEG-2 / DivX
交流电源	100-240 伏，50/60 赫兹
操作功耗	28 瓦
环保节能待机功耗	< 0.5 瓦
尺寸	
- 主装置（宽 × 高 × 厚）	180 × 121 × 239 毫米
- 音箱（宽 × 高 × 厚）	140 × 260 × 185 毫米
重量	
- 主装置	1.6 千克
- 音箱	2 × 2.1 千克

支持的光盘格式

- 数字视频光盘 (DVD)
- Video CD (VCD)。
- 超级 VCD (SVCD)
- 数字视频光盘 + 可重写 (DVD+RW)
- 压缩光盘 (CD)
- CDR(W) 上的图片 (Kodak, JPEG) 文件
- DivX(R) 上的 DivX(R) 光盘：
- DivX 3.11, 4.x 和 5.x

支持的 MP3-CD 格式:

- ISO 9660
- 最大 标题 / 专辑名称: 12 个字符
- 最大 标题数加专辑数: 255.
- 最大 嵌套目录: 8 层。
- 最大 专辑数: 32.
- 最大 MP3 曲目数: 999.
- 支持的 MP3 光盘采样频率: 32 千赫、44.1 千赫、48 千赫。
- 支持的 MP3 光盘比特率: 32、64、96、128、192、256 (kbps)。

兼容的 USB 设备:

- USB 闪存（USB2.0 或 USB1.1）
- USB 闪存播放机（USB2.0 或 USB1.1）
- 存储卡（需要额外的读卡器才能用于本装置）

支持的 USB 格式:

- USB 或内存文件格式: FAT12, FAT16, FAT32（扇区大小: 512 个字节）
- MP3 位速率（数据速率）: 32-320 Kbps 和可变速率
- 目录嵌套最多可达 8 层
- 专辑 / 文件夹数量: 最多 99
- 曲目 / 标题数量: 最多 999
- ID3 标签 v2.0 或更高版本
- Unicode UTF8 类型的文件名（最大长度: 32 个字节）