

PHILIPS

Quick Start Guide

Micro music system

BTB2570



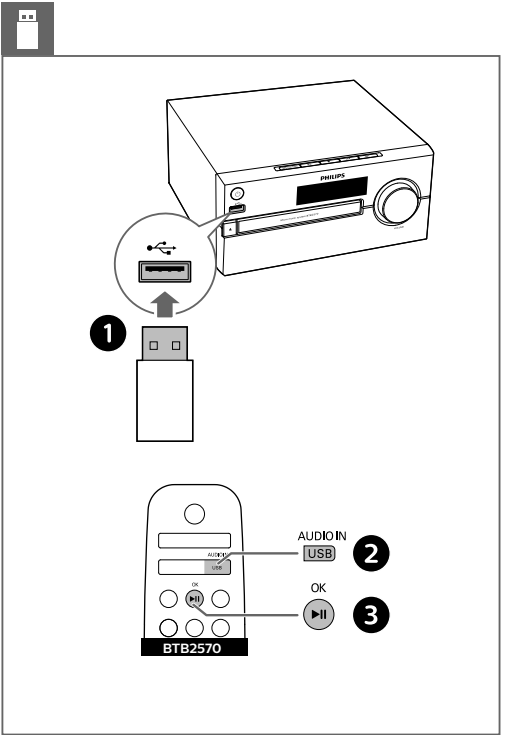
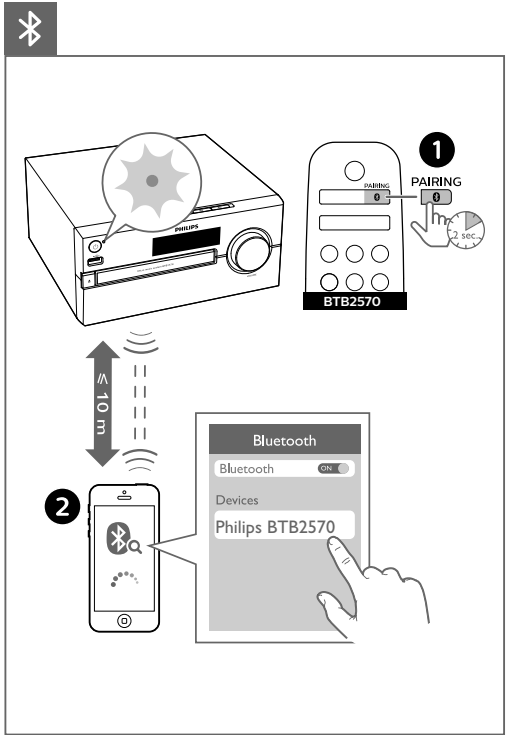
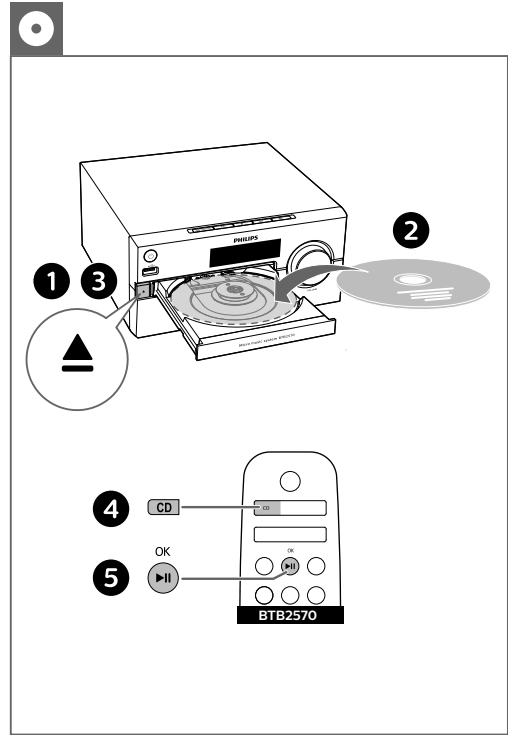
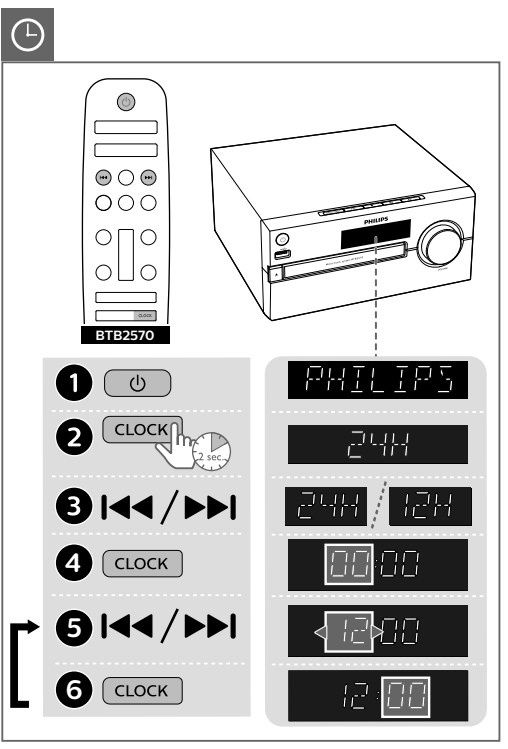
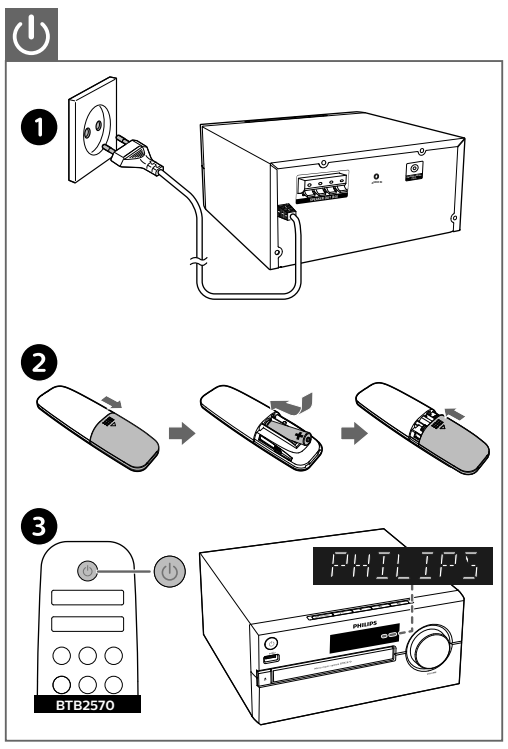
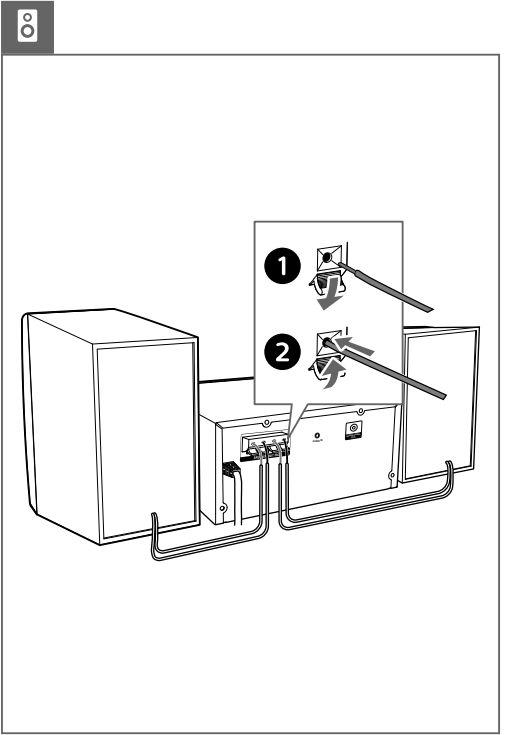
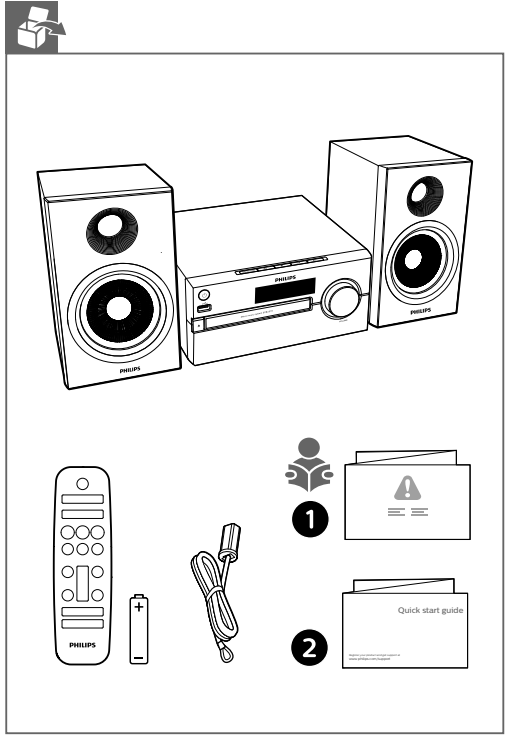
Register your product and get support at www.philips.com/support



Specifications are subject to change without notice. This product has been manufactured by, and is sold under the responsibility of Gibson Innovations Ltd., and Gibson Innovations Ltd. is the warrantor in relation to this product. The Philips trademark and the Philips Shield Emblem are registered trademarks of Koninklijke Philips N.V. used under license.



BTB2570_12_QSG_V2.0



BTB2570

BTB2570

BTB2570

1 FM
DAB

2 OK

3 |◀/▶|

123.3

↓

SCAN

1 FM
DAB

2 A |◀/▶|

2 B |◀/▶|

FM

1 FM
DAB

2 SCAN
PROG

3 ▲/▼

FM

PO1

PO3

zzz

BTB2570

SLEEP
TIMER

120 MIN

90 MIN

60 MIN

30 MIN

15 MIN

OFF

BTB2570

1 [Power]

2 SLEEP
TIMER

3 |◀/▶|

4 SLEEP
TIMER

5 |◀/▶|

6 SLEEP
TIMER

7 |◀/▶|

8 |◀/▶|

9 SLEEP
TIMER

08:30

FM

01:30

VOL 3

TIMER ON

BTB2570

AUDIO IN
USB

1

2

3.5MM
STEREO

2

1

www.philips.com/support