

Always there to help you  
Register your product and get support at  
[www.philips.com/support](http://www.philips.com/support)

AZ127



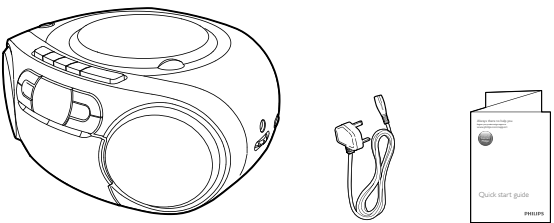
Quick start guide

PHILIPS

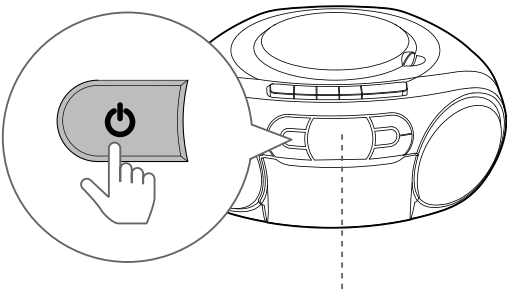


This product has been manufactured by, and is sold under the responsibility of Gibson Innovations Ltd., and Gibson Innovations Ltd. is the warrantor in relation to this product.  
Philips and the Philips Shield Emblem are registered trademarks of Koninklijke Philips N.V. and are used under license.

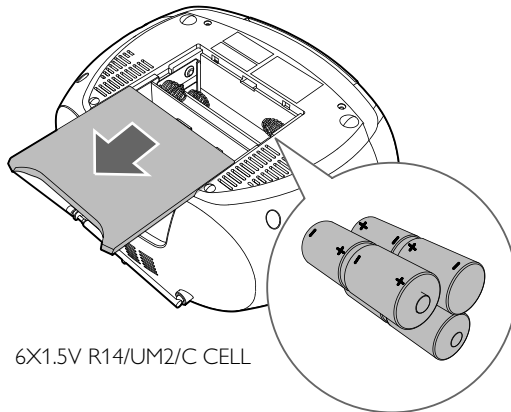
AZ127\_05\_QSG\_V7.0



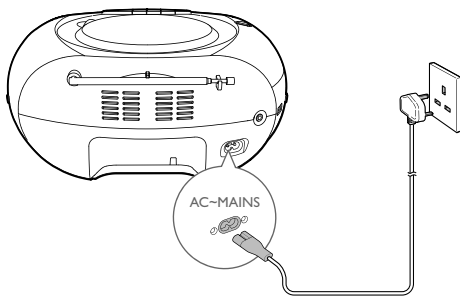
Before using your product, read all accompanying safety information.



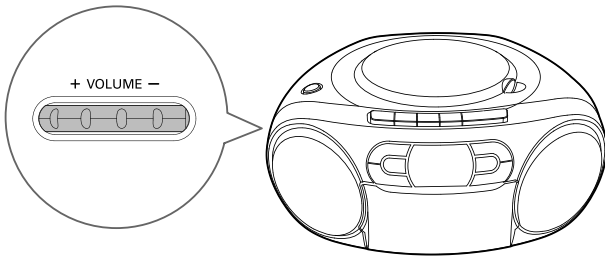
- \* In CD/FM/AUDIO IN mode, press to power on the device.
- \* There is no message shown on the display panel in FM or TAPE mode.
- \* In CD mode, the device switches to standby mode automatically if there is no playback for over 15 minutes.



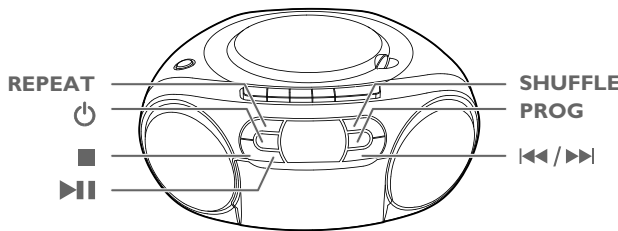
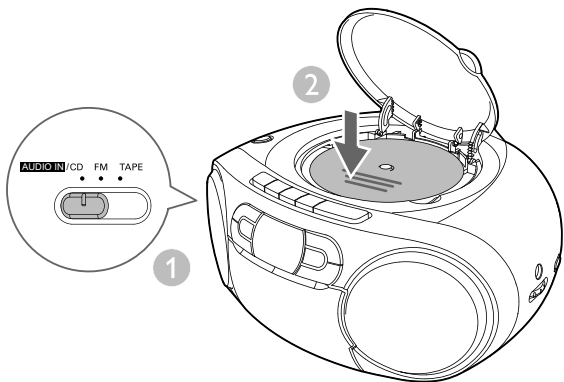
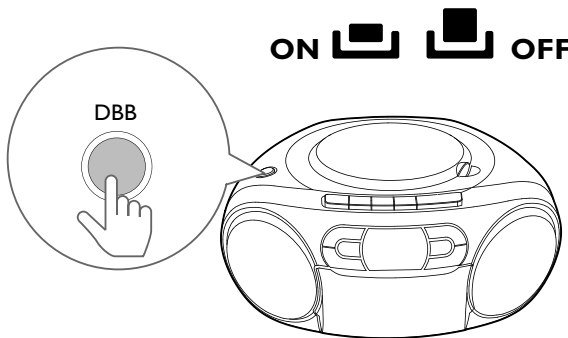
6X1.5V R14/UM2/C CELL



To play with the device, you can use either alkaline battery (R14) or AC power.



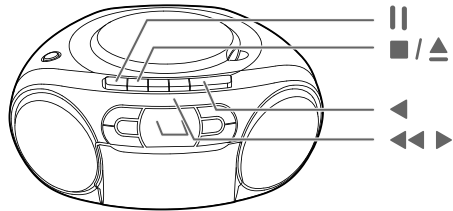
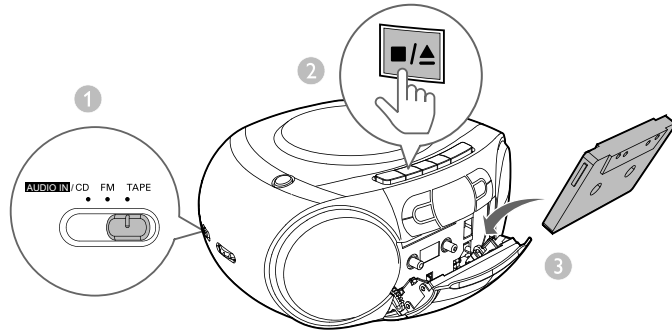
DBB



<b>REPEAT</b>	Play a track or all tracks repeatedly.
	Turn on/off the unit.
	Stop play or erase a program.
	Pause or start play.
<b>SHUFFLE</b>	Play tracks randomly.
<b>PROG</b>	Program the play sequence of tracks.
	Skip to the previous/next track or search within play.

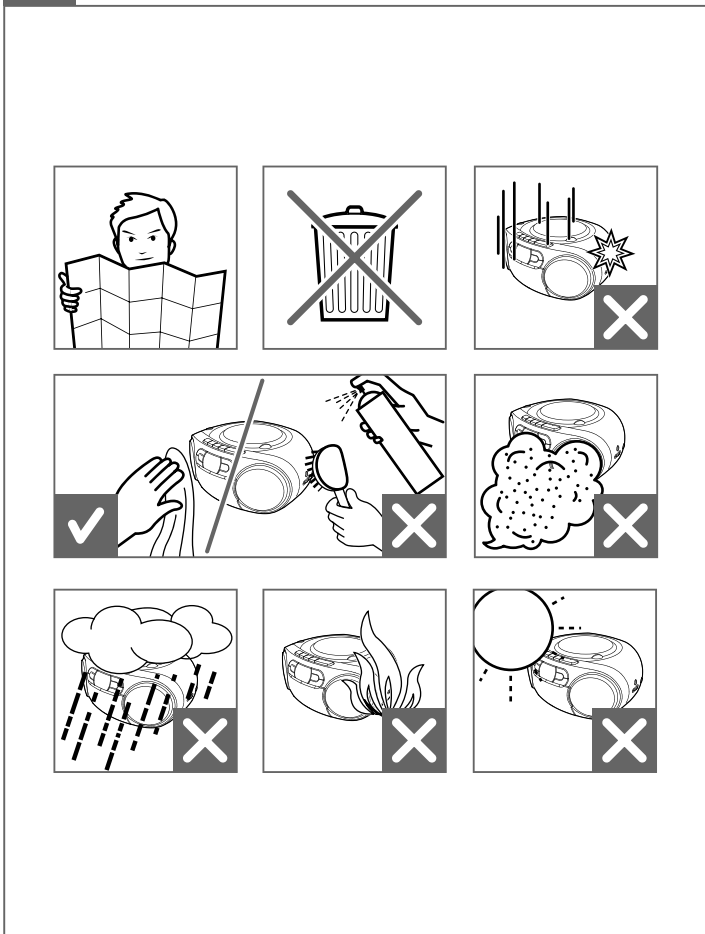
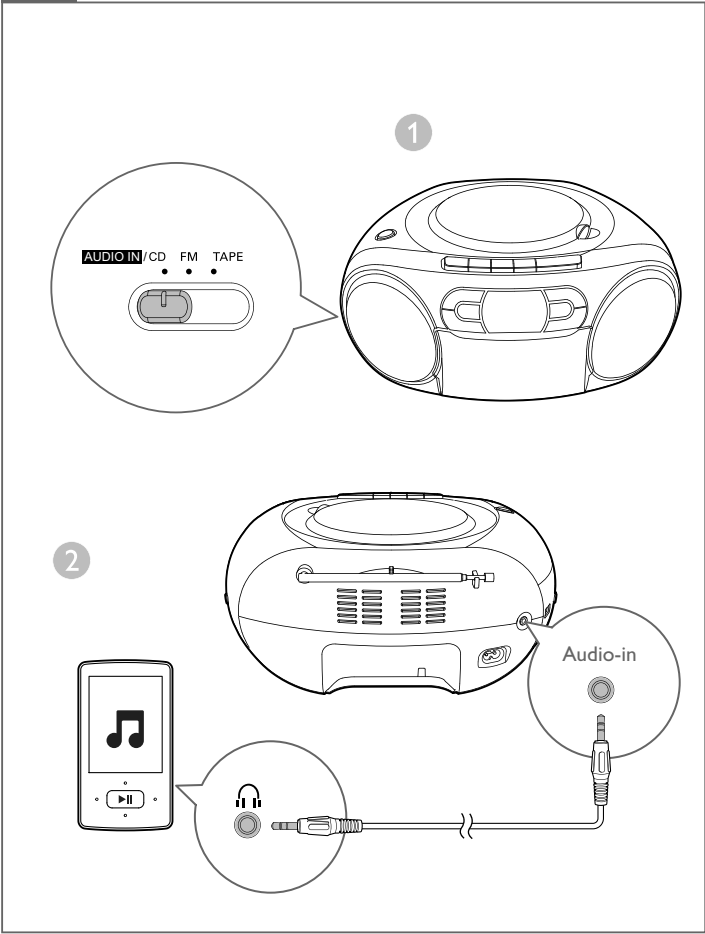
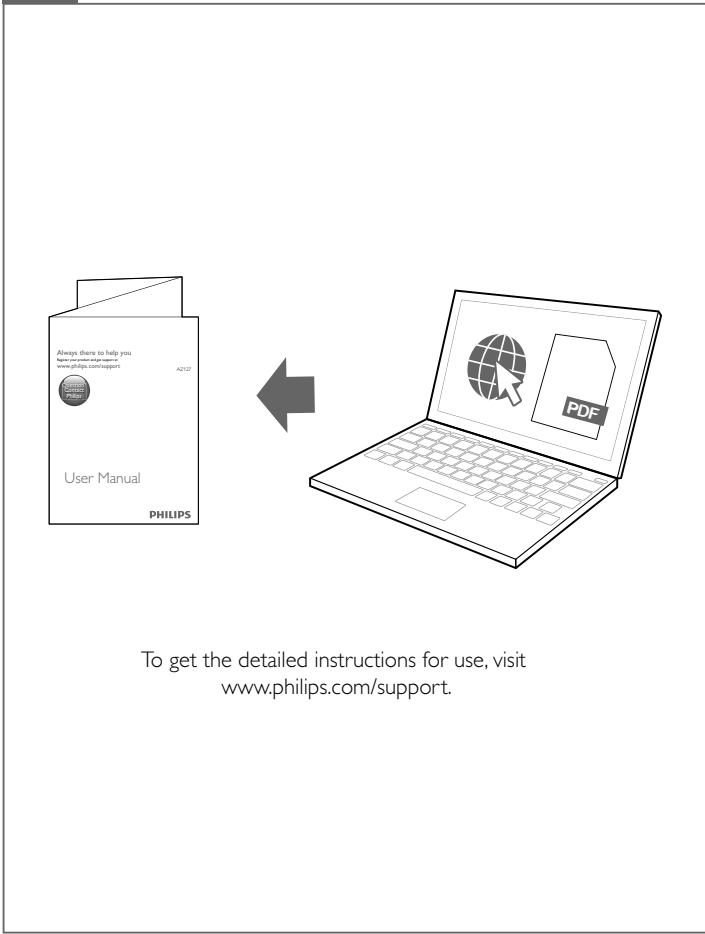
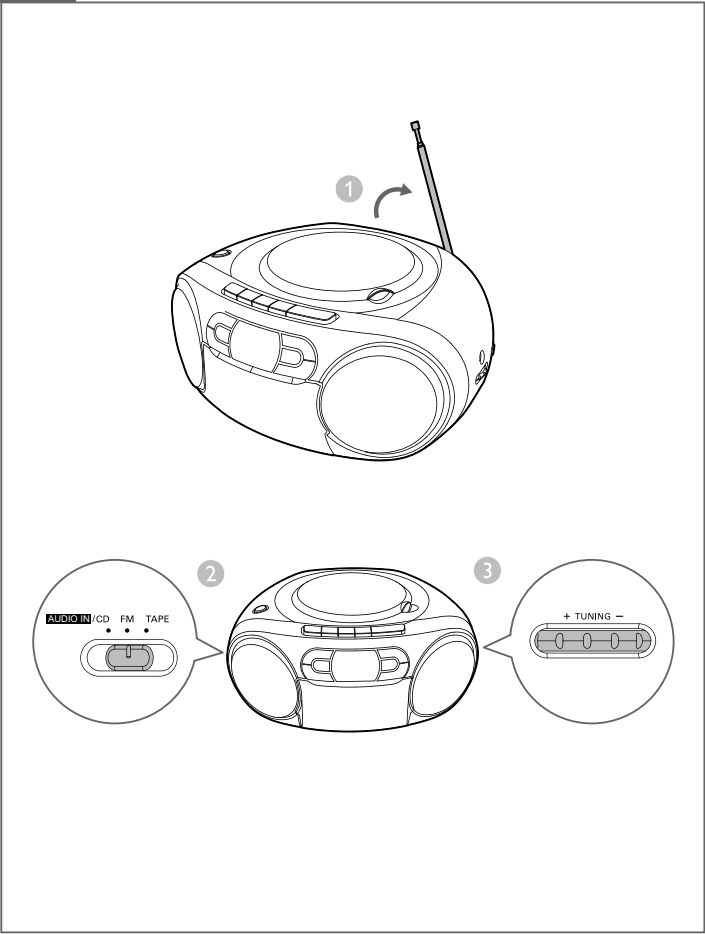
Program tracks

- 1 In CD mode, press to stop playback.
- 2 Press **PROG** to activate programming.
- 3 Press repeatedly to select a track, then press **PROG** to confirm.
- 4 Repeat steps 3 to program more tracks.
- 5 Press to play the programmed tracks.
- 6 To cancel the program, press twice.



	Pause.
	Press to open the tape door.
	Start to play.
	Search within play.

Make sure that all the buttons are ejected when you close the tape door with a tape inside.



## Specifications

Rated Output Power	Total 2 W RMS
Frequency Response	125 -16000 Hz, -3 dB
Signal to Noise Ratio	>55 dBA
Total Harmonic Distortion	<1 %
Audio-in Input	650 mV RMS
Tuning Range	FM: 87.5 - 108MHz
Power supply	
- AC Power	220 - 240V, 50/60 Hz
- Battery	=== 9 V, 6 x 1.5 V R14/UM2
Operation Power Consumption	10 W
Standby Power Consumption	< 0.5 W
Dimensions - Main Unit (W x H x D)	300 x 134 x 240 mm
Weight - Main Unit	1.5 kg

## 1 Important

- Read these instructions.
- Follow all instructions.
- Do not block any ventilation openings. Install in accordance with the manufacturer's instructions.
- Do not install near any heat sources such as radiators, heat registers, stoves, or other apparatus (including amplifiers) that produce heat.
- Protect the power cord from being walked on or pinched, particularly at plugs, convenience receptacles, and the point where they exit from the unit.
- Only use attachments/accessories specified by the manufacturer.
- Unplug this unit during lightning storms or when unused for long periods of time.
- Recording is permissible insofar as copyright or other rights of third parties are not infringed upon.
- Refer all servicing to qualified service personnel. Servicing is required when the unit has been damaged in any way, such as power-supply cord or plug is damaged, liquid has been spilled or objects have fallen into the apparatus, the unit has been exposed to rain or moisture, does not operate normally, or has been dropped.
- Battery usage CAUTION –To prevent battery leakage which may result in bodily injury, property damage, or damage to the unit:
  - Install all batteries correctly, + and - as marked on the unit.
  - Do not mix batteries (old and new or carbon and alkaline, etc.).
  - Remove batteries when the unit is not used for a long time.
- Batteries (battery pack or batteries installed) shall not be exposed to excessive heat such as sunshine, fire or the like.
- CAUTION: Danger of explosion if battery is incorrectly replaced. Replace only with the same or equivalent type.
- The unit shall not be exposed to dripping or splashing.
- Do not place any sources of danger on the unit (e.g. liquid filled objects, lighted candles).
- Where the MAINS plug or an appliance coupler is used as the disconnect device, the disconnect device shall remain readily operable.

### Warning

- Never remove the casing of this apparatus.
- Never place this apparatus on other electrical equipment.
- Never look into the laser beam inside this apparatus.

### Products with molded plugs-UK

This information applies only to products with a UK mains plug. This product is fitted with an approved molded plug. If you replace the fuse, use one with:

- the ratings shown on the plug,
- a BS 1362 approval, and
- the ASTA approval mark.

Contact your dealer if you are not sure about what type of fuse to use. Caution: To conform with the EMC directive (2004/108/EC), do not detach the plug from the power cord.

### Caution

- Use of controls or adjustments or performance of procedures other than herein may result in hazardous radiation exposure or other unsafe operation.

## 2 Notice

Hereby, Gibson Innovations declares that this product is in compliance with the essential requirements and other relevant provisions of Directive 2014/53/EU. You can find the Declaration of Conformity on [www.philips.com/support](http://www.philips.com/support). Any changes or modifications made to this device that are not expressly approved by Gibson Innovations may void the user's authority to operate the equipment.



Your product is designed and manufactured with high quality materials and components, which can be recycled and reused.



When this crossed-out wheeled bin symbol is attached to a product it means that the product is covered by the European Directive 2012/19/EC. Please inform yourself about the local separate collection system for electrical and electronic products. Please act according to your local rules and do not dispose of your old products with your normal household waste. Correct disposal of your old product helps to prevent potential negative consequences for the environment and human health.



Your product contains batteries covered by the European Directive 2013/56/EC, which cannot be disposed with normal household waste. Please inform yourself about the local rules on separate collection of batteries because correct disposal helps to prevent negative consequences for the environmental and human health.

### Environmental information

All unnecessary packaging has been omitted. We have tried to make the packaging easy to separate into three materials: cardboard (box), paper pulp (buffer) and polyethylene (bags, protective foam sheet.) Your system consists of materials which can be recycled and reused if disassembled by a specialized company. Please observe the local regulations regarding the disposal of packaging materials, exhausted batteries and old equipment.

This apparatus includes these labels:



Class II equipment symbol



This symbol indicates that the apparatus has a double insulation system.



The making of unauthorized copies of copy-protected material, including computer programs, files, broadcasts and sound recordings, may be an infringement of copyrights and constitute a criminal offence. This equipment should not be used for such purposes.

### Note

- The type plate is located on the bottom of the apparatus.