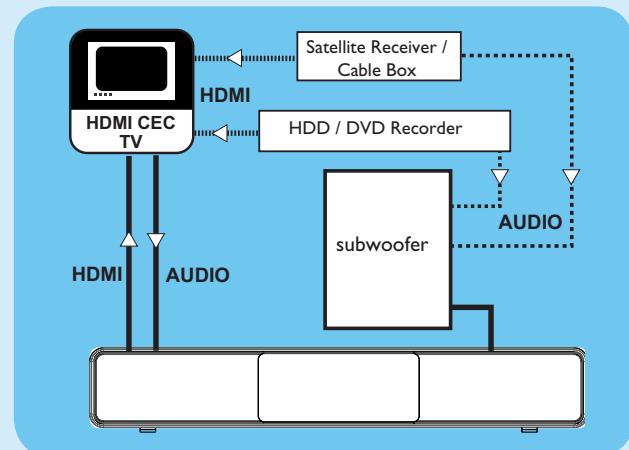


3 Enjoy

EasyLink control

This feature is only applicable if this DVD Home Theatre unit is connected to HDMI CEC compliant TV/device using HDMI cable. It enables all the linked devices response or react to certain commands simultaneously with one touch control.



- 1 Turn on the HDMI CEC operations on your TV and other connected devices. See TVs/devices manual for details.
- 2 You can now enjoy the EasyLink controls.

One touch play [Auto Wake-up TV]

- 1 Press PLAY.
It turns on this unit and start disc play (if a video disc is detected), and your TV automatically turns on and switches to the correct viewing channel.

Note This is only possible if this unit is in standby mode. If this unit is in active mode, you have to press DISC followed by PLAY to start disc play.

One touch power off [System Standby]

- 1 Press and hold .
It turns off all linked devices.

Note This unit responds to standby command from other HDMI CEC compliant TV/devices.

One touch audio input switching

This unit is able to render the audio signals from the active source and switch automatically to the corresponding audio input.

Before you can enjoy this feature, connect audio cables from this unit to your TV/devices and follow the instructions below to map the audio inputs to the connected devices.

- 1 Press **DISC**.
- 2 Press **OPTIONS**.
- 3 Press **▶**.
- 4 Select [EasyLink], then press **▶**.

General Setup	
	EasyLink
	Disc Lock
	Display Dim
	OSD Language
	Screen Saver
	Sleep Timer
	Standby Mode
	DivX(R) VOD Code

- 5 Select [System Audio Control] > [On], then press **OK**.
- 6 Select [Audio Input Mapping], then press **OK**.
- 7 Select [OK] in the menu, then press **OK** to start scanning of devices.
- 8 When scanning complete, select the audio input of this unit that is used to connect to your TV/device (e.g. AUX1 Input), then press **▶**.
- 9 Select the TV/device (appeared in its brand name) in the right panel, then press **OK**.
- 10 Repeat steps 8~9 to map other connected devices.
- 11 To exit the menu, press **OPTIONS**.

Note Philips does not guarantee 100% interoperability with all HDMI CEC compliant devices.

Register your product and get support at
www.philips.com/welcome

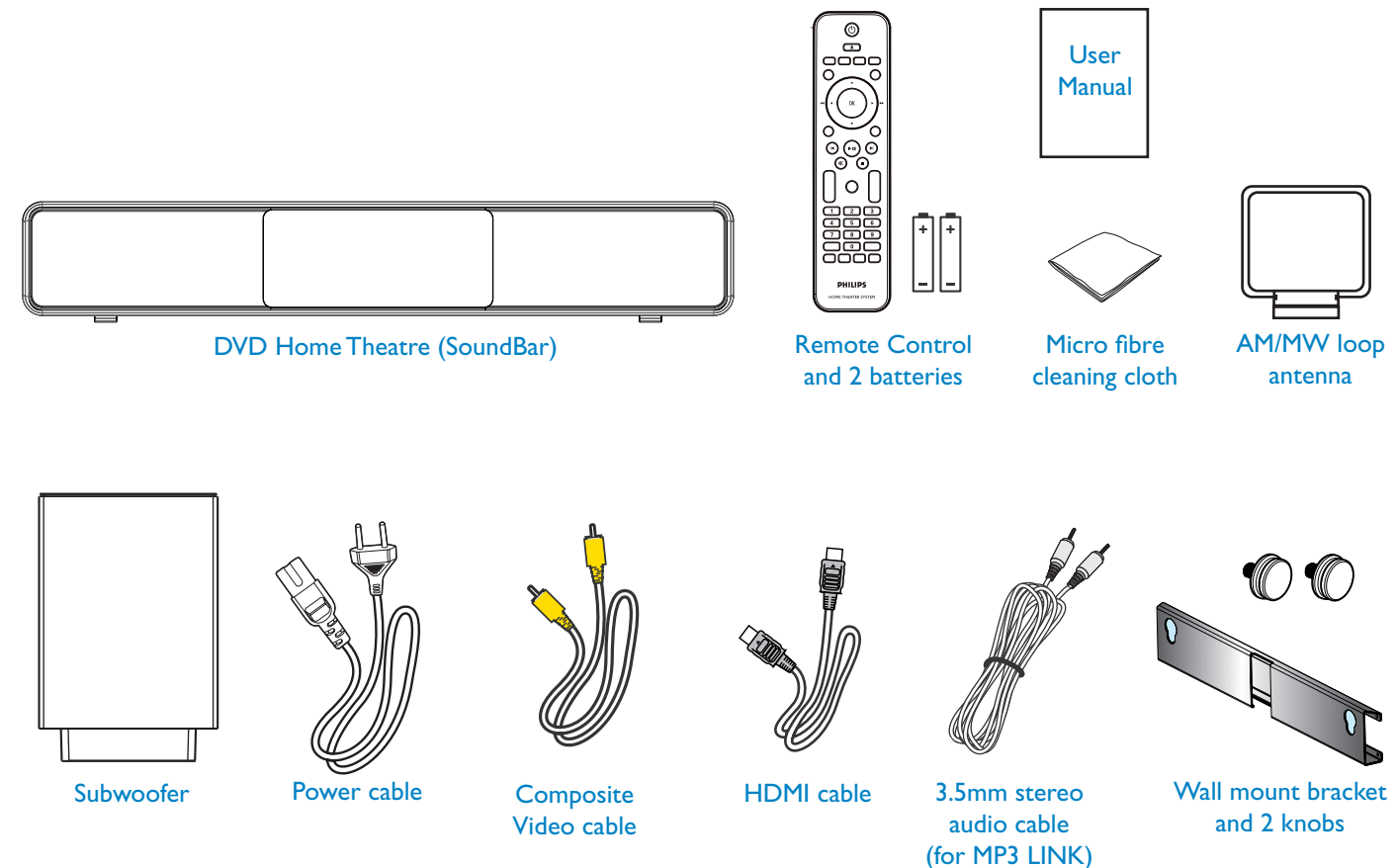
HTS6100



- 1 Connect
- 2 Set up
- 3 Enjoy

Quick Start Guide

What's in the box?



Need help?

User Manual

See the user manual that came with your Philips DVD Home Theatre System.

Be responsible
Respect copyrights



2008 © Koninklijke Philips N.V.
All rights reserved.

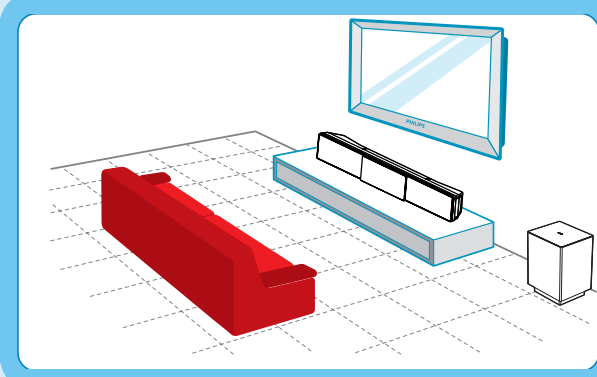
sgpip_818/55-eng1

PHILIPS

1 Connect

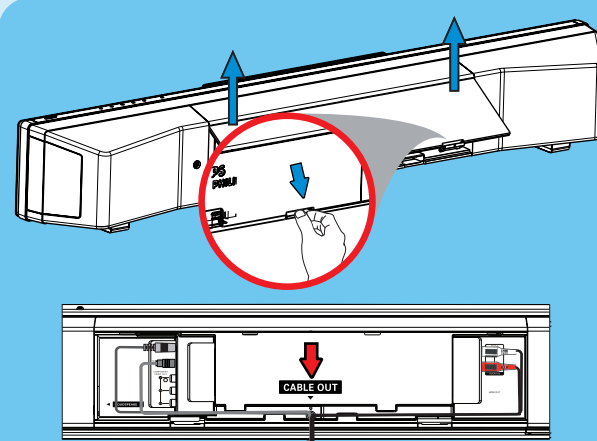
A Placement

Proper speakers system placement is important to ensure optimum sound performance.



- 1 Place the DVD Home Theatre unit (SoundBar) at the normal listening ear-level, or at least above the knee-level. Face it straight ahead towards the listening area.
- 2 Place the subwoofer on the floor, at least one metre away from the TV.

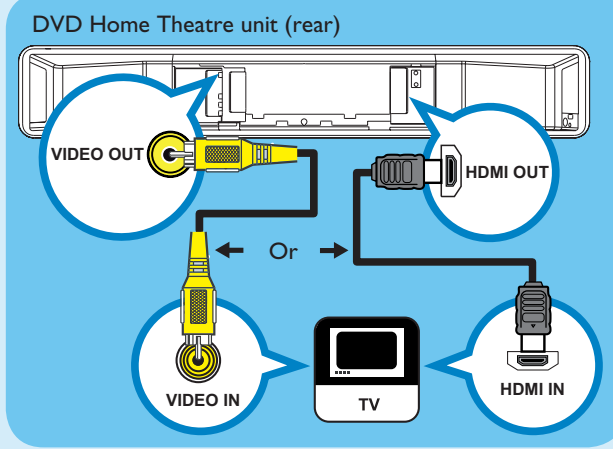
B Prepare for rear connections



- 1 Push up the catches to lift up the rear cover.
- 2 Connect the required cables (see the following sections for details) and direct all the cables to the CABLE OUT point.

Note All the cables must be placed properly inside the rear panel in order for the rear cover to close.

C Connect to TV

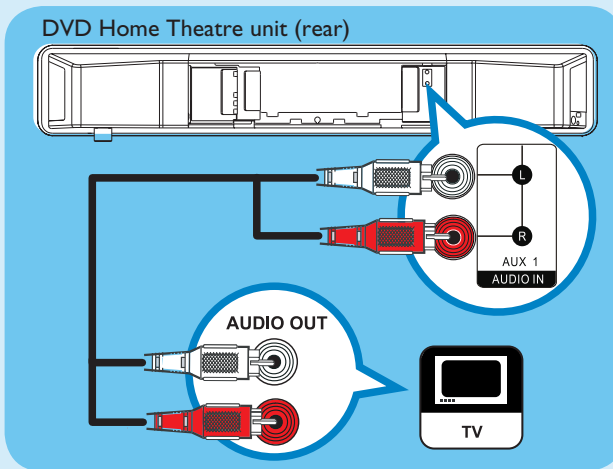


- If your TV supports HDMI, connect the HDMI cable from the HDMI OUT socket to the HDMI IN socket on your TV. Or;
- Connect the composite video cable from the VIDEO OUT socket to the VIDEO IN socket on your TV.

Note HDMI connection does not support audio output from your TV to this unit, a separate audio connection is required.

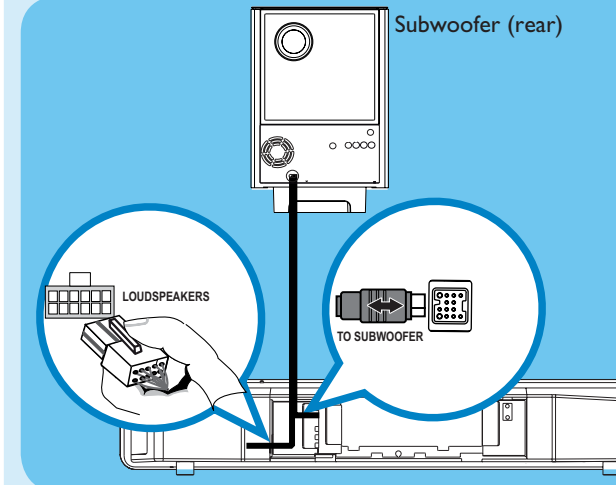
D Connect audio output from TV (for EasyLink control)

To hear the TV audio through this DVD Home Theatre unit, connect an audio cable (not supplied) from the AUDIO IN-AUX1 sockets to the AUDIO OUT sockets on your TV.



Note To listen to the audio output from this connection, press **AUX/DI /MP3 LINK** repeatedly until 'AUX1 INPUT' is displayed on the display panel.

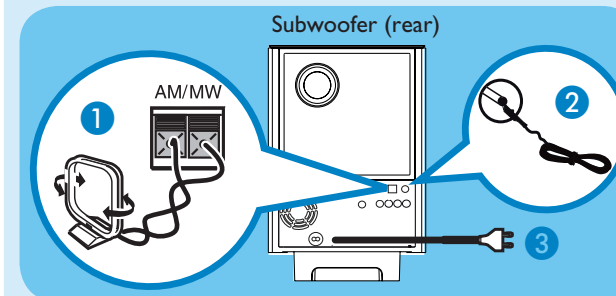
E Connect subwoofer



- Unwind the cables from TO MAIN UNIT on the subwoofer, then connect the grey end cable to TO SUBWOOFER socket and white end cable to LOUDSPEAKERS socket on this DVD Home Theatre unit.

F Connect radio antenna and power cable

Keep the antennas away from the electronic devices to prevent unwanted interference.



- 1 Connect the AM/MW loop antenna to the AM/MW socket. Place it on a shelf, or attach it to a stand or wall.
- 2 Connect the FM antenna to the inner pin of the FM 75 Ω socket (for some models, it has been connected in the factory). Extend the wire for optimum reception.
- 3 Connect the power cable from subwoofer to the AC power outlet.

2 Set up

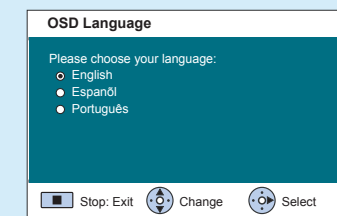
A Find the viewing channel

- 1 Press **Power** to turn on this DVD Home Theatre unit.
- 2 Turn on the TV. Use the TV's remote control to select the correct viewing channel.

Note To search for the correct viewing channel, press the Channel Down button on the TV's remote control repeatedly (or AV, SELECT, **Exit** button) until you see the Video In channel.

B Start Ambisound setup

When you turn on this DVD Home Theatre unit (SoundBar) for the first time, follow the instructions on the TV to complete the setup.



- 1 Select a language for on-screen display, then press **Right Arrow**.
- 2 [Welcome] message is displayed, press **Right Arrow** to continue.
- 3 [Orientation] message is displayed, press **Right Arrow** to continue.
- 4 Select a most suitable predefined setting according to your room environment and setup, press **Right Arrow** to confirm and go to the next setup screen.

[Room Acoustics]

Select the type of walls that surround your room. The default setting is [Hard (concrete, wood)].

[Room Placement]

Select the SoundBar placement position in your room. The default setting is [Middle of room].

[Height]

Select the height at which the SoundBar is placed. The default setting is between 0.8~1.2 m.

[Listening Position]

Select the distance between the listening position and the SoundBar. The default setting is between 2~3m.

- 5 When [Complete] screen is displayed, press **Right Arrow** to exit.

Note Refer to the accompanying user manual for other setup options.