



Philips
In-Ear Headphones

14.2 mm drivers/open-back
Ear bud

SHE3205WT

Rich bass, clear sound

Designed to comfortably fit the shape of your ear

Designed for optimal fit and comfort, the SHE3205 earphones feature 14.2 mm drivers and bass vents for rich bass and clear sound. The built-in mic lets you switch easily between music and calls. Available in a choice of 6 vibrant colours to match your Apple watch.

Enjoy quality sound

- 14.2 mm speaker drivers for rich bass and clear sound
- Neodymium magnets enhance bass performance

Ultimate wearing comfort

- Designed to comfortably fit the shape of your ear

Design for convenience

- Built-in microphone switches you from music to phone calls
- Flexi-Grip design for durability

PHILIPS

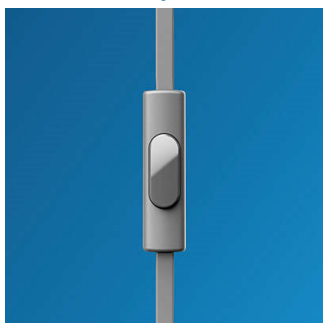
Highlights

14.2 mm speaker drivers



Quality 14.2 mm speaker drivers with neodymium magnet delivers rich bass and clear sound.

Built-in microphone

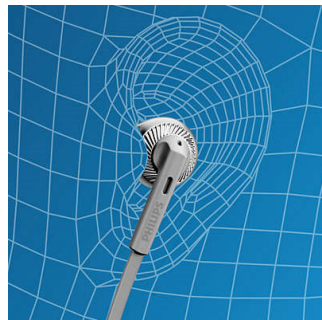


The built-in microphone lets you switch from listening to music to taking phone calls - easily, so you'll always stay connected with what matters most to you.

Designed for comfort

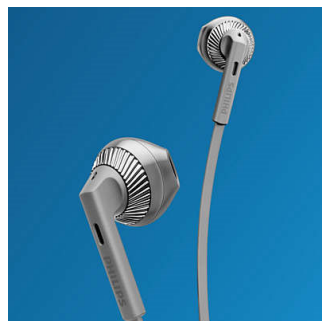
The design is based on ear geometry for comfortable wear and a snug fit for everyone.

Flexi-Grip



A soft, flexible part that connects the housing and the cable protects the cable connection from damage, even if bended heavily.

Neodymium magnets



Neodymium is the best material for producing a strong magnetic field for greater sensitivity in a voice coil, providing a better bass response and higher overall sound quality.

Specifications

Sound

- Acoustic system: open
- Frequency response: 8–24,000 Hz
- Magnet type: Neodymium
- Speaker diameter: 14.2 mm
- Sensitivity: 107 dB
- Maximum power input: 30 mW
- Impedance: 32 ohm

Connectivity

- Type of cable: copper
- Cable Connection: two-parallel, symmetric
- Finishing of connector: nickel plated
- Cable length: 1 m
- Connector: 3.5 mm

Design

- Colour: White

