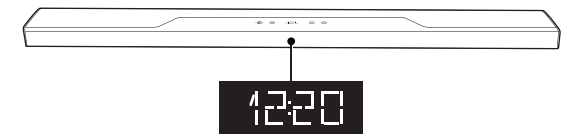
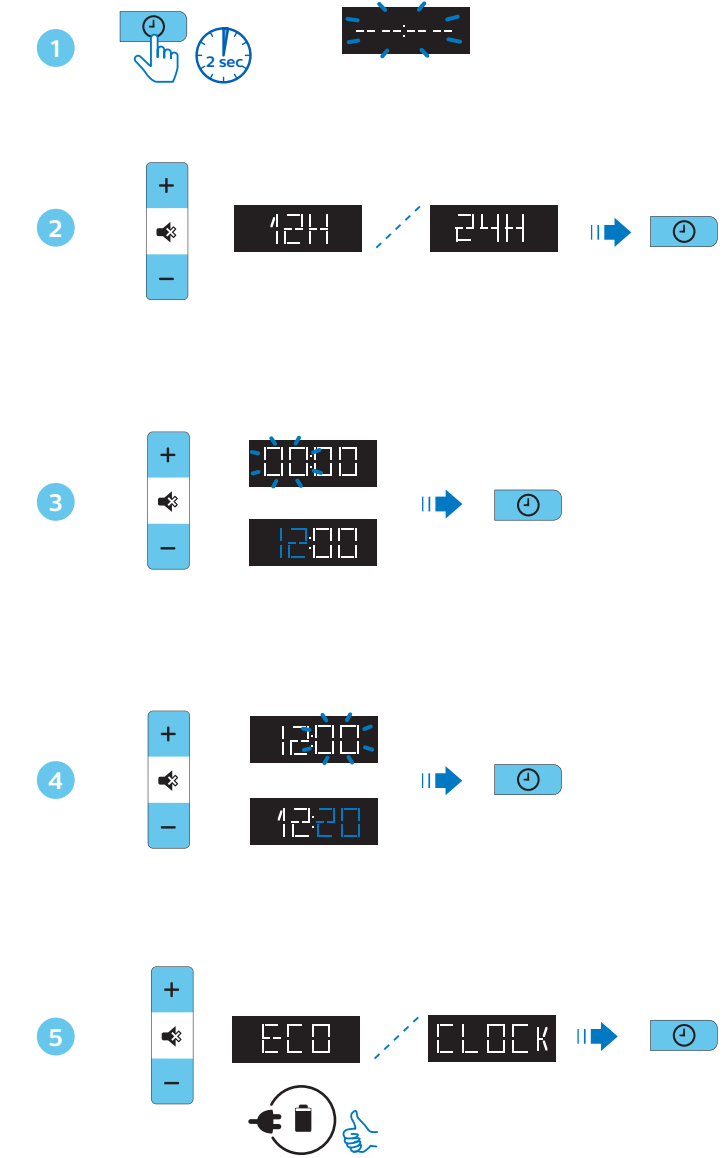
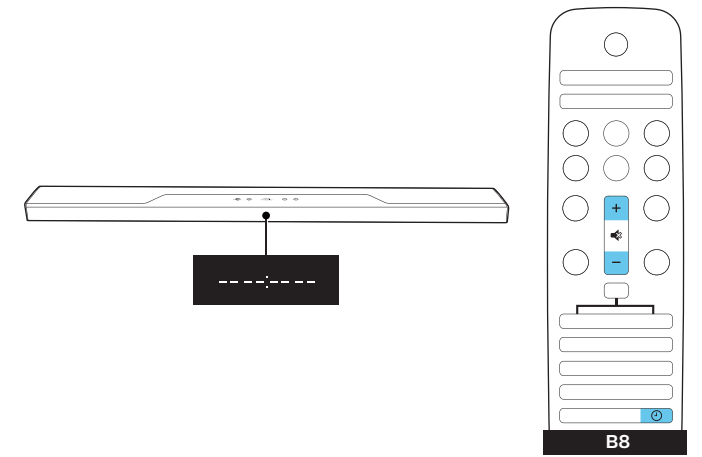
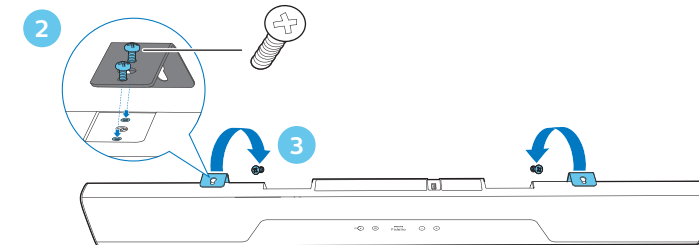
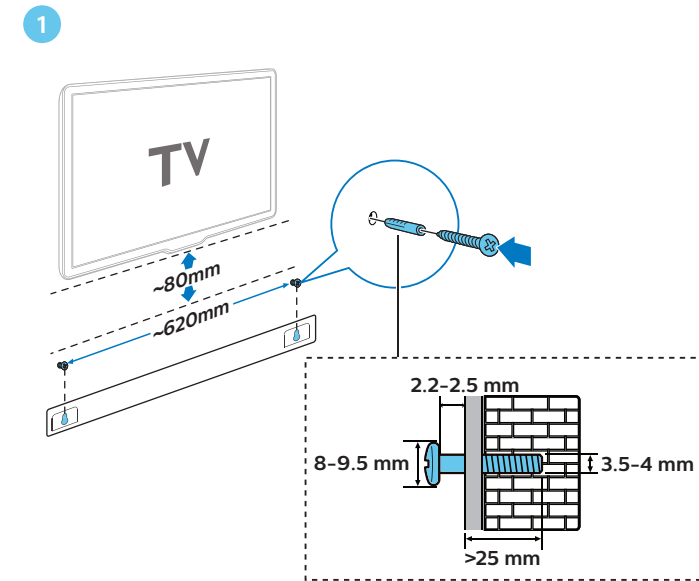
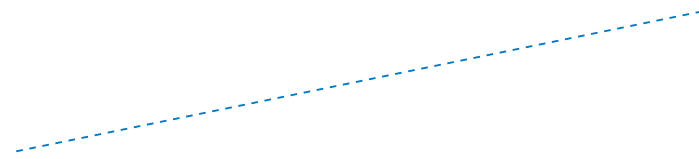
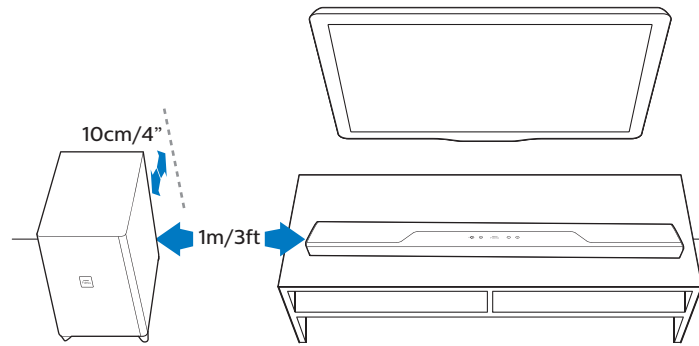
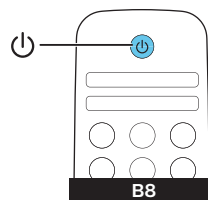
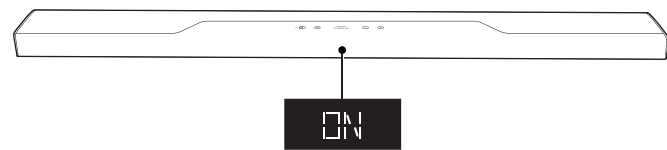
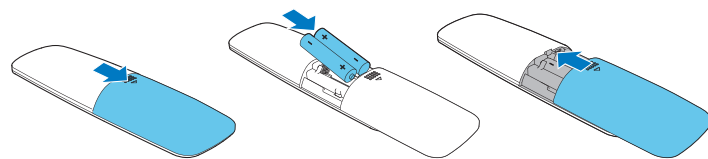
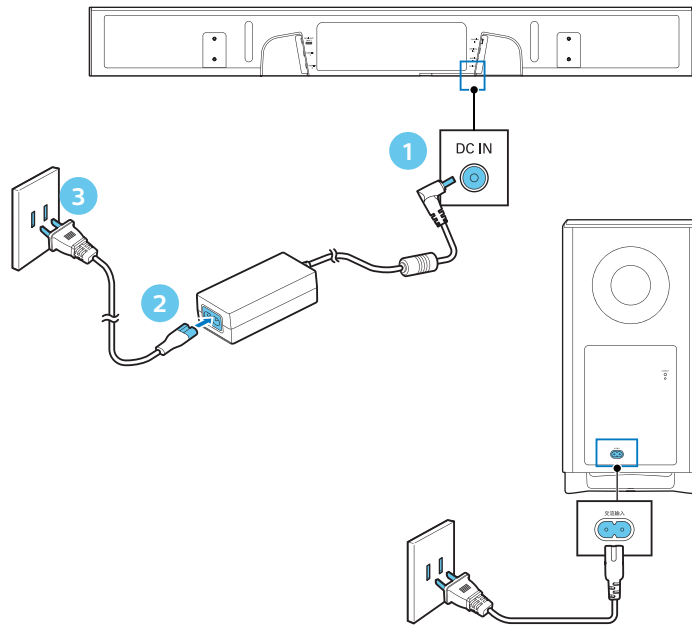
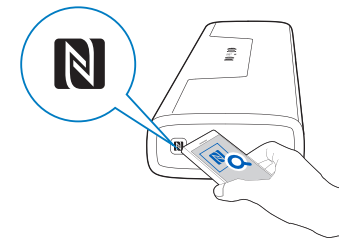
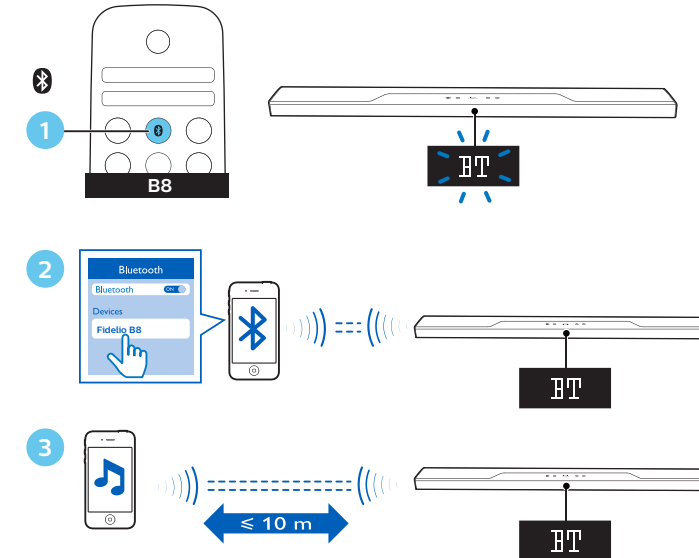
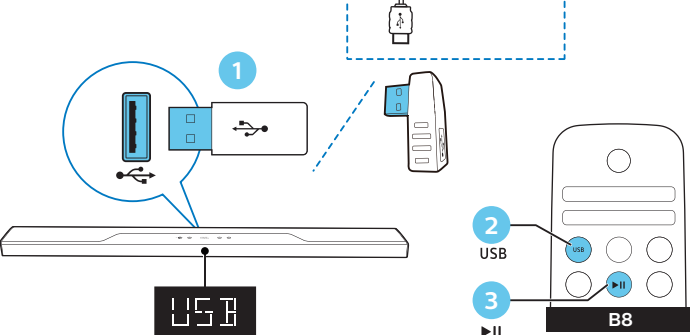
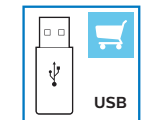
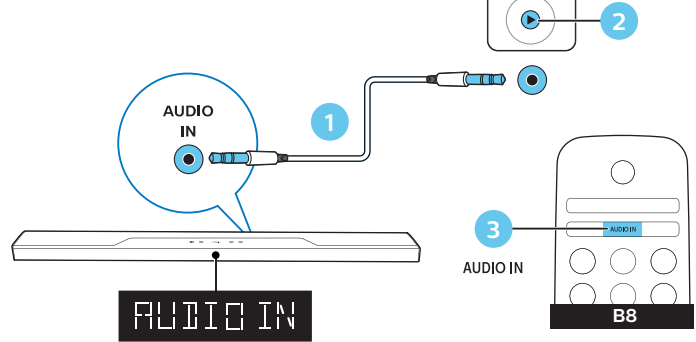
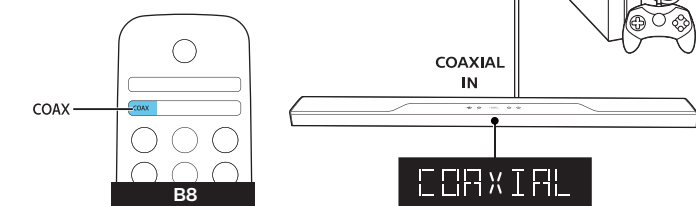
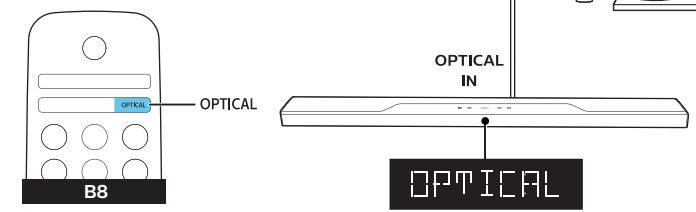
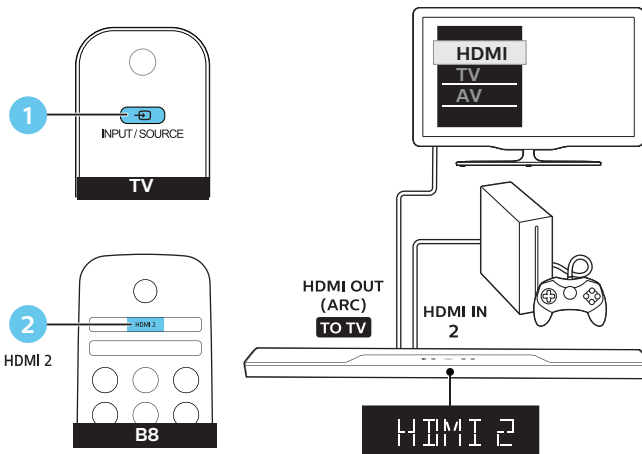
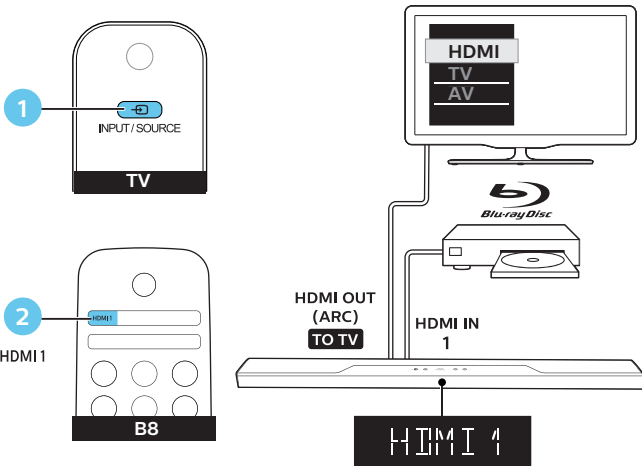
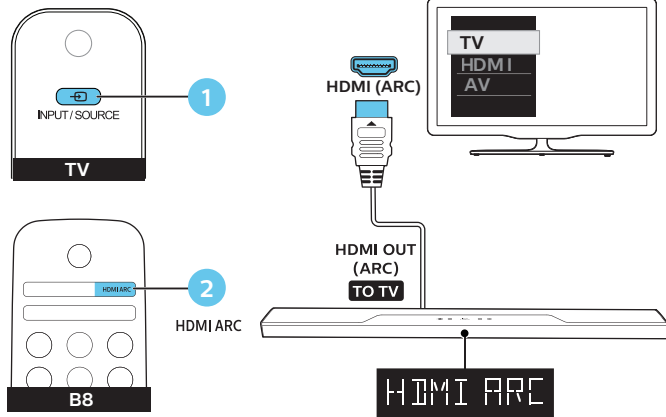
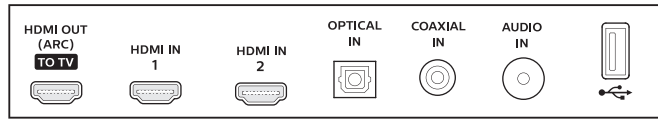


**ZH-CN** 使用产品前，请阅读所有随附的安全信息  
**EN** Before using your product, read all accompanying safety information

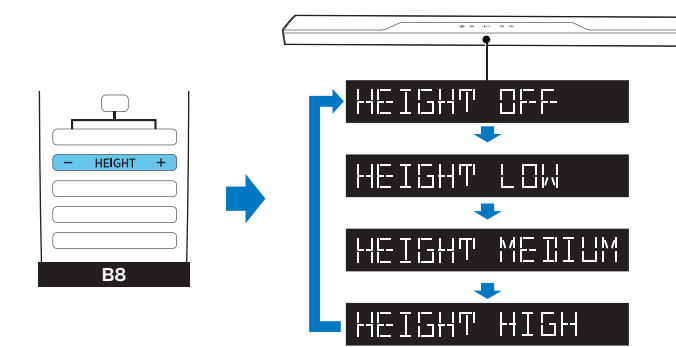
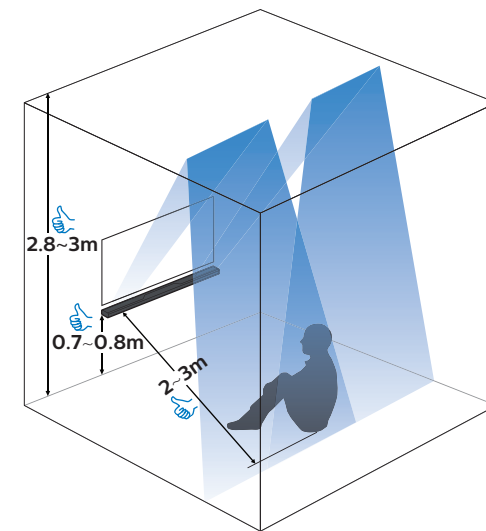


[www.philips.com/support](http://www.philips.com/support)





## DOLBY ATMOS®



## 快速操作指南



在以下网站上注册产品并获得支持  
[www.philips.com/support](http://www.philips.com/support)



(在重低音音箱上也有此二维码)  
 (You may also find the QR code on your subwoofer)



Specifications are subject to change without notice  
 2017 © Gibson Innovations Limited. All rights reserved.  
 This product has been manufactured by, and is sold under the responsibility of WOOX Innovations (Shanghai) Commercial Company Ltd., and WOOX Innovations (Shanghai) Commercial Company Ltd., is the warrantor in relation to this product.  
 Philips and the Philips Shield Emblem are registered trademarks of Koninklijke Philips N.V. and are used under license.

B8\_93\_QSG\_V1.0

