

Register your product and get support at
www.philips.com/welcome

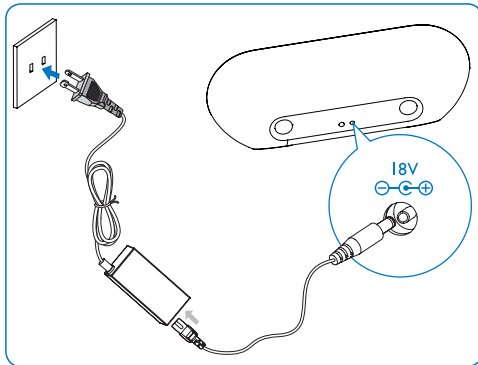
DS8550

Quick Start Guide



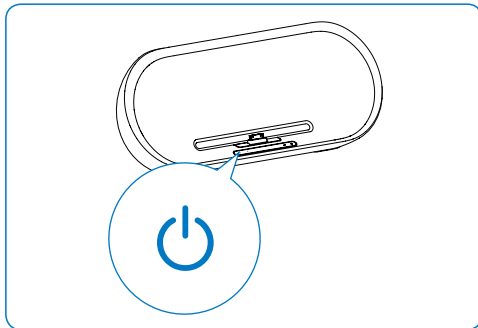
PHILIPS

A Connect power



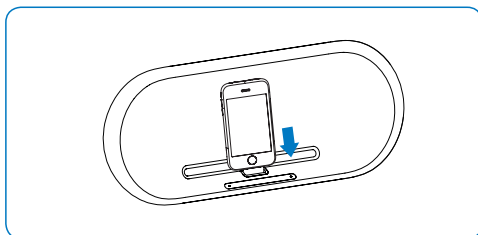
- 1 Fully insert the plugs from the speakers into the speaker sockets on the main unit.
- 2 Connect one end of the AC power cord to the AC adaptor.
- 3 Connect the other end of the AC power cord to the wall outlet.


B Turn on



- 1 Press  on the main unit.

C Play from iPod/iPhone/iPad



- 1 Place the iPod/iPhone/iPad in the dock.
- 2 Press  on iPod/iPhone/iPad.

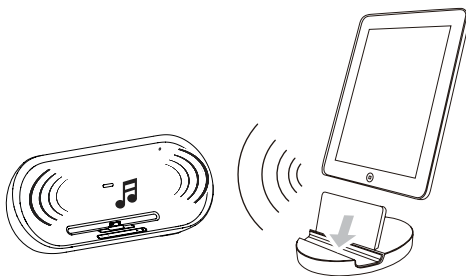
D Play from Bluetooth device

- 1 Press ***** to turn on Bluetooth.
- 2 Turn on Bluetooth function on iPod/iPhone/iPad.
- 3 When "PHILIPS DS8550" displays, select it to start connection.
- 4 When prompted for a password, enter "0000".
- 5 Press **▶||** on iPod/iPhone/iPad.
 - To turn off Bluetooth, press ***** again.



Tip

- While listening to iPad via Bluetooth, you can use the provided iPad stand to hold up your iPad.



E Play from an external device

- 1 Connect the supplied Aux-in link cable to:
 - the AUX IN jack (3.5mm) on the back of the unit.
 - the headphone jack on an external device.
- 2 Start to play the device (see the device user manual).



© 2010 Koninklijke Philips Electronics N.V.
All rights reserved.

