

Always there to help you

Register your product and get support at
www.philips.com/support

DCM3160



User manual

PHILIPS

Contents

1	Important	2
	Safety	2
	Hearing safety	3
	Notice	3
	Care for your product	4

2	Your Micro Music System	5
	Introduction	5
	What's in the box	5
	Overview of the main unit	6

3	Get started	8
	Connect speakers	8
	Connect FM antenna	8
	Connect power	8
	Prepare the remote control	9
	Power on	9
	Set the clock	9

4	Play	10
	Play from disc	10
	Play from USB	10
	Basic play operations	11
	Skip tracks	11
	Program tracks	11

5	Play iPod/iPhone	12
	Compatible iPod/iPhone	12
	Load the iPod/iPhone	12
	Listen to the iPod/iPhone	12
	Charge the iPod/iPhone	13
	Remove the iPod/iPhone	13

6	Listen to FM radio	14
	Tune to FM radio stations	14
	Program radio stations automatically	14
	Program radio stations manually	14
	Tune to a preset radio station	14

7	Other features	15
	Set the alarm timer	15
	Set sleep timer	15
	Listen to external audio device	15
	Adjust display brightness	16

8	Product information	17
	Specifications	17
	USB playability information	17
	Supported MP3 disc formats	18

9	Troubleshooting	19
----------	------------------------	-----------

1 Important

Safety

Read and understand all instructions before you use this micro music system. If damage is caused by failure to follow the instructions, the warranty does not apply.

Risk of electric shock or fire!

- Never remove the casing of the product.
- Never expose the product and accessories to rain or water. Never place liquid containers, such as vases, near the product. If liquids are spilt on or into the product, disconnect it from the power outlet immediately. Contact the Consumer Care to have the product checked before use.
- Never place the product and accessories near naked flames or other heat sources, including direct sunlight.
- Never insert objects into the ventilation slots or other openings on the product.
- Where the mains plug or an appliance coupler is used as the disconnect device, the disconnect device shall remain readily operable.
- Disconnect the product from the power outlet before lightning storms.
- When you disconnect the power cord, hold the plug securely, never the cable.
- Batteries (battery pack or batteries installed) shall not be exposed to excessive heat such as sunshine, fire or the like.

Risk of short circuit or fire!

- Before you connect the product to the power outlet, make sure that the power voltage matches the value printed on the back of the product. Never connect the product to the power outlet if the voltage is different.

- Never expose the remote control or batteries to rain, water, sunshine, or excessive heat.
- Avoid force coming onto power plugs. Loose power plugs can cause arcing or fire.
- Correctly install the battery with its polarity (+/- signs) as marked on the remote control.
- Danger of explosion if battery is incorrectly replaced. Replace only with the same or equivalent type.

Risk of injury or damage to the product!

- Visible and invisible laser radiation when open. Avoid exposure to beam.
- Do not touch the disc optical lens inside the disc compartment.
- Never place the product or any objects on power cords or on other electrical equipment.
- If the product is transported in temperatures below 5°C, unpack the product and wait until its temperature matches room temperature before connecting it to the power outlet.

Risk of overheating!

- Never install this product in a confined space. Always leave a space of at least four inches around the product for ventilation.
- Make sure that curtains or other objects never cover the ventilation slots on the product.

Risk of contamination!

- Remove the battery if it is exhausted or if the remote control is not to be used for an extended period of time.
- Batteries contain chemical substances, they should be disposed of properly.

Hearing safety



Listen at a moderate volume.

- Using headphones at a high volume can impair your hearing. This product can produce sounds in decibel ranges that may cause hearing loss for a normal person, even for exposure less than a minute. The higher decibel ranges are offered for those that may have already experienced some hearing loss.
- Sound can be deceiving. Over time your hearing 'comfort level' adapts to higher volumes of sound. So after prolonged listening, what sounds 'normal' can actually be loud and harmful to your hearing. To guard against this, set your volume to a safe level before your hearing adapts and leave it there.

To establish a safe volume level:

- Set your volume control at a low setting.
- Slowly increase the sound until you can hear it comfortably and clearly, without distortion.

Listen for reasonable periods of time:

- Prolonged exposure to sound, even at normally 'safe' levels, can also cause hearing loss.
- Be sure to use your equipment reasonably and take appropriate breaks.

Be sure to observe the following guidelines when using your headphones.

- Listen at reasonable volumes for reasonable periods of time.
- Be careful not to adjust the volume as your hearing adapts.
- Do not turn up the volume so high that you can't hear what's around you.
- You should use caution or temporarily discontinue use in potentially hazardous situations.

Notice

Any changes or modifications made to this device that are not expressly approved by WOOX Innovations may void the user's authority to operate the equipment.

Compliance



This product complies with the radio interference requirements of the European Community.

This apparatus includes this label:



Care of the environment



Your product is designed and manufactured with high quality materials and components, which can be recycled and reused.



When this crossed-out wheeled bin symbol is attached to a product it means that the product is covered by the European Directive 2002/96/EC.

Please inform yourself about the local separate collection system for electrical and electronic products.

Please act according to your local rules and do not dispose of your old products with your normal household waste. Correct disposal of your old product helps to prevent potential negative consequences for the environment and human health.



Your product contains batteries covered by the European Directive 2006/66/EC, which cannot be disposed with normal household waste. Please inform yourself about the local rules on separate collection of batteries because correct disposal helps to prevent negative consequences for the environmental and human health.

Environmental information

All unnecessary packaging has been omitted. We have tried to make the packaging easy to separate into three materials: cardboard (box), polystyrene foam (buffer) and polyethylene (bags, protective foam sheet.)

Your system consists of materials which can be recycled and reused if disassembled by a specialized company. Please observe the local regulations regarding the disposal of packaging materials, exhausted batteries and old equipment.

Trademark notice



“Made for iPod” and “Made for iPhone” mean that an electronic accessory has been designed to connect specifically to iPod or iPhone respectively, and has been certified by the developer to meet Apple performance standards. Apple is not responsible for the operation of this device or its compliance with safety and regulatory standards. Please note that

the use of this accessory with iPod or iPhone may affect wireless performance. iPod and iPhone are trademarks of Apple Inc., registered in the U.S. and other countries.



The making of unauthorized copies of copy-protected material, including computer programs, files, broadcasts and sound recordings, may be an infringement of copyrights and constitute a criminal offence. This equipment should not be used for such purposes.



- The type plate is located on the back of the product.

Care for your product

- Do not insert any objects other than discs into the disc compartment.
- Do not insert warped or cracked discs into the disc compartment.
- Remove the discs from the disc compartment if you are not using the product for an extended period of time.
- Only use microfiber cloth to clean the product.

2 Your Micro Music System

Congratulations on your purchase, and welcome to Philips! To fully benefit from the support that Philips offers, register your product at www.philips.com/welcome.

Introduction

With this unit, you can:

- enjoy audio from discs, USB devices, iPod, iPhone, and other external devices
- listen to radio stations

You can enrich sound output with these sound effects:

- Digital Sound Control (DSC)

The unit supports these media formats:

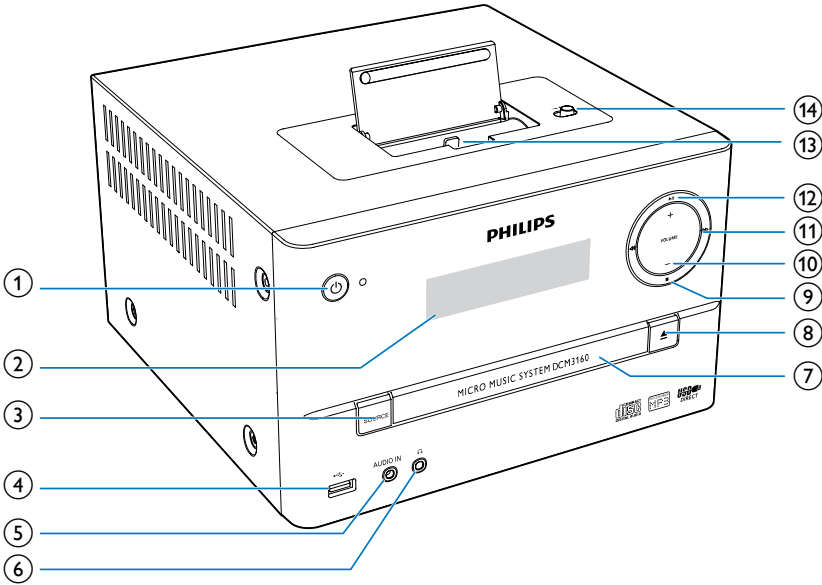









What's in the box

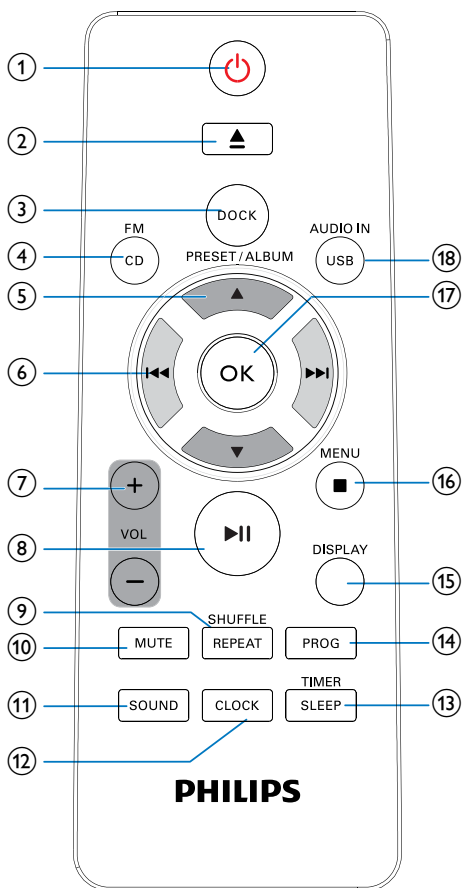
Check and identify the contents of your package:

- Main unit
- Remote control (with one AAA battery)
- Speaker boxes (×2)
- FM antenna
- Short user manual
- Safety and notice

Overview of the main unit



- ① 
 - Turn on the product.
 - Switch to standby mode or ECO power standby mode.
- ② **Display panel**
 - Show current status.
- ③ **SOURCE**
 - Select a source: DISC, USB, AUDIO IN, TUNER, or iPod/iPhone.
- ④ 
 - Connect USB storage devices.
- ⑤ **AUDIO IN**
 - Connect external audio devices.
- ⑥ 
 - Connect to a headphone with 3.5-mm connector.
- ⑦ **Disc compartment**
- ⑧ 
 - Open or close the disc compartment.
- ⑨ 
 - Stop play.
 - Erase a program.
 - Access the playlist of a docked iPod/iPhone.
- ⑩ **VOLUME +/-**
 - Adjust volume.
- ⑪ 
 - Skip to previous/next track.
 - Search within a track/disc.
 - Tune to a radio station.
 - Adjust time.
- ⑫ 
 - Start or pause play.
- ⑬ **Lightning or 30-pin connector**
- ⑭ **Toggle switch for lightning or 30-pin control**



- ① **⏻**
 - Turn on the product.
 - Switch to standby mode or ECO power standby mode.
- ② **⏏**
 - Eject the disc.
- ③ **DOCK**
 - Connect a compatible iPod/iPhone for music play.
- ④ **FM/ CD**
 - Select FM radio or CD source.

- ⑤ **PRESET/ALBUM ▲ / ▼**
 - Skip to the previous or next album.
 - Select a preset radio station.
 - Navigate through iPod/iPhone playlist.
- ⑥ **⏮ / ⏭**
 - Skip to the previous or next track.
 - Press and hold to search within a track.
 - Tune to a radio station.
- ⑦ **+ VOL -**
 - Increase or decrease the volume level.
- ⑧ **⏸**
 - Start, pause, or resume play.
- ⑨ **REPEAT/SHUFFLE**
 - Select a play mode.
- ⑩ **MUTE**
 - Mute or restore volume.
- ⑪ **SOUND**
 - Select a preset sound effect.
- ⑫ **CLOCK**
 - Set the clock.
- ⑬ **TIMER/SLEEP**
 - Set the alarm timer.
 - Set the sleep timer.
- ⑭ **PROG**
 - Program radio stations.
 - Program tracks that are stored in a disc or USB storage device.
- ⑮ **DISPLAY**
 - In standby mode, press to adjust the display brightness.
- ⑯ **■ / MENU**
 - Stop the play of music.
 - Erase a program.
 - Access the playlist of iPod/iPhone.
- ⑰ **OK**
 - Confirm the current option.
- ⑱ **USB/AUDIO IN**
 - Select USB or AUDIO IN source.

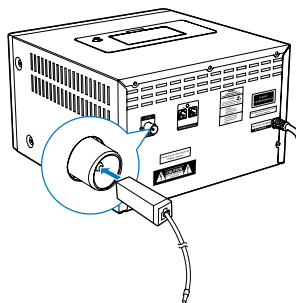
3 Get started

! Caution

- Use of controls or adjustments or performance of procedures other than herein may result in hazardous radiation exposure or other unsafe operation.

Always follow the instructions in this chapter in sequence.

Connect the supplied FM antenna to the **SPEAKER OUT** socket on the main unit.

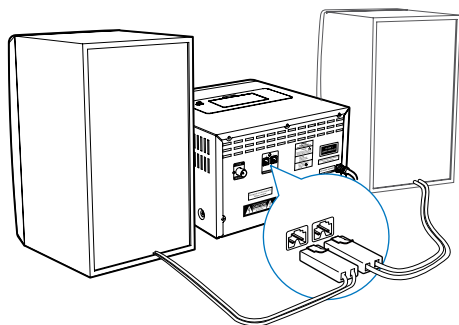


Connect speakers

☰ Note

- For optimal sound, use the supplied speakers only.
- Connect only speakers with impedance that is the same or higher than the supplied speakers. Refer to the Specifications section of this manual.

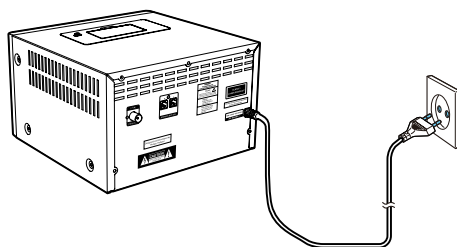
Insert the speaker wires completely into the speaker input sockets on the back of **DCM3160**.



Connect power

! Caution

- Risk of product damage! Ensure that the power supply voltage corresponds to the voltage printed on the back or the underside of the unit.
- Before you connect the AC power cord, ensure that you have completed all other connections.



Connect FM antenna

✱ Tip

- For optimal reception, fully extend and adjust the position of the antenna.
- For better FM stereo reception, connect an outdoor FM antenna to the **SPEAKER OUT** socket.

Connect the power cable to the wall socket.

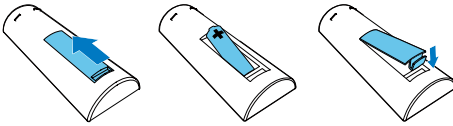
Prepare the remote control

! Caution

- Risk of product damage! When the remote control is not used for long periods, remove the batteries.

To insert the remote control battery:

- 1 Open the battery compartment.
- 2 Insert the supplied AAA battery with correct polarity (+/-) as indicated.
- 3 Close the battery compartment.



Power on

Press ϕ .

- ↳ **DCM3160** switches to the last selected source.

Switch to standby mode

Press ϕ again to switch **DCM3160** to standby mode.

- ↳ The clock (if set) is displayed on the panel.

- In standby mode, press ϕ to switch between working mode and standby mode.

≡ Note

- DCM3160 switches to Standby mode after 15 minutes inactive.

Switch to ECO power standby mode

Press and hold ϕ for more than two seconds.

- ↳ The red ECO power standby indicator turns on.
- In Eco power standby mode, press ϕ to switch between working mode and ECO power standby mode.

≡ Note

- DCM3160 switches to ECO power Standby mode after 15 minutes in standby mode.

Switch between standby mode and ECO power standby mode:

- Press and hold ϕ for more than two seconds.

Set the clock

- 1 In standby mode, press and hold **CLOCK** for more than two seconds to enter the clock setting mode.
↳ [24 HOUR] or [12 HOUR] is displayed.
- 2 Press **◀◀ / ▶▶** to select 24 or 12 hour format, and then press **CLOCK**.
↳ The hour digits begin to blink.
- 3 Press **◀◀ / ▶▶** to set the hour, and then press **CLOCK**.
↳ The minute digits begin to blink.
- 4 Press **◀◀ / ▶▶** to set the minute, and then press **CLOCK**.
↳ The set clock is displayed.

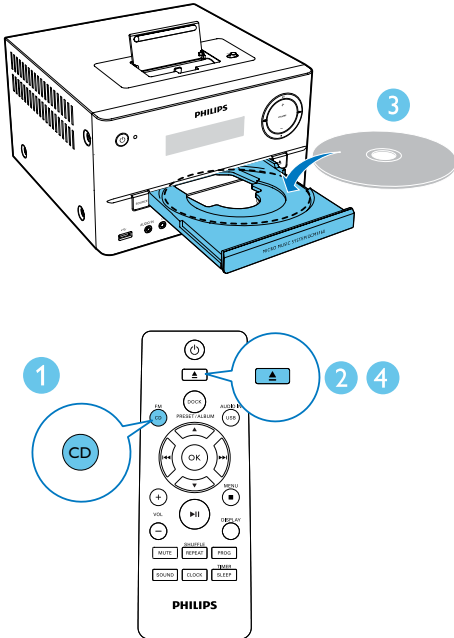
≡ Note

- To view clock information in working mode, press **CLOCK**.
- If no button is pressed in 90 seconds during setting, **DCM3160** exits clock setting without saving earlier operations.

4 Play

Play from disc

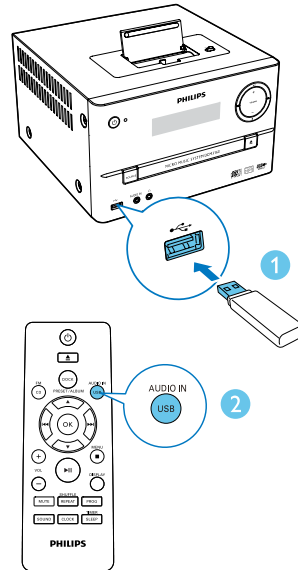
- 1 Press **FM/ CD** to select the CD source.
- 2 Press **▲** to open the disc compartment.
- 3 Insert a disc with the label side up.
- 4 Press **▲** to close the disc compartment.
 - ↳ Play starts automatically.
 - ↳ If not, press **◀◀ / ▶▶** to select a track, and then press **▶||**.



Play from USB

Ensure that the USB device contains playable audio contents for supported formats.

- 1 Insert the USB device into the USB socket.
- 2 Press **USB/AUDIO IN** to select the USB source.
 - ↳ Play starts automatically.
 - ↳ If not, press **PRESET/ALBUM** to select a folder and **◀◀ / ▶▶** to select a file. Then press **OK** to start play.



Basic play operations

You can control play through following operations.

▶	Start, pause, or resume play.
■	Stop play.
▲ / ▼	Select an album or a folder.
◀◀ / ▶▶	Press to skip to the previous or next track. Press and hold to search backward/forward within a track.
REPEAT/ SHUFFLE	To select a repeat play mode: [REPEAT ONE] (repeat one): play the current track repeatedly. [REPEAT ALB] (repeat album): play the current album repeatedly. [REPEAT ALL] (repeat all): play all tracks repeatedly. [SHUFFLE] (shuffle): play all tracks randomly. [OFF]: Return to normal play.
VOL +/-	Increase or decrease the volume.
MUTE	Mute or restore sound.
SOUND	Enrich sound effect with DSC: balanced, clear, powerful, warm, and bright.
DISPLAY	Adjust display brightness in standby mode.

Skip tracks

When playing a CD:

Press ◀◀ / ▶▶ to select tracks.

When playing an MP3 disc and USB:

- 1 Press ▲ / ▼ to select an album or a folder.
- 2 Press ◀◀ / ▶▶ to select a track or a file.

Program tracks

This function allows you to program 20 tracks in the desired sequence.

- 1 In stop mode, press **PROG** to activate the program mode.
↳ [PROG] (program) and [01 PR 01] are displayed.
- 2 For MP3 tracks, press ▲ / ▼ to select an album.
- 3 Press ◀◀ / ▶▶ to select a track, and then press **PROG** to confirm.
- 4 Repeat steps 2 to 3 to program more tracks.
- 5 Press ▶|| to play the programmed tracks.
↳ During play, [PROG] (program) is displayed.

To erase the program

Press ■ twice.

5 Play iPod/iPhone

You can enjoy audio from iPod/iPhone through this unit.

Compatible iPod/iPhone

With the integrated dual docks, **DCM3160** supports the following iPod, and iPhone models:

Made for (lightning connector):

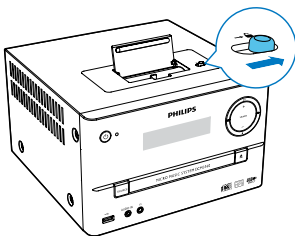
- iPhone 5S
- iPhone 5C
- iPod nano (7th generation)
- iPod touch (5th generation)

Also made for (30-pin connector):

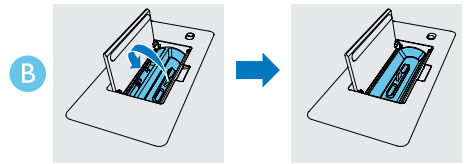
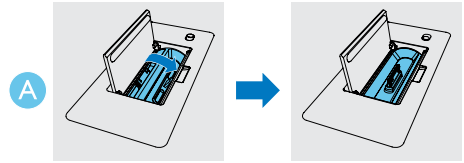
- iPhone 4S
- iPhone 4
- iPhone 3GS
- iPhone 3G
- iPhone
- iPod nano (2nd/3rd/4th/5th/6th generation)
- iPod classic
- iPod touch (1st/2nd/3rd/4th generation)

Load the iPod/iPhone

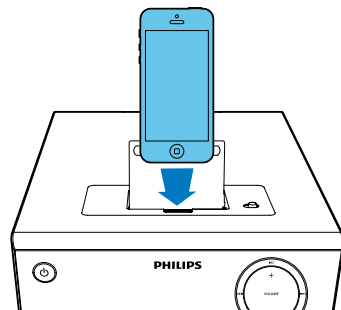
- 1 Lift up the dock cover.
- 2 Slide the →🔒 switch to the right.
↳ The dock swivels and the alternate connector is accessible.



- 3 Select your desired connector and press it down until a click sound.
↳ The →🔒 switch slides to the left.



- 4 Dock your iPod/iPhone.

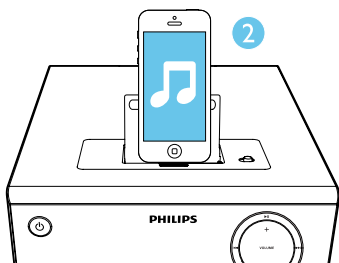


Listen to the iPod/iPhone

Note

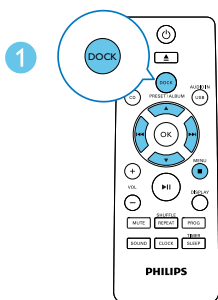
- Make sure that your iPod/iPhone has been loaded securely.

- 1 Press **DOCK** to select the dock source.
- 2 Play audio on your iPod/iPhone.



Remove the iPod/iPhone

- Pull the iPod/iPhone out of the dock.



- To pause/resume play, press **▶||**.
- To skip to a track, press **◀◀ / ▶▶**.
- To search during play, press and hold **◀◀ / ▶▶**, then release to resume normal play.
- To navigate in the menu: press **MENU/■**, and press **▲ / ▼ / ◀◀ / ▶▶** to select, and then press **OK** to confirm.

Note

- **MENU/■ / ▲ / ▼** works only for non-touch screen iOS devices.

Charge the iPod/iPhone

When **DCM3160** is connected to power, the docked iPod/iPhone begins to charge automatically.

6 Listen to FM radio

Tune to FM radio stations

Note

- Ensure that you have connected and fully extended the supplied FM antenna.

- 1 Press **FM/ CD** repeatedly to select the FM radio source.
- 2 Press and hold **◀◀ / ▶▶** until the frequency starts to change.
↳ The FM tuner tunes to a station with strong reception automatically.
- 3 Repeat steps 2-3 to tune to more stations.

To tune to a weak station:

Press **◀◀ / ▶▶** repeatedly until you find optimal reception.

Program radio stations automatically

Note

- You can program a maximum of 20 preset radio stations.

In FM tuner mode, press **PROG** for 3 seconds to activate automatic programming.

↳ **[AUTO SCAN]** (auto scan) is displayed.

↳ **DCM3160** stores all the FM radio stations automatically and then broadcasts the first preset radio station.

Program radio stations manually

Note

- You can program a maximum of 20 preset radio stations.

- 1 Tune to a radio station.
- 2 Press **PROG** to activate programming mode.
- 3 Press **▲ / ▼** to select a number from 1–20 for this radio station, then press **PROG** to confirm.
↳ The preset number and the frequency of the preset station are displayed.
- 4 Repeat steps 1-3 to program other stations.

Note

- To overwrite a programmed station, store another station in its place.

Tune to a preset radio station

- 1 Press **▲ / ▼** to select a preset number:

7 Other features

Set the alarm timer

DCM3160 can be used as an alarm clock. You can select the disc, iPod/iPhone library, FM radio station, or .mp3 files stored on a USB storage device as alarm source.

Note

- Make sure that you have set the clock correctly.
- If the selected alarm source is unavailable, **DCM3160** switches to FM mode automatically.

- 1 In normal standby mode, press and hold **SLEEP/TIMER** for two seconds.
↳ **[SET TIMER]** is displayed.
- 2 Press **◀▶** to select an alarm source (DISC, TUNER, USB, or Dock), and then press **SLEEP/TIMER** to confirm.
↳ The hour digits blink.
- 3 Press **◀▶** repeatedly to set the hour, and then press **SLEEP/TIMER** to confirm.
↳ The minute digits blink.
- 4 Press **◀▶** to set the minute, and then press **SLEEP/TIMER** to confirm.
↳ **VOL_XX** (XX indicates the volume level of alarm) blinks.
- 5 Press **◀▶** to set the alarm volume, and then press **SLEEP/TIMER** to confirm.

Stop an alarm

When an alarm rings, press **⏻** or switch to another mode to stop it.

Note

- If you do not stop an alarm, it keeps ringing for 30 minutes, and then **DCM3160** automatically switches to normal standby mode.

Activate/deactivate alarm timer

In standby mode, press **SLEEP/TIMER** repeatedly to activate or deactivate timer.
↳ If timer is activated, **⌚** is displayed.

Set sleep timer

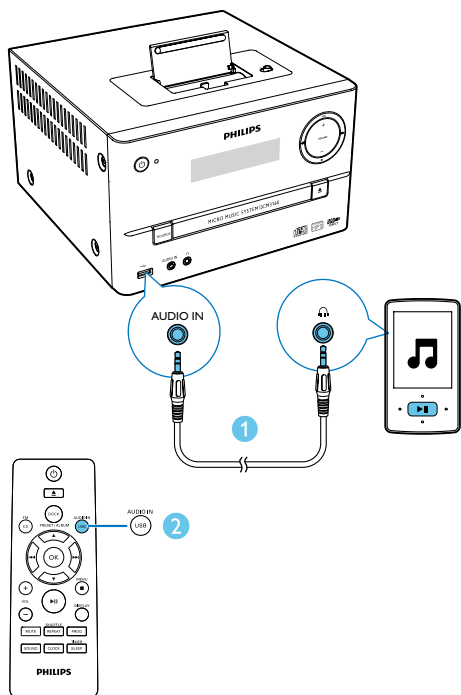
When **DCM3160** is turned on, press **SLEEP/TIMER** repeatedly to select a time period (in minutes).
↳ When sleep timer is activated, **zZ** is displayed.
↳ To deactivate sleep timer, press **SLEEP/TIMER** again until **[SLEEP OFF]** appears.

Listen to external audio device

You can listen to an external audio device such as MP3 player through **DCM3160**.

- 1 Connect an audio input cable with 3.5 mm plug on both ends between
 - the **AUDIO IN** socket on the back panel of this product, and
 - the headphone socket on the external device.
- 2 Press **USB/AUDIO IN** repeatedly to switch to the **AUDIO IN** source.

- 3 Play audio on the external device (refer to its user manual).



Adjust display brightness

You can press [DISPLAY] repeatedly in standby mode to select the following brightness levels.

- [DIM 1]
- [DIM 2]
- [DIM OFF]

8 Product information

Note

- Product information is subject to change without prior notice.

Specifications

Amplifier

Maximum Output Power	120 W
Frequency Response	60 Hz - 16 kHz; +3 dB
Signal to Noise Ratio	>70 dB
Aux Input	800 mV RMS

Speakers

Speaker Impedance	4 ohm
Speaker Driver	4" Woofer; 20mm dome tweeter
Sensitivity	>83 dB/m/W

Tuner (FM)

Tuning Range	87.5-108 MHz
Tuning grid	50 KHz
Sensitivity	
- Mono, 26dB S/N Ratio	<22 dBu
- Stereo, 46dB S/N Ratio	<45 dBu
Search Selectivity	<30 dBu
Total Harmonic Distortion	<3%
Signal to Noise Ratio	>45 dB

USB

USB Direct Version	2.0 full speed
USB 5 V Power	≤500 mA

Disc

Laser Type	Semiconductor
Disc Diameter	12 cm/8 cm
Support Disc	CD-DA, CD-R, CD-RW, MP3-CD
Audio DAC	24 Bits/44.1 kHz
Total Harmonic Distortion	<1% (1 kHz)
Frequency Response	60 Hz - 16 kHz; ±3 dB
S/N Ratio	>70 dBA

General information

AC power	100-240 V~, 50/60 Hz
Operation Power Consumption	58 W
Eco Standby Power Consumption	<0.5 W
Dimensions	
- Main Unit (W x H x D)	230 x 235 x 196 mm
- Speaker Box (W x H x D)	140 x 304 x 215 mm
Weight	
- Main Unit	2.3 kg
- Speaker Box	2.65 kg x 2

USB playability information

Compatible USB devices:

- USB flash memory (USB 2.0 or USB1.1)
- USB flash players (USB 2.0 or USB1.1)
- memory cards (requires an additional card reader to work with this unit)

Supported formats:

- USB or memory file format FAT12, FAT16, FAT32 (sector size: 512 bytes)
- MP3 bit rate (data rate): 32-320 Kbps and variable bit rate
- WMA v9 or earlier

- Directory nesting up to a maximum of 8 levels
- Number of albums/ folders: maximum 99
- Number of tracks/titles: maximum 999
- ID3 tag v2.0 or later
- File name in Unicode UTF8 (maximum length: 64 bytes)

Unsupported formats:

- Empty albums: an empty album is an album that does not contain MP3/WMA files, and is not be shown in the display.
- Unsupported file formats are skipped. For example, Word documents (.doc) or MP3 files with extension .dlf are ignored and not played.
- AAC, WAV, PCM audio files
- DRM protected WMA files (.wav, .m4a, .m4p, .mp4, .aac)
- WMA files in Lossless format

Supported MP3 disc formats

- ISO9660, Joliet
- Maximum title number: 512 (depending on file name length)
- Maximum album number: 255
- Supported sampling frequencies: 32 kHz, 44.1kHz, 48 kHz
- Supported Bit-rates: 32~320 (kbps), variable bit rates

9 Troubleshooting



Warning

- Never remove the casing of this apparatus.

To keep the warranty valid, never try to repair the system yourself.

If you encounter problems when using this apparatus, check the following points before requesting service. If the problem remains unsolved, go to the Philips web site (www.philips.com/welcome). When you contact Philips, ensure that the apparatus is nearby and the model number and serial number are available.

No power

- Ensure that the AC power cord of the unit is connected properly.
- Ensure that there is power at the AC outlet.
- As a power-saving feature, the system switches off automatically 15 minutes after track play reaches the end and no control is operated.

No sound or poor sound

- Adjust the volume.
- Disconnect the headphones.
- Check if the speakers are connected correctly.

No response from the unit

- Disconnect and reconnect the AC power plug, then turn on the unit again.
- As a power-saving feature, the system switches off automatically 15 minutes after track play reaches the end and no control is operated.

Remote control does not work

- Before you press any function button, first select the correct source with the remote control instead of the main unit.
- Reduce the distance between the remote control and the unit.

- Insert the battery with its polarities (+/- signs) aligned as indicated.
- Replace the battery.
- Aim the remote control directly at the sensor on the front of the unit.

No disc detected

- Insert a disc.
- Check if the disc is inserted upside down.
- Wait until the moisture condensation at the lens has cleared.
- Replace or clean the disc.
- Use a finalized CD or correct format disc.

Cannot display some files in USB device

- The number of folders or files in the USB device has exceeded a certain limit. This phenomenon is not a malfunction.
- The formats of these files are not supported.

USB device not supported

- The USB device is incompatible with the unit. Try another one.

Poor radio reception

- Increase the distance between the unit and your TV or VCR.
- Fully extend the FM antenna.
- Connect an outdoor FM antenna instead.

Timer does not work

- Set the clock correctly.
- Switch on the timer.

Clock/timer setting erased

- Power has been interrupted or the power cord has been disconnected.
- Reset the clock/timer.



Specifications are subject to change without notice.
2014 © WOOX Innovations Limited. All rights reserved.
Philips and the Philips' Shield Emblem are registered trademarks of Koninklijke Philips N.V. and are used by WOOX Innovations Limited under license from Koninklijke Philips N.V.

DCM3160_12_UM_V2.0

