

# Always there to help you

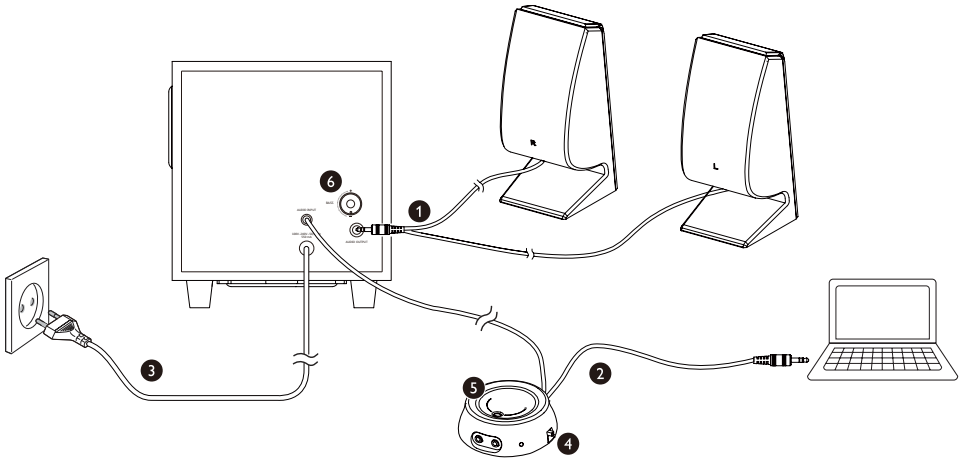
Register your product and get support at  
[www.philips.com/welcome](http://www.philips.com/welcome)

SPA4355/12



# User manual

# PHILIPS



# Contents

---

<b>1</b>	<b>Important</b>	<b>2</b>
	Safety	2
	Notice	2

---

<b>2</b>	<b>Your multimedia speaker</b>	<b>4</b>
----------	--------------------------------	----------

---

<b>3</b>	<b>Use your multimedia speaker</b>	<b>5</b>
	Optional function	5

---

<b>4</b>	<b>Product information</b>	<b>6</b>
----------	----------------------------	----------

---

<b>5</b>	<b>Troubleshooting</b>	<b>7</b>
----------	------------------------	----------

# 1 Important

## Safety

### Important safety instructions

- Read and follow all these instructions.
- The product shall not be exposed to dripping or splashing and no objects filled with liquids, such as vases, shall be placed on the product.
- To completely disconnect the power input, the mains plug of the product shall be disconnected from the mains.
- The mains plug of the product should not be obstructed or should be easily accessed during intended use.
- No naked flame sources, such as lighted candles, shall be placed on the products.
- Keep this product away from direct sunlight, naked flames or other heat sources.
- Unplug the product from the power outlet during lightning storms or when unused for long periods of time.
- When you disconnect the power cord, always pull the plug instead of the cable.
- Only use attachments/accessories specified by the manufacturer.
- Make sure that you always have easy access to the power cord, plug, or adaptor to disconnect this product from the power.
- Where the MAINS plug or an appliance coupler is used as the disconnect device, the disconnect device shall remain readily operable.



### Warning

- Never remove the casing of this product.
- Never place this product on other electrical equipment.

### Hearing safety



### Caution



- To prevent possible hearing damage, do not listen at high volume levels for long periods. Set the volume to a safe level. The louder the volume, the shorter is the safe listening time.

### Be sure to observe the following guidelines when using your headphones.

- Listen at reasonable volumes for reasonable periods of time.
- Be careful not to adjust the volume continuously upwards as your hearing adapts.
- Do not turn up the volume so high that you can't hear what's around you.
- You should use caution or temporarily discontinue use in potentially hazardous situations.
- Excessive sound pressure from earphones and headphones can cause hearing loss.

## Notice

Any changes or modifications made to this device that are not expressly approved by Philips Consumer Lifestyle may void the user's authority to operate the equipment.

This product complies with the radio interference requirements of the European Community.



### Disposal of your old product

When this crossed-out wheeled bin symbol is attached to a product it means that the product is covered by the European Directive 2002/96/EC. Please inform yourself about the local separate collection system for electrical and electronic products.



Please act according to your local rules and do not dispose of your old products with your normal household waste.

Correct disposal of your old product helps to prevent potential negative consequences for the environment and human health.

## 2 Your multimedia speaker

Congratulations on your purchase and welcome to Philips!

To fully benefit from the support that Philips offers, register your product at [www.philips.com/welcome](http://www.philips.com/welcome).


# 3 Use your multimedia speaker

- 1 Insert the speaker plug into audio output socket ( ① ).
- 2 Connect the audio input plug on remote control to the audio output socket of your computer ( ② ).
- 3 Connect the AC plug to AC power socket ( ③ ).
- 4 Turn the power button on remote control to **ON** ( ④ ).  
↳ Amber LED on the remote control is on.
- 5 Adjust the volume by the remote control ( ⑤ ) or by the computer application.
- 6 Rotate **BASS** knob to adjust the bass ( ⑥ ).
- 7 After use, turn the power button on remote control to **OFF** and unplug.

---

## Optional function

- **To listen through a headphone:**

Connect a headphone (not supplied) to the  socket.

- **To play music from an external audio device such as an MP3 player:**

- 1 Connect an MP3 link cable (not supplied) to the **AUX** socket and the headphone socket on the device.
- 2 Play music from the device.

# 4 Product information

## AC power

---

Model	SPA4355
Input	100V-240~ 50/60Hz, 550mA

---



# 5 Troubleshooting

To keep the warranty valid, never try to repair the system yourself.

If you encounter problems when using the product, check the following points before requesting service. If the problem remains unsolved, register your product and get support at [www.philips.com/support](http://www.philips.com/support).

- Make sure that the speakers are correctly installed.
- Make sure the LED lights up.



Specifications are subject to change without notice  
© 2012 Koninklijke Philips Electronics N.V.  
All rights reserved.

SPA4355\_12\_UM\_V3.0

