

# Always there to help you

Register your product and get support at  
[www.philips.com/support](http://www.philips.com/support)

HTL1180B



## User manual

# PHILIPS



# Contents

---

<b>1</b>	<b>Important</b>	<b>2</b>
	Help and support	2
	Safety	2
	Care for your product	3
	Care of the environment	3

---

<b>2</b>	<b>Your SoundBar</b>	<b>4</b>
	Main unit	4
	Remote control	4
	Connectors	5

---

<b>3</b>	<b>Connect</b>	<b>6</b>
	Placement	6
	Connect audio from TV and other devices	6

---

<b>4</b>	<b>Use your SoundBar</b>	<b>7</b>
	Adjust the volume	7
	Choose your sound	7
	MP3 player	8
	USB storage devices	9
	Auto standby	9
	Apply factory settings	9
	Update software	9

---

<b>5</b>	<b>Wall mount</b>	<b>10</b>
----------	-------------------	-----------

---

<b>6</b>	<b>Product specifications</b>	<b>10</b>
----------	-------------------------------	-----------

---

<b>7</b>	<b>Troubleshooting</b>	<b>11</b>
----------	------------------------	-----------

# 1 Important

Read and understand all instructions before you use your product. If damage is caused by failure to follow instructions, the warranty does not apply.

---

## Help and support

For extensive online support, visit [www.philips.com/support](http://www.philips.com/support) to:

- download the user manual and the quick start guide
- watch video tutorials (available only for selected models)
- find answers to frequently answered questions (FAQs)
- email us a question
- chat with our support representative.

Follow the instructions on the website to select your language, and then enter your product model number.

Alternatively, you can contact Consumer Care in your country. Before you contact, note down the model number and serial number of your product. You can find this information on the back or bottom of your product.

---

## Safety

### **Risk of electric shock or fire!**

- Before you make or change any connections, make sure that all devices are disconnected from the power outlet.
- Never expose the product and accessories to rain or water. Never place liquid containers, such as vases, near the product. If liquids are spilt on or into the product, disconnect it from the power outlet immediately. Contact Consumer Care to have the product checked before use.

- Never place the product and accessories near naked flames or other heat sources, including direct sunlight.
- Never insert objects into the ventilation slots or other openings on the product.
- Where the mains plug or an appliance coupler is used as the disconnect device, the disconnect device shall remain readily operable.
- Batteries (battery pack or batteries installed) shall not be exposed to excessive heat such as sunshine, fire or the like.
- Disconnect the product from the power outlet before lightning storms.
- When you disconnect the power cord, always pull the plug, never the cable.

### **Risk of short circuit or fire!**

- For identification and supply ratings, see the type plate at the back or bottom of the product.
- Before you connect the product to the power outlet, ensure that the power voltage matches the value printed on the back or bottom of the product. Never connect the product to the power outlet if the voltage is different.

### **Risk of injury or damage to this product!**

- If the product is transported in temperatures below 5°C, unpack the product and wait until its temperature matches room temperature before connecting it to the power outlet.
- Parts of this product can be made of glass. Handle with care to avoid injury and damage.

### **Risk of overheating!**

- Never install this product in a confined space. Always leave a space of at least four inches around the product for ventilation. Ensure curtains or other objects never cover the ventilation slots on the product.

### **Risk of contamination!**

- Do not mix batteries (old and new or carbon and alkaline, etc.).

- Danger of explosion if batteries are incorrectly replaced. Replace only with the same or equivalent type.
- Remove batteries if they are exhausted or if the remote control is not to be used for a long time.
- Batteries contain chemical substances, they should be disposed of properly.

#### **Risk of swallowing batteries!**

- The product/remote control may contain a coin/button type battery, which can be swallowed. Keep the battery out of reach of children at all times! If swallowed, the battery can cause serious injury or death. Severe internal burns can occur within two hours of ingestion.
- If you suspect that a battery has been swallowed or placed inside any part of the body, seek immediate medical attention.
- When you change the batteries, always keep all new and used batteries out of reach of children. Ensure that the battery compartment is completely secure after you replace the battery.
- If the battery compartment cannot be completely secured, discontinue use of the product. Keep out of reach of children and contact the manufacturer.



This is CLASS II apparatus with double insulation, and no protective earth provided.

---

## Care of the environment

### Disposal of your old product



Your product is designed and manufactured with high quality materials and components, which can be recycled and reused.

Do not throw away the product with the normal household waste at the end of its life, but hand it in at an official collection point or recycling. By doing this, you help to preserve the environment.

---

## Care for your product

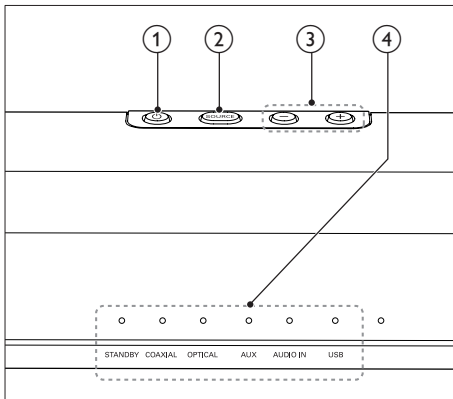
Use only microfiber cloth to clean the product.

## 2 Your SoundBar

Congratulations on your purchase, and welcome to Philips! To fully benefit from the support that Philips offers, register your SoundBar at [www.philips.com/welcome](http://www.philips.com/welcome).

### Main unit

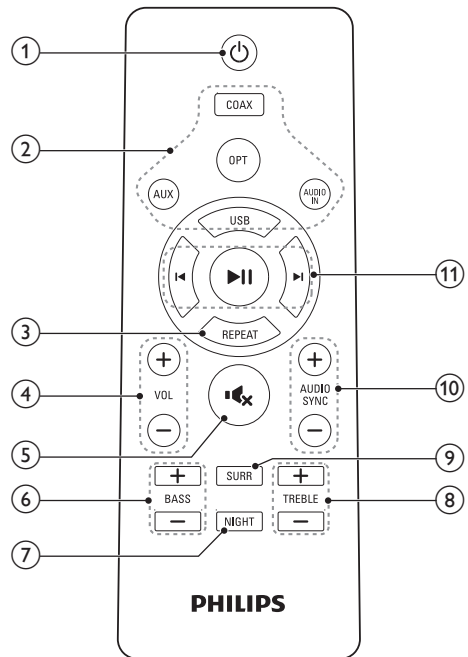
This section includes an overview of the main unit.



- ① Switch the SoundBar on or to standby.
- ② **SOURCE**  
Select an input source for the SoundBar.
- ③ **Volume+/-**  
Increase or decrease volume.
- ④ **LED indicators**
  - **STANDBY:** Lights up when the SoundBar is in standby.
  - **COAXIAL:** Lights up when you switch to coaxial input source.
  - **OPTICAL:** Lights up when you switch to optical input source.
  - **AUX:** Lights up when you switch to analog input source.
  - **AUDIO IN:** Lights up when you switch to audio input source (3.5mm jack).
  - **USB:** Lights up when you switch to USB source.

### Remote control

This section includes an overview of the remote control.

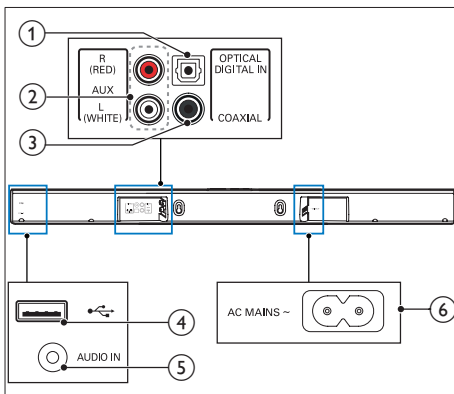


- ① (**Standby-On**)  
Switch the SoundBar on or to standby.
- ② **Source buttons**
  - **COAX:** Switch your audio source to the coaxial connection.
  - **OPT:** Switch your audio source to the optical connection.
  - **AUX:** Switch your audio source to the AUX connection.
  - **AUDIO IN:** Switch your audio source to the MP3 connection (3.5mm jack).
  - **USB:** Switch your audio source to the USB connection.
- ③ **REPEAT**  
Select or turn off repeat mode in USB mode.

- ④ **+/- (Volume)**  
Increase or decrease volume.
- ⑤ **Mute**  
Mute or restore volume.
- ⑥ **BASS +/-**  
Increase or decrease bass.
- ⑦ **NIGHT**  
Turn night mode on or off.
- ⑧ **TREBLE +/-**  
Increase or decrease treble.
- ⑨ **SURR**  
Toggle between stereo and virtual surround sound.
- ⑩ **AUDIO SYNC +/-**  
Applicable to **COAXIAL (COAX)** and **OPTICAL (OPT)** sources only. Increase or decrease audio delay.
- ⑪ **Play buttons**
  - ▶|| : Play, pause or resume play in USB mode.
  - ◀ / ▶ : Skip to the previous or next track in USB mode.
- ① **DIGITAL IN-OPTICAL**  
Connect to an optical audio output on the TV or a digital device.
- ② **AUX**  
Connect to an analog audio output on the TV or an analog device.
- ③ **COAXIAL**  
Connect to a coaxial audio output on the TV or a digital device.
- ④ **USB**  
Audio input from a USB storage device.
- ⑤ **AUDIO IN**  
Audio input from, for example, an MP3 player (3.5mm jack).
- ⑥ **AC MAINS~**  
Connect to the power supply.

## Connectors

This section includes an overview of the connectors available on your SoundBar.



## 3 Connect

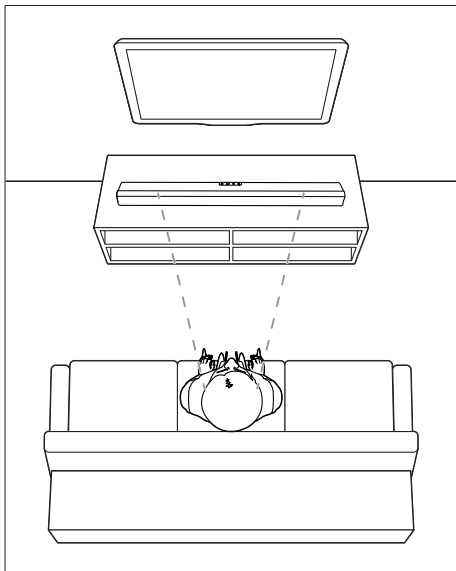
This section helps you connect your SoundBar to a TV and other devices.  
For information about the basic connections of your SoundBar and accessories, see the quick start guide.

### Note

- For identification and supply ratings, refer to the type plate at the back or bottom of the product.
- Before you make or change any connections, make sure that all devices are disconnected from the power outlet.

## Placement

Place your Soundbar as shown below.



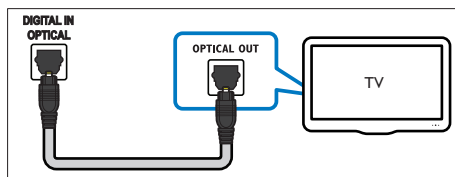
## Connect audio from TV and other devices

Play audio from TV or other devices through your Soundbar.

Use the best quality connection available on your TV and other devices.

### Option 1: Connect audio through a digital optical cable

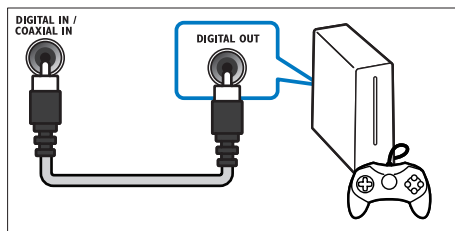
Best quality audio



- 1 Using an optical cable, connect the **OPTICAL** connector on your SoundBar to the **OPTICAL OUT** connector on the TV or other device.
  - The digital optical connector might be labeled **SPDIF** or **SPDIF OUT**.

### Option 2: Connect audio through a digital coaxial cable

Best quality audio

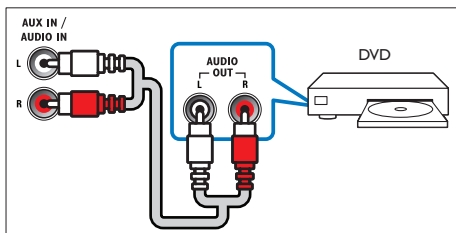


- 1 Using a coaxial cable, connect the **COAXIAL** connector on your SoundBar to the **COAXIAL/DIGITAL OUT** connector on the TV or other device.
  - The digital coaxial connector might be labeled **DIGITAL AUDIO OUT**.

---

### Option 3: Connect audio through analog audio cables

#### Basic quality audio



- 1 Using an analog cable, connect the **AUX** connectors on your SoundBar to the **AUDIO OUT** connectors on the TV or other device.

## 4 Use your SoundBar

This section helps you use the SoundBar to play audio from connected devices.

### Before you start

- Make the necessary connections described in the Quick Start Guide or download the User Manual from [www.philips.com/support](http://www.philips.com/support).
- Switch the SoundBar to the correct source for other devices.

---

## Adjust the volume

- 1 Press **+/- (Volume)** to increase or decrease a volume level.
  - To mute sound, press **MUTE**.
  - To restore the sound, press **MUTE** again or press **+/- (Volume)**.

### Volume indicator

- The higher volume level you change to, the more LED indicators light up. If you do not press the volume button for three seconds, the volume indicators light off.
- All the LED indicators blink three times when a volume level is set to the maximum or minimum.
- When sound is muted, the current source indicator blinks.

---

## Choose your sound

This section helps you choose the ideal sound for your video or music.

---

## Surround sound mode

Experience an immersive audio experience with surround sound modes.

- 1 Press **SURR** to turn surround mode on or off.
  - **On:** Create a surround listening experience.
  - **Off:** Two-channel stereo sound. Ideal for listening to music.

### Sound mode indicator

- If surround mode is turned on, all the LED indicators light up one by one, with all the LED indicators on for three seconds. Finally the current source indicator stays on.
- If surround mode is turned off, all the LED indicators light up, then light off one by one. Finally the current source indicator stays on.

---

## Equalizer

Change the high frequency (treble) and low frequency (bass) settings of the SoundBar.

- 1 Press **TREBLE +/-** or **BASS +/-** to change the treble or bass.

### Treble/bass indicator

- The more treble/bass you change to, the more LED indicators light up. If you do not press the treble/bass button for three seconds, the treble/bass indicators light off.
- All the LED indicators blink three times when treble or bass is set to the maximum or minimum value.

---

## Synchronize video and sound

If the audio and video are not synchronized, delay the audio to match the video.

- 1 Press **AUDIO SYNC +/-** to synchronize the audio with the video.
  - **AUDIO SYNC +** increases the sound delay, and **AUDIO SYNC -** decreases the sound delay.

## Sound delay indicator

- The more delay you change to, the more LED indicators light up. If you do not press the sound delay button for three seconds, the sound delay indicators light off.



### Note

- This feature is only applicable to **COAXIAL (COAX)** and **OPTICAL (OPT)** sources.

---

## Night mode

For quiet listening, night mode decreases the volume of loud sounds when audio is played. Night mode is only available for Dolby Digital soundtracks.

- 1 Press **NIGHT** to turn night mode on or off.

### Night mode indicator

- If night mode is turned on, all the LED indicators light up one by one, with all the LED indicators on for three seconds. Finally the current source indicator stays on.
- If night mode is turned off, all the LED indicators light up, then light off one by one. Finally the current source indicator stays on.

---

## MP3 player

Connect your MP3 player to play your audio files or music.

### What you need

- An MP3 player.
- A 3.5mm stereo audio cable.

- 1 Using the 3.5mm stereo audio cable, connect the MP3 player to the **AUDIO IN** connector on your SoundBar.
- 2 Press **AUDIO IN** on the remote control.
- 3 Press the buttons on the MP3 player to select and play audio files or music.

# USB storage devices

Enjoy audio on a USB storage device, such as an MP3 player and USB flash memory, etc.

## What you need

- A USB storage device that is formatted for FAT or NTFS file systems, and complies with the Mass Storage Class.
- An MP3 file on a USB storage device

- 1 Connect a USB storage device to the SoundBar.
- 2 Press **USB** on the remote control.
- 3 Use the remote control to control play.

Button	Action
▶	Start or pause or resume play.
◀/▶	Skip to the previous or next track.
REPEAT	During play, press to toggle: repeat all tracks and repeat off.

## Repeat play indicator

- If repeat mode is turned on, all the LED indicators blink for three times, then the current source indicator stays on.
- If repeat mode is turned off, all the LED indicators light up, then light off one by one. Finally the current source indicator stays on.

Note

- This product may not be compatible with certain types of USB storage device.
- If you use a USB extension cable, USB HUB, or USB multi-reader; the USB storage device may not be recognized.
- Digital camera PTP and MTP protocols are not supported.
- Do not remove the USB storage device while it is being read.
- DRM-protected music files (MP3) are not supported.
- Support a USB port: 5V ---, 1A.

# Auto standby

When playing media from a connected device, this product automatically switches to standby after 15 minutes of button inactivity and no audio play from a connected device.

# Apply factory settings

You can reset your SoundBar to the default setting mode.

- 1 In mute mode, quickly press **AUX** two times.  
↳ The factory settings is restored.

# Update software

To continually improve the product, software upgrade may be offered. Visit [www.philips.com/](http://www.philips.com/) support to check if the latest software version is available.

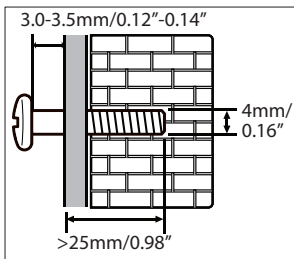
## 5 Wall mount

### Note

- Improper wall mounting may result in accident, injury or damage. If you have any query, contact Consumer Care in your country.
- Before wall mounting, make sure the wall can support the weight of your SoundBar.

### Screw length/diameter

Depending on the type of wall mounting your SoundBar, make sure that you use screws of a suitable length and diameter:



See the illustration in the quick start guide on how to wall mount the SoundBar.

- 1) Drill two holes on the wall.
- 2) Secure the dowels and screws in the holes.
- 3) Hang the SoundBar on the fastening screws.

## 6 Product specifications

### Note

- Specifications and design are subject to change without notice.

### Amplifier

- RMS total output power: 40W RMS (+/- 0.5 dB, 10% THD)
- Frequency response: 40 Hz-20 kHz /  $\pm 3$  dB
- Signal-to-noise ratio: > 65 dB (CCIR) / (A-weighted)
- Total Harmonic Distortion: <1%
- Input sensitivity:
  - AUX: 2Vrms +/-100mV
  - AUDIO IN: 1Vrms +/-100mV

### Audio

- S/PDIF Digital audio input:
  - Coaxial: IEC 60958-3
  - Optical: TOSLINK
- Sampling frequency:
  - MP3: 8 kHz, 11 kHz, 12 kHz, 16 kHz, 22 kHz, 24 kHz, 32 kHz, 44.1 kHz, 48 kHz
- Constant bit rate:
  - MP3: 8 kbps-320 kbps

### USB

- Compatibility: Hi-Speed USB (2.0)
- Class support: USB Mass Storage Class (MSC)
- File system: FAT16, FAT32, NTFS
- Supports MP3 file formats

---

## Main unit

- Power supply: 100-240 V~, 50/60 Hz
- Power consumption: 25 W
- Standby power consumption: ≤ 0.5 W
- Speaker impedance: 8 ohm (full range)
- Speaker drivers: 4 x 54.5 mm (2")
- Dimensions (W x H x D):  
865 x 67.8 x 85.5 mm (34.1" x 2.7" x 3.4")
- Weight: 1.8 kg / 3.96 lbs

---

## Remote control batteries

- 1 x AAA-R03-1.5 V

# 7 Troubleshooting



### Warning

- Risk of electric shock. Never remove the casing of the product.

To keep the warranty valid, never try to repair the product yourself.

If you have problems using this product, check the following points before you request service.

If you still have a problem, get support at [www.philips.com/support](http://www.philips.com/support).

---

## Main unit

**The buttons on the SoundBar do not work.**

- Disconnect the SoundBar from the power supply for a few minutes, then reconnect.

---

## Sound

**No sound from SoundBar speakers.**

- Connect the audio cable from your SoundBar to your TV or other devices.
- Reset your SoundBar to its factory settings.
- On the remote control, select the correct audio input.
- Make sure that the SoundBar is not muted.

**Distorted sound or echo.**

- If you play audio from the TV through the SoundBar, make sure that the TV is muted.



Manufactured under license from Dolby Laboratories. Dolby and the double-D symbol are trademarks of Dolby Laboratories.





Specifications are subject to change without notice

2015 © Gibson Innovations Limited. All rights reserved.

This product has been manufactured by, and is sold under the responsibility of Gibson Innovations Ltd., and Gibson Innovations Ltd. is the warrantor in relation to this product.

Philips and the Philips Shield Emblem are registered trademarks of Koninklijke Philips N.V. and are used under license from Koninklijke Philips N.V.

HTL1180B\_96\_UM\_V1.0

