

Register your product and get support at
www.philips.com/welcome

CSS5123



EN User manual

DA Brugervejledning

DE Benutzerhandbuch

EL Εγχειρίδιο χρήσης

ES Manual del usuario

FI Käyttöopas

FR Mode d'emploi

IT Manuale utente

NL Gebruiksaanwijzing

NO Brukerhåndbok

PT Manual do utilizador

SV Användarhandbok

TR Kullanım kılavuzu

PHILIPS

Contents

1 Help and support	4	7 Change settings	22
FAQs	4	Picture	22
Contact Philips	4	Sound	23
		Language	24
		Scan your USB storage device	24
		DLNA DMR control	24
		Energy saving	24
		Apply factory settings	25
2 Notice	4	8 Update software	25
Copyright	4	Check software version	25
Compliance	4	Update software through the Internet	25
Mains fuse (UK only)	5	Update software through USB	26
Open source software	5		
Trademarks	5	9 Product specifications	26
3 Important	6	10 Troubleshooting	29
Safety	6	11 Index	30
Care for your product	7		
Care of the environment	7		
4 Your SoundBar	7		
Main unit	7		
Remote control	8		
5 Connect your SoundBar	9		
Subwoofer	9		
Connectors	10		
Connect to TV	10		
Connect audio from TV and other devices	11		
Computers and the Internet	12		
Name your SoundBar	14		
6 Use your SoundBar	14		
Adjust the volume	14		
Choose your sound	14		
USB storage devices	15		
Audio, video, and picture options	16		
Use iPhone	17		
Share media through SimplyShare	19		
EasyLink	21		

1 Help and support

Download a software update and find answers to many frequently answered questions (FAQs) on your product at www.philips.com.

FAQs

If you have a problem, refer to the frequently asked questions (FAQs) for this SoundBar at www.philips.com/support.

If you still need help, contact Philips Consumer Care in your country.

Warning

- Do not attempt to repair your SoundBar yourself. This may cause severe injury, irreparable damage to your SoundBar, or void your warranty.

Contact Philips

If you contact Philips, you will be asked for the model and serial number of your product. The model number and serial number are on the back or bottom of your product. Note the numbers before you call Philips:

Model No. _____

Serial No. _____

2 Notice

This section contains the legal and trademark notices.

Copyright



Be responsible
Respect copyrights

This item incorporates copy protection technology that is protected by U.S. patents and other intellectual property rights of Rovi Corporation. Reverse engineering and disassembly are prohibited.

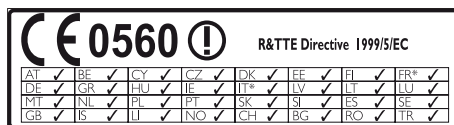
Copyright in the UK

Recording and playback of material may require consent. See Copyright Act 1956 and The Performers Protection Acts 1958 to 1972.

Compliance



This product is in compliance with the essential requirements and other relevant provisions of Directives 2006/95/EC (Low Voltage), 2004/108/EC (EMC).



* Wireless and Ethernet LAN functions are authorized for indoor use only.

Hereby, Philips Consumer Lifestyle, declares that this product is in compliance with the essential requirements and other relevant provisions of Directive 1999/5/EC.

A copy of the EC declaration of Conformity is available in the Portable Document Format (PDF) version of the user manual at www.philips.com/support.

Mains fuse (UK only)

This information applies only to products with a UK mains plug.

This product is fitted with an approved molded plug. If you replace the fuse, use one with:

- the ratings shown on the plug,
- a BS 1362 approval, and
- the ASTA approval mark.

Contact your dealer if you are not sure about what type of fuse to use.

Caution: To conform with the EMC directive (2004/108/EC), do not detach the plug from the power cord.

Open source software

Philips Electronics Singapore Pte Ltd hereby offers to deliver, upon request, a copy of the complete corresponding source code for the copyrighted open source software packages used in this product for which such offer is requested by the respective licenses. This offer is valid up to three years after product purchase to anyone in receipt of this information. To obtain source code, please contact open.source@philips.com. If you prefer not to use email or if you do not receive confirmation receipt within a week after mailing to this email address, please write to "Open Source Team, Philips Intellectual Property & Standards, P.O. Box 220, 5600 AE Eindhoven, The Netherlands". If you do not receive timely confirmation of your letter, please email to the email address above. The texts of the licenses and acknowledgements for open source software used in this product are included on a separate leaflet.

Trademarks



Manufactured under license under U.S. Patent Nos: 5,956,674; 5,974,380; 6,487,535 & other U.S. and worldwide patents issued & pending. DTS, the Symbol, & DTS and the Symbol together are registered trademarks & DTS 2.0+Digital Out is a trademark of DTS, Inc. Product includes software. © DTS, Inc. All Rights Reserved.



Manufactured under license from Dolby Laboratories. Dolby and the double-D symbol are trademarks of Dolby Laboratories.



DivX®, DivX Certified®, DivX Plus® HD and associated logos are trademarks of Rovi Corporation or its subsidiaries and are used under license.

ABOUT DIVX VIDEO: DivX® is a digital video format created by DivX, LLC, a subsidiary of Rovi Corporation. This is an official DivX Certified® device that plays DivX video. Visit divx.com for more information and software tools to convert your files into DivX videos.

ABOUT DIVX VIDEO-ON-DEMAND: This DivX Certified® device must be registered in order to play purchased DivX Video-on-Demand (VOD) movies. To obtain your registration code, locate the DivX VOD section in your device setup menu. Go to vod.divx.com for more information on how to complete your registration.



HDMI, the HDMI logo, and High-Definition Multimedia Interface are trademarks or registered trademarks of HDMI licensing LLC in the United States and other countries.



The Wi-Fi CERTIFIED Logo is a certification mark of the Wi-Fi Alliance.

Android is a trademark of Google Inc. Use of this trademark is subject to Google permissions.



DLNA®, the DLNA Logo and DLNA CERTIFIED® are trademarks, service marks, or certification marks of the Digital Living Network Alliance.

3 Important

Read and understand all instructions before you use your SoundBar. If damage is caused by failure to follow instructions, the warranty does not apply.

Safety

Risk of electric shock or fire!

- Never expose the product and accessories to rain or water. Never place liquid containers, such as vases, near the product. If liquids are spilt on or into the product, disconnect it from the power outlet immediately. Contact Philips Consumer Care to have the product checked before use.
- Never place the product and accessories near naked flames or other heat sources, including direct sunlight.
- Never insert objects into the ventilation slots or other openings on the product.
- Where the mains plug or an appliance coupler is used as the disconnect device, the disconnect device shall remain readily operable.
- Disconnect the product from the power outlet before lightning storms.
- When you disconnect the power cord, always pull the plug, never the cable.

Risk of short circuit or fire!

- Before you connect the product to the power outlet, ensure that the power voltage matches the value printed on the back or bottom of the product. Never connect the product to the power outlet if the voltage is different.

Risk of injury or damage to the SoundBar!

- For wall-mountable products, use only the supplied wall mount bracket. Secure the wall mount to a wall that can support the combined weight of the product and the wall mount. Koninklijke Philips Electronics N.V. bears no responsibility for improper wall mounting that results in accident, injury or damage.
- Never place the product or any objects on power cords or on other electrical equipment.

- If the product is transported in temperatures below 5°C, unpack the product and wait until its temperature matches room temperature before connecting it to the power outlet.
- Parts of this product can be made of glass. Handle with care to avoid injury and damage.

Risk of overheating!

- Never install this product in a confined space. Always leave a space of at least four inches around the product for ventilation. Ensure curtains or other objects never cover the ventilation slots on the product.

Risk of contamination!

- Do not mix batteries (old and new or carbon and alkaline, etc.).
- Remove batteries if they are exhausted or if the remote control is not to be used for a long time.
- Batteries contain chemical substances, they should be disposed of properly.

Risk of swallowing batteries!

- The product/remote control may contain a coin type battery, which can be swallowed. Keep the battery out of reach of children at all times!

Care for your product

Use only microfiber cloth to clean the product.

Care of the environment



Your product is designed and manufactured with high quality materials and components, which can be recycled and reused.



When this crossed-out wheeled bin symbol is attached to a product it means that the product is covered by the European Directive 2002/96/EC. Please inform yourself about the local separate collection system for electrical and electronic products.

Please act according to your local rules and do not dispose of your old products with your normal household waste.

Correct disposal of your old product helps to prevent potential negative consequences for the environment and human health.



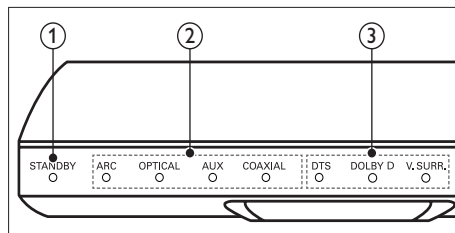
Your product contains batteries covered by the European Directive 2006/66/EC, which cannot be disposed with normal household waste.

Please inform yourself about the local rules on separate collection of batteries because correct disposal helps to prevent negative consequences for the environmental and human health.

4 Your SoundBar

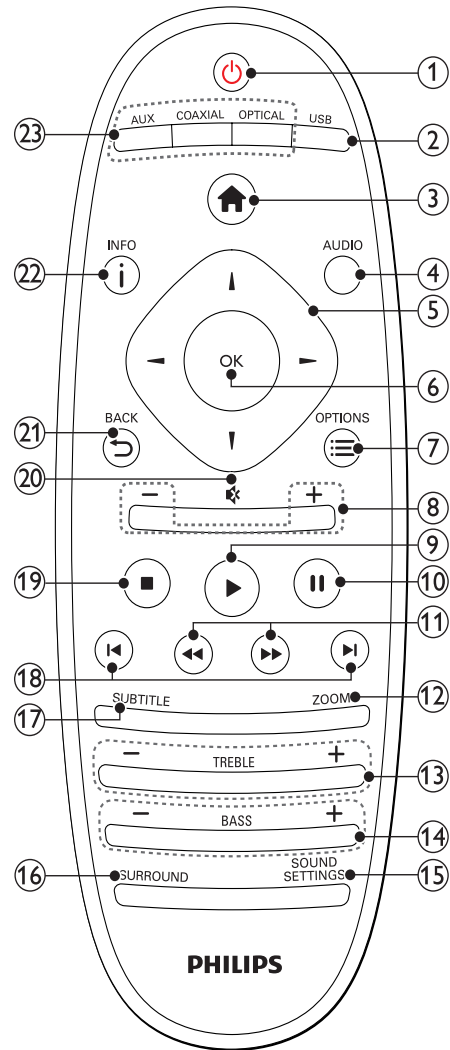
Congratulations on your purchase, and welcome to Philips! To fully benefit from the support that Philips offers, register your SoundBar at www.philips.com/welcome.

Main unit



- ① **Standby indicator**
When the SoundBar is in standby, the standby indicator turns red.
- ② **Source indicator/ Volume indicator**
Source indicator lights up when a source is selected.
When you change volume, volume indicators light up to indicate the volume level.
 - **ARC:** Lights up when you connect your SoundBar to a TV through an HDMI ARC connection.
 - **OPTICAL:** Lights up when you select Optical as the input source.
 - **AUX:** Lights up when you select AUX as the input source.
 - **COAXIAL:** Lights up when you select COAXIAL as the input source.
- ③ **Sound mode indicator/ Volume indicator**
Sound mode indicator lights up when you play an audio source with surround sound. When you change volume, volume indicators light up to indicate the volume level.
 - **DTS:** Lights up when you play DTS audio. Blinks when you press a remote control button.
 - **DOLBY D:** Lights up when you play Dolby audio.
 - **V.SURR:** Lights up when you select Virtual Surround sound.

Remote control



1 ⏻ (Standby-On)

- Switch the SoundBar on or to standby. When the SoundBar is in standby, the standby indicator turns red.
- When EasyLink is enabled, press and hold for at least three seconds to switch all connected HDMI CEC compliant devices to standby.

2 USB

Switch to USB storage device.

3 🏠 (Home)

Access the home menu.

4 AUDIO

Select an audio language when you play a video.

5 Navigation buttons (◀/▶/▲/▼)

Navigate menus.

6 OK

Confirm an entry or selection.

7 ≡ OPTIONS

Access more play options while playing a multimedia file from a USB storage device or PC (through DLNA).

8 +/- (Volume)

Increase or decrease volume.

9 ▶ (Play)

Start or resume play.

10 || (Pause)

Pause play.

11 ◀◀/▶▶ (Fast Backward/ Fast Forward)

Search backwards or forward.

12 ZOOM

Zoom into a video scene or picture.

13 TREBLE +/-

Increase or decrease treble.

14 BASS +/-

Increase or decrease bass.

15 SOUND SETTINGS

Toggle through sound modes.

16 SURROUND

Toggle between stereo and virtual surround sound.

17 SUBTITLE

Select subtitle language for video.

18 ◀▶ (Previous/Next)

Skip to the previous or next track, chapter or file.

19 ■ (Stop)

Stop play.

20 🔇 (Mute)

Mute or restore volume.

21 ↶ BACK

Return to a previous menu screen.

22 i INFO

Display information about the current picture, audio, or video.

23 AUDIO SOURCE

- **AUX:** Switch your audio source to the AUX connection.
- **COAXIAL:** Switch your audio source to the coaxial connection.
- **OPTICAL:** Switch your audio source to the optical connection.

EasyLink controls

With Easylink, you can control your SoundBar, TV and the connected devices with the standby button on your SoundBar remote control.

- **⏻ (Standby-On):** Press and hold to switch your SoundBar, TV, and the connected devices to standby.

5 Connect your SoundBar

This section helps you connect your SoundBar to a TV and other devices.

For information about the basic connections of your SoundBar and accessories, see the quick start guide. For a comprehensive interactive guide, see www.connectivityguide.philips.com.



Note

- For identification and supply ratings, refer to the type plate at the back or bottom of the product.
- Before you make or change any connections, make sure that all devices are disconnected from the power outlet.

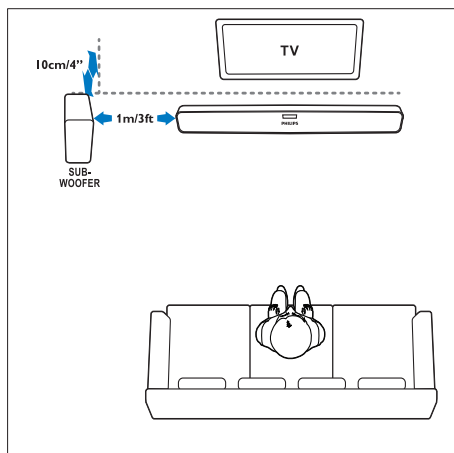
Subwoofer

Follow the steps below to position and connect your subwoofer:

Position

Place the subwoofer at least one meter (three feet) away from your SoundBar, and ten centimeters away from the wall.

For best results, place your subwoofer as shown below.



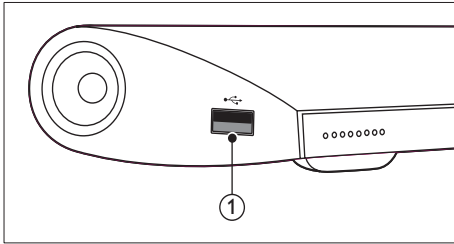
Note

- The SoundBar and the subwoofer automatically pair up when you switch on the SoundBar and the subwoofer.

Connectors

Connect other devices to your SoundBar.

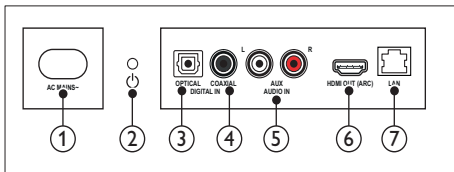
Side left



USB

Audio, video or picture input from a USB storage device.

Back connectors



- ① **AC MAINS~**
Connect to the power supply.
- ② **⏻ (Standby-On)**
 - Switch the SoundBar on or to standby.
 - When the SoundBar is in standby, the standby indicator turns red.
- ③ **DIGITAL IN - OPTICAL**
Connect to an optical audio output on the TV or a digital device.
- ④ **DIGITAL IN - COAXIAL**
Connect to a coaxial audio output on the TV or a digital device.
- ⑤ **AUDIO IN - AUX**
Connect to an analog audio output on the TV or an analog device.
- ⑥ **HDMI OUT (ARC)**
Connect to the HDMI input on the TV.
- ⑦ **LAN**
Connect to the LAN input on a broadband modem or router.

Connect to TV

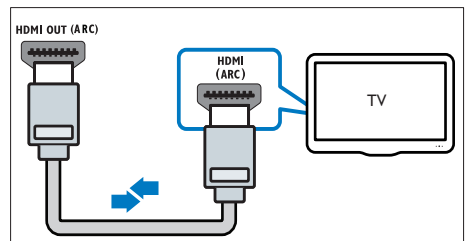
Connect your SoundBar to a TV to watch videos. You can listen to audio from TV programs through your SoundBar. Use the best quality connection available on your SoundBar and TV.

Option 1: Connect to TV through HDMI (ARC)

Your SoundBar supports HDMI version 1.4 - Audio Return Channel (ARC). If your TV is HDMI ARC compliant, connect your SoundBar to the TV through the HDMI ARC connection. With HDMI ARC, you do not need an additional audio cable to play audio from TV through your SoundBar.

(Cable not supplied)

- 1 Using a High Speed HDMI cable, connect the **HDMI OUT (ARC)** connector on your SoundBar to the **HDMI ARC** connector on the TV.
The **HDMI ARC** connector on the TV might be labeled **HDMI IN** or **HDMI**. For details on TV connectors, see the TV user manual.



- 2 On your TV, turn on HDMI-CEC. For details, see the TV user manual.
- 3 If audio from TV does not play automatically, set up the audio manually (see 'Set up audio for connected devices' on page 12).

Option 2: Connect to TV through HDMI

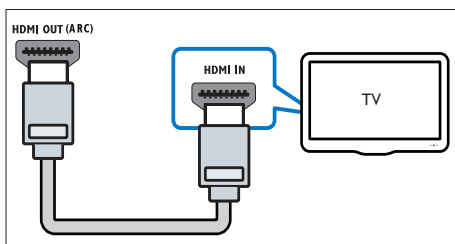
Best quality video

If your TV is not HDMI ARC compliant, connect your SoundBar to the TV through a standard HDMI connection.

With a standard HDMI connection, you need an additional audio cable to play the audio from the TV through your SoundBar (see 'Connect audio from TV and other devices' on page 11).

(Cable not supplied)

- 1 Using a High Speed HDMI cable, connect the **HDMI OUT (ARC)** connector on your SoundBar to the **HDMI IN** connector on the TV. The HDMI connector on the TV might be labeled **HDMI IN**.



- 2 On your TV, turn on HDMI-CEC. For details, see the TV user manual.
- 3 To play audio from TV programs through your SoundBar, connect an additional audio cable (see 'Connect audio from TV and other devices' on page 11).
- 4 If audio from the TV does not play automatically, set up the audio manually (see 'Set up audio for connected devices' on page 12).

Connect audio from TV and other devices

Play audio from TV or other devices through your SoundBar.

Use the best quality connection available on other devices.



Note

- The audio connections in this user manual are only recommendations. You can use other connections too.
- When your SoundBar and TV are connected through **HDMI ARC**, an audio connection is not required.

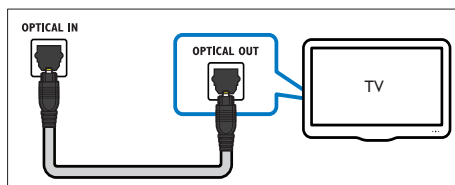
Option 1: Connect audio through a digital optical cable

Best quality audio

Using an optical cable, connect the **OPTICAL** connector on your SoundBar to the **OPTICAL OUT** connector on the device.

The digital optical connector might be labeled **SPDIF**, **SPDIF OUT**, or **OPTICAL**.

(Cable not supplied)



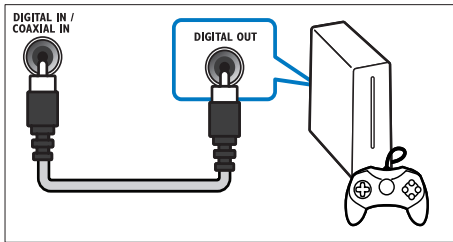
Option 2: Connect audio through a digital coaxial cable

Good quality audio

Using a coaxial cable, connect the **COAXIAL** connector on your SoundBar to the **COAXIAL/DIGITAL OUT** connector on the device.

The digital coaxial connector might be labeled **DIGITAL AUDIO OUT**.

(Cable not supplied)

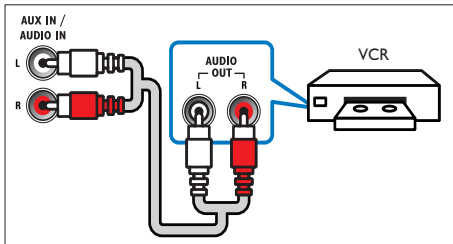


Option 3: Connect audio through analog audio cables

Basic quality audio

Using an analog cable, connect the **AUX** connectors on your SoundBar to the audio connectors on the device.

(Cable not supplied)



Set up audio for connected devices

When you connect a device to your SoundBar, check the audio settings.

- 1 On your TV and other devices, turn on HDMI-CEC. For details, see the user manual of the TV and the other device.
- 2 Select 'Amplifier' from the TV speakers menu to hear sound from the SoundBar. For details, see the TV user manual.
- 3 On your SoundBar, turn on System Audio Control.

If the connected device is not HDMI-CEC compliant, press the correct source button on the remote control to select the audio input.

Computers and the Internet

Connect your SoundBar to your computer network and the internet, and enjoy:

- **Multimedia content streamed from your computer:** Play music, photo, and video from a computer (see 'Browse PC from SoundBar' on page 19).
- **Multimedia content streamed from your mobile device or tablet:** Play music, photo, and video from a mobile device or other media server on your network (see 'Browse a media server from mobile device' on page 20).
- **Software update:** Update the SoundBar software through the network (see 'Update software through the Internet' on page 25).

! Caution

- Before you try to connect the SoundBar to a computer network, familiarize yourself with the network router, media server software and networking principles. If necessary, read documentation that accompanies the network components. Philips is not responsible for lost, damaged, or corrupt data.

Wired connection

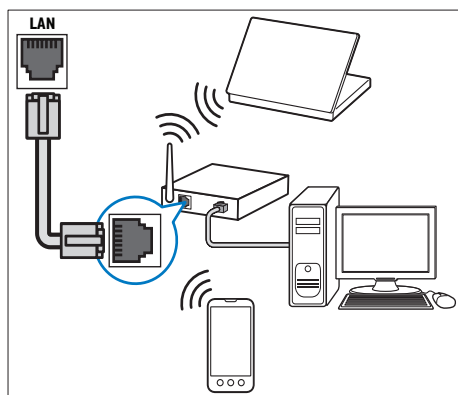
Connect your SoundBar to your router through a network cable.

What you need

- A network router (with DHCP enabled). For best performance, coverage, and compatibility, use 802.11n router.
- A network cable (RJ45 straight cable).
- Computer and mobile devices with media server software installed.
- For software update, make sure that the network router has access to the Internet, and is not restricted by firewalls or other security systems.

Set up the wired network

Connect your SoundBar to your router as shown below, and then switch on the devices.



- 1 Connect the SoundBar to a network router through a wired connection.
- 2 Turn on your TV, and switch to the correct source for the SoundBar.
- 3 Press **⬆** (Home).
- 4 Select **[Setup]**, and then press **OK**.
- 5 Select **[Network] > [Ethernet]**, and then press **OK**.
- 6 Follow the instructions on the TV to complete the setup.
➡ The SoundBar connects to the internet.
- 7 If connection fails, a failure message is displayed on your TV. Press **OK** to return to the previous menu, and then retry the procedure.

Wireless connection

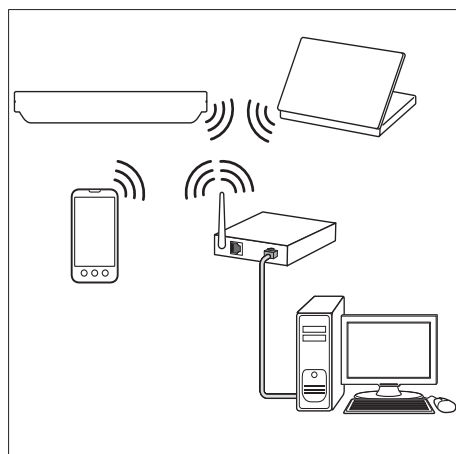
Connect your SoundBar to your router through a wireless connection.

What you need

- A network router (with DHCP enabled). For best wireless performance, coverage, and compatibility, use 802.11n router.
- Computer and mobile devices with media server software installed.
- For software update, make sure that the network router has access to the Internet and is not restricted by firewalls or other security systems.

Set up the wireless network

Your SoundBar has a built-in Wi-Fi for easy access to the wireless network. Connect your SoundBar to your router as shown below, and then switch on the devices.



- 1 Connect the SoundBar to a network router through a wireless connection.
- 2 Turn on your TV, and switch to the correct source for the SoundBar.
- 3 Press **⬆** (Home).
- 4 Select **[Setup]**, and then press **OK**.
- 5 Select **[Network] > [Wireless]**, and then press **OK**.
- 6 Follow the instructions on the TV to complete the setup.
➡ The SoundBar connects to the internet.
- 7 If connection fails, a failure message is displayed on your TV. Press **OK** to return to the previous menu, and then retry the procedure.

Check network settings

- 1 Press **⬆** (Home).
- 2 Select **[Setup]**, and then press **OK**.
- 3 Select **[Network] > [Network Info]**, and then press **OK**.
 - ↳ The current network settings are displayed.

Name your SoundBar

To easily identify your SoundBar on a network, name your SoundBar.

- 1 Turn on your TV, and switch to the correct source for the SoundBar.
- 2 Press **⬆** (Home).
- 3 Select **[Setup]**, and then press **OK**.
- 4 Select **[System] > [Device Name]**, and then press **OK**.
 - ↳ A virtual keyboard is displayed on your TV.
- 5 Press **Navigation buttons** and **OK** to enter the name.
- 6 Select **[OK]** on the virtual keyboard to exit.

6 Use your SoundBar

This section helps you use the SoundBar to play media from a wide range of sources.

Before you start

- Make the necessary connections described in the quick start guide
- Complete the first-time setup. First-time setup appears when you turn on the SoundBar for the first time. If you do not complete the setup, you are prompted to complete it each time you turn on the SoundBar.
- Switch the TV to the correct source for the SoundBar.

Adjust the volume

Your SoundBar has incremental volume control. When you change volume or mute your SoundBar, one or multiple **Volume indicator** light up to indicate the volume level.

- To increase or decrease volume, press **+/- (Volume)**.
- To mute sound, press **MUTE**.
- To restore the sound, press **MUTE** again or press **+/- (Volume)**.

Choose your sound

This section helps you choose the ideal sound for your video or music.

Sound mode

Select predefined sound modes to suit your video or music.

- 1 Press **SOUND SETTINGS** repeatedly to select a sound setting:
 - **[Auto]**: Automatically select **[Movie]** or **[Music]** based on the sound stream.
 - **[Movie]**: Enjoy a cinematic audio experience, specially enhanced for movies.
 - **[Music]**: Recreate the original recording environment of your music, in the studio or at a concert.
 - **[Original]**: Experience the original sound of your movies and music, without added sound effects.

- **[News]:** Hear every word with optimized speech and clear vocals.
- **[Gaming]:** Enjoy thrilling arcade sounds, ideal for action-packed video games or loud parties.

2 Press **OK** to confirm.

Auto volume

Turn the auto volume on to keep the volume constant when you switch to a different source.

- 1 Press **⬆️ (Home)**.
- 2 Select **[Setup]**, and then press **OK**.
- 3 Press the **Navigation buttons** (up/down) to select **[Audio] > [Auto Volume] > [On]**.
- 4 Press **OK** to confirm.

Surround sound mode

Experience an immersive audio experience with surround sound modes.

- 1 Press **SURROUND** repeatedly to select a surround mode.
 - **[Virtual Surround]:** Creates a highly compelling 5.1 channel listening experience. The sound mode indicator on the main unit lights up.
 - **[Stereo]:** Two-channel stereo sound. Ideal for listening to music.

Equalizer

Change the high frequency (treble) and low frequency (bass) settings of the SoundBar. Press **TREBLE +/-** or **BASS +/-** to change the frequency.

The **DTS** indicator lights up for one second when treble or bass is set to the maximum or minimum value.

Synchronize picture and sound

If the audio and video are not synchronized, delay the audio to match the video.

- 1 Press **⬆️ (Home)**.
- 2 Select **[Setup]**, and then press **OK**.
- 3 Press the **Navigation buttons** (up/down) to select **[Audio] > [Lip Sync]**, and then press **OK**.
- 4 Select one of the following options, and then press **OK**:
 - **[Auto]:** For an HDMI connection, automatically adjust the audio delay.
 - **[Manual]:** Press the **Navigation buttons** (up/down) to manually adjust the audio delay.
 - **[Off]:** Disable automatic adjustment of audio.
- 5 Press **OK** to confirm.

USB storage devices

Enjoy pictures, audio and video on a USB storage device.

What you need

- A USB storage device that is formatted for FAT or NTFS file systems, and complies with the Mass Storage Class.
- A USB extension cable, if the USB storage device does not fit into the connector.



Note

- You can use digital cameras connected by USB if they can play the files without using a special computer program.
- To play DivX DRM - protected files from a USB storage device, connect your SoundBar to a TV through an HDMI cable.

- Play files

1

Connect the USB storage device to the SoundBar.

2

Press **USB**.
↳ The content browser is displayed.

3

Select a file, and then press **OK**.

4

Press the playback buttons to control play (see 'Play buttons' on page 16).

Play buttons

Button	Action
Navigation buttons	Navigate menus.
OK	Confirm an entry or selection.
▶ (Play)	Start or resume play.
⏏	Pause play.
■	Stop play.
⏮ / ⏭	Skip to the previous or next track, chapter or file.
⏪ / ⏩	Search backwards or forward.
Navigation buttons (up/down)	Rotate the picture counter-clockwise or clockwise.
SUBTITLE	Select subtitle language for video.
≡ OPTIONS	Access more play options while playing a multimedia file.

- For video formats such as DivX and WMV:
- To stop play, press ■.

• To resume the video from where you stopped, press ▶ (Play).

• To play the video from the start, press OK.

DivX

To play DivX videos from a USB storage device.

Note

• To play DivX DRM protected files from a USB storage device, connect your SoundBar to a TV through an HDMI cable.

- VOD code for DivX
- Before you purchase DivX videos and play them, register the SoundBar on www.divx.com using the DivX VOD code.
- 1

Press **⬆ (Home)**.

2

Select **[Setup]**, and then press **OK**.

3

Select **[MISC] > [DivX(R) VOD Code]**, and then press **OK**.
↳ The DivX VOD registration code for your SoundBar is displayed.

Subtitles

If your video has subtitles in multiple languages, select a subtitle language.

1

While playing video, press **SUBTITLE** to select a language.

Note

• Make sure that the subtitle file has the same name as the video file. For example, if the video file is named 'movie.avi', save the subtitle file as 'movie.srt' or 'movie.sub'.

• You can play subtitle files in the following formats: .srt, .sub, .txt, .ssa, .ass, smi, and .sami. These files do not appear in the file navigation menu.

- Audio, video, and picture options
- Use advanced features when you play audio, video, or media files from a USB storage device or network media server (through SimplyShare).
- Audio options

While playing audio, repeat an audio track or a folder.

1

Press **≡ OPTIONS** repeatedly to cycle through the following functions:

• **[Repeat One]**: Repeat the current track or file.

• **[Repeat All]**: Repeat a selected folder.

• **[Shuffle Loop]**: Play audio tracks in random order.

• **[Repeat Off]**: Turn off the repeat mode.

Video options

While watching video, select options such as subtitles, audio language, and video settings. Depending on the video source, some options are not available.

- 1 Press **≡** **OPTIONS**.
↳ The video options menu is displayed.
- 2 Press the **Navigation buttons** and **OK** to select and change:
 - **[Audio]**: Select audio language for video.
 - **[Subtitle]**: Select subtitle language for video.
 - **[GoTo]**: Skip to a specific part of the video by entering the time of the scene.
 - **[Repeat Title]**: Repeat a title.
 - **[Repeat All]**: Repeat all the tracks.
 - **[Repeat Off]**: Turn off the repeat mode.
 - **[Video Setting]**: Adjust the video output.

Picture options

While viewing a picture, add animation to a slideshow or change the picture settings.

- 1 Press **≡** **OPTIONS**.
↳ The picture options menu appears.
- 2 Press the **Navigation buttons** and **OK** to select and change the following settings:
 - **[Video Setting]**: Adjust the video output.
 - **[Background Music]**: Select the music track.
 - **[Slide Timing]**: Select the display speed for each picture in a slide show.
 - **[Slide Transition]**: Select the transition type for slideshow.
 - **[Shuffle Loop]**: Play pictures in random order.
 - **[Repeat All]**: Repeat a selected folder.
 - **[Repeat Off]**: Turn off the repeat mode.

Slideshows

While playing audio, access fun features such as picture and musical slideshows.

Picture slideshows

View a slideshow of your pictures stored in your USB storage device or network media server.

- 1 Select a picture from the USB storage device or network media server, and then press **▶** **(Play)**.
- 2 Press **≡** **OPTIONS**.
- 3 Press **Navigation buttons** and **OK** to select the following settings:
 - **[Slide Transition]**: Select the transition type for slideshow.
 - **[Slide Timing]**: Select the display speed for each picture in a slide show.
- 4 Press **■** to stop the slideshow.

Musical slideshows

Create a musical slideshow to play music and pictures at the same time.

- 1 Select a music track, and then press **OK**.
- 2 Press **↶** **BACK**, and go to the picture folder.
- 3 Select a picture, and then press **▶** **(Play)** to start the slideshow.
- 4 Press **■** to stop slideshow and music.

Use iPhone

Turn your iPhone into a virtual remote control, or use it to browse the contents of a USB storage device on your SoundBar.

What you need

- An iPhone (iOS 3.1.3 and above).
- A wired or wireless home network.

Before you start

- Connect your SoundBar to your home network (see 'Computers and the Internet' on page 12).
- Name your SoundBar (see 'Name your SoundBar' on page 14).
- Connect your iPhone to the same home network. For details, see your iPhone user manual.

Download MyRemote application

Download the Philips application, **MyRemote** (MyRemote) to your iPhone. This application is free.

Note

- Philips **MyRemote** is only available for iPhones and Android smartphones.

- 1 Tap the **App Store** (App Store) icon on the iPhone.
- 2 Search for 'Philips **MyRemote**' application.
- 3 Follow the instructions on your iPhone to download the application.
 - ↳ The **MyRemote** (MyRemote) icon is added to the home screen of your iPhone.

Access MyRemote application

Access the **MyRemote** application from your iPhone, and then identify your SoundBar on the home network.

- 1 Tap **MyRemote** (MyRemote) on your iPhone.
 - ↳ Your SoundBar and the other devices on the network are displayed on your iPhone. A browsing bar with **Devices**, **Remote**, and **Source** tabs is also displayed.
- 2 If your SoundBar is not found, check the network connection. Then, tap the **Devices** (Devices) tab on your iPhone to search again.
- 3 Tap the SoundBar icon on the iPhone.
 - ↳ The virtual remote control is displayed on the iPhone.
- 4 To exit the application, press the home button on your iPhone.

Use your iPhone as a remote control

The virtual remote control is displayed in multiple screens on the iPhone. To access the buttons, swipe the iPhone screen to the left or right.

Only the control buttons that are relevant to the play mode are enabled on your iPhone. For example, if you play pictures, only the remote control buttons that are used to control the pictures are enabled. However, if you play a video, additional buttons, such as **SUBTITLE** are enabled on your iPhone.

- 1 Launch the application on your iPhone.
 - ↳ Depending on the play mode, the relevant remote control buttons are enabled.
- 2 If the remote control buttons do not appear, tap the **Remote** (Remote) tab on your iPhone.
- 3 Swipe to the left or right screen to access more buttons.

Note

- Some control functions are not available on iPhones.

Browse a USB storage device

Browse a USB storage device from your iPhone, and play an audio, video, or multimedia file.

- 1 Launch the remote control application on your iPhone.
- 2 Connect a USB storage device to your SoundBar.
- 3 On your iPhone, tap the **Source** (Source) tab, and then select **USB** (USB).
 - ↳ The folders in your USB storage device are displayed.
- 4 Select a folder to browse, and then select a file to play.
 - ↳ The relevant remote control buttons are enabled on your iPhone.
- 5 To access the remote control while you browse the contents, tap the **Remote** (Remote) tab on your iPhone.

Share media through SimplyShare

When you connect your SoundBar to your home network, you can enjoy music, photo, and video stored on a computer or other media server on the network through SimplyShare.

With SimplyShare, you can:

- select and play media stored on a computer through your SoundBar;
- select media stored on a mobile device and play it on your SoundBar; and
- use your mobile device as a controller to select content from a media server, and play it on your SoundBar.

The media server can be set up on any DLNA-compatible device such as a computer, smartphone, or tablet.

Note

- You cannot share copyright protected content through SimplyShare.

What you need

- A wired or wireless home network, connected to a Universal Plug and Play (uPnP) router. For best wireless performance, coverage, and compatibility, use 802.11n router.
- A LAN cable to connect your SoundBar to your home network.
- A media server software such as:
 - PC running Windows Media Player 11 or higher; or
 - Mac running Twonky Media Server; or
 - Mobile devices with media sharing applications.

Note

- There are numerous media servers in the market for computers and mobile devices. These media servers support variety of devices, media types, and operating systems. Select a media server based on the device, operating system, and your needs.

Before you start

- Connect your SoundBar to your home network. For best performance, connect the SoundBar through a wired network (see 'Computers and the Internet' on page 12).

- Connect your computer and other DLNA-compatible mobile devices to the same home network. For details, see the user manual of the device.
- Make sure that the PC firewall allows you to run the media server software.
- Make sure that the devices supports DLNA or media sharing (iOS) features.
- Switch on the devices and the router.

Browse PC from SoundBar

From the SoundBar home menu, access the media files on your computer and share them through SimplyShare.

To enable media sharing, set up the media server software on your computer.

Set up media server software

Some examples of media servers are as follows. To use other media servers, see the web site of the media server.

Microsoft Windows Media Player 11

- 1 Start Windows Media Player on your PC.
- 2 Click the **Library** tab, and then select **Media Sharing**.
- 3 The first time you select **Media Sharing** on your PC, a pop-up screen appears. Check the **Share my media box** and click **OK**.
 - ↳ The **Media Sharing** screen is displayed.
- 4 In the **Media Sharing** screen, make sure that you see a device marked as **Unknown Device**.
 - ↳ If you don't see an unknown device after a minute or so, check that your PC firewall is not blocking the connection.
- 5 Select the unknown device and click **Allow**.
 - ↳ A green tick appears next to the device.
- 6 By default, Windows Media Player shares from these folders: **My Music**, **My Pictures**, and **My Videos**. If your files are in other folders, select **Library > Add to Library**.
 - ↳ The **Add to Library** screen is displayed.
 - ↳ If necessary, select **Advanced options** to display a list of monitored folders.
- 7 Select **My folders and those of others I can access**, and then click **Add**.
- 8 Follow the onscreen instructions to add the other folders that contain your media files.

Microsoft Windows Media Player 12

- 1 Start Windows Media Player on your PC.
- 2 In Windows Media Player, click the **Stream** tab, and then select **Turn on media streaming**.
 - ↳ The **Media streaming options** screen is displayed.
- 3 Click **Turn on media streaming**.
 - ↳ You return to Windows Media Player screen.
- 4 Click the **Stream** tab and select **More streaming options**.
 - ↳ The **Media streaming options** screen is displayed.
- 5 Make sure that you see a media program in the **Local network** screen.
 - ↳ If you don't see a media program, check that your PC firewall is not blocking the connection.
- 6 Select the media program and click **Allowed**.
 - ↳ A green arrow appears next to the media program.
- 7 By default, Windows Media Player shares from these folders: **My Music**, **My Pictures**, and **My Videos**. If your files are in other folders, click the **Organize** tab and select **Manage libraries > Music**.
 - ↳ The **Music Library Locations** screen is displayed.
- 8 Follow the onscreen instructions to add the other folders that contain your media files.

Macintosh OS X Twonky Media (v4.4.2)

- 1 Visit www.twonkymedia.com to purchase the software, or download a free 30-day trial to your Macintosh.
- 2 Start Twonky Media on the Macintosh.
- 3 In the Twonky Media Server screen, select **Basic Setup** and **First Steps**.
 - ↳ The First steps screen is displayed.
- 4 Type a name for your media server; and then click **Save changes**.
- 5 Back in the Twonky Media screen, select **Basic Setup** and **Sharing**.
 - ↳ The **Sharing** screen is displayed.
- 6 Browse and select folders to share, and then select **Save Changes**.
 - ↳ Your Macintosh rescans the folders automatically so that they are ready to share.

Play files from your PC



Note

- Before you play multimedia content from the computer, make sure that the SoundBar is connected to the home network, and the media server software is properly set up.

- 1 Switch your TV to the correct HDMI source for your SoundBar.
- 2 Press **▲ (Home)**.
 - ↳ The home menu is displayed.
- 3 Select **[Network]**, and then press **OK**.
 - ↳ A content browser is displayed.
- 4 Select a file, and then press **OK**.
- 5 Press the playback buttons to control play (see 'Play buttons' on page 16).

Browse a media server from mobile device

From your mobile device such as a smartphone or tablet, access media files on any media server on the network and share them through SimplyShare.



Note

- Not all devices are capable of sharing media through SimplyShare. For information about your mobile device, see the user manual of your mobile device.

Download a media sharing application on your mobile device.

- For Android based smartphones and tablets, search for DLNA media server app in Android Market (Android).
- For iPhones, iPods and iPads, search for media server app in App Store (Apple).

Follow the onscreen instructions to set up the media server software on your mobile device. Make sure that you select the correct settings to use the mobile device as a media server and controller. For details, check the user manual of the mobile application.

Control and play files stored on any device

Note

- The exact steps differ from one device to another. For information about your mobile device, contact the support center of your device.

- 1 Make sure that the media server application is set up on your mobile device.
- 2 Launch the media sharing application on the mobile device.
 - ↳ Your SoundBar, mobile device, and other devices on the home network are automatically detected and displayed on the screen.
- 3 Select the device that stores your media files. For example, if you want to play a file from your mobile device, select the mobile device. If you want to play a file from your computer, select your computer.
 - ↳ The folders in the selected device are displayed. Depending on the media server, the folder names may vary.
 - ↳ If you cannot see the folders, make sure that you enable media sharing on the selected device so that the content is available for sharing.
- 4 Select a media file to play.
- 5 From the menu of your mobile device, select SoundBar to stream the media to your SoundBar.
- 6 Tap the play buttons on your mobile device to control the play.
 - ↳ The media file is shared on the home network.
 - ↳ Some media files may not display or play due to compatibility issues.

EasyLink

The SoundBar supports Philips EasyLink, which uses the HDMI-CEC (Consumer Electronics Control) protocol. EasyLink-compliant devices that are connected through HDMI can be controlled by a single remote control.

Philips does not guarantee 100% interoperability with all HDMI-CEC devices.

What you need

- HDMI-CEC compliant devices.
- An HDMI connection between the connected devices.

Switch on

- 1 On the TV and other connected devices, turn on the HDMI-CEC operations. For details, see the manual of the TV or other devices.
- 2 Press **⬆** (Home).
- 3 Select **[Setup]**, and then press **OK**.
- 4 Select **[EasyLink] > [EasyLink]**, and then press **OK**.
- 5 Select **[On]**, and then press **OK**.

Control devices

Control the SoundBar and the other connected HDMI-CEC compliant devices with a single remote control.

One-touch play

If you enable One-touch play, the TV automatically switches to the correct channel when you play a video in your SoundBar.

One-touch standby

When you press and hold **⏻** (Standby) on the remote control, the SoundBar and all the connected HDMI-CEC devices (that support one-touch standby) switch to the standby mode. If one-touch standby is enabled on your SoundBar, you can switch to standby with the remote control of the TV or other HDMI-CEC devices.

Auto Power On From TV

If auto power from TV is enabled on your SoundBar, you can turn on your SoundBar when you press and hold the **⏻** (Standby) on the TV remote control.

System Audio Control

When you play a device that has its audio output routed to the SoundBar, turn on System Audio control and select audio source through your connected device.

To use one-touch audio, turn on System Audio Control and select audio source through your connected device.

HDMI ARC

When you switch source to HDMI ARC, turn on HDMI ARC.

Play audio from SoundBar

Play the audio from a connected device through your SoundBar.

- 1 Press **▲** (Home).
- 2 Select **[Setup]**, and then press **OK**.
- 3 Select **[EasyLink]** > **[System Audio Control]** > **[On]**, and then press **OK**.
- 4 Press **AUDIO SOURCE** button on your remote control to select the audio output for the connected device.
 - **AUX**: Switch your audio source to the AUX connection.
 - **COAXIAL**: Switch your audio source to the coaxial connection.
 - **OPTICAL**: Switch your audio source to the optical connection.
- 5 Press **OK** to confirm.

Note

- To play TV audio from your SoundBar through HDMI ARC connection, select the correct video input on the TV and turn off the TV speakers (see 'Connect to TV' on page 10).
- For details, see the TV user manual.

7 Change settings

This section helps you to change the settings of your SoundBar.

Caution

- Most of the settings are already configured with the best value for your SoundBar. Unless you have a reason to change a setting, it is best to leave it at the default value.

Picture

Change the picture settings to suit your preferences.

Note

- The best setting is automatically selected for the TV. If you change the setting, make sure that the TV supports the new settings.

Picture settings and format

- 1 Press **▲** (Home).
- 2 Select **[Setup]**, and then press **OK**.
- 3 Select **[Video]** > **[Aspect Ratio]**, and then press **OK**.
- 4 Select one of the following settings, and then press **OK**:
 - **[16:9]**: Display picture in 16:9 aspect ratio if the source is 16:9.
 - **[Pan Scan 4:3]**: Adjust the 16:9 source to display picture in 4:3 aspect ratio.
 - **[Letter Box 4:3]**: Adjust the 16:9 source to display picture in 4:3 aspect ratio with black borders on top and bottom.
 - **[16:10]**: Display picture in 16:10 aspect ratio if the source is 16:10.

Picture color

Deep Color recreates the natural world on your TV screen and displays vivid images in over a billion of colors.

If your TV supports Deep Color and is connected to your SoundBar through an HDMI cable, you can change the Deep Color.

- 1 Press **▲** (Home).
- 2 Select **[Setup]**, and then press **OK**.
- 3 Select **[Video]** > **[Deep Color]**, and then press **OK**.
- 4 Select one of the following options, and then press **OK**:
 - **[Auto]**: Automatically select HDMI Deep Color.
 - **[10 bit]**: Display 10-bit color.
 - **[12 bit]**: Display 12 bit color.
 - **[Off]**: Display standard 24-bit color.

Picture resolution

Set the picture resolution for your video.

- 1 Press **▲** (Home).
- 2 Select **[Setup]**, and then press **OK**.
- 3 Select **[Video]** > **[TV System]**, and then press **OK**.
- 4 Select a picture resolution, and then press **OK**.

Video zoom

Zoom into a picture or video.

- 1 Press **▲** (Home).
- 2 Select **[Setup]**, and then press **OK**.
- 3 Select **[Video]** > **[Video Zoom]** > **[On]**, and then press **OK**.

1080P 24 Hz output

Enable 1080p 24 Hz HDMI output on your TV.

- 1 Press **▲** (Home).
- 2 Select **[Setup]**, and then press **OK**.
- 3 Select **[Video]** > **[1080P 24Hz]** > **[On]**, and then press **OK**.

Video setting

Adjust the video output.

- 1 Press **▲** (Home).
- 2 Select **[Setup]**, and then press **OK**.
- 3 Select **[Video]** > **[Video Setting]**, and then press **OK**.
- 4 Adjust the settings.
- 5 Press **OK** to confirm.

Sound

Change the sound settings to suit your preference.

HDMI audio

To hear an HDMI audio output from your TV, connect your SoundBar to the TV through an HDMI cable.

- 1 Press **▲** (Home).
- 2 Select **[Setup]**, and then press **OK**.
- 3 Select **[Audio]** > **[HDMI Output]**, and then press **OK**.
- 4 Select the following options, and then press **OK**:
 - **[PCM]**: Switch audio output to stereo.
 - **[RAW]**: Output original DTS or Dolby audio.

Night mode

For quiet listening, decrease the volume of loud sounds when you play audio. Night mode is only available for Dolby-encoded audio.

- 1 Press **▲** (Home).
- 2 Select **[Setup]**, and then press **OK**.
- 3 Select **[Audio]** > **[Night mode]** > **[On]**, and then press **OK**.

Language

Select a language for the home menu and subtitles.

Home menu

- 1 Press **⬆** (Home).
- 2 Select **[Setup]**, and then press **OK**.
- 3 Select **[System]** > **[Menu Language]**, and then press **OK**.
- 4 Select a menu language, and then press **OK**.

Video subtitle

- 1 Press **⬆** (Home).
- 2 Select **[Setup]**, and then press **OK**.
- 3 Select **[System]** > **[Subtitle]**, and then press **OK**.
- 4 Select a subtitle language for your video, and then press **OK**.

Scan your USB storage device

Scan the USB storage device connected to your SoundBar to browse the media files.

Automatic scan

Automatically scan the USB storage device connected to your SoundBar.

- 1 Press **⬆** (Home).
- 2 Select **[Setup]**, and then press **OK**.
- 3 Select **[System]** > **[Auto Scan]** > **[Auto scan on]**, and then press **OK**.

Rescan

Rescan the USB storage device connected to your SoundBar or stop scanning.

- 1 Press **⬆** (Home).
- 2 Select **[Setup]**, and then press **OK**.
- 3 Select **[System]** > **[Scan Storage]** > **[Rescan Storage]/ [Stop Scanning Storage]**, and then press **OK**.

DLNA DMR control

Restrict access to DLNA DMR content.

- 1 Press **⬆** (Home).
- 2 Select **[Setup]**, and then press **OK**.
- 3 Select **[System]** > **[DLNA DMR]** > **[On]**, and then press **OK**.

Energy saving

Save energy by changing the following settings.

Auto standby

When playing a file from a USB storage device or network media server, automatically switch your Soundbar to standby if:

- it is in pause or stop mode, and
- no button is pressed for 15 minutes.

- 1 Press **⬆** (Home).
- 2 Select **[Setup]**, and then press **OK**.
- 3 Select **[System]** > **[Auto Standby]** > **[On]**, and then press **OK**.

Sleep timer

Set timers to switch the SoundBar to standby after a specified time.

- 1 Press **⬆** (Home).
- 2 Select **[Setup]**, and then press **OK**.
- 3 Select **[System]** > **[Sleep Timer]**, and then press **OK**.
- 4 Select the duration of the sleep timer:
 - ↳ The sleep timer can be set up to 60 minutes. If the sleep timer is set to **[Off]**, it switches off.
- 5 Press **OK** to activate.
 - ↳ The SoundBar switches to standby after the specified time.

Screen saver

Automatically switch your SoundBar to screen saver mode if:

- it is in pause or stop mode, and
 - no button is pressed for the specified time.
- 1 Press **⬆** (Home).
 - 2 Select **[Setup]**, and then press **OK**.
 - 3 Select **[System]** > **[Screen Saver]**, and then press **OK**.
 - 4 Specify the time period by selecting one of the following options, and then press **OK**.
 - **[Off]**: Disable the screen saver.
 - **[2 Minutes]**: Switch to screen saver mode after two minutes.
 - **[5 Minutes]**: Switch to screen saver mode after five minutes.
 - **[10 Minutes]**: Switch to screen saver mode after ten minutes.

Resume play

Resume play from where you stopped.

- 1 Press **⬆** (Home).
- 2 Select **[Setup]**, and then press **OK**.
- 3 Select **[System]** > **[Resume Play]** > **[On]**, and then press **OK**.

Apply factory settings

Reset your SoundBar to the default settings.

- 1 Press **⬆** (Home).
- 2 Select **[Setup]**, and then press **OK**.
- 3 Select **[System]** > **[Factory Default]**, and then press **OK**.
- 4 Select **[Yes]**, and then press **OK**.

8 Update software

To continue to get the best features and support for your SoundBar, update the software regularly. Compare the version of your current software with the latest version on www.philips.com/support.

Check software version

- 1 Press **⬆** (Home).
- 2 Select **[Setup]**, and then press **OK**.
- 3 Select **[MISC]** > **[Version Info]**, and then press **OK**.
 - ↳ The software version is displayed.

Update software through the Internet

- 1 Connect your SoundBar to the network. Use a
 - wired network connection (see 'Wired connection' on page 13), or
 - a wireless network connection (see 'Wireless connection' on page 13).
- 2 Press **⬆** (Home).
- 3 Select **[Setup]**, and then press **OK**.
- 4 Select **[MISC]** > **[Online Upgrade]**.
 - ↳ If an upgrade media is detected, you are prompted to start or cancel the update.
- 5 Follow the instruction on the TV to confirm the update.
 - ↳ When the software update is complete, the SoundBar automatically switches off and restarts. If it does not, disconnect the power cord for a few seconds and then reconnect it.



Note

- If the SoundBar cannot connect to the Philips server, press **⬆** (Home), and then select **[Setup]** > **[Network]** > **[Ethernet]**/**[Wireless]** to set up the network.

Update software through USB

What you need

- A USB flash drive, with at least 75MB of memory. The USB flash drive must be FAT or NTFS formatted. Do not use a USB hard drive.
- A computer with Internet access.
- An archive utility that supports the ZIP file format (for example, WinZip® for Microsoft® Windows® or StuffIt® for Macintosh®).

Step 1: Download the latest software

- 1 Connect a USB flash drive to your computer.
- 2 In your web browser, go to www.philips.com/support.
- 3 At the Philips Support website, find your product and locate the **Software and drivers**.
↳ The software update is available as a zip file.
- 4 Save the zip file in the root directory of your USB flash drive.
- 5 Use the archive utility to extract the software update file in the root directory of the USB flash drive.
↳ The files are extracted under the root directory of your USB flash drive.
- 6 Disconnect the USB flash drive from your computer.

Step 2: Update the software

- 1 Connect the USB flash drive to your SoundBar.
- 2 Switch your TV to the correct source for your SoundBar.
- 3 Press **⬆ (Home)**, and then select **[Setup]**.
- 4 Select **[MISC] > [USB Upgrade]**.
- 5 Follow the instructions on the TV to confirm the update.
↳ When the software update is complete, the SoundBar automatically switches off and restarts. If it does not, disconnect the power cord for a few seconds, and then reconnect it.

Note

- When the software update is in progress, do not turn off the power or remove the USB flash drive.

9 Product specifications

Note

- Specifications and design are subject to change without notice.

Media formats

- Picture files, MP3 media, WMA media, DivX Plus HD media, USB storage device

File formats

- Audio: .aac, .mka, .mp3, .wma, .wav, .mp4, .m4a
- Video:
 - .avi, .divx, .mp4, .mkv, .asf, .wmv, .mpg, .mpeg, .mov, .m4v
 - .rmvb, .rm (Available only in Asia Pacific and China)
- Picture: .bmp, .jpg, .jpeg, .gif, .png

Audio formats

Your SoundBar supports the following audio files.

Extension	Container	Audio codec	Bit rate
.mp3	MP3	MP3	32 kbps ~ 320 kbps
.wma	ASF	WMA	64 kbps ~ 160 kbps
.aac	AAC	AAC, HE-AAC	192 kbps
.wav	WAV	PCM	1.4 Mbps
.m4a	MKV	AAC	192 kbps
.mka	MKA	PCM	27.648 Mbps
.mka	MKA	Dolby Digital	640 kbps
.mka	MKA	DTS core	1.54 Mbps
.mka	MKA	MPEG	912 kbps
.mka	MKA	MP3	32 kbps ~ 320 kbps
.mka	MKA	WMA	64 kbps ~ 160 kbps
.mka	MKA	AAC, HE-AAC	192 kbps

Video formats

If you have a high definition TV, your SoundBar allows you to play your video files with:

- Resolution: 1920 x 1080 pixels at
- Frame rate: 6 ~ 30 frames per second.

.avi files in AVI container

Audio codec	Video codec	Bit rate
PCM, Dolby Digital, DTS core, MP3, WMA	DivX 3.11, DivX 4.x, DivX 5.x, DivX 6.x	10 Mbps max
	MPEG 1, MPEG 2	20 Mbps (peak 40 Mbps)
	MPEG 4 ASP	10 Mbps max
	H.264/AVC HP@4.1/4.0; MP@3.2/3.1/3.0	20 Mbps (peak 40 Mbps)
	WMV9	20 Mbps

.divx files in AVI container

Audio codec	Video codec	Bit rate
PCM, Dolby Digital, MP3, WMA	DivX 3.11, DivX 4.x, DivX 5.x, DivX 6.x	10 Mbps max
	MPEG 1, MPEG 2	20 Mbps (peak 40 Mbps)
	MPEG 4 ASP	10 Mbps max

.mp4 or .m4v files in MP4 container

Audio codec	Video codec	Bit rate
Dolby Digital, MPEG, MP3, AAC, HE-AAC	MPEG 1, MPEG 2	20 Mbps (peak 40 Mbps)
	MPEG 4 ASP	10 Mbps max
	H.264/AVC HP@4.1/4.0; MP@3.2/3.1/3.0	20 Mbps (peak 40 Mbps)

.mkv files in MKV container

Audio codec	Video codec	Bit rate
PCM, Dolby Digital, DTS core, MPEG, MP3, WMA, AAC, HE-AAC	MPEG 1, MPEG 2	20 Mbps (peak 40 Mbps)
	MPEG 4 ASP	10 Mbps max
	H.264/AVC HP@4.1/4.0; MP@3.2/3.1/3.0	20 Mbps (peak 40 Mbps)
	WMV9	20 Mbps

.asf and .wmv files in ASF container

Audio codec	Video codec	Bit rate
PCM, Dolby Digital, MP3, WMA	MPEG 4 ASP	10 Mbps max
	H.264/AVC HP@4.1/4.0; MP@3.2/3.1/3.0	20 Mbps (peak 40 Mbps)
	WMV9	20 Mbps

.mpg and .mpeg files in PS container

Audio codec	Video codec	Bit rate
PCM, DTS core, MPEG, MP3	MPEG 1, MPEG 2	20 Mbps (peak 40 Mbps)
	MPEG 1, MPEG 2	20 Mbps (peak 40 Mbps)

.rm and .rmvb files in RM container (Available only in Asia Pacific and China)

Audio codec	Video codec	Bit rate
AAC, COOK	RV30, RV40	20 Mbps (peak 40 Mbps)

Amplifier

- Total output power: 150W RMS (30% THD)
- Frequency response: 20 Hz-20 kHz / ± 3 dB
- Signal-to-noise ratio: > 65 dB (CCIR) / (A-weighted)
- Input sensitivity:
 - AUX: 500 mV

Video

- HDMI output: 480i/576i, 480p/576p, 720p, 1080i, 1080p, 1080p24

Audio

- S/PDIF Digital audio input:
 - Coaxial: IEC 60958-3
 - Optical: TOSLINK
- Sampling frequency:
 - MP3: 32 kHz, 44.1 kHz, 48 kHz
 - WMA: 44.1 kHz, 48 kHz
- Constant bit rate:
 - MP3: 32 kbps - 320 kbps
 - WMA: 48 kbps - 192 kbps

USB

- Compatibility: Hi-Speed USB (2.0)
- Class support: USB Mass Storage Class (MSC)
- File system: FAT16, FAT32, NTFS
- Maximum memory support: < 2 TB

Main unit

- Power supply: 110-240V, 50-60Hz
- Power consumption: 25 W
- Standby power consumption: ≤ 0.5 W
- Speaker impedance: 8 Ohm
- Speaker drivers: 2 \times 64mm (2.5") woofer + 2 \times 25.4 mm (1") tweeter
- Frequency response: 150 Hz - 20 kHz
- Dimensions (WxHxD): 840 \times 48 \times 110 mm
- Weight: 2.2 kg

Subwoofer

- Output power: 90W RMS (30% THD)
- Power supply: 110-240 V, 50-60 Hz
- Power consumption: 30 W
- Standby power consumption: 0.5 W
- Impedance: 4 ohm
- Speaker drivers: 130 mm (5.25") woofer
- Frequency response: 20 Hz-150 Hz
- Dimensions (WxHxD): 226 \times 253 \times 280 mm
- Weight: 3.3 kg

Remote control batteries

- 2 \times AAA-R03-1.5 V

10 Troubleshooting



Warning

- Risk of electric shock. Never remove the casing of the product.

To keep the warranty valid, never try to repair the product yourself.

If you have problems using this product, check the following points before you request service. If you still have a problem, register your product and get support at www.philips.com/welcome.

Picture

No picture.

- Make sure that the TV is switched to the correct source for the SoundBar.

No picture on a TV connected through HDMI.

- Make sure that you use a High Speed HDMI cable to connect the SoundBar and TV. Some Standard HDMI cables do not display properly for some images or Deep Color.
- Make sure that the HDMI cable is not faulty. If it is faulty, replace it with a new cable.

Sound

No sound from SoundBar speakers.

- Make sure that the SoundBar is not muted.
- Connect the audio cable from your SoundBar to your TV or other devices. You do not need a separate audio connection when the SoundBar and TV are connected through **HDMI ARC** connection.
- Set up the audio for the connected device.
- Reset your SoundBar to its factory settings. Switch it off, and then switch on again.
- On your SoundBar, press the correct source button to select the correct audio input.

No sound from wireless subwoofer.

- 1 Switch off the SoundBar and then switch it on again.
- 2 Switch the SoundBar to AUX source.
- 3 Press and hold **CONNECT** on the subwoofer until the indicator on the back of the subwoofer blinks.

- 4 Press and hold **Navigation button** ► (right) for at least three seconds.

- ➔ When the wireless connection succeeds, the indicator on the subwoofer lights up.
- ➔ If the wireless pairing fails, repeat steps 1 to 4 to connect your subwoofer to the SoundBar.

Distorted sound or echo.

- If you play audio from the TV through the SoundBar, make sure that the TV is muted.

Audio and video are not synchronized.

- 1) Press **⬆** (Home). 2) Select **[Setup]**, and then press **OK**. 3) Select **[Audio]** > **[Lip Sync]**, and then press **OK**. Press the **Navigation buttons** (▲ / ▼) to select **[Auto]** or **[Manual]** and synchronize audio and video (see 'Synchronize picture and sound' on page 15).

Play

Cannot play a DivX file.

- Make sure that the DivX file is encoded according to the 'SoundBar' with the DivX encoder.
- Make sure that the DivX file is complete.

DivX or RMVB/RM subtitles do not display correctly.

- Make sure that the subtitle file name is the same as the movie file name (see 'Subtitles' on page 16).

Cannot read the contents of a USB storage device.

- Make sure that the format of the USB storage device is compatible with the SoundBar.
- Make sure that the file system on the USB storage device is supported by the SoundBar.

EasyLink does not work.

- Make sure that the SoundBar is connected to a Philips brand EasyLink TV, and the EasyLink option is turned on (see 'Switch on' on page 21).

When you switch on the TV, the SoundBar automatically switches on.

- This behavior is normal when you are using Philips EasyLink (HDMI-CEC). To make the SoundBar work independently, switch off EasyLink.

Network

Wireless network distorted or not found.

- Make sure that the wireless network is not disturbed by microwave ovens, DECT phones, or other neighboring Wi-Fi devices.
- Place the wireless router and the SoundBar within five meters of each other.
- If the wireless network does not work properly, try a wired network installation (see 'Wired connection' on page 13).

11 Index

A

advanced

restore default settings	25
software update	25
software version	25

amplifier

audio

HDMI audio	23
night mode	23
predefined modes	14
settings	23
source	12
specifications	28

audio formats

	26
--	----

audio options	16
---------------	----

auto standby	24
--------------	----

B

bass	15
------	----

browse

USB storage device	15
--------------------	----

C

care

environment	7
product	7

compliance

	4
--	---

computer

connect to	12
DLNA	19
media server software	19

computer network	12
------------------	----

connect

audio (analog cable)	12
audio (coaxial cable - digital)	12
audio (optical cable - digital)	11
audio from TV and other devices	11
home network	12
TV (HDMI ARC)	10
TV (HDMI)	11

connectors

back connectors	10
side connectors	10

control

Easylink (HDMI-CEC)	9
main unit	7
USB storage device	16

copyright protection	4
----------------------	---

D		
disable		
HDMI-CEC	21	
DivX		
subtitles	16	
DLNA	19	
E		
EasyLink (HDMI-CEC)		
control buttons	9	
enable		
auto standby	24	
HDMI-CEC	21	
screen saver	25	
energy		
auto standby	24	
screen saver	25	
sleep timer	24	
F		
factory settings	25	
FAQs	4	
H		
HDMI		
audio	23	
TV (HDMI ARC)	10	
HDMI-CEC	21	
I		
Internet		
connect to	12	
update software	25	
L		
language		
onscreen menu	24	
legal notices	4	
M		
main unit		
overview	7	
specifications	28	
media formats	26	
media server software	19	
Microsoft Windows Media Player 11	19	
Microsoft Windows Media Player 12	20	
multimedia content		
from USB storage device	15	
N		
network		
home network	12	
name a device	14	
settings	14	
troubleshooting	30	
update software	25	
wired connection	13	
wireless connection	13	
night mode	23	
O		
options		
audio	16	
overview		
HDMI-CEC	21	
main unit	7	
remote control	8	
settings	22	
P		
PC		
connect to	12	
DLNA	19	
media server software	19	
Philips EasyLink	21	
picture		
slideshows	17	
troubleshooting	29	
play		
slideshows	17	
troubleshooting	29	
USB	15	
power options		
auto standby	24	
screen saver	25	
sleep timer	24	
preference		
audio	23	
auto standby	24	
menu language	24	
screen saver	25	
sleep timer	24	
product specifications	26	

R	
recycling	7
remote control	
batteries	28
overview	8

S	
safety	
disposal	7
use of the product	6
screen saver	25
settings	
audio	23
auto standby	24
HDMI audio	23
HDMI-CEC	21
menu language	24
power	24
screen saver	25
sleep timer	24
video	22
side connectors	10
sleep timer	24
slideshowes	
animation	17
duration	17
musical	17
picture	17
software	
check current version	25
update	25
sound	
auto volume	15
bass	15
equalizer	15
predefined sound mode	14
surround sound	15
synchronize picture and sound	15
treble	15
troubleshooting	29
specifications	26
subwoofer	
specifications	28
synchronize picture and sound	15

T	
trademarks	5
treble	15
troubleshooting	
connection	29
network	30
picture	29
play	29
serial number	4
sound	29

U	
update software	
check current version	25
from a USB storage device	26
from network	25
USB	
format	28
USB storage device	
control buttons	16
play	16
specifications	28
update software	26

V	
video	
synchronize picture and sound	15
video formats	28

W	
wired network	
wired connection	13
wireless network	
wireless connection	13

Language Code

Abkhazian	6566	Inupiaq	7375	Pushto	8083
Afar	6565	Irish	7165	Russian	8285
Afrikaans	6570	Íslenska	7383	Quechua	8185
Amharic	6577	Italiano	7384	Raeto-Romance	8277
Arabic	6582	Ivrit	7269	Romanian	8279
Armenian	7289	Japanese	7465	Rundi	8278
Assamese	6583	Javanese	7486	Samoa	8377
Avestan	6569	Kalaallisut	7576	Sango	8371
Aymara	6589	Kannada	7578	Sanskrit	8365
Azerhijani	6590	Kashmiri	7583	Sardinian	8367
Bahasa Melayu	7783	Kazakh	7575	Serbian	8382
Bashkir	6665	Kernewek	7587	Shona	8378
Belarusian	6669	Khmer	7577	Shqip	8381
Bengali	6678	Kinyarwanda	8287	Sindhi	8368
Bihari	6672	Kirghiz	7589	Sinhalese	8373
Bislama	6673	Komi	7586	Slovensky	8373
Bokmål, Norwegian	7866	Korean	7579	Slovenian	8376
Bosanski	6683	Kuanyama; Kwanyama	7574	Somali	8379
Brezhoneg	6682	Kurdish	7585	Sotho; Southern	8384
Bulgarian	6671	Lao	7679	South Ndebele	7882
Burmese	7789	Latina	7665	Sundanese	8385
Castellano, Español	6983	Latvian	7686	Suomi	7073
Catalán	6765	Letzeburgesch;	7666	Swahili	8387
Chamorro	6772	Limburgan; Limburger	7673	Swati	8383
Chechen	6769	Lingala	7678	Svenska	8386
Chewa; Chichewa; Nyanja	7889	Lithuanian	7684	Tagalog	8476
中文	9072	Luxembourgish;	7666	Tahitian	8489
Chuang; Zhuang	9065	Macedonian	7775	Tajik	8471
Church Slav; Slavonic	6785	Malagasy	7771	Tamil	8465
Chuvash	6786	Magyar	7285	Tatar	8484
Corsican	6779	Malayalam	7776	Telugu	8469
esky	6783	Maltese	7784	Thai	8472
Dansk	6865	Manx	7186	Tibetan	6679
Deutsch	6869	Maori	7773	Tigrinya	8473
Dzongkha	6890	Marathi	7782	Tonga (Tonga Islands)	8479
English	6978	Marshallese	7772	Tsonga	8483
Esperanto	6979	Moldavian	7779	Tswana	8478
Estonian	6984	Mongolian	7778	Türkçe	8482
Euskara	6985	Nauru	7865	Turkmen	8475
	6976	Navaho; Navajo	7886	Twi	8487
Faroese	7079	Ndebele, North	7868	Uighur	8571
Français	7082	Ndebele, South	7882	Ukrainian	8575
Frysk	7089	Ndonga	7871	Urdu	8582
Fijian	7074	Nederlands	7876	Uzbek	8590
Gaelic; Scottish Gaelic	7168	Nepali	7869	Vietnamese	8673
Gallegan	7176	Norsk	7879	Volapuk	8679
Georgian	7565	Northern Sami	8369	Walloon	8765
Gikuyu; Kikuyu	7573	North Ndebele	7868	Welsh	6789
Guarani	7178	Norwegian Nynorsk;	7878	Wolof	8779
Gujarati	7185	Occitan; Provençal	7967	Xhosa	8872
Hausa	7265	Old Bulgarian; Old Slavonic	6785	Yiddish	8973
Herero	7290	Oriya	7982	Yoruba	8979
Hindi	7273	Oromo	7977	Zulu	9085
Hiri Motu	7279	Ossetian; Ossetic	7983		
Hrwatski	6779	Pali	8073		
Ido	7379	Panjabi	8065		
Interlingua (International)	7365	Persian	7065		
Interlingue	7365	Polski	8076		
Inuktitut	7385	Português	8084		

