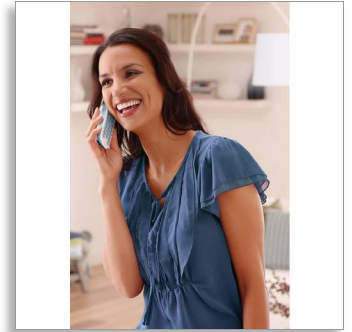


Philips BeNear
Cordless phone

- 2000-series
- White and Light Blue



CD2902WS



Colour your conversation

Superior sound, large display

Technology should be simple. That is why we have designed this phone to not only produce outstanding sound, but offer a large display and backlit keypad. Enjoy the superior performance of HQ-Sound, in a whole user-friendly way.

Exceptional sound

- HQ-Sound: high quality acoustic engineering for superb sound
- MySound profiles to match your sound preference
- Acoustic echo cancellation keeps your conversation echo-free
- Optimised antenna layout for great reception in any room
- Handset speakerphone allows you to talk hands-free

As convenient as it should be

- Large, 5.1 cm (2.0") dot-matrix display
- Save up to 100 of your favourite contacts in your phonebook
- Keypad backlight for fast access even in dark rooms
- Up to 17 hours of talk time

Eco-conscious product

- 60% reduction of radiation when ECO mode is activated
- Low power consumption: < 0.6 W in stand-by mode

PHILIPS

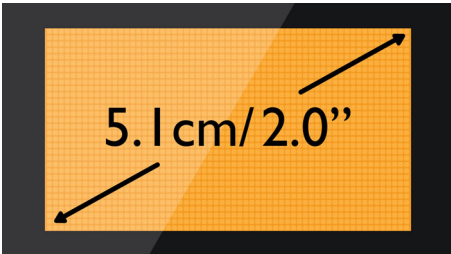
Highlights

100-name phone book



Always have the phone numbers of your loved ones available: Save up to 100 names in your phonebook.

5.1 cm (2.0") dot-matrix display



Large, 5.1 cm (2.0") dot-matrix display

Acoustic echo cancellation

No more of those annoying echoes when you are talking on the phone. With our acoustic echo cancellation, you always get a clear, undisturbed connection.

ECO mode



60% reduction of radiation when ECO mode is activated

Handset speakerphone



Hands-free mode uses a built-in loudspeaker to amplify the voice of the caller, allowing you to speak and listen during a call without holding the phone to your ear. This is especially useful if you want to share the call with others or simply multitask.

HQ-Sound



HQ-Sound: high quality acoustic engineering for superb sound reproduction. We build upon decades of experience and breakthrough innovations in developing Hi-Fi audio products and high-end headphones to deliver excellent voice clarity on our DECT phones. When it comes to improving sound quality, our acoustics engineers and architects have thought of everything — high quality components, digital signal processing, precise acoustic design, advanced testing and fine-tuning. The result is sound that is crisp, clear and authentic. Sound so good and natural, it is almost like being there in person.

Keypad backlight

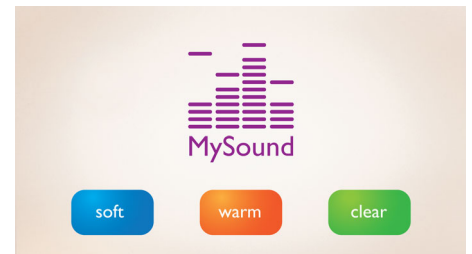
Keypad backlight for fast access even in dark rooms

Low power consumption: < 0.6 W



Philips phones are energy efficient and are designed to be respectful to the environment. The power consumed in stand-by mode is now less than < 0.6 W.

MySound profiles



Sound perception is subjective, and everyone has their own listening preference. MySound brings personality back to every conversation by allowing you to choose the audio profile that best matches your sound preferences: Clear—to make voices sound crisper and clearer; Soft—for friendly, softer tones; Warm—to make voices sound welcoming and warm.

Optimised antenna layout



Our optimised antenna layout ensures strong and stable reception, even in areas of the house where cordless transmission is difficult. Now you can take a call wherever you are in the house, and enjoy a long, uninterrupted conversation even as you walk around.

Specifications

Sound

- HQ-Sound
- Sound Profile: MySound
- Volume control on handset
- Ringtones on handset: 10 polyphonic

Picture/Display

- Display size: 5.1 cm/2.0"
- Display type: FSTN — dot matrix
- Backlight: Yes
- Backlight colour: Soft Amber

Convenience

- Menu structure in the handset: List Menu
- Speakerphone — talk hands-free
- Personalisation: Silence mode and Night mode
- Signal strength indicator: 3- bar indicator
- Battery level indicator: 3- bar battery icon
- Intercom — multiple handsets
- Date/Time display
- Alarm Clock
- Battery charge indication
- Programmable hot keys: Key 1 and 2
- Call Management: Call Waiting, Caller ID, Microphone mute, Missed Calls, Received Calls
- Key tone on/off
- Auto Registration
- Auto hang up
- Multi-base capability: 1
- Multi-handset capability: Up to 4
- Number of keys: 20
- Backlit keypad: Soft Amber

- Base Station keys: Paging key
- Up to 17 hrs talk time
- Up to 250 hrs standby time
- Charge time: 8 hours
- Line cord length: 1.8 m
- Power cord length: 1.8 m
- Range: Open field <300 m; indoor <50 m

Memory Capacity

- Phonebook: 100 names and numbers
- Redial List Capacity: 20 entries
- Call log entries: 50 entries
- Phonebook store in the base

Power

- Battery capacity: 600 mAh
- Battery type: AAA NiMH Rechargeable
- Mains power: AC 100-240 V ~50/60 Hz
- Power Consumption: < 0.6 W

Security

- Transmission encryption: Yes

Network Features

- Compatible: GAP

SAR Value

- Philips handsets: <0.1 W/kg

Eco Design

- EcoMode: automatic and manual



Issue date 2013-07-19

Version: 5.1.5

12 NC: 8670 000 87137
EAN: 87 12581 63500 8

© 2013 Koninklijke Philips N.V.
All Rights reserved.

Specifications are subject to change without notice.
Trademarks are the property of Koninklijke Philips N.V.
or their respective owners.

www.philips.com