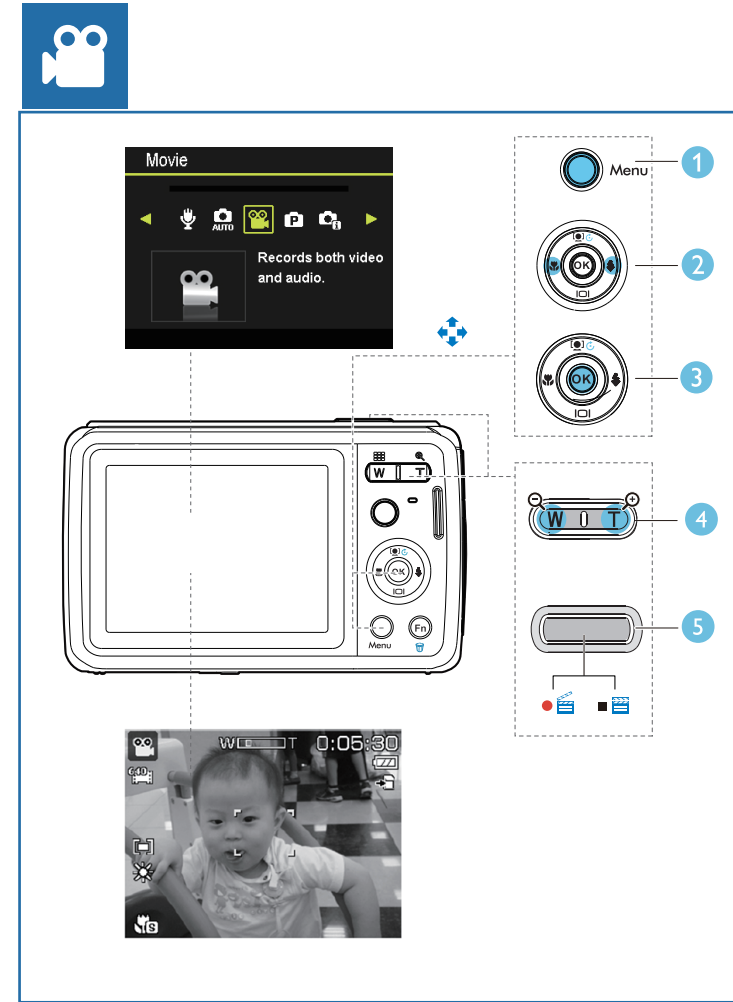
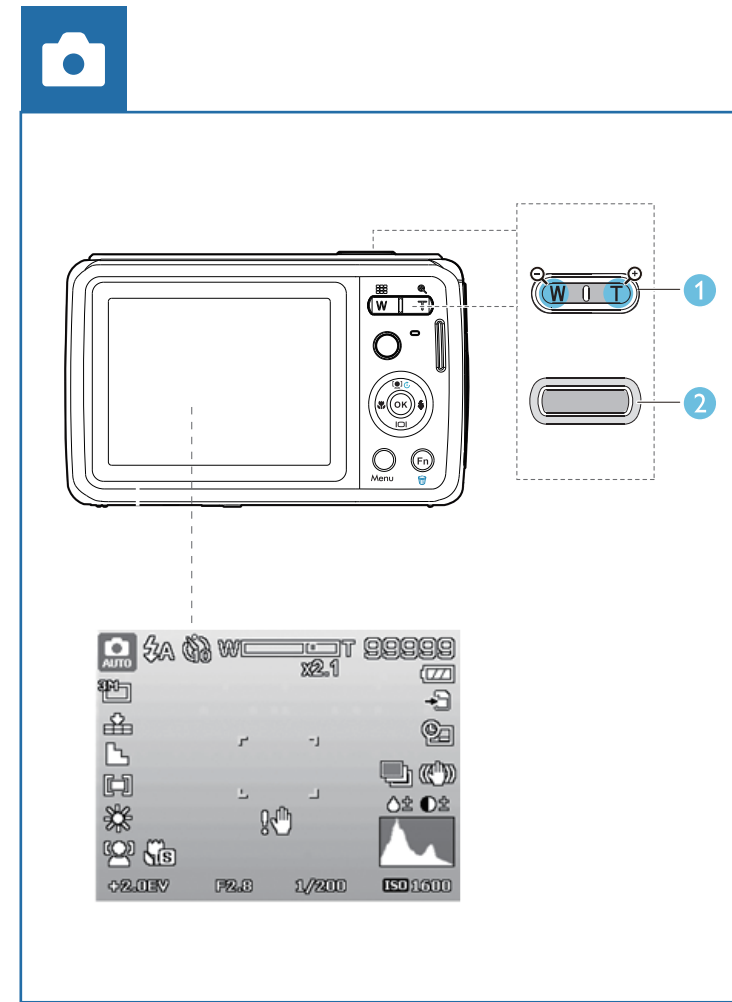
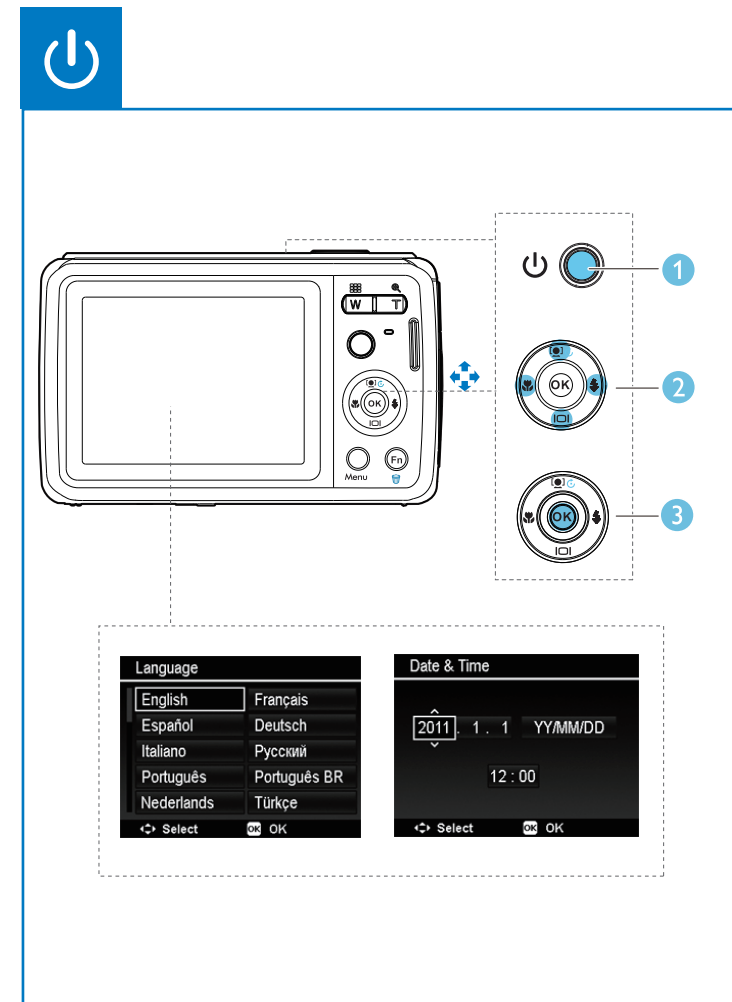
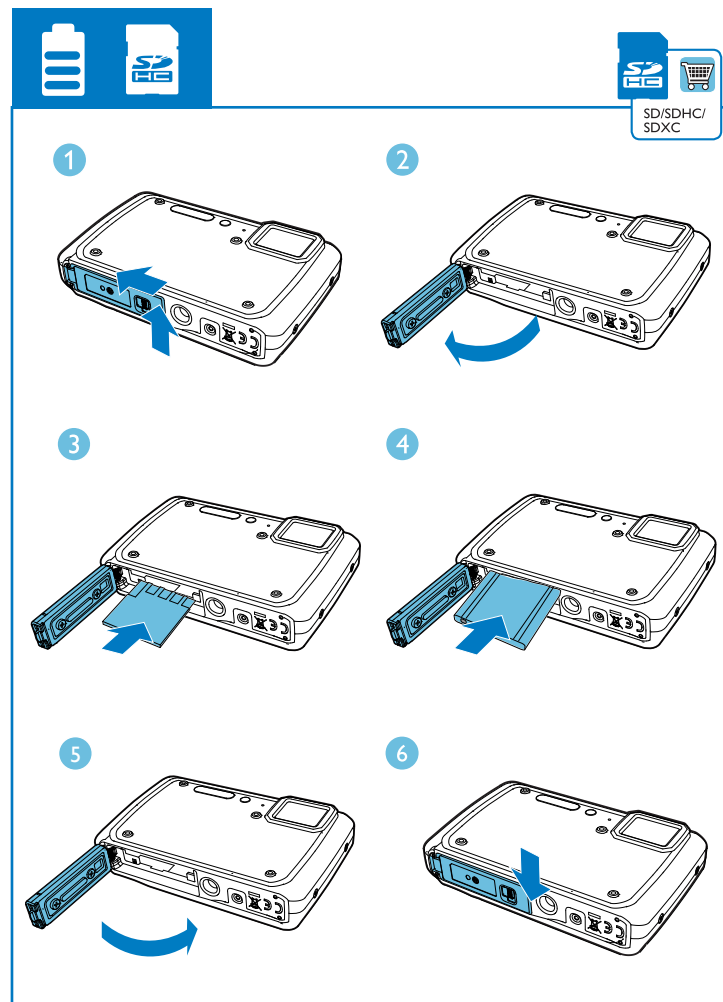
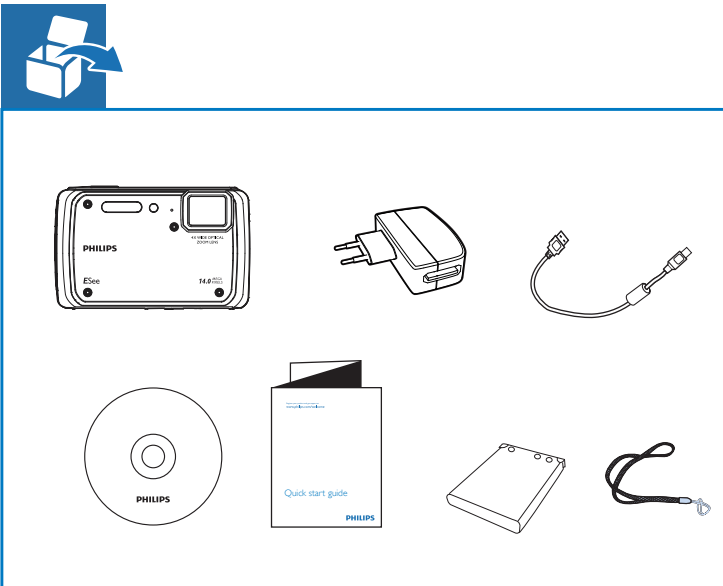


DSC150

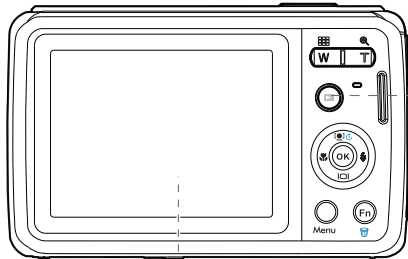


Quick start guide


PHILIPS








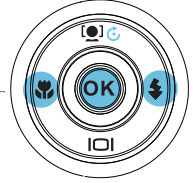
1



2

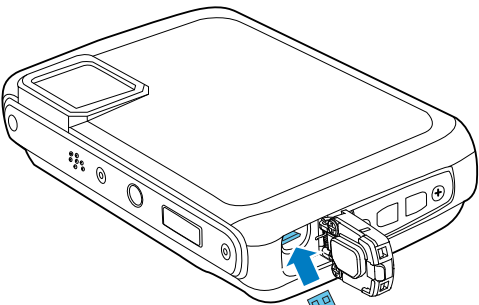


2

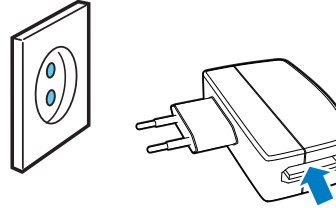


2

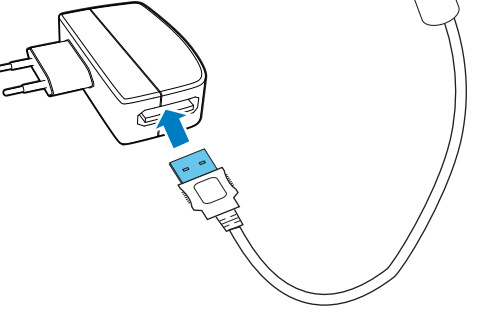




1

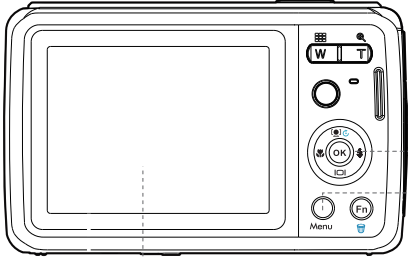


2

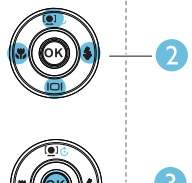


2

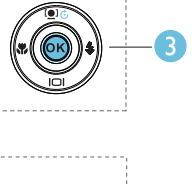





1



2



3



2

Important Safety

- 1 Read these instructions.
- 2 Keep these instructions.
- 3 Heed all warnings.
- 4 Follow all instructions.
- 5 Clean only with dry cloth.
- 6 Do not block any ventilation openings. Install in accordance with the manufacturer's instructions.
- 7 Do not install near any heat sources such as radiators, heat registers, stoves, or other apparatus (including amplifiers) that produce heat.
- 8 Only use attachments/accessories specified by the manufacturer.
- 9 Refer all servicing to qualified service personnel. Servicing is required when the camera has been damaged in any way, such as power-supply cord or plug is damaged, objects have fallen into the camera or does not operate normally.
- 10 Do not place any sources of danger on the camera (e.g. lighted candles).
- 11 Before use underwater, always securely close the protective covers on the battery/SD card compartment and USB port.
- 12 Never open any protective cover underwater or when the camera is still wet after use underwater.
- 13 After use in sea water, immediately rinse the camera with fresh water to prevent corrosion, then clean the camera with a soft dry cloth and let it dry in a well-ventilated place away from direct sunlight.
- 14 Do not use this camera in water deeper than five meters or for longer than two hours.

15 Battery usage CAUTION

- Before installation or removal of the battery, turn off the camera.
- Use only the provided battery or type of battery and charger that came with your camera. Using other types of battery or charger may damage the camera and invalidate your warranty.
- Before use, make sure that the Li-ion battery is inserted correctly into the camera. Inserting the battery upside down may cause damage to the camera and possibly cause an explosion.
- When the camera is used for an extended period of time, it is normal for the camera body to feel warm. If the camera is not to be used in a long period of time, save all photos/video clips to your local hard disk and remove the battery from the camera.
- An incorrect type of battery and low battery power level may cause the lens to be stuck up. Make sure that you use the correct battery type and use a fully charged battery.
- Risk of explosion if the battery is replaced with an incorrect type.
- Follow local rules to dispose of used batteries.

Any changes or modifications made to this device that are not expressly approved by Philips Consumer Lifestyle may void the user's authority to operate the equipment.

Notice

This product is designed to be waterproof in compliance with IEC 60529 IP58. Federal Communications Commission (FCC) Compliance

This equipment has been tested and found to comply with the limits for a Class B digital device, pursuant to Part 15 of the FCC Rules. These limits are designed to provide reasonable protection against harmful interference in a residential installation. This equipment generates, uses, and can radiate radio frequency energy and, if not installed and used in accordance with the instructions, may cause harmful interference to radio communications. However, there is no guarantee that interference will not occur in a particular installation. If this equipment does cause harmful interference to radio or television reception, which can be determined by turning the equipment off and on, the user is encouraged to try to correct the interference by one or more of the following measures:

- Reorient or relocate the receiving antenna.
- Increase the distance between the equipment and the receiver.
- Connect the equipment to an outlet on a circuit different from that to which the receiver is connected.
- Consult the dealer or an experienced radio/TV technician for help.

Declaration of Conformity

This device complies with Part 15 of the FCC rules. Operation is subject to the following conditions:

- This device may not cause harmful interference.
- This device must accept any interference received, including interference that may cause undesired operation.

Your product is designed and manufactured with high quality materials and components, which can be recycled and reused.

Never dispose of your product with other household waste. Please inform yourself about the local rules on the separate collection of electrical and electronic products and batteries. The correct disposal of these products helps prevent potentially negative consequences on the environment and human health.

Your product contains batteries, which cannot be disposed of with normal household waste. Please inform yourself about the local rules on separate collection of batteries. The correct disposal of batteries helps prevent potentially negative consequences on the environment and human health. Please visit www.recycle.philips.com for additional information on a recycling center in your area.

Note

- You can find the safety logo and power rating information at the bottom of the unit.

Production information

Battery	Model No.: NP-45 3.7V \approx 700mAh 2.6Wh
USB adaptor	Model No.: TR-06EU-V Input: 100-240VAC 50/60Hz 0.2A Output: 5.0V \approx 700mA

All registered and unregistered trademarks are property of their respective owners.

© 2012 Koninklijke Philips Electronics N.V.

All rights reserved.

DSC150_QSG_V1.0

