

Register your product and get support at

www.philips.com/welcome

AJ5350D



User manual

PHILIPS

Contents

1	Important	2
<hr/>		
2	Your clock radio	3
	What's in the box	3
<hr/>		
3	Get started	4
	Connect power	4
	Turn on	4
	Set time	4
	Select a source	4
<hr/>		
4	Play	5
	Play from iPod/iPhone	5
	Listen to FM radio	8
	Play from an external device	8
	Adjust volume	8
<hr/>		
5	Other features	9
	Set alarm timer	9
	Set sleep timer	9
	Adjust display brightness	9
<hr/>		
6	Product information	10
	Specifications	10
<hr/>		
7	Troubleshooting	11
<hr/>		
8	Notice	12
	Disposal of your old product	12

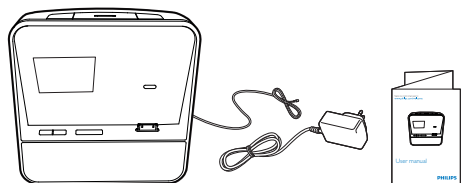
1 Important

- Read these instructions.
- Heed all warnings.
- Follow all instructions.
- Do not block any ventilation openings. Install in accordance with the manufacturer's instructions.
- Do not install near any heat sources such as radiators, heat registers, stoves, or other apparatus (including amplifiers) that produce heat.
- Protect the power cord from being walked on or pinched, particularly at plugs, convenience receptacles, and the point where they exit from the clock radio.
- Only use attachments/accessories specified by the manufacturer.
- Unplug this clock radio during lightning storms or when unused for long periods of time.
- Refer all servicing to qualified service personnel. Servicing is required when the clock radio has been damaged in any way, such as power-supply cord or plug is damaged, liquid has been spilled or objects have fallen into the clock radio, the clock radio has been exposed to rain or moisture, does not operate normally, or has been dropped.
- This clock radio shall not be exposed to dripping or splashing.
- Do not place any sources of danger on the clock radio (e.g. liquid filled objects, lighted candles).
- Where the plug of the Direct Plug-in Adapter is used as the disconnect device, the disconnect device shall remain readily operable.

2 Your clock radio

Congratulations on your purchase, and welcome to Philips! To fully benefit from the support that Philips offers, register your product at www.philips.com/welcome.

What's in the box



3 Get started

Always follow the instructions in this chapter in sequence.

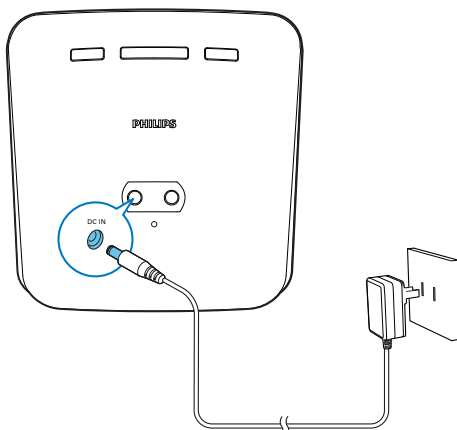
Connect power

Caution

- Risk of product damage! Make sure that the power voltage corresponds to the voltage printed on the back or underside of the clock radio.
- Risk of electric shock! When you unplug the power adapter, always pull the plug from the socket. Never pull the cord.
- Use the supplied power adapter only.

Note

- The type plate is located at the bottom of the clock radio.



Turn on

Press **⏻**.

- ↳ The clock radio switches to the last selected source.

Switch to standby mode

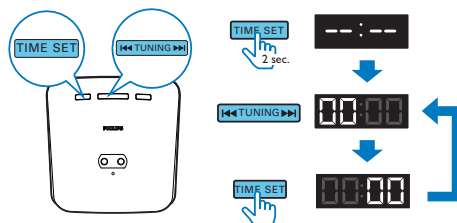
Press **⏻** again to switch the clock radio to standby mode.

- ↳ The clock (if set) is displayed.

Set time

Note

- You can only set time in standby mode.



Note

- When an iPod/iPhone is connected, the clock radio synchronizes time with the iPod/iPhone automatically.
- The accuracy of the transmitted time depends on the docked iPod/iPhone that transmits the time signal.

Select a source

Press **SOURCE** repeatedly to select a source: FM tuner, iPod/iPhone, or MP3 Link.

Note

- When an iPod/iPhone is docked, the clock radio switches to iPod/iPhone mode automatically.

4 Play

Play from iPod/iPhone

You can enjoy audio from iPod/iPhone through this clock radio.

Compatible iPod/iPhone

The clock radio supports the following iPod and iPhone models:

Made for:

- iPod touch (1st, 2nd, 3rd, and 4th generation)
- iPod classic
- iPod nano (1st, 2nd, 3rd, 4th, 5th, and 6th generation)
- iPhone 4S
- iPhone 4
- iPhone 3GS
- iPhone 3G
- iPhone

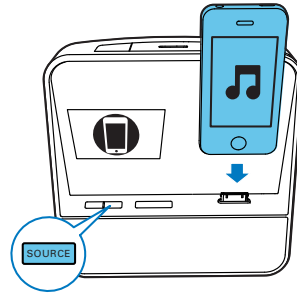
Install HomeStudio App

Philips **HomeStudio** app brings a suite of new features to your clock radio, including FM radio programming and a multi-function alarm clock. To enjoy more features, you are recommended to install this free **HomeStudio** app.

Note

- Make sure that your iPod/iPhone is connected to the Internet.

- 1 Press **SOURCE** to select the iPod/iPhone mode.
- 2 Insert your iPod/iPhone into the dock.



- 3 For the first-time use, you will be asked to install **HomeStudio** app on your iPod/iPhone.
- 4 Tap **[Yes]** (yes) to accept the installation request.
- 5 Follow the on-screen instructions to complete the installation.



Play music on the iPod/iPhone

Note

- Make sure that you have installed the **HomeStudio** app on your iPod/iPhone.

- 1 Tap **HomeStudio** icon on your iPod/iPhone.
↳ The clock/alarm setting screen appears.



2 Slide left to display the following screen.




3 Select a track from the playlist, and then press ▶.
 ↳ Music streams from your iPod/iPhone to the clock radio.

Use more features with "HomeStudio App"

☰ Note

- Make sure that your iPod/iPhone is placed in the clock radio.

Set clock, alarm and sleep timer:

- 1 Launch the **HomeStudio** app.
- 2 On the screen below, tap the setting icon .
 - ↳ You can set clock, sleep timer, and alarm for your clock radio.



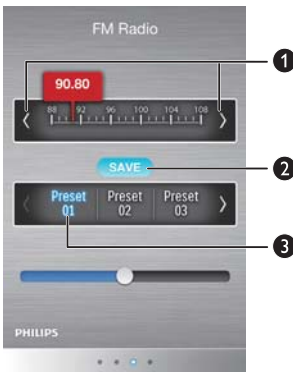
☰ Note

- The alarms set with your clock radio will appear under **[Dock Alarm]** (dock alarm) category.
- You can also set more alarms by tapping **+** on the top right of the alarm setting screen.



Store FM radio stations manually:

- 1 Slide right to display the screen as below.
- 2 Press </> to tune to a radio station.
- 3 Press **[SAVE]** (save), and then press a preset number:
 - ↳ **[SAVE]** (save) and the selected number turns blue.
 - ↳ The radio station is saved successfully.
- 4 If **[SAVE]** is activated, you can tune to other stations, and press a number to save stations directly.



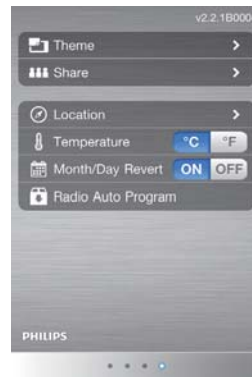
Tip

- If you need not preset more stations, press **[SAVE]** again to deactivate it (in gray).

Use more features:

Slide right to the next screen. You can:

- set the theme;
- share the information;
- set the location for weather report;
- choose temperature unit;
- select month/day display mode;
- store radio stations automatically by tapping **[Radio Auto Program]** (radio auto program).
 - ↳ **[Searching]** (searching) is displayed.
 - ↳ All available stations are stored.
 - ↳ The first stored radio station is broadcast automatically.



Charge the iPod/iPhone

When your clock radio is connected to power, the docked iPod/iPhone begins to charge automatically.

Remove the iPod/iPhone

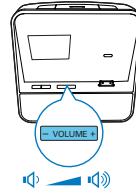
Pull the iPod/iPhone out of the dock.

Listen to FM radio

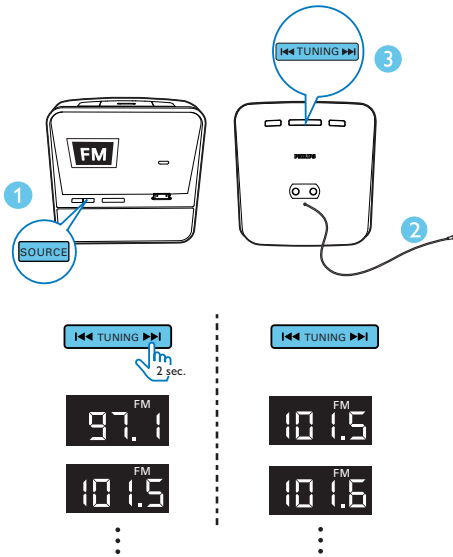
Note

- Keep the clock radio away from other electronic devices to avoid radio interference.
- For better reception, do not dock the iPod/iPhone when you listen to the radio. Fully extend and adjust the position of the FM antenna.

Adjust volume

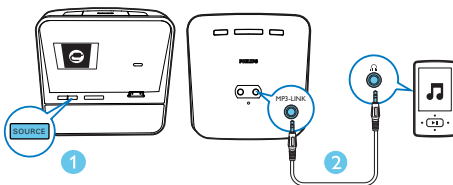


Tune to FM radio stations



Play from an external device

You can also listen to an external audio device through this clock radio.



5 Other features

- To stop the ringing alarm, press the corresponding **AL1/AL2**.
- ↳ The alarm repeats ringing for the next day.

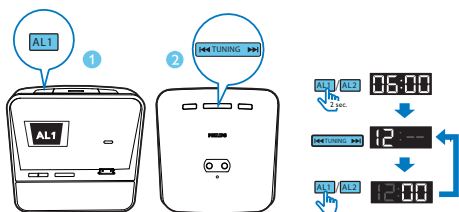
Set alarm timer

Set alarm

You can set two alarms to ring at different time. Buzzer, FM radio, or your last listened audio on the iPod/iPhone can be selected as alarm sound.

Note

- Make sure that you have set the clock correctly.



Tip

- If iPod/iPhone is selected as alarm source, but no iPod/iPhone is connected, the clock radio switches to buzzer source instead.
- For the alarm(s) set through the clock radio, you can also select the nature sounds stored in the **HomeStudio** app as alarm sound.

Activate/deactivate alarm timer

- 1 Press **AL1/AL2**.
↳ The alarm settings are displayed.
- 2 Press **AL1/AL2** repeatedly to activate or deactivate the alarm timer.
↳ **[AL1]** or **[AL2]** is displayed if the alarm timer is on and disappears if it is off.

Snooze alarm

When alarm sounds, press **SNOOZE**.

- ↳ The alarm snoozes and repeats ringing nine minutes later.

Set sleep timer

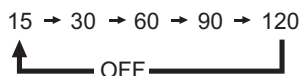
This clock radio can switch to standby mode automatically after a preset period.

Press **SLEEP** repeatedly to select the sleep timer period (in minutes).

- ↳ When the sleep timer is activated, **zZ** appears.

To deactivate the sleep timer:

Press **SLEEP** repeatedly until **[OFF]** appears.



Adjust display brightness

Press **BRIGHTNESS** repeatedly to select different brightness levels.

6 Product information

Note

- Product information is subject to change without prior notice.

Specifications

Amplifier

Total Output Power	10 W RMS
Frequency Response	63-16000 Hz, -3 dB
Signal to Noise Ratio	>60 dBA
Total Harmonic Distortion	<1%
MP3 link	600 mV RMS

Tuner (FM)

Tuning Range	87.5-108 MHz
Tuning Grid	50 KHz
Sensitivity	
- Mono, 26 dB S/N Ratio	<22 dBf
- Stereo, 46 dB S/N Ratio	<51.5 dBf
Total Harmonic Distortion	<3%
Signal to Noise Ratio	>50 dBA

Speakers

Speaker Impedance	8 ohm
Sensitivity Driver	1.5" x 2

General information

AC Power (power adapter)	Brand name: Philips; Model: AS190-100-AB180; Input: 100-240 V~, 50/60 Hz; 0.7 A; Output: 10 V \equiv 1.8 A
Operation Power Consumption	10 W
Standby Power Consumption	<1 W
Max. load for iPod/iPhone	5 V \equiv 1 A
Dimensions:	
Main Unit (W x H x D)	189 x 100 x 179 mm
Weight:	
-Main Unit	0.6 kg
-With Packing	1.1 kg

7 Troubleshooting



Warning

- Never remove the casing of this device.

To keep the warranty valid, never try to repair the system yourself.

If you encounter problems when using this device, check the following points before requesting service. If the problem remains unsolved, go to the Philips Web page (www.philips.com/support). When you contact Philips, make sure that the device is nearby and the model number and serial number are available.

No power

- Ensure that the AC power adaptor of the unit is connected properly.
- Ensure that there is power at the AC outlet.

No sound

- Adjust the volume.

No response from the unit

- Disconnect and reconnect the AC power adaptor; then turn on the unit again.

Poor radio reception

- Increase the distance between the unit and your TV or VCR.
- Fully extend the FM antenna.

Alarm does not work

- Set the clock/alarm correctly.

Clock/alarm setting erased

- Power has been interrupted or the power plug has been disconnected.
- Reset the clock/alarm.

8 Notice

Any changes or modifications made to this device that are not expressly approved by Philips Consumer Lifestyle may void the user's authority to operate the equipment.

Disposal of your old product

Your product is designed and manufactured with high quality materials and components, which can be recycled and reused. Never dispose of your product with other household waste. Please inform yourself about the local rules on the separate collection of electrical and electronic products and batteries. The correct disposal of these products helps prevent potentially negative consequences on the environment and human health. Please visit www.recycle.philips.com for additional information on a recycling center in your area.

Environmental information

All unnecessary packaging has been omitted. We have tried to make the packaging easy to separate into three materials: cardboard (box), polystyrene foam (buffer) and polyethylene (bags, protective foam sheet.) Your system consists of materials which can be recycled and reused if disassembled by a specialized company. Please observe the local regulations regarding the disposal of packaging materials, exhausted batteries and old equipment.



"Made for iPod" and "Made for iPhone" mean that an electronic accessory has been designed to connect specifically to iPod or iPhone respectively, and has been certified by the developer to meet Apple performance standards. Apple is not responsible for the operation of this device or its compliance with safety and regulatory standards. Please note that the use of this accessory with iPod or iPhone may affect wireless performance. iPod and iPhone are trademarks of Apple Inc., registered in the U.S. and other countries.

