

Always there to help you

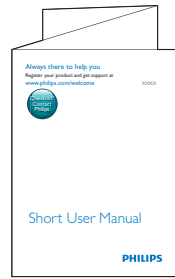
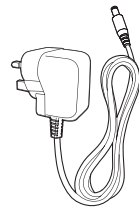
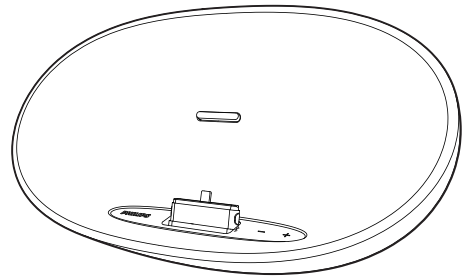
Register your product and get support at
www.philips.com/welcome



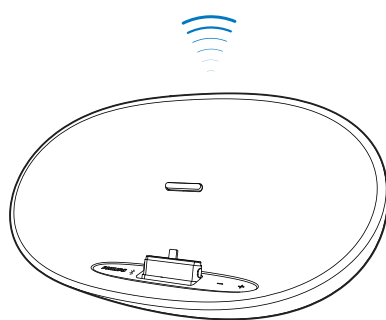
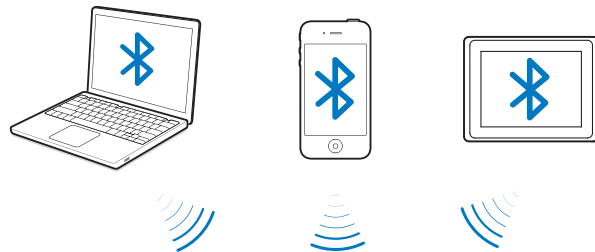
Short User Manual

PHILIPS

DS3480



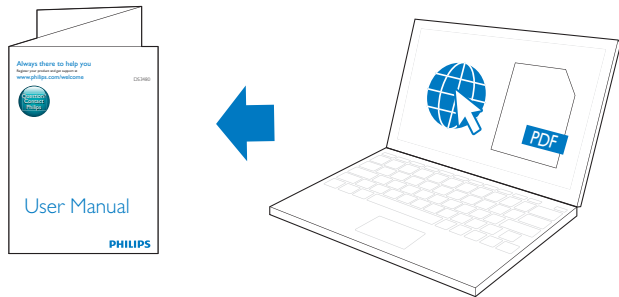
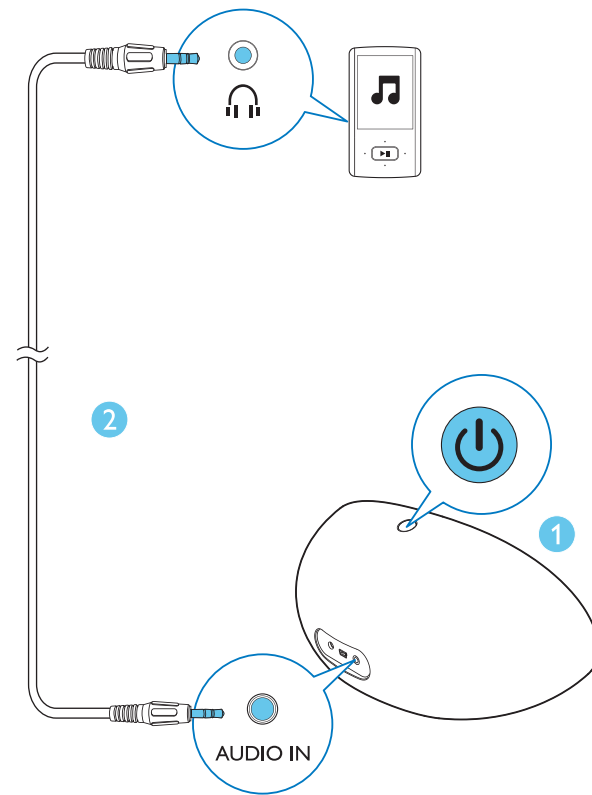
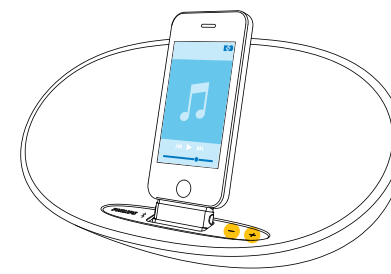
Before using your product, read all accompanying safety information.



iPod nano
7th generation
16GB

iPod touch
5th generation
32GB 64GB

iPhone 5
16GB 32GB 64GB

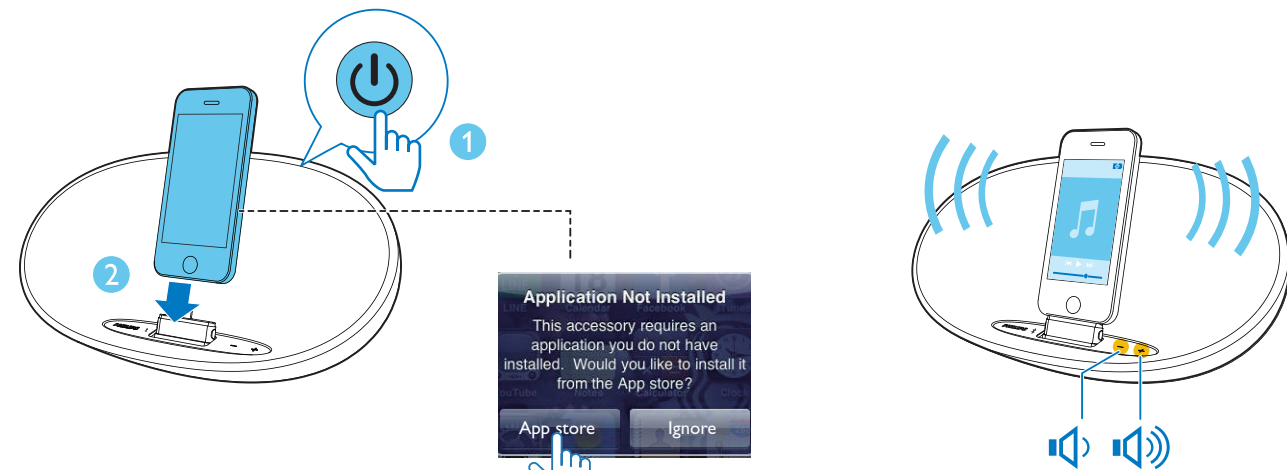
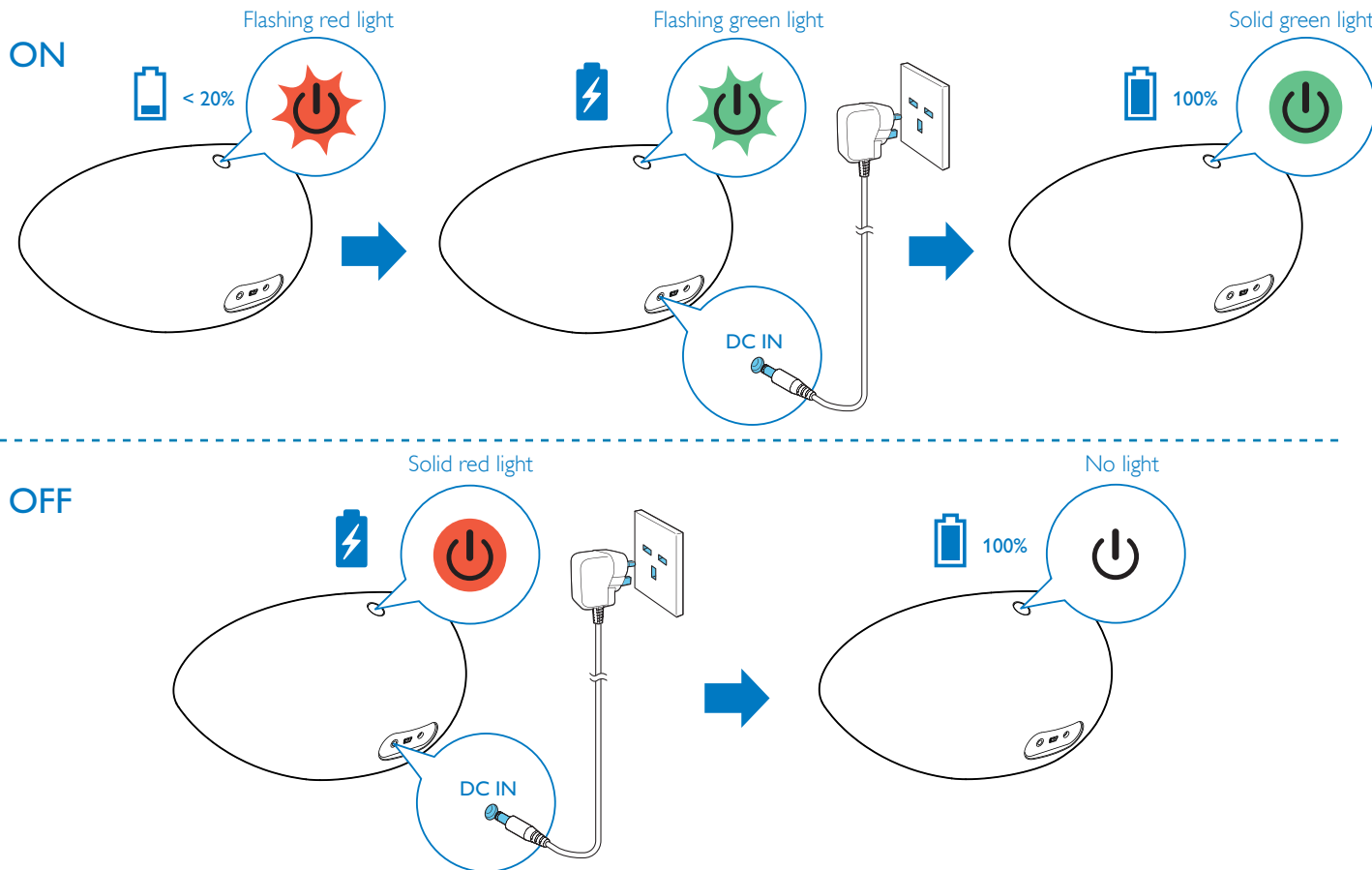


To download the full user manual, visit www.philips.com/support.

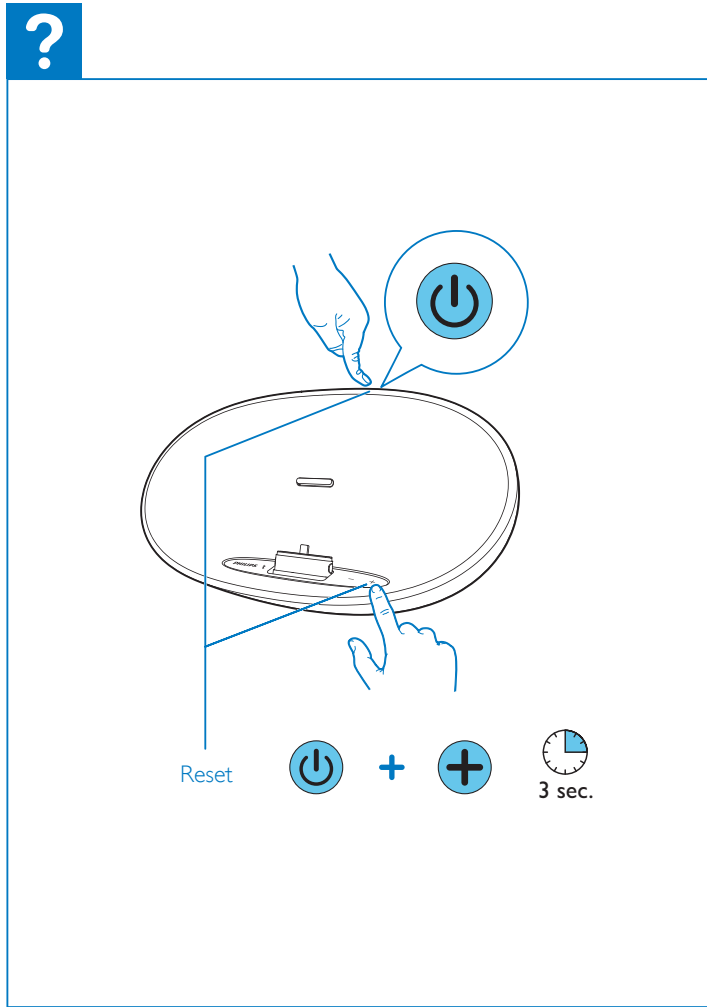
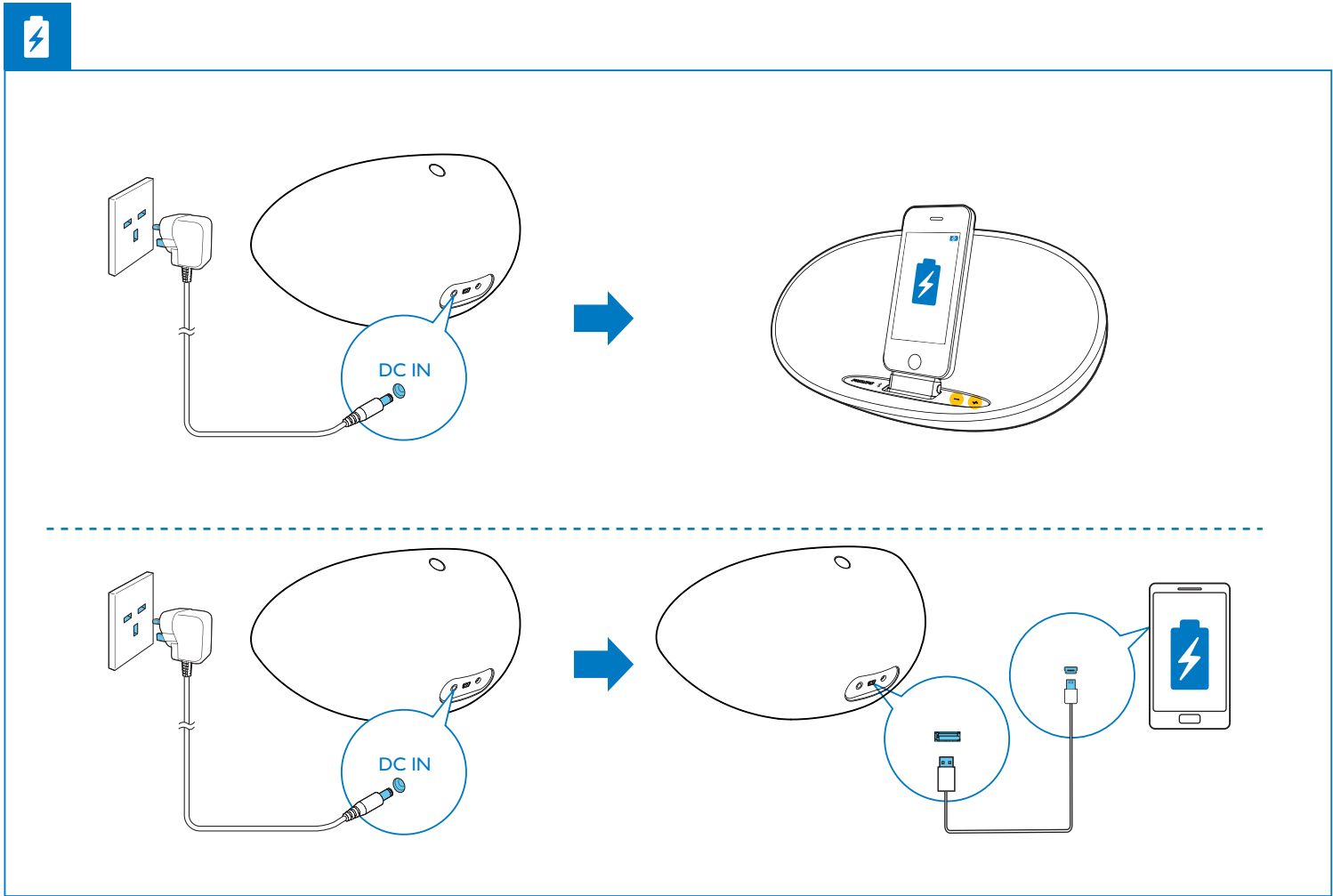
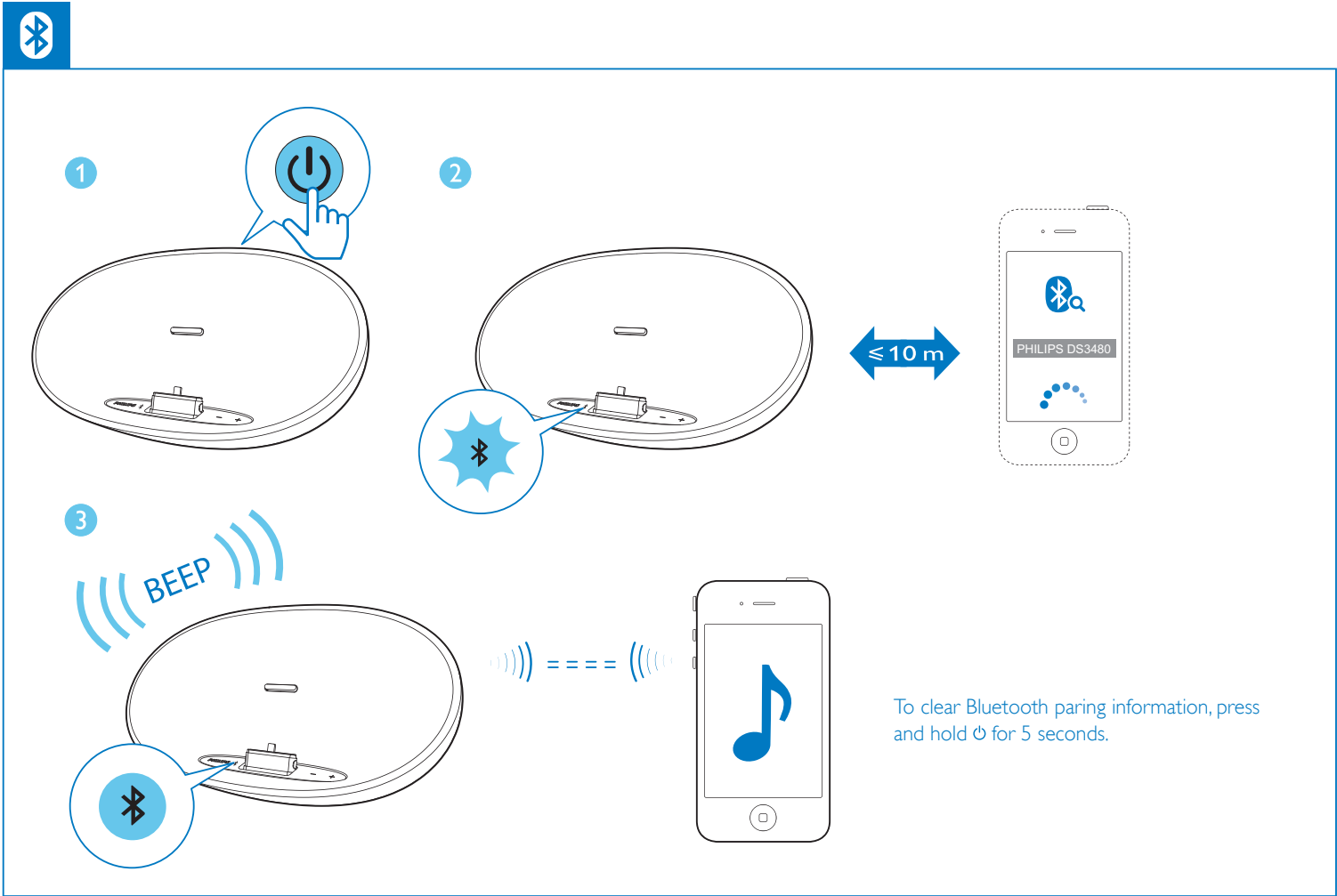


Specifications are subject to change without notice.
© 2013 Koninklijke Philips Electronics N.V.
All rights reserved.

DS3480_05_Short User Manual_V1.1



Follow the onscreen instructions to complete the installation.



1 Safety

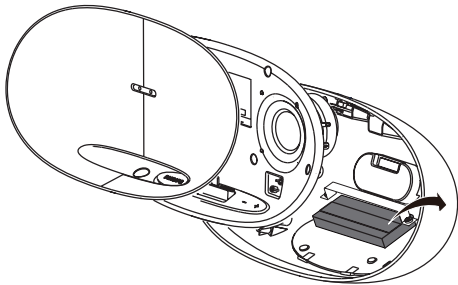
- Only use attachments/accessories specified by the manufacturer.
- Use only power supplies listed in the user manual.
- The product shall not be exposed to dripping or splashing.
- Do not place any sources of danger on the product (e.g. liquid filled objects, lighted candles).
- Batteries (battery pack or batteries installed) shall not be exposed to excessive heat such as sunshine, fire or the like.
- Danger of explosion if battery is incorrectly replaced. Replace only with the same or equivalent type.
- Where the plug of the Direct Plug-in Adapter is used as the disconnect device, the disconnect device shall remain readily operable.



When this crossed-out wheeled bin symbol is attached to a product it means that the product is covered by the European Directive 2002/96/EC. Please inform yourself about the local separate collection system for electrical and electronic products. Please act according to your local rules and do not dispose of your old products with your normal household waste. Correct disposal of your old product helps to prevent potential negative consequences for the environment and human health.



Your product contains batteries covered by the European Directive 2006/66/EC, which cannot be disposed with normal household waste. Please inform yourself about the local rules on separate collection of batteries because correct disposal helps to prevent negative consequences for the environmental and human health. Always bring your product to a professional to remove the built-in battery.



2 Notice

Any changes or modifications made to this device that are not expressly approved by Philips Consumer Lifestyle may void the user's authority to operate the equipment.

Care of the environment



Your product is designed and manufactured with high quality materials and components, which can be recycled and reused.

Environmental information

All unnecessary packaging has been omitted. We have tried to make the packaging easy to separate into three materials: cardboard (box), polystyrene foam (buffer) and polyethylene (bags, protective foam sheet.) Your system consists of materials which can be recycled and reused if disassembled by a specialized company. Please observe the local regulations regarding the disposal of packaging materials, and old equipment.

Trademark notice



"Made for iPod" and "Made for iPhone" mean that an electronic accessory has been designed to connect specifically to iPod or iPhone respectively, and has been certified by the developer to meet Apple performance standards. Apple is not responsible for the operation of this device or its compliance with safety and regulatory standards. Please note that the use of this accessory with iPod or iPhone may affect wireless performance. iPod and iPhone are trademarks of Apple Inc., registered in the U.S. and other countries.

Bluetooth

The Bluetooth® word mark and logos are registered trademarks owned by Bluetooth SIG, Inc. and any use of such marks by Philips is under license.

Compliance

CE 0560

This product complies with the radio interference requirements of the European Community. Hereby, Philips Consumer Lifestyle, declares that this product is in compliance with the essential requirements and other relevant provisions of Directive 1999/5/EC. A copy of the EC declaration of Conformity is available in the Portable Document Format (PDF) version of the user manual at www.philips.com/support.

Class II equipment symbol:



CLASS II apparatus with double insulation, and no protective earth provided.

Note

- The type plate is located in the battery compartment.

Specifications

Amplifier

Rated Output Power	2 X 5 W RMS
--------------------	-------------

General information

Power supply	Model: KSASB0241200200HK ;
- AC Power	Input: 100-240 V ~, 50/60Hz, 0.6A;
- Battery	Output: 12 V == 2.0 A
Operation Power Consumption	Li-ion battery
Standby Power Consumption	<18 W
Max. load for iPod/iPhone	<0.5 W
Dimensions	5 V == 1 A
- Main Unit (W x H x D)	274 x 143 x 109 mm
Weight	
- Main Unit	1.2 kg
Operating temperature and humidity:	0°C to 45°C, 5% to 90% Humidity for all climates.
Storage temperature and humidity:	-40 °C to 70 °C, 5% to 95%

Bluetooth

Bluetooth version	V2.1+ EDR
Frequency band	2.402-2.480 GHzISM Band
Rang	10m (free space)