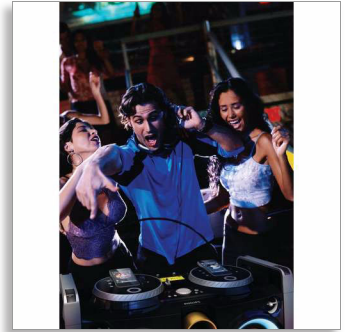




Philips
Mini Hi-Fi System

Mix like a DJ

30-pin dock for iPod/iPhone
USB Direct
300W, extendable with FWP1000



FWP3200D



The ideal party machine

Obsessed with sound

Get the ultimate party going now. With the Philips Mini Hi-Fi system's dual rotatable docks, you can play & charge your iPhones/iPods, mix & scratch music from the devices' libraries. Advanced DJ features are also yours with the djay app

Enjoy your music from multiple sources

- Dual rotatable dock for playing & charging your iPod/iPhone
- Channel faders for swapping playback between 2 iPods/iPhones
- USB Direct for easy MP3 music playback
- MP3 Link for portable music playback

Enrich your sound experience

- MAX Sound for instant power boost
- Digital Sound Control for optimized music style settings
- 300W RMS total output power

Extend your party machine music

- Simple setup with any Philips party machines
- Flexible placement around the house
- Dynamic lighting for dancing to the beat
- Optional djay app for mixing and scratching iPhone music

PHILIPS

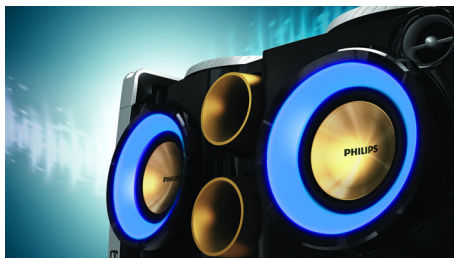
Highlights

Dual rotatable dock



Dual rotatable dock for playing & charging your iPod/iPhone

Dynamic lighting



Step in time to the dazzling beat of music. Cool lights blink to the rhythm of songs, adding fun and excitement to tunes. When you don't want the lights on, you can simply turn the feature off. Add glam and spice to dance parties, sizzling celebrations and cool events with these sensational dynamic lights.

MAX Sound



MAX Sound technology produces an instant boost in bass, maximizing volume performance and instantly creating the most impressive listening experience with just the touch of a button. Its sophisticated electronic circuitry calibrates existing sound and volume settings, instantly boosting bass and volume to maximum levels without distortion. The end result is a noticeable amplifying of both sound spectrum and volume and a potent audio boost that will add mileage to any music.

Optional dJ app

Optional dJ app for mixing and scratching iPhone music

Channel faders



Channel faders for swapping playback between 2 iPods/iPhones

Simple setup

Simple setup with any Philips party machines



Specifications

Audio playback

- Playback media: USB flash drive
- USB Direct playback modes: fast backward/fast forward, play/pause, previous/next, program play, repeat, shuffle, stop

Loudspeakers

- Number of speaker boxes: 2
- Speaker drivers: 2" tweeter, 5.25" woofer
- Loudspeaker enhancement: 2-way
- Speaker types: bass reflex speaker system

Sound

- Sound Enhancement: MAX Sound, Dynamic Bass Boost 3 steps, Digital Sound Control 4 modes
- Total Sound Power (RMS): 300 W

Tuner/Reception/Transmission

- Antenna: FM antenna
- Station presets: 20
- Tuner bands: FM
- Tuner enhancement: auto digital tuning, auto scan, Easy set (plug & play)

Connectivity

- Headphone: 3.5 mm
- Microphone: dual microphone sockets
- USB: USB host
- MP3 Link: 3.5mm stereo line in

Convenience

- Karaoke: MIC volume, echo control
- Display type: LCD display, VFD display

Accessories

- Remote control: 13-key
- User Manual: English
- Cables/Connection: MP3 Link cable, power cord
- Others: Quick start guide, batteries for remote control, FM antenna
- Warranty: World Wide Guarantee booklet

Dimensions

- Packaging height: 442 mm
- Packaging width: 780 mm
- Packaging depth: 430 mm
- Product dimensions (WxDxH): 704 x 364 x 385 mm

iPhone compatibility

- Compatible with: iPhone, iPhone 3G, iPhone 3GS, iPhone 4, iPhone 4S

iPod compatibility

- Compatible with: iPod classic, iPod mini, iPod nano, iPod shuffle, iPod touch 2nd generation, iPod touch 3rd generation, iPod touch 4th generation

Power

- Power supply: 100 - 240V AC, 50/60Hz



Issue date 2014-06-11

Version: 2.0.5

12 NC: 8670 000 94227
EAN: 87 12581 65760 4

© 2014 Koninklijke Philips N.V.
All Rights reserved.

Specifications are subject to change without notice.
Trademarks are the property of Koninklijke Philips N.V.
or their respective owners.

www.philips.com

* Avoid extensive use of the set in a volume higher than 85 decibel because this may damage your hearing.