

Register your product and get support at
www.philips.com/welcome

CEM1000



EN	User manual
ES	Manual del usuario
PT-BR	Manual do Usuário
ZH-TW	使用手冊
ZH-CN	用户手册

PHILIPS

Contents

1 Important	4
Safety	4
Notice	4

2 Your car audio system	6
Introduction	6
What's in the box	6
Overview of the main unit	7
Overview of the remote control	8

3 Get started	10
Install the car audio	10
Install remote control battery	14
Turn on	14
Set clock	14

4 Listen to radio	15
Tune to a radio station	15
Store radio stations in memory	15
Store stations manually	15
Tune to a preset station	15

5 Play with RDS	16
Turn on RDS	16
Select program type	16
Select alternate frequencies	16
Receive traffic announcement	17
Set RDS clock	17

6 Play audio files	18
Play a disc	18
Search for an MP3/WMA track	18
View play information	18
Repeat play	19
Shuffle play	19
Intro play	19
Connect external sound source	19

7 Adjust sound	20
Adjust volume	20
Mute	20
Turn Dynamic Bass Boost (DBB) on/off	20
Select preset equalizer	20
Other sound settings	20

8 Adjust system settings	21
Select anti-shock setting	21
Turn beep sound on/off	21
Select blackout setting	21
Turn demo mode on/off	21
Reset	22

9 Additional information	23
Detach the front panel	23
Replace fuse	23
Remove the unit	23

10 Product information	24
-------------------------------	----

11 Troubleshooting	25
---------------------------	----

12 Glossary	26
--------------------	----

1 Important

Safety

- Read and understand all instructions before you use your apparatus. If damage is caused by failure to follow instructions, the warranty does not apply.
- This apparatus is designed for negative ground (earth) 12 V DC operation only.
- To ensure safe driving, adjust the volume to a safe and comfortable level.
- Improper fuses can cause damage or fire. When you need to change the fuse, consult a professional.
- Use only the supplied mounting hardware for a safe and secure installation.
- To avoid short circuit, do not expose the apparatus, remote control or remote control batteries to rain or water.
- Never insert objects into the ventilation slots or other openings on the apparatus.
- Clean the apparatus and frame with a soft, damp cloth. Never use substances such as alcohol, chemicals or household cleaners on the apparatus.
- Never place any objects other than discs into the apparatus.
- Never use solvents such as benzene, thinner, cleaners available commercially, or anti-static sprays intended for discs.
- Visible and invisible laser radiation when open. Avoid exposure to beam.
- Risk of damage to the apparatus screen! Never touch, push, rub or strike the screen with any object.



Caution

- Use of controls or adjustments or performance of procedures other than herein may result in hazardous radiation exposure or other unsafe operation.

Notice



Be responsible
Respect copyrights

The making of unauthorized copies of copy-protected material, including computer programs, files, broadcasts and sound recordings, may be an infringement of copyrights and constitute a criminal offence. This equipment should not be used for such purposes.

This apparatus includes this label:



Recycling



Your product is designed and manufactured with high quality materials and components, which can be recycled and reused. When you see the crossed-out wheel bin symbol attached to a product, it means the product is covered by the European Directive 2002/96/EC:



Never dispose of your product with other household waste. Please inform yourself about the local rules on the separate collection of electrical and electronic products. The correct disposal of your old product helps prevent potentially negative consequences on the environment and human health.

Your product contains batteries covered by the European Directive 2006/66/EC, which cannot be disposed of with normal household waste.

Please inform yourself about the local rules on separate collection of batteries. The correct disposal of batteries helps prevent potentially negative consequences on the environment and human health.



This product complies with the radio interference requirements of the European Community.

Environmental information

All unnecessary packaging has been omitted. We have tried to make the packaging easy to separate into three materials: cardboard (box), polystyrene foam (buffer) and polyethylene (bags, protective foam sheet.)

Your system consists of materials which can be recycled and reused if disassembled by a specialized company. Please observe the local regulations regarding the disposal of packaging materials, exhausted batteries and old equipment.

Any changes or modifications made to this device that are not expressly approved by Philips Consumer Lifestyle may void the user's authority to operate the equipment.

2010 © Koninklijke Philips Electronics N.V. All rights reserved.

Specifications are subject to change without notice. Trademarks are the property of Koninklijke Philips Electronics N.V. or their respective owners. Philips reserves the right to change products at any time without being obliged to adjust earlier supplies accordingly.

2 Your car audio system

Congratulations on your purchase, and welcome to Philips! To fully benefit from the support that Philips offers, register your product at www.philips.com/welcome.

Introduction

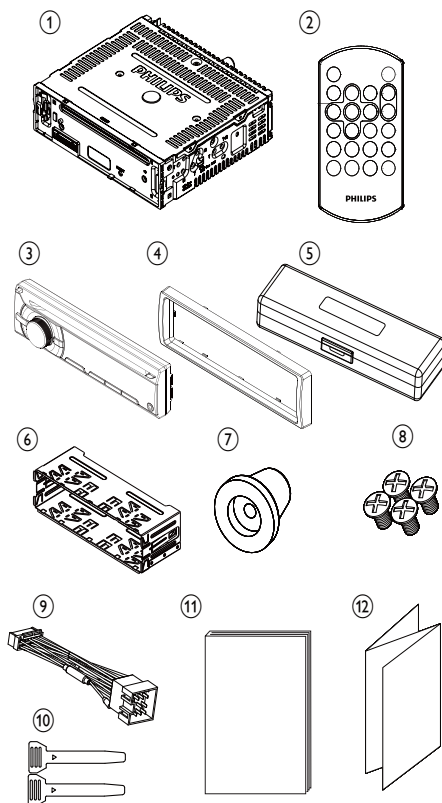
With the in-car audio system, you can enjoy your drive while listening to:

- FM or AM (MW) radio
- Audio from CD or MP3 disc
- Audio from external devices

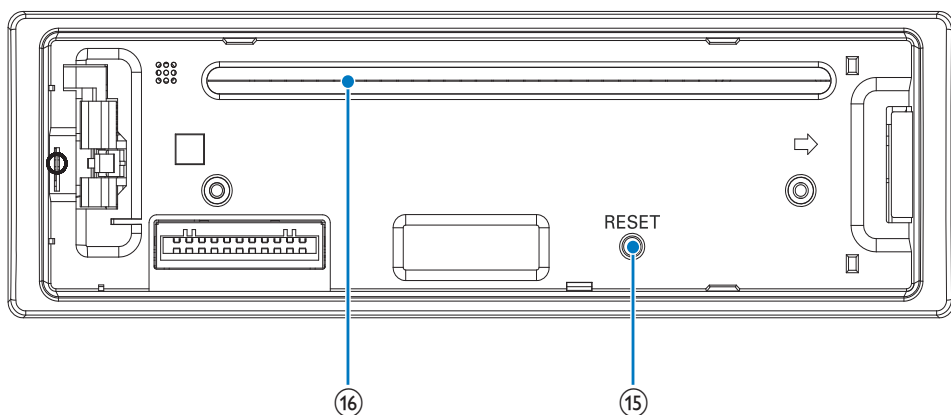
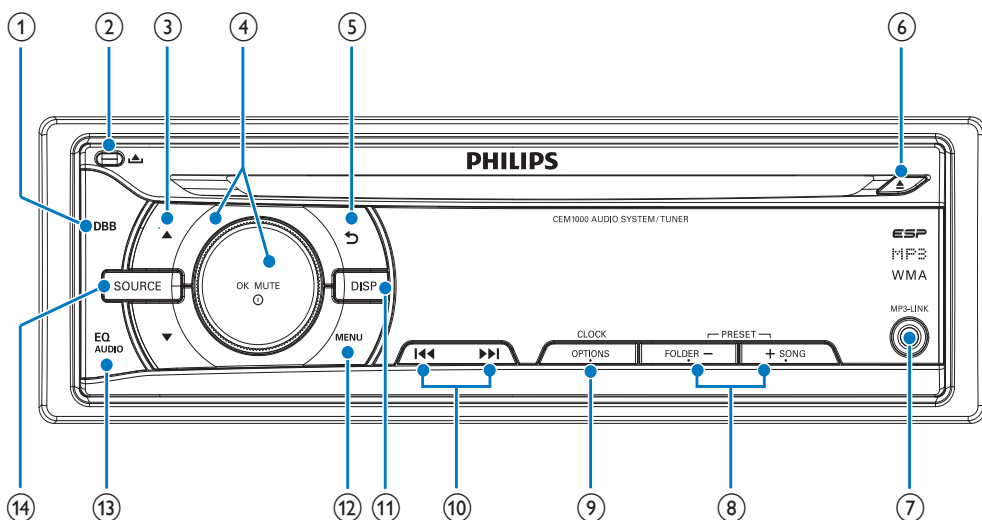
What's in the box

Check and identify the contents of your package:

- ① Main unit
- ② Remote control
- ③ Front panel
- ④ Trim plate
- ⑤ Carrying case for front panel
- ⑥ Sleeve
- ⑦ Rubber cushion
- ⑧ Screws x 4 pcs
- ⑨ Standard ISO connector
- ⑩ Disassembly tools x 2 pcs
- ⑪ User manual
- ⑫ Quick start guide



Overview of the main unit



① DBB

- Turn on or off Dynamic Bass Boost (DBB) sound.

②

- Unlock the panel.

③

- Select tuner band.
- Select MP3/WMA folder.
- Scroll up/down menu.

④ OK/MUTE

- Turn the unit on or off.
- Confirm selection.
- Mute or unmute sound.
- Rotate to adjust volume.

⑤

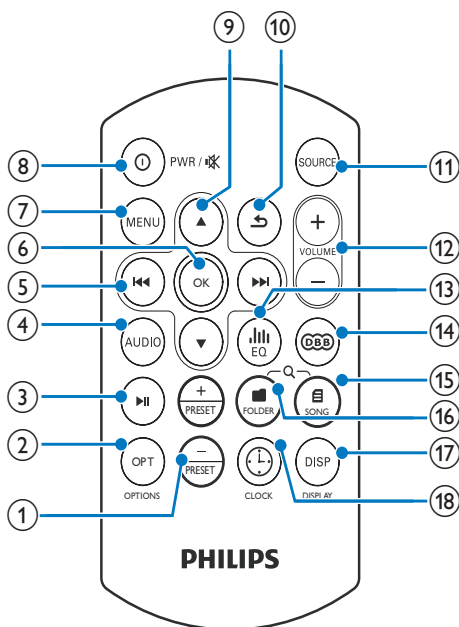
- Return to previous menu.

⑥

- Eject disc.

- ⑦ **MP3 LINK**
 - Connect external audio device.
- ⑧ **+SONG/FOLDER -**
 - Select preset radio station.
 - Search for track/folder.
- ⑨ **OPTIONS/CLOCK**
 - Access option menu.
 - View clock.
- ⑩ **⏮️⏭️**
 - Tune for radio station.
 - Skip/search for track.
 - Fast backward/forward playback.
- ⑪ **DISP**
 - Display current status.
- ⑫ **MENU**
 - Access system menu.
- ⑬ **EQ AUDIO**
 - Select equalizer (EQ) setting.
 - Access audio setting menu.
- ⑭ **SOURCE**
 - Select audio source.
- ⑮ **RESET**
 - Restore default settings
- ⑯ **Disc slot**

Overview of the remote control



- ① **+ / PRESET / - / RESET**
 - Select preset radio station.
- ② **OPT**
 - Access option menu.
- ③ **▶️⏸️**
 - Start play.
 - Pause or resume play.
- ④ **AUDIO**
 - Access audio setting menu.
- ⑤ **⏮️⏭️**
 - Tune to a radio station
 - Skip track.
 - Fast backward/forward playback
- ⑥ **OK**
 - Confirm selection.
- ⑦ **MENU**
 - Access system menu.

- ⑧ **⏻/PWR/⏻**
 - Turn the unit on or off.
 - Mute or restore volume.
- ⑨ **▲/▼**
 - Select tuner band.
 - Scroll up/down menu.
 - Select MP3/WMA folder.
- ⑩ **↶**
 - Return to previous menu.
- ⑪ **SOURCE**
 - Select audio source.
- ⑫ **VOLUME +/-**
 - Adjust volume.
- ⑬ **EQ**
 - Select equalizer (EQ) settings.
- ⑭ **DBB**
 - Turn on or off Dynamic Bass Boost (DBB) sound.
- ⑮ **SONG**
 - Search for track.
- ⑯ **FOLDER**
 - Search for folder.
- ⑰ **DISP**
 - Display current status.
- ⑱ **CLOCK**
 - View clock.

3 Get started

! Caution

- Use the controls only as stated in this user manual.

Always follow the instructions in this chapter in sequence.

If you contact Philips, you will be asked for the model and serial number of your apparatus. The model number and serial number are on the bottom of your apparatus. Write the numbers here:

Model No. _____

Serial No. _____

Install the car audio

These instructions are for a typical installation. However, if your car has different requirements, make the corresponding adjustment. If you have any questions regarding installation kits, consult your Philips car audio dealer.

! Caution

- This unit is designed for negative ground (earth) 12 V DC operation only.
- Always install this unit in the car dashboard. Other locations can be dangerous as the rear of the unit heats up during use.
- To avoid short-circuit: before you connect, ensure that the ignition is off.
- Ensure that you connect the yellow and red power supply leads after all other leads are connected.
- Ensure that all loose leads are insulated with electrical tape.
- Ensure that the leads do not get caught under screws or in parts that will move (e.g. seat rail).
- Ensure that all ground (earth) leads are run to a common ground (earth) point.
- Use only the supplied mounting hardware for a safe and secure installation.
- Improper fuses can cause damage or fire. When you need to change the fuse, consult a professional.

Note on the power supply lead (yellow)

- When you connect other devices to this apparatus, ensure that the rating of the car circuit is higher than the total fuse value of all the connected devices.

Notes on speaker connection

- Never connect speaker wires to the metal body or chassis of the car.
- Never connect speaker wires with stripes to one another.

Select country/region

≡ Note

- Select correct country/region for this unit, otherwise the unit can not work properly.

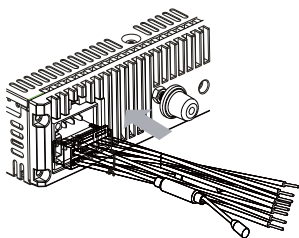
- 1 Press  to turn on the unit.
↳ **[SELECT OPERATING REGION]** is displayed.
- 2 Rotate  to select an option:
 - [USA] (United States)
 - [Latin] (Latin America)
 - [Europe] (Western Europe)
 - [ASIA] (Asia Pacific)
 - [Mid-East] (Middle East)
 - [Russia] (Russia)
- 3 Press  to confirm.

Connection: for cars with ISO connectors

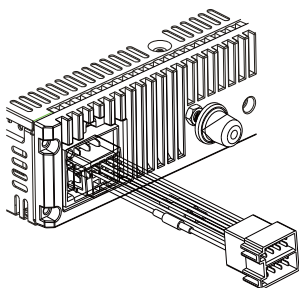
! Caution

- Ensure that all loose leads are insulated with electrical tape.

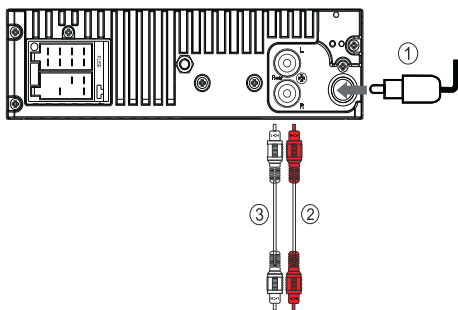
- 1 Pull out the ISO connectors from car dashboard and connect them to the bigger end of the supplied standard connector.



- 2 Connect the other end of the supplied standard connector to the unit.



- 3 Connect the antenna and amplifier as illustrated, if applicable. You can connect the car audio to the amplifier through RCA-TO-RCA cables (not supplied).



	Connector	Connect to
1	ANTENNA	Antenna
2	REAR LINE OUT R	Rear right speaker
3	REAR LINE OUT L	Rear left speaker

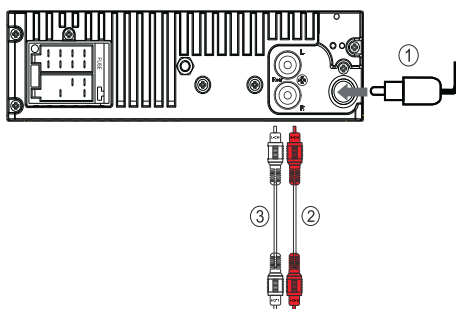
Connection: for cars without ISO connectors



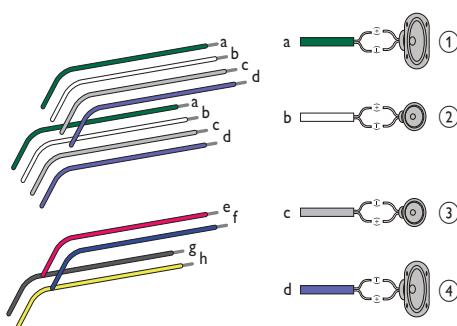
Caution

- Be sure to connect the black ground (earth) lead first.

- 1 Connect the antenna and amplifier as illustrated, if applicable.



	Connector	Connect to
1	ANTENNA	Antenna
2	REAR LINE OUT R	Rear right speaker
3	REAR LINE OUT L	Rear left speaker



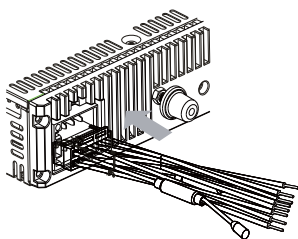
- 2 Cut off the bigger end of the supplied standard connector.

- 3** Check the car's wiring carefully, then connect them to the supplied standard connector.

1	Green/black strip	Left speaker (Rear)
2	White/black strip	Left speaker (Front)
3	Gray/black strip	Right speaker (Front)
4	Purple/black strip	Right speaker (Rear)

e	RED	Ignition key +12V DC when ON/ACC
f	BLUE	Motor/electric antenna relay control lead/ Amplifier relay control lead
g	BLACK	Ground
h	YELLOW	To the +12V car battery which is energized at all times

- 4** Connect the supplied standard connector to the unit.

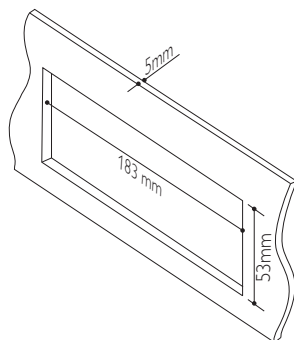


Tip

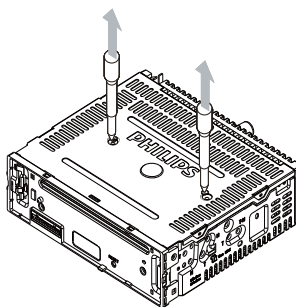
- The pin arrangement for the ISO connectors depends on the type of vehicle you drive. Be sure to make proper connections to prevent damage to the unit.

Mount into the dashboard

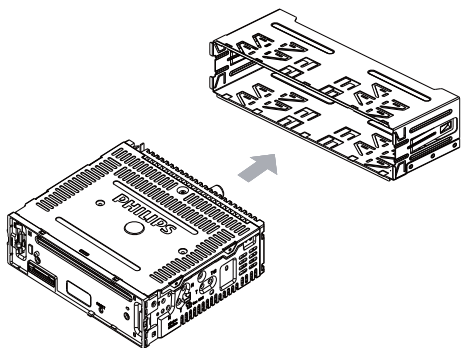
- 1** If the car does not have an on-board drive or navigation computer, disconnect the negative terminal of the car battery.
- If you disconnect the car battery in a car that has an on-board drive or navigation computer, the computer may lose its memory.
 - If the car battery is not disconnected, to avoid short-circuit, ensure that the bare wires do not touch each other.
- 2** Ensure that car dashboard opening is within these measurements:



- 3** Remove the two screws on the top of the unit.



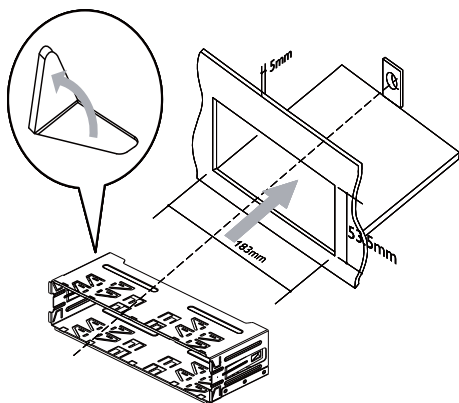
- 4** Remove the mounting sleeve with the supplied disassembly tools.



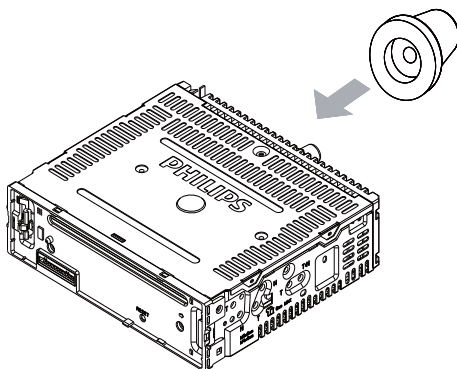
- 5** Install the sleeve into the dashboard and bend the tabs outward to fix the sleeve.

Note

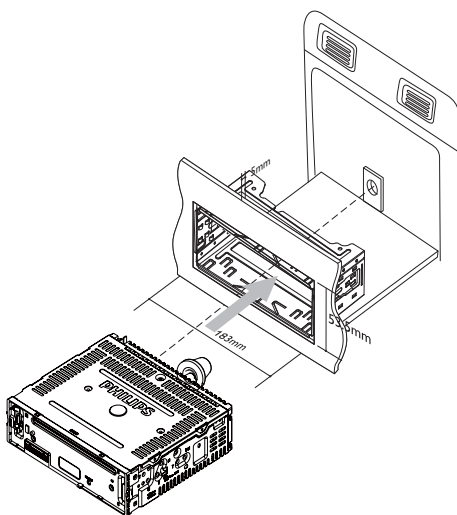
- If the unit is not fixed by sleeve but by the supplied screws, skip this step.



- 6** Place the supplied rubber cushion over the end of the mounting bolt.



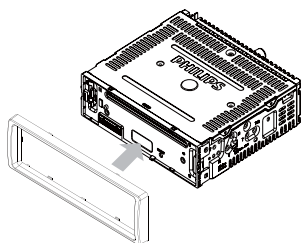
- 7** Slide the unit into the dashboard until you hear a click sound.



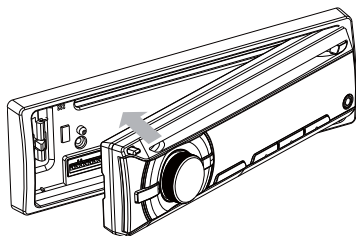
- 8** Reconnect the negative terminal of the car battery.

Attach the front panel

- 1 Attach the trim plate.



- 2 Insert the right side of the panel in the chassis until it is correctly engaged.
- 3 Press the left side of the panel until the mechanism locks it into place.



Install remote control battery

! Caution

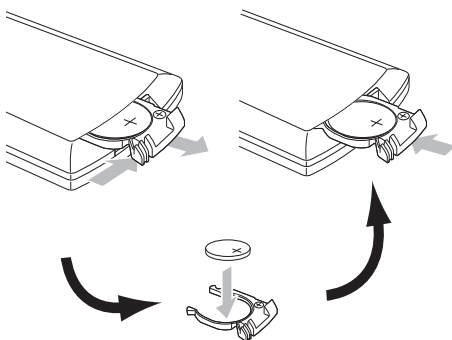
- Risk of explosion! Keep batteries away from heat, sunshine or fire. Never discard batteries in fire.
- Risk of decreased battery life! Never mix different brands or types of batteries.
- Risk of product damage! When the remote control is not used for long periods, remove the batteries.
- Perchlorate Material - special handling may apply. See www.dtsc.ca.gov/hazardouswaste/perchlorate.

For first-time use:

- 1 Remove the protective tab to activate the remote control battery.

To replace the remote control battery:

- 1 Open the battery compartment.
- 2 Insert one CR2025 battery with correct polarity (+/-) as indicated.
- 3 Close the battery compartment.



Turn on

- 1 Press **⏻** to turn on the unit.
 - To turn off the unit, press **⏻** for over 3 seconds.

Set clock

- 1 Press **MENU**.
- 2 Press **▲** or **▼** repeatedly until current time is displayed.
- 3 Rotate **⌚** clockwise to set hour.
- 4 Press **⏻** to confirm.
- 5 Rotate **⌚** anti-clockwise to set minute.
- 6 Press **⏻** to confirm.

View clock

- 1 Press and hold **OPTIONS** repeatedly until the clock is displayed.

4 Listen to radio

Tune to a radio station

- 1 Press **SOURCE** repeatedly to select Tuner.
- 2 Press **▲** or **▼** to select band: **[FM1]**, **[FM2]**, **[FM3]**, **[AM1]**, or **[AM2]**.
- 3 Press **◀◀** or **▶▶** to tune to a radio station manually.
 - ↳ The radio station is broadcast.
 - ↳ To search for a radio station automatically, press **◀◀** or **▶▶** for over 3 seconds.

Select tuner region

You can select suitable country/region of the radio.

- 1 Press **SOURCE** to select radio mode.
- 2 Press **MENU** repeatedly to select region.
- 3 Rotate **⦿** to select:
 - **[Europe]** (Western Europe)
 - **[USA]** (United States)
 - **[LATIN]** (Latin America)
 - **[OIRT]** (Russia)

Select tuner sensitivity

To receive more radio stations or only stations with strong signal, you can adjust the tuner sensitivity.

- 1 Press **OPTIONS** repeatedly until **[LOCAL]** or **[DX]** is displayed.
- 2 Rotate **⦿** to select a setting:
 - **[LOCAL SEEK ON]**: Only stations with strong signal can be broadcast.
 - **[LOCAL SEEK OFF]**: Stations with strong and weak signals can be broadcast.

Store radio stations in memory

You can store up to 6 stations in each band.

Store stations automatically

- 1 Press **OPTIONS** repeatedly until **AUTO-SCAN** is displayed, then press **⦿** to confirm.
 - ↳ The six strongest stations of the selected band are saved in preset channel automatically: FM1, FM2, FM3 1-6, AM1, AM2.

Store stations manually

- 1 Tune to a station that you want to store. (see 'Tune to a radio station')
- 2 Press and hold **+ / PRESET** or **- / RRESET** to enter storing mode.
 - ↳ The preset number on LCD screen blinks.
- 3 Press **+ / PRESET** or **- / RRESET** to select storing location.
- 4 Press **⦿** to confirm.
 - ↳ The station is saved in the selected channel.
 - ↳ The preset number on LCD screen lights up and remains on.

Tune to a preset station

- 1 Press **▲** or **▼** to select band.
- 2 Press **+ / PRESET** or **- / RRESET** to select the preset station.

5 Play with RDS

The RDS (Radio Data System) function operates only in areas with FM stations broadcasting RDS signals. If you tune to an RDS station, an RDS icon and information about the presenter, station or program is displayed.

Turn on RDS



Note

- The default setting for RDS is off.

- 1 Press **MENU** for 3 seconds.
- 2 Rotate **⌵** to select **RDS ON**:
↳ The RDS function is turned on.

Select program type

Before tuning to RDS stations, you can select program type and let the unit search only for programs of the selected category.

- 1 Press **OPTIONS** until **[PTY SCH]** is displayed.
- 2 Turn **⌵** to select a type, then press **⌵** to confirm.

Item	Program type	Description
1	NEWS	News services
2	AFFAIRS	Politics and current affairs
3	INFO	Special information programs
4	SPORT	Sports
5	EDUCATE	Education and advanced training

6	DRAMA	Radio plays and literature
7	CULTURE	Culture, religion and society
8	SCIENCE	Science
9	VARIED	Entertainment programs
10	POP M	Pop music
11	ROCK M	Rock music
12	EASY M	Light music
13	LIGHT M	Light classical music
14	CLASSICS	Classical music
15	OTHER M	Special music programs
16	WEATHER	Weather
17	FINANCE	Finance
18	CHILDREN	Children's programs
19	SOCIAL	Social Affairs
20	RELIGION	Religion
21	PHONE IN	Phone In
22	TRAVEL	Travel
23	LEISURE	Leisure
24	JAZZ	Jazz Music
25	COUNTRY	Country Music
26	NATION M	National Music
27	OLDIES	Oldies Music
28	FOLK M	Folk Music
29	DOCUMENT	Documentary
30	TEST	Alarm Test
31	ALARM	Alarm

Select alternate frequencies

If the radio signal is poor, turn on AF (Alternate Frequency) to search for another station with stronger signal.

- 1 Press **MENU** or **OPTIONS**.
- 2 Press **▲** or **▼** repeatedly until **[AF]** is displayed.

- 3 Rotate \odot to select a setting:
 - **[AF ON]**: Turn on the AF mode.
 - **[AF OFF]**: Turn off the AF mode.

Set region for AF tuning

You can define AF tuning region:

[REG ON]	Only stations in current region can be tuned to automatically.
[REG OFF]	All stations can be tuned to automatically.

- 1 Press **MENU**.
- 2 Press \blacktriangle or \blacktriangledown repeatedly until **[REG]** (Regional Radio) is displayed.
- 3 Rotate \odot to select a setting.

Receive traffic announcement

If you do not want to miss traffic announcement when enjoying music, turn on the TA (Traffic Announcement) function.

- 1 Press **MENU** or **OPTIONS**.
- 2 Press \blacktriangle or \blacktriangledown repeatedly until **[TA]** is displayed.
- 3 Rotate \odot to select a setting:
 - **[TA ON]**: When there is traffic announcement, the unit switches to the tuner mode (regardless of the current mode) and begins to broadcast the traffic conditions. When the traffic announcement is over, it returns to the previous mode.
 - **[TA OFF]**: Traffic announcement does not cut in.

Set RDS clock

You can use time signal that is broadcast together with the RDS signal to set the clock of the unit automatically.

- 1 Press **MENU**.
- 2 Press \blacktriangle or \blacktriangledown repeatedly until **[CT]** is displayed.
- 3 Rotate \odot to select a setting:
 - **[CT ON]**: Turn on the RDS clock. Time shown on the unit synchronizes with that on the RDS station.
 - **[CT OFF]**: Turn off the RDS clock.



Tip

- The accuracy of the transmitted time depends on the RDS station that transmits the time signal.

6 Play audio files



Note

- Ensure that the disc or device contains playable files.

Play a disc



Note

- You cannot play CDs encoded with copyright protection technologies.

You can play commercially available audio CDs and these discs:

- CD-Recordables (CD-R)
- CD-Re-writables (CD-RW)
- MP3 CDs
- WMA CDs



Note

- Ensure that the disc contains playable content.

- 1 Insert a CD with the printed side facing up.
 - ↳ Play starts automatically.
- To pause CD play, press **⏏**.
- To resume CD play, press **⏏** again.
- To skip to the previous/next track, press **⏮** or **⏭**.
- To search backward/forward rapidly within the current track, press **⏮** or **⏭** for over 3 seconds.

Remove the CD

To take out the CD, press **⏏** on the front panel.



Tip

- If the disc is blocked in the disc compartment, press and hold **⏏** until the disc comes out.

Search for an MP3/WMA track

Search within the current folder

- 1 Press **+SONG**.
 - ↳ The name of the current track is displayed.
- 2 Turn **⏏** to select another track in current folder
- 3 Press **⏏** to confirm.

Search in other folder

- 1 Press **FOLDER -**.
 - ↳ The name of the current folder is displayed.
- 2 Rotate **⏏** to navigate through all folders.
- 3 Press **⏏** to access the selected folder.
- 4 Rotate **⏏** to select a track in the folder.
- 5 Press **⏏** to start play.



Tip

- To go back to upper level of a folder, press **⏮**.

View play information

- 1 When playing, press **DISP** repeatedly to view:
 - Track number and elapsed play time
 - Artist
 - Album
 - Title
 - Folder
 - File

Repeat play

- 1 During play, press **OPTIONS** repeatedly until **[REP]** is displayed.
- 2 Rotate **⌚** to select a setting.
 - **[RPT TRK]** (repeat one track): play current track repeatedly.
 - **[RPT DIR]** (repeat a folder): play all tracks in the current folder repeatedly.
 - **[RPT ALL]** (repeat all tracks): play all tracks repeatedly.

Shuffle play

You can play the tracks in random order:

- 1 During play, press **OPTIONS** repeatedly until **[SHUF]** is displayed.
- 2 Rotate **⌚** to select a setting:
 - **[SHUF ON]**: start shuffle play for all tracks.
 - **[SHUF OFF]**: cancel shuffle play.

Intro play

You can play the first 10 seconds of each track.


- 1 During play, press **OPTIONS** repeatedly until **[INT]** is displayed:
- 2 Rotate **⌚** to select a setting:
 - **[INT ON]** : After the first 10 seconds of each track have been played, play stops.
 - **[INT OFF]** : Cancel intro play and start normal play.

Connect external sound source

- 1 Connect the external sound source to **MP3 LINK** socket with a 3.5 mm cable.
- 2 Press **SOURCE** repeatedly until **[MP3 LINK]** is displayed.
- 3 Operate the external component (refer to the instructions supplied with the external component).



7 Adjust sound

Adjust volume

- 1 Turn  clockwise/anticlockwise to increase/decrease volume.

Mute

You can turn off the sound of your audio.

- 1 During play, press .
 - To resume sound, press  again.

Turn Dynamic Bass Boost (DBB) on/off




- 1 Press **DBB** and the current setting is displayed:
 - ↳ **[DBB ON]** :The Dynamic Bass Boost (DBB) function is on.
 - ↳ **[DBB OFF]** :The DBB function is off.
- 2 Press **DBB** again to change the DBB setting.

Select preset equalizer

- 1 Press **EQ/Audio**.
 - ↳ Current Equalizer setting is displayed.
- 2 Press **EQ/Audio** again to select a preset EQ setting:
 - **[OPTIMAL]** (optimal)
 - **[FLAT]** (flat)
 - **[POP]** (pop)
 - **[USER]** (user)
 - **[TECHNO]** (techno)
 - **[ROCK]** (rock)
 - **[CLASSIC]** (classic)
 - **[JAZZ]** (jazz)

Other sound settings

You can also adjust the preset **EQ/Audio** settings.

- 1 Press **EQ/Audio** for over 3 seconds.
- 2 Press  or  repeatedly to select the item to be adjusted:
 - **[BAS]** (bass) range: -7 to +7.
 - **[TRE]** (treble) range: -7 to +7.
 - **[BAL]** (balance) range: 12L to 12R. (L = left speaker, R = right speaker)
 - **[FAD]** (fader) range: 12R to 12F. (R = rear speaker, F = front speaker)
- 3 Rotate  to select a value.

8 Adjust system settings

Select anti-shock setting

You can select anti-shock setting according to the stability of your car and the condition of the road.

- 1 Press **MENU**.
- 2 Press **▲** or **▼** repeatedly until **[ESP]** is displayed.
- 3 Turn **⊙** to select a setting:
 - **[ESP 10S]**: when the road is smooth and there are few bumps.
 - **[ESP 40S]**: when the road is bumpy and unstable.
- 4 Press **⊙** to confirm.

Turn beep sound on/off

Each time you press a button, the unit beeps. You can turn off/on this beep sound.

- 1 Press **MENU**.
- 2 Press **▲** or **▼** repeatedly until **[BEEP]** is displayed.
- 3 Rotate **⊙** to select a setting:
 - **[BEEP ON]**: Turn on the beep sound.
 - **[BEEP OFF]**: Turn off the beep sound.

Select blackout setting

You can set the screen to turn off automatically after the unit is idle for 10 or 20 seconds.

- 1 Press **MENU**.
- 2 Rotate **⊙** to select a setting:
 - **[BKO 10 S]**: Turn off the screen automatically 10 seconds after last operation.
 - **[BKO 20 S]**: Turn off the screen automatically 20 seconds after last operation.
 - **[BKO OFF]**: Never turn off the screen.
- 3 Press **⊙** to confirm.

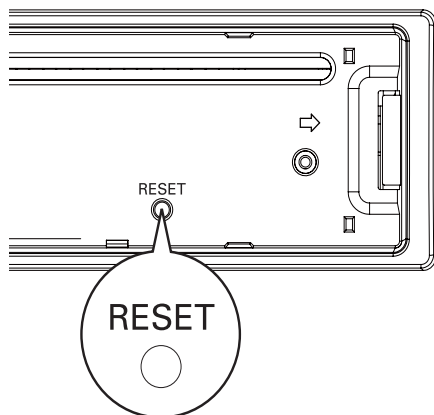
Turn demo mode on/off

- 1 Press **MENU**.
- 2 Press **▲** or **▼** repeatedly until **[DEMO]** is displayed.
 - ↳ The screen shows current Demo mode setting.
- 3 Rotate **⊙** to select a setting:
 - **[DEMO ON]**: Turn on the demo mode. When the unit is idle for more than 10 seconds, all functions are displayed.
 - **[DEMO OFF]**: Turn off the demo mode.

Reset

You can reset the unit to its default setting.


- 1 Detach the front panel.
- 2 Press the reset button by using a ball-point pen or a similar tool.
 - ↳ Preset adjustments such as preset channels and sound adjustments are erased.

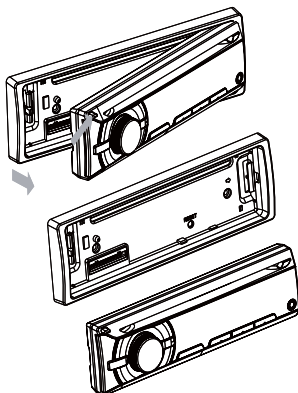


9 Additional information

Detach the front panel

You can detach the front panel to deter theft.

- 1 Press  to release the panel.
- 2 Push the left side of the panel rightward.

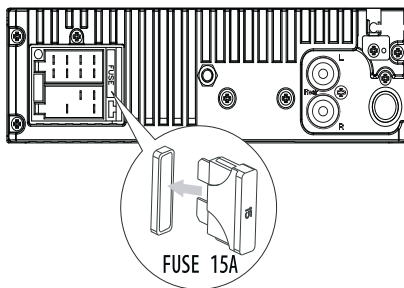


- 3 Pull the panel towards you to disengage it from the chassis.
- 4 Store the panel in the supplied carrying case to protect it from dirt or damage.

Replace fuse

If the fuse is damaged,

- 1 Check the electric connection.
- 2 Buy a fuse that matches the voltage of the damaged fuse.
- 3 Replace the fuse.



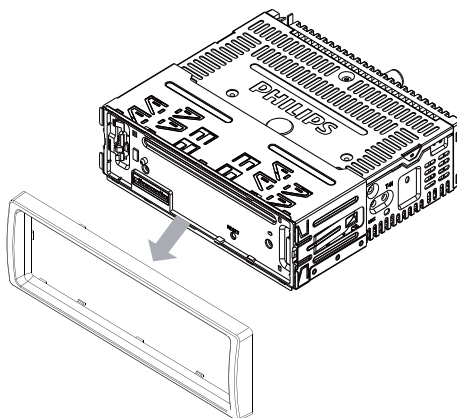
Note

- If the new fuse gets damaged again, there may be an internal malfunction. Consult your Philips dealer.

Remove the unit

You can remove the unit from the dashboard.

- 1 Detach the front panel.
- 2 Pull out the unit by using the disassembly tools.



10 Product information



Note

- Product information is subject to change without prior notice.

Power supply	12 V DC (11 V - 16 V), negative ground
Fuse	15 A
Suitable speaker impedance	4 - 8 Ω
Maximum power output	45 W \times 4 channels
Continuous power output	22 W \times 4 RMS (4 Ω 10% T.H.D.)
Pre-Amp output voltage	2.5V
Aux-in level	\geq 500 mV
Dimensions (W \times H \times D)	188 \times 58 \times 201 mm
Weight	1.47 kg

Radio

Frequency range - FM	87.5 - 108.0 MHz (100kHz per step in auto search and 50kHz per step in manual search)
Frequency range - AM(MW)	522 - 1620 KHz (9 kHz) 530 - 1710 kHz (10 kHz)
Usable sensitivity - FM	8 μ V
Usable sensitivity - AM(MW) (S/N = 20 dB)	30 μ V

Supported formats:

- MP3 bit rate (data rate): 32-320 Kbps and variable bit rate
- WMA V4, V7, V8, V9 (L1, L2)
- ISO9660, Joliet
- Maximum title number: 512 (depending on file name length)
- Maximum album number: 255
- Supported sampling frequencies: 2 kHz, 44.1 kHz, 48 kHz
- Supported Bit-rates: 2~256 (kbps), variable bit rates
- Directory nesting up to a maximum of 8 levels
- Number of albums/ folders: CD maximum 99
- Number of tracks/titles: maximum 999
- ID3 tag v2.0 or later
- File name in Unicode UTF8 (maximum length 64 bytes)

Unsupported formats:

- Empty albums: an empty album is an album that does not contain MP3/WMA files, and is not be shown in the display.
- Unsupported file formats are skipped. For example, Word documents (.doc) or MP3 files with extension .dlf are ignored and not played.
- AAC, WAV, PCM audio files
- DRM protected WMA files (.wav, .m4a, .m4p, .mp4, .aac)
- WMA files in Lossless format

11 Troubleshooting



Caution

- Never remove the casing of this apparatus.

To keep the warranty valid, never try to repair the system yourself.

If you encounter problems when using this apparatus, check the following points before requesting service. If the problem remains unsolved, go to the Philips web site (www.philips.com/support). When you contact Philips, ensure that your apparatus is nearby and the model number and serial number are available.

No power or no sound.

- Car engine is not on. Turn the car engine on.
- Cable is not correctly connected. Check connections.
- Fuse is burnt. Replace fuse.
- Volume is too low. Adjust volume.
- If the above solutions cannot help, press the RESET button.
- Ensure that the track played is of a compatible format.

Noise in broadcasts.

- Signals are too weak. Select other stations with stronger signals.
- Check the connection of the car antenna.
- Change broadcast from Stereo to mono.

Cannot play disc

- Ensure that the disc label is inserted with the printed side facing up.
- Wipe the disc with fibre cleaning cloth from the centre to the edge in a straight line.
- This disc may be defective. Play another disc.
- Ensure that the CD is a finalised CD/CD-R/CD-RW.
- Ensure that the CD is not encoded with copyright protection technologies.

The CD skips tracks

- Ensure that the CD is not damaged or dirty.
- Ensure that random mode is deactivated.

Disc cannot be ejected

- Press and hold ▲.

Preset stations lost.

- Battery cable is not correctly connected. Connect the battery cable to the terminal that is always live.

12 Glossary

M

MP3

A file format with a sound data compression system. MP3 is the abbreviation of Motion Picture Experts Group 1 (or MPEG-1) Audio Layer 3. With the MP3 format, one CD-R or CD-RW can contain about 10 times more data than a regular CD.

W

WMA (Windows Media Audio)

An audio format owned by Microsoft, is a part of Microsoft Windows Media technology. Includes Microsoft Digital Rights Management tools, Windows Media Video encoding technology, and Windows Media Audio encoding technology.

部件名称 Name of the Parts	有毒有害物质或元素 Hazardous/toxic Substance					
	铅 (Pb, Lead)	汞 (Hg, Mercury)	镉 (Cd, cadmium)	六价铬(Chromium 6+)	多溴联苯 (PBB)	多溴二苯醚 (PBDE)
Housing 外壳	O	O	O	O	O	O
DVD/CD loader DVD/CD 光盒	X	O	O	O	O	O
LCD Panel 液晶面板	X	X	O	O	O	O
PWBs 电路板组件	X	O	O	O	O	O
Accessories (Remote control & cables) 附件 (遥控器, 电 源线, 连接线)	X	O	O	O	O	O
Batteries in Remote Control (ZnC) 遥控器电池	X	O	O	O	O	O

O: 表示该有毒有害物质在该部件所有均质材料中的含量均在SJ/T11363 - 2006 标准规定的限量要求以下。
 O: Indicates that this toxic or hazardous substance contained in all of the homogeneous materials for this part is below the limit requirement in SJ/T11363 – 2006.

×: 表示该有毒有害物质至少在该部件的某一均质材料中的含量超出SJ/T11363 – 2006 标准规定的限量要求。
 X: Indicates that this toxic or hazardous substance contained in at least one of the homogeneous materials used for this part is above the limit requirement in SJ/T11363 - 2006.



环保使用期限 Environmental Protection Use Period

This logo refers to the period (10 years)

电子信息产品中含有的有毒有害物质或元素在正常使用的条件下不会发生外泄或突变，电子信息产品用户使用该电子信息产品不会对环境造成严重污染或对其人身、财产造成严重 损害的期限。

This logo refers to the period (10 years) during which the toxic or hazardous substances or elements contained in electronic information products will not leak or mutate so that the use of these [substances or elements] will not result in any severe environmental pollution, any bodily injury or damage to any assets.



© 2010 Koninklijke Philips Electronics N.V.

All rights reserved.

Document order number: CEM2000_00_UM_V2.1

