



Always there to help you 始终如一地为您提供帮助

Register your product and get support at
在以下网址注册产品并获得支持
www.philips.com/support



ZH-CN 用户手册 EN Short User Manual

PHILIPS



Specifications are subject to change without notice.
2014 © WOOX Innovations Limited.All rights reserved.
Philips and the Philips' Shield Emblem are registered trademarks of Koninklijke Philips N.V.
and are used by WOOX Innovations Limited under license from Koninklijke Philips N.V.

DS8900_93_Short User Manual_V1.0

ZH-CN

注意事项

了解这些安全标志



此“闪电标志”表示设备中的未绝缘材料可能导致触电。为了您家中每个人的安全，请勿卸下产品外壳。
“惊叹号”表示需要对某些功能多加注意，您应仔细阅读附带的说明书以防止出现操作和维护问题。
警告：为减少火灾或触电危险，此设备应避免淋雨或受潮，不得将装有液体的物体（如花瓶）放在此设备上。
注意：为防止触电，请将插头的宽插片完全插入宽插槽。

- 不要靠近水的地方使用本装置。
- 不要堵塞任何通风口。按照制造商的说明进行安装。
- 不要在任何热源附近安装，如散热器、散热器、炉具或其它发热设备（包括功放器）。
- 仅使用制造商指定的附件/配件。
- 仅使用制造商指定或随设备销售的手推车、支座、三脚架、支架或桌台。使用手推车时，请小心移动载有产品的手推车，以避免翻倒造成伤害。
- 在雷电天气期间或长期不用的情况下，请拔下本装置的电源插头。
- 不可将电池置于高温环境，如阳光直射处、明火或类似环境。
 - 按照装置上标明的 + 极和 - 极，正确安装所有电池。
 - 请勿混合使用电池（旧电池与新电池或碳电池与碱性电池，等等）。
 - 若打算长期不用本装置，应取出电池。
- 所有维修均应由合格的维修人员来执行。本装置有任何损坏时，如电源线或插头损坏，液体泼溅到或物体跌落到装置上，装置淋雨或受潮，无法正常运行，或者跌落，均需要进行维修。
- 切勿将本装置置于漏水或溅水环境下。
- 不要将任何危险源放在本装置上（例如装有液体的物体、点燃的蜡烛）。
- 将电源插头或产品耦合器用作断开设备时，该断开设备应可以随时使用。



警告

- 切勿拆下本产品的外壳。
- 切勿润滑本装置的任何部件。
- 切勿将本装置放在其它电器设备上面。
- 应让本装置远离阳光直射、明火或高温。
- 确保始终可轻易地接触到电源线、电源插头或适配器，以便于将本装置从电源上断开。

听力安全

以中等音量收听。

- 以高音量使用耳机会损坏您的听力。此产品产生的声音分贝范围可能导致正常人丧失听力，即使收听不到一分钟。较高的分贝范围适用于已经丧失了部分听力的人。
- 声音是具有欺骗性的。随着时间的过去，您听力的“舒适级别”会要求较高的音量。因此，较长时间的收听之后，“正常”的音量实际上可能很大声，对您的听力有害。要防止此情况发生，请在您的听力适应之前，将音量设置到安全级别并保持不变。

要设置安全的音量级别：

- 将音量控制设置为较低设置。
- 慢慢调高声音，直到可以舒适、清晰地听见而不失真即可。

合理的收听时间：

- 较长时间的收听，即使是正常的“安全”级别，也同样会导致听力受损。
- 请确保合理使用设备，并进行适当的休息。

使用耳机时请确保遵循以下准则。

- 在合理时间内以合理音量收听。
- 听力适应后，请勿调节音量。
- 不要将音量调得太高，以致于听不到周围的声音。
- 在有潜在危险的情况下应谨慎使用或暂停使用。请勿在驾驶机动车、骑自行车、进行滑板运动等情况下使用耳机；否则可能会造成交通事故，而且这在许多地区属于非法行为。

注意

如果用户未经 WOOX Innovations 的明确许可而擅自对此设备进行更改或修改，则可能导致其无权操作此设备。
弃置旧产品
本产品采用可回收利用的高性能材料和组件制造而成。
弃置产品时，请不要将其与一般生活垃圾一同丢弃，应将其交给政府指定的回收中心或回收。这样做有利于环保。



环境信息

为使包装尽量简化，已省去所有不必要的包装材料。包装材料分为三类：纸板（盒）、纸浆（缓冲物）和聚乙烯（袋、保护膜）。本系统的所有材料均可回收和再利用（如果由专业公司拆卸）。请遵守当地有关包装材料、废电池和旧设备的处理的规定。

蓝牙® 词汇和标识均为 Bluetooth SIG, Inc. 所有，Philips 对这些词汇和标识的任何使用均属合法。

“Made for iPod”、“Made for iPhone”和“Made for iPad”表示电子附件专为连接 iPod、iPhone 或 iPad 而设计，并经开发人员认证，符合 Apple 性能标准。Apple 对该设备的操作及其是否符合安全和法规标准不负任何责任。请注意，通过 iPod、iPhone 或 iPad 使用该配件可能影响无线性能。
iPod 和 iPhone 是 Apple Inc. 在美国 和其它国家/地区注册的商标。iPad 是 Apple Inc. 的商标。



注

- 型号铭牌位于控制面板下的电池仓附近。

EN

Important

Know these safety symbols



This 'bolt of lightning' indicates uninsulated material within your unit may cause an electric shock. For the safety of everyone in your household, please do not remove product covering.
The 'exclamation mark' calls attention to features for which you should read the enclosed literature closely to prevent operating and maintenance problems.
WARNING: To reduce the risk of fire or electric shock, this apparatus should not be exposed to rain or moisture and objects filled with liquids, such as vases, should not be placed on this apparatus.
CAUTION: To prevent electric shock, fully insert the plug. (For regions with polarized plugs: To prevent electric shock, match wide blade to wide slot.)

- Do not use this apparatus near water.
- Do not block any ventilation openings. Install in accordance with the manufacturer's instructions.
- Do not install near any heat sources such as radiators, heat registers, stoves, or other apparatus (including amplifiers) that produce heat.
- Only use attachments/accessories specified by the manufacturer.
- Use only with the cart, stand, tripod, bracket, or table specified by the manufacturer or sold with the apparatus. When a cart is used, use caution when moving the cart/apparatus combination to avoid injury from tip-over.
- Unplug this apparatus during lightning storms or when unused for long periods of time.
- Batteries shall not be exposed to excessive heat such as sunshine, fire or the like.
 - Install all batteries correctly, + and - as marked on the unit.
 - Remove batteries when the unit is not used for a long time.
 - Do not mix batteries (old and new or carbon and alkaline, etc.).
- Refer all servicing to qualified service personnel. Servicing is required when the apparatus has been damaged in any way such as power-supply cord or plug is damaged, liquid has been spilled or objects have fallen into the apparatus, the apparatus has been exposed to rain or moisture, does not operate normally, or has been dropped.
- Apparatus shall not be exposed to dripping or splashing.
- Do not place any sources of danger on the apparatus (e.g. liquid filled objects, lighted candles).
- Where the mains plug or an appliance coupler is used as the disconnect device, the disconnect device shall remain readily operable.



Warning

- Never remove the casing of this apparatus.
- Never lubricate any part of this apparatus.
- Never place this apparatus on other electrical equipment.
- Keep this apparatus away from direct sunlight, naked flames or heat.
- Make sure that you always have easy access to the power cord, plug or adaptor to disconnect the apparatus from the power.

Hearing safety

Listen at a moderate volume.

- Using headphones at a high volume can impair your hearing. This product can produce sounds in decibel ranges that may cause hearing loss for a normal person, even for exposure less than a minute. The higher decibel ranges are offered for those that may have already experienced some hearing loss.



- Sound can be deceiving. Over time your hearing 'comfort level' adapts to higher volumes of sound. So after prolonged listening, what sounds 'normal' can actually be loud and harmful to your hearing. To guard against this, set your volume to a safe level before your hearing adapts and leave it there.

To establish a safe volume level:

- Set your volume control at a low setting.
- Slowly increase the sound until you can hear it comfortably and clearly, without distortion.

Listen for reasonable periods of time:

- Prolonged exposure to sound, even at normally 'safe' levels, can also cause hearing loss.
- Be sure to use your equipment reasonably and take appropriate breaks.

Be sure to observe the following guidelines when using your headphones.

- Listen at reasonable volumes for reasonable periods of time.
- Be careful not to adjust the volume as your hearing adapts.
- Do not turn up the volume so high that you can't hear what's around you.
- You should use caution or temporarily discontinue use in potentially hazardous situations. Do not use headphones while operating a motorized vehicle, cycling, skateboarding, etc.; it may create a traffic hazard and is illegal in many areas.

Notice

Any changes or modifications made to this device that are not expressly approved by WOOX Innovations may void the user's authority to operate the equipment.

Disposal of your old product

Your product is designed and manufactured with high quality materials and components, which can be recycled and reused.
Do not throw away the product with the normal household waste at the end of its life, but hand it in at an official collection point or recycling. By doing this, you help to preserve the environment.



Environmental information

All unnecessary packaging has been omitted. We have tried to make the packaging easy to separate into three materials: cardboard (box), paper pulp (buffer) and polyethylene (bags, protective foam sheet.)
Your system consists of materials which can be recycled and reused if disassembled by a specialized company. Please observe the local regulations regarding the disposal of packaging materials, exhausted batteries and old equipment.

The Bluetooth® word mark and logos are registered trademarks owned by Bluetooth SIG, Inc. and any use of such marks by WOOX Innovations is under license.

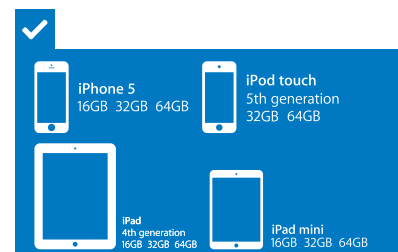
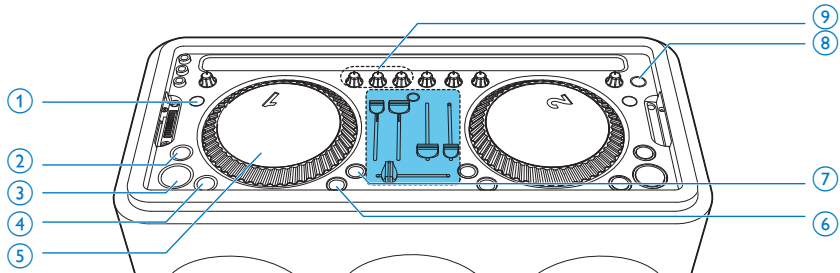


“Made for iPod,” “Made for iPhone,” and “Made for iPad” mean that an electronic accessory has been designed to connect specifically to iPod, iPhone, or iPad, respectively, and has been certified by the developer to meet Apple performance standards. Apple is not responsible for the operation of this device or its compliance with safety and regulatory standards. Please note that the use of this accessory with iPod, iPhone, or iPad may affect wireless performance.
iPod and iPhone are trademarks of Apple Inc., registered in the U.S. and other countries. iPad is a trademark of Apple Inc.



Note

- The type plate is located near the battery compartment under the control panel.



部件名称 Name of the Parts	有毒有害物质或元素 Hazardous/toxic Substance					
	铅 (Pb, Lead)	汞 (Hg, Mercury)	镉 (Cd, cadmium)	六价铬 (Chromium 6+)	多溴联苯 (PBB)	多溴二苯醚 (PBDE)
Housing 外壳	○	○	○	○	○	○
Loudspeakers 喇叭单元	○	○	○	○	○	○
PWBs 电路板组件	×	○	○	○	○	○
Accessories (cables) 附件 (电源线, 连接线)	×	○	○	○	○	○

○: 表示该有毒有害物质在该部件所有均质材料中的含量均在 SJ/T11363 - 2006 标准规定的限量要求以下。
○: Indicates that this toxic or hazardous substance contained in all of the homogeneous materials for this part is below the limit requirement in SJ/T11363 — 2006.

×: 表示该有毒有害物质至少在该部件的某一均质材料中的含量超出 SJ/T11363 — 2006 标准规定的限量要求。
X: Indicates that this toxic or hazardous substance contained in at least one of the homogeneous materials used for this part is above the limit requirement in SJ/T11363 - 2006.

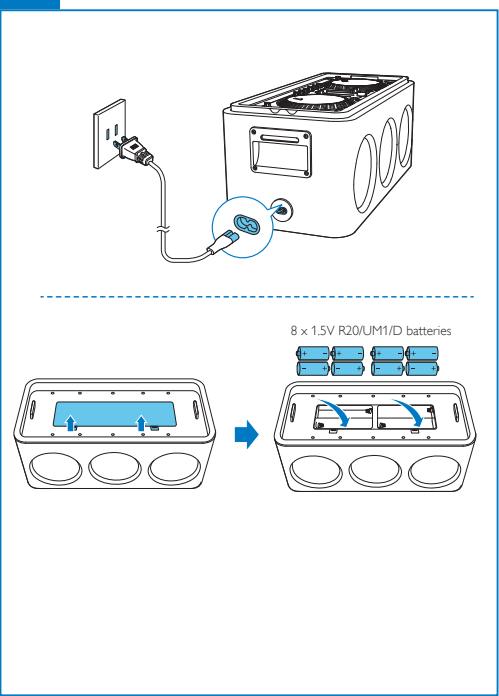
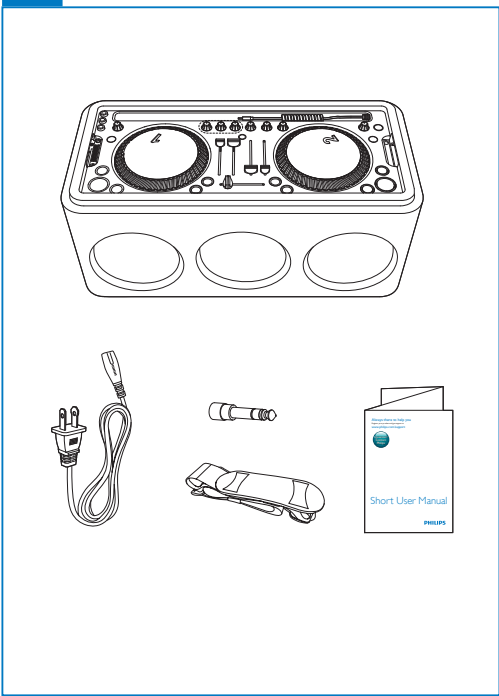


环保使用期限 Environmental Protection Use Period

This logo refers to the period (10 years)

电子信息产品中含有的有毒有害物质或元素在正常使用的条件下不会发生外泄或突变，电子信息产品用户使用该电子信息产品不会对环境造成严重污染或对其人身、财产造成严重 损害的期限。

This logo refers to the period (10 years) during which the toxic or hazardous substances or elements contained in electronic information products will not leak or mutate so that the use of these [substances or elements] will not result in any severe environmental pollution, any bodily injury or damage to any assets.



ZH-CN

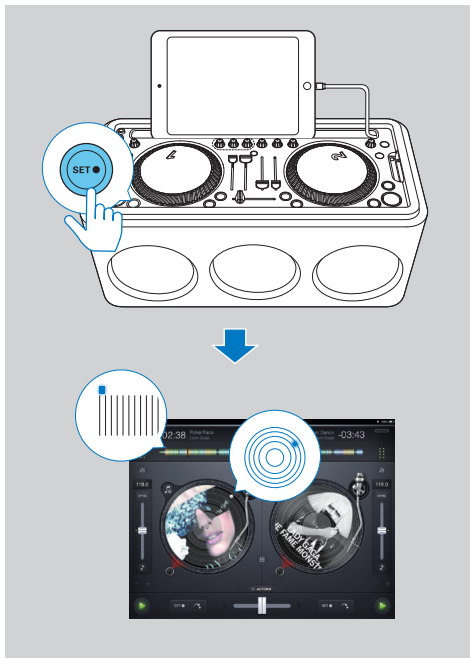
- 轻推转盘模式
- 从 CUE 点播放曲目
- 播放/暂停
- 设置 CUE 点
- 转盘
- 通过耳机监控曲目
- 将曲目的节奏与另一个唱盘上播放的曲目同步
- 开机/关机
- 调整低/中/高频
- 交叉渐变器
- 节奏
- 音量

EN

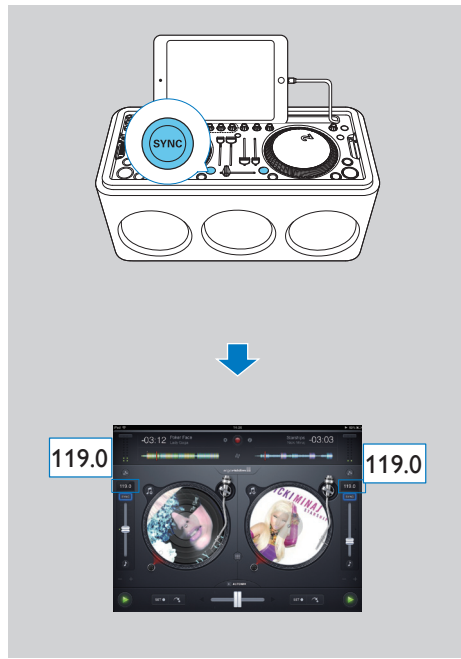
- Jog mode
- Play the track from the cue point
- Play/pause
- Set cue point
- Turntable
- Monitor the track through headphones
- Synchronize the tempo of the track with the one playing on the other turntable
- Turn on/off
- Adjust low/mid/high frequency
- Cross fader
- Tempo
- Volume



- ZH-CN**
- 1 下载 **djay 2** 应用程序。
 - 2 将 iPod/iPhone/iPad 连接至本产品。
 - 3 启动 **djay 2** 应用程序，加载曲目。
- EN**
- 1 Download the **djay 2** app.
 - 2 Connect your iPod/iPhone/iPad to the device.
 - 3 Launch the **djay 2** app and load tracks.



- ZH-CN**
- 设置CUE点**
- 1 选择起点。
 - 2 按 **[CUE]** 设置CUE点。
→ CUE点将在曲目的视觉波形上或 **djay 2** 中的转盘上显示为一个白点。
 - 3 按 **[CUE]** 从设置的CUE点播放曲目。
- 注意：按住 **[CUE]** 可清除CUE点。
- EN**
- Set cue point**
- 1 Select a start point.
 - 2 Press **[CUE]** to set the cue point.
→ The cue point is displayed as a white dot on the visual waveform of the track or on the turntable in djay 2.
 - 3 Press **[CUE]** to play the track from the set cue point.
- Note: Press and hold **[CUE]** to clear the cue point.



- ZH-CN**
- 同步节奏**
- 按 **[SYNC]** 可将曲目的节奏与另一转盘上播放的曲目同步。
- EN**
- Synchronize the tempo**
- Press **[SYNC]** to synchronize the tempo of the track with the track playing on the other turntable.

ZH-CN

轻推转盘模式

按 **[JOG MODE]** 可在搓碟模式和搜索模式之间切换。

EN

Jog mode

Press **[JOG MODE]** to switch between scratch mode and search mode.

ZH-CN	搓碟模式: 旋转转盘的内部区域可产生刮擦的声音。	轻触转盘的内部区域可暂停播放。	旋转转盘的外部区域可更改曲目的节奏。
EN	Scratch mode: Rotate the the inner area of the turntable to generate the scratch sound.	Touch the inner area of the turntable to pause the playback.	Rotate the outer area of the turntable to change the pitch of the track.

ZH-CN	搜索模式 旋转转盘可快进或快退曲目。
EN	Search mode Rotate the turntable to fast forward or backward the track.

ZH-CN

调整交叉渐变器

滑动交叉渐变器，可调整两个转盘上播放的曲目间的输出均衡。

EN

Adjust the cross fader

Slide the cross fader to adjust the output balance between the tracks playing on the two turntables.

ZH-CN

交叉渐变器滑至左侧时：
转盘 1 上播放的曲目将通过微型系统播放。
→ **[1]** 灯将亮起，转盘 2 上播放的曲目将通过耳机播放。

EN

When the cross fader is slid to the left:
The track on turntable 1 is played through the micro system.
→ The **[1]** lights and the track on turntable 2 is played through the headphones.

ZH-CN

交叉渐变器滑至右侧时：
转盘 2 上播放的曲目将通过微型系统播放。
→ **[2]** 灯将亮起，转盘 1 上播放的曲目将通过耳机播放。

EN

When the cross fader is slid to the right:
The track on turntable 2 is played through the micro system.
→ The **[2]** lights and the track on turntable 1 is played through the headphones.

ZH-CN

录制

按 **[REC]** 可录制混合曲目，再次按下可停止录制。
您可以通过轻击 **djay 2** 上的 **[REVIEW]**，检查录制的曲目。

EN

Record

Press **[REC]** to record the the mixed track, press again to stop recording.
You can check the recorded tracks by tapping **[REVIEW]** on djay 2.

ZH-CN

通过耳机监控曲目

EN

Monitor tracks through headphones

ZH-CN

按任一转盘的 **[MONITOR]**。
→ **[MONITOR]** 将亮起。
→ 您可以通过耳机监控此转盘上播放的曲目。

EN

Press **[MONITOR]** of either turntable.
→ The **[MONITOR]** lights.
→ You can monitor the track playing from this turntable through the headphones.

ZH-CN

蓝牙连接

- 1 用双手拉起顶部面板，然后将其翻转过来。
- 2 将 DJ 控件侧面朝下，然后将顶部面部完全插回以确保稳固。
- 3 按顶部面板上的 **[BT]**。
→ 蓝牙指示灯呈蓝色闪烁。
- 4 在与微型系统配对的设备上，启用蓝牙功能，然后开始搜索。
- 5 选择“M1X-DJ”进行配对，连接至微型系统。
→ 连接成功后，扬声器上的蓝牙指示灯变为蓝色并持续亮起。
- 6 在配对的设备上播放音乐。

EN

- 1 Pull up the top panel with both hands and flip it over.
- 2 With the DJ controller side facing downwards, fully insert the top panel back to ensure a secure fit.
- 3 Press **[BT]** on the top panel.
→ The Bluetooth indicator blinks blue.
- 4 On the device to be paired with the speaker system, enable Bluetooth function and start search.
- 5 Select “M1X-DJ” to pair and connect to the speaker system.
→ After successful connection, the Bluetooth indicator on the speaker turns solid blue.
- 6 Play music on the paired device.

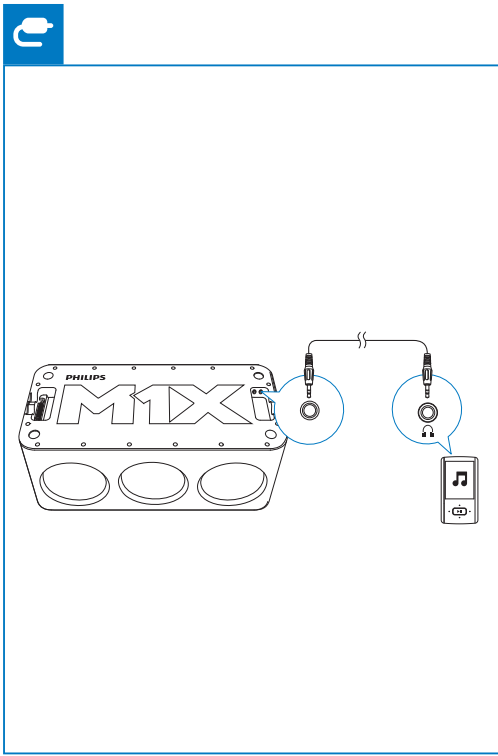
ZH-CN

通过 Lightning 接口连接

- 1 通过 Lightning 接口将 iPod/iPhone/iPad 和本产品建立连接。
- 2 播放 iPod/iPhone/iPad 中的音乐。

EN

- 1 Connect your iPod/iPhone/iPad with the device through the Lightning connector.
- 2 Play music on the iPod/iPhone/iPad.



ZH-CN

下载用户手册

要下载完整的用户手册，请登录 www.philips.com/support。

EN

To download the full user manual, visit www.philips.com/support.

ZH-CN

规格

放大器	
额定输出功率	60 瓦 RMS
频率响应	60 赫兹 - 16 千赫, ± 3dB
信噪比	> 65 dBA
音频输入连接	0.5 伏 RMS 20 千欧
扬声器	
扬声器阻抗	8 欧姆
扬声器驱动器	2 x 5.25 英寸全频
灵敏度	> 85 dB/m/W
蓝牙	
频段	2.4000 GHz - 2.4835 GHz ISM 频段
范围	8 米 (开阔空间)
标准	蓝牙 2.1 + EDR

一般信息

交流电源	100-240 伏, 50/60 赫兹
操作功耗	40 瓦
尺寸 - 主装置 (宽 x 高 x 厚)	380 x 186 x 227 毫米
重量 - 主装置	7.35 千克

EN

Specifications

Rated Output Power	60 W RMS
Frequency Response	60 Hz - 16 kHz, ±3 dB
Signal to Noise Ratio	> 65 dBA
Audio-in Link	0.5 V RMS 20 kohm

Speakers

Speaker Impedance	8 ohm
Speaker Driver	2 x 5.25 " full range
Sensitivity	> 85 dB/m/W

Bluetooth

Frequency band	2.4000 GHz - 2.4835 GHz ISM Band
Range	8 meters(free space)
Standard	Bluetooth 2.1 + EDR

General information

AC power	100-240V~, 50/60Hz
Operation Power	40W
Consumption	
Dimensions - Main Unit (W x H x D)	380 x 186 x 227mm
Weight - Main Unit	7.35 kg