



EN Quick Start Guide

ZH-CN 快速使用指南

AZ330T

PHILIPS



Specifications are subject to change without notice
2016 © Gibson Innovations Limited. All rights reserved.

This product has been manufactured by, and is sold under the responsibility of WOOX Innovations (Shanghai) Commercial Company Ltd., and WOOX Innovations (Shanghai) Commercial Company Ltd., is the warrantor in relation to this product. Philips and the Philips Shield Emblem are registered trademarks of Koninklijke Philips N.V. and are used under license.

AZ330T_93_QSG_V1.0



EN Before using your product, read all accompanying safety information.

ZH-CN 在使用产品之前，请先阅读所有随附的安全信息。

EN To play with the device, you can use either alkaline battery (R14) or AC power.

ZH-CN 若要使用本装置进行播放，您可使用碱性电池 (R14) 或 AC 电源。

EN CD/USB BT FM OFF

ZH-CN + VOLUME -

EN

- Switch the source selector to **BT**.
↳ The bluetooth indicator flashes blue.
- On your Bluetooth device, enable Bluetooth function and search for devices.
- Select **[Philips AZ330T]** on your device for pairing. If necessary, enter default password "0000".
↳ After successful pairing and connection, the product beeps twice, and the LED indicator turns solid blue.
- After successful Bluetooth connection, play audio on the Bluetooth device.

Note: Press and hold **PAIRING** for two seconds to disconnect the Bluetooth connection and enter pairing mode.

ZH-CN

- 将音源选择钮切换至 **BT**。
↳ 蓝牙指示灯会闪烁蓝色。
- 在您的蓝牙装置上，启用蓝牙功能搜索装置。
- 选择装置上的 **[Philips AZ330T]** 进行配对。按需要输入预设密码 "0000"。
↳ 成功配对与连接后，产品会发出两次哔声，且 LED 指示灯会持续亮蓝灯。
- 蓝牙连接成功后，在蓝牙装置上播放音频。

注：按住 **PAIRING** 两秒可中断蓝牙连接并进入配对模式。

EN

ZH-CN

EN	ZH-CN
	按下可跳至上一/下一曲目 按住可在播放中搜寻，放开即可恢复播放。
	开始或暂停播放。
	停止播放。
PROG	编排曲目。
+ VOLUME -	调整音量。
- ALBUM +	跳过上一张或下一张专辑。
MODE	选择播放模式。

- In CD/USB/BT mode, the CD sound machine switches to standby mode automatically if there is no audio signal detected for over 15 minutes.
- Press **▶||** to wake up your CD sound machine from standby mode.

EN	ZH-CN
	按下可跳至上一/下一曲目 按住可在播放中搜寻，放开即可恢复播放。
	开始或暂停播放。
	停止播放。
PROG	编排曲目。
+ VOLUME -	调整音量。
- ALBUM +	跳过上一张或下一张专辑。
MODE	选择播放模式。

- 在 CD/USB/BT 模式下，若 CD 音响超过 15 分钟未检测到任何音频信号，即会自动切换至待机模式。
- 按下 **▶||** 即可唤醒处于待机模式中的 CD 音响。

EN The USB input (as a music source) is meant for data transfer, not for battery charging purpose.

ZH-CN 该USB 接口仅用于数据传输，不具充电功能。

EN Program tracks

ZH-CN 编排曲目

EN

Safety

- Read these instructions.
- Follow all instructions.
- Do not block any ventilation openings. Install in accordance with the manufacturer's instructions.
- Do not install near any heat sources such as radiators, heat registers, stoves, or other apparatus (including amplifiers) that produce heat.
- Protect the power cord from being walked on or pinched, particularly at plugs, convenience receptacles, and the point where they exit from the unit.
- Only use attachments/accessories specified by the manufacturer.
- Unplug this unit during lightning storms or when unused for long periods of time.
- Refer all servicing to qualified service personnel. Servicing is required when the unit has been damaged in any way, such as power-supply cord or plug is damaged, liquid has been spilled or objects have fallen into the apparatus, the unit has been exposed to rain or moisture, does not operate normally, or has been dropped.
- Battery usage CAUTION – To prevent battery leakage which may result in bodily injury, property damage, or damage to the unit:
 - Install all batteries correctly, + and - as marked on the unit.
 - Do not mix batteries (old and new or carbon and alkaline, etc.).
 - Remove batteries when the unit is not used for a long time.
- Batteries (battery pack or batteries installed) shall not be exposed to excessive heat such as sunshine, fire or the like.
- CAUTION: Danger of explosion if battery is incorrectly replaced. Replace only with the same or equivalent type.
- The unit shall not be exposed to dripping or splashing.
- Do not place any sources of danger on the unit (e.g. liquid filled objects, lighted candles).
- Where the MAINS plug or an appliance coupler is used as the disconnect device, the disconnect device shall remain readily operable.

Warning

- Never remove the casing of this apparatus.
- Never place this apparatus on other electrical equipment.
- Never look into the laser beam inside this apparatus.

Caution

- Use of controls or adjustments or performance of procedures other than herein may result in hazardous radiation exposure or other unsafe operation.

Notice

Any changes or modifications made to this device that are not expressly approved by

Gibson Innovations may void the user's authority to operate the equipment.

Care of the environment

Disposal of your old product



Your product is designed and manufactured with high quality materials and components, which can be recycled and reused. Do not throw away the product with the normal household waste at the end of its life, but hand it in at an official collection point or recycling. By doing this, you help to preserve the environment.

Environmental information

All unnecessary packaging has been omitted. We have tried to make the packaging easy to separate into three materials: cardboard (box), paper pulp (buffer) and polyethylene (bags, protective foam sheet.)

Your system consists of materials which can be recycled and reused if disassembled by a specialized company. Please observe the local regulations regarding the disposal of packaging materials, exhausted batteries and old equipment.

Trademark notice

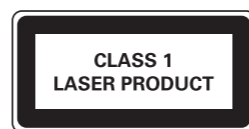


The USB-IF Logos are trademarks of Universal Serial Bus Implementers Forum, Inc.

Bluetooth

The Bluetooth® word mark and logos are registered trademarks owned by Bluetooth SIG, Inc. and any use of such marks by Gibson Innovations is under license.

This apparatus includes these labels:



Class II equipment symbol



This symbol indicates that the apparatus has a double insulation system.

Note

- The type plate is located on the bottom of the apparatus.

Specifications

Rated output power (Amplifier): 2 X 2W RMS≤10% THD
Acoustic frequency response: 125 Hz - 16K Hz
Speaker driver: 2 x 3", 4Ω
Support disc type: CD-DA, CD-R, CDRW, MP3-CD (8/12 cm)
Bluetooth version: V3.0 +EDR
Bluetooth supported profiles: HFPV1.6, A2DP V1.2, AVRCPV1.4

Bluetooth frequency band / Output power: 2.400GHz ~ 2.483GHz ISM Band / ≤ 4dBm (Class 2)
USB (for playback): Type A, USB Direct 2.0, 5V / 500mA, MSC file format, FAT 16/32
MP3, 32-320 Kbps and Variable bit rate
Tuner frequency range: FM 87.5-108MHz
AUX input level: 650mV RMS
Battery: C size Cell x 6
Power: AC Input: 220V~ 50 Hz
Operation power consumption: 15W
Play time in battery mode: Approx. 8 hours, CD-mode, Alkaline batteries (when playing music in CD mode @ 76dBa SPL)
ECO standby power consumption: < 0.5W
Product dimensions (W x H x D): Main unit 290 x 130 x 240 mm
Product weight: Main unit 1.26kg

ZH-CN

安全事项

- 阅读这些说明。
- 遵循所有说明。
- 不要堵塞任何通风口。按照制造商的说明进行安装。
- 不要在任何热源附近安装，如散热器、蓄热器、炉具或其它发热设备（包括功放器）。
- 防止电源线被踩踏或挤夹，特别是在插头、电源插座和装置电源线出口位置。
- 仅使用制造商指定的附件/配件。
- 在雷电天气期间或长期不用的情况下，请拔下本装置的电源插头。
- 所有维修应由合格的维修人员来执行。本装置有任何损坏时，如电源线或插头损坏，液体泼溅到或物体跌落到装置上，装置淋雨或受潮，无法正常运行，或者跌落，均需要进行维修。
- 电池使用注意事项 – 为防止电池泄漏而造成人身伤害、财产损失或装置损坏，请：
 - 按照装置上标明的 + 极和 - 极，正确安装所有电池。
 - 请勿混合使用电池（旧电池与新电池或碳电池与碱性电池，等等）。
 - 若打算长期不用本装置，应取出电池。
- 不可将电池（电池组或安装的电池）置于高温环境，如阳光直射处、明火或类似环境。
- 切勿将装置暴露在漏水或溅水环境下。
- 不要将任何危险源放在本装置上（例如装有液体的物体、点燃的蜡烛）。
- 将电源插头或产品耦合器用作断开设备时，该断开设备应可以随时使用。

警告

- 切勿拆下本产品的外壳。
- 切勿将本装置放在其它电器设备上。
- 切勿直视本装置内部的激光束。

注意

- 不按此处说明的操作流程来使用控件或进行调整可能导致危险的激光辐射或其它不安全的操作。

注意

如果用户未经 Gibson Innovations 的明确许可而擅自对此设备进行更改或修改，则可能导致其无权操作此设备。

保护环境

弃置旧产品



本产品采用可回收利用的高性能材料和组件制造而成。弃置产品时，请不要将其与一般生活垃圾一同丢弃，应将其交给政府指定的回收中心或回收。这样做有利于环保。

环境信息

为使包装尽量简化，已省去所有不必要的包装材料。包装材料分为三类：纸板（盒）、纸浆（缓冲物）和聚乙烯（袋、保护膜）。本系统的所有材料均可回收和再利用（如果由专业公司拆卸）。请遵守当地有关包装材料、废电池和旧设备的处理的规定。



USB-IF 标志为 Universal Serial Bus Implementers Forum, Inc. 的商标。

Bluetooth

Bluetooth®文字标记及标志为 Bluetooth SIG, Inc. 的注册商标，Gibson Innovations 对这些标记的使用均已获得授权。

本装置具有以下标签：



产品中有害物质的名称及含量 Names and Contents of Hazardous Substances

部件名称 Name of the Parts	有害物质 Hazardous Substances				
	铅 (Pb, Lead)	汞 (Hg, Mercury)	镉 (Cd, cadmium)	六价铬 (Chromium (VI))	多溴联苯 (PBDE)
Housing 外壳	○	○	○	○	○
Loudspeakers 喇叭单元	○	○	○	○	○
PWBs 电路板组件	○	○	○	○	○
Accessories (Cables) 附件 (电源线, 连接线)	○	○	○	○	○

本表格依据SJ/T 11364的规定编制。
The table is compiled according to SJ/T 11364.

○：表示该有害物质在该部件所有均质材料中的含量均在GB/T 26572 标准规定的限量要求以下。
○：Indicates that this hazardous substance contained in all of the homogeneous materials for this part is below the limit requirement in GB/T 26572.

×：表示该有害物质至少在该部件的某一均质材料中的含量超出GB/T 26572 标准规定的限量要求。
X: Indicates that this hazardous substance contained in at least one of the homogeneous materials used for this part is above the limit requirement in GB/T 26572.



环保使用期限 Environmental Protection Use Period
这标志表示的期间（10年）是电子产品中有害物质在正常使用条件下不会发生外泄或突变，电子产品用户使用该电子产品不会对环境污染或对人体、财产造成严重损害。

This logo refers to the period (10 years) during which the hazardous substances in electronic and electrical products will not leak or mutate so that the use of these [substances] will not result in any severe environmental pollution, any bodily injury or damage to any assets.

II 类设备符号



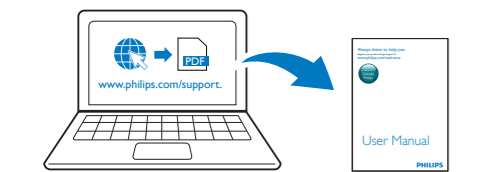
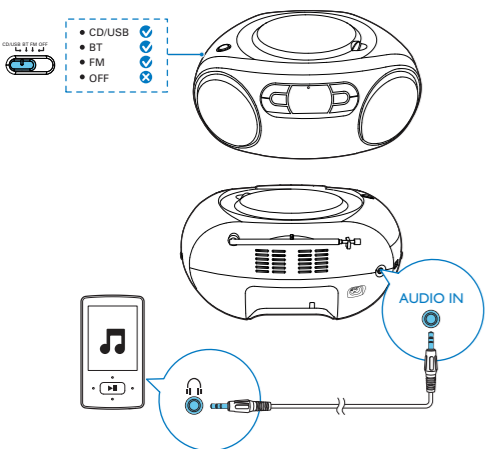
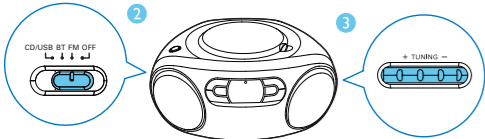
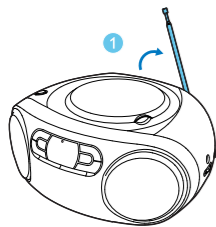
此符号表示本装置具有双层绝缘系统。

注

- 型号铭牌位于本设备的底部。

规格

额定输出功率 (功放) : 2 X 2W RMS≤10% THD
声频响应: 125 Hz - 16K Hz
扬声器驱动: 2 x 3", 4Ω
支持碟片类型: CD-DA, CD-R, CDRW, MP3-CD (8/12 cm)
蓝牙版本: V3.0 +EDR
支持蓝牙规范: HFPV1.6, A2DPV1.2, AVRCPV1.4
蓝牙频段 / 输出功率: 2.400GHz ~ 2.483GHz ISM 波段 / ≤ 4dBm (2 级)
USB (用于播放) : A 型, USB Direct 2.0, 5V / 500mA, MSC 文件格式, FAT 16/32
MP3, 32-320 Kbps 及多种比特率
调谐器频率范围: FM 87.5-108MHz
AUX 输入电平: 650mV RMS
电池: 2 号电池 x 6
电源: 交流电输入: 220V~ 50 Hz
运行功耗: 15W
电池模式下播放时间: 使用碱性电池 CD 模式下大约 8 小时 (CD 模式下播放音乐 @ 76dBa SPL)
ECO 待机功耗: < 0.5W
产品尺寸 (宽 x 高 x 深) : 主机 290 x 130 x 240 毫米
产品重量: 主机 1.26 公斤



EN

To download the full user manual, visit www.philips.com/support.

ZH-CN

若要下载完整的使用手册，请访问 www.philips.com/support。