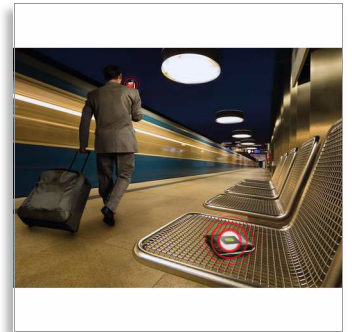


Philips  
InRange Bluetooth smart  
leash

for iPhone 5/4S & the new iPad



AEA1000

## Keep your valuables within range

by using Philips InRange wirelessly

Philips InRange keeps your valuables and iPhone within range using Bluetooth® wireless technology. It alerts you if you leave your valuables behind and can find them when misplaced. Fits perfectly into wallets or keys for peace of mind.

### Always keep your valuables close to you

- Free InRange app to pair iPhone to multiple InRange
- Alerts when InRange and iPhone are out of range
- Locate your iPhone or InRange with just one touch
- Set times where the InRange won't alert you

### Advanced Bluetooth wireless technology

- Long battery life with Bluetooth low energy technology
- Make calls via Bluetooth headset even with InRange paired

### Simple & easy to use

- Small and thin to easily fit into your wallet's card pocket
- InRange with protective case safely attaches to keys or bags



# PHILIPS

sense and simplicity

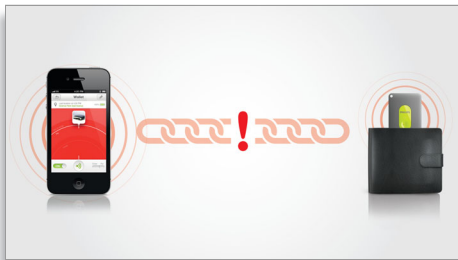
# Highlights

## Free app pairs iPhone/InRange



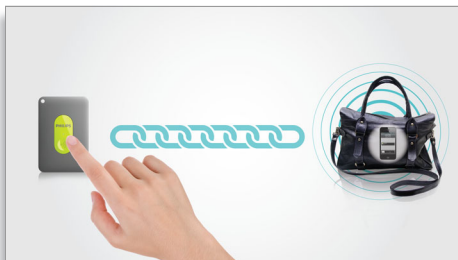
On your iPhone 4S/New iPad, download Philips InRange from Apple App Store and start running the app. Follow the on-screen instruction to add the items you want to protect and set the alarm range. Then attach Philips InRange devices to the item.

## Alerts when out of range



Alerts when InRange and iPhone are out of range

## One touch to locate



To look for the added item within the set range, tap the home button on your iPhone 4S/New iPad and the InRange device attached to the item rings. Press the button on the InRange device to look for your iPhone 4S/New iPad within the set range in reverse.

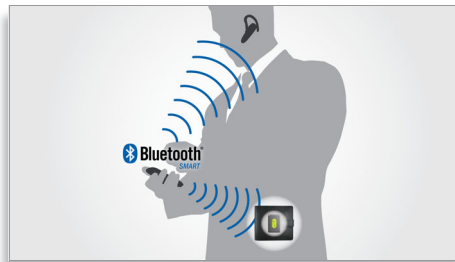
## Create SafeTime

Set times where the InRange won't alert you

## Low energy operation

Long battery life with Bluetooth low energy technology

## Continue Bluetooth calls



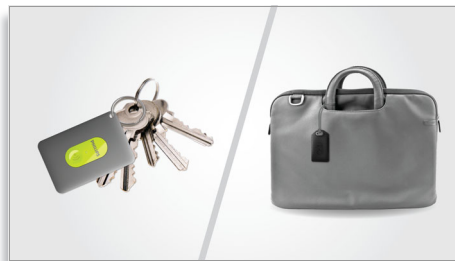
Make calls via Bluetooth headset even with InRange paired

## Fits perfectly into wallet



Small and thin to easily fit into your wallet's card pocket

## Easily attaches to valuables



InRange with protective case safely attaches to keys or bags

# Specifications

## Bluetooth® wireless technology

- Version: BT 4.0
- Find Me Profile 4.0
- Proximity Profile 4.0
- Battery Service 4.0
- Tx Power Service 4.0
- Phone Alert Status Profile 4.0
- Alert Notification Profile 4.0

## Sound

- Buzzer

## iPhone/iPad App

- Free Philips InRange App
- Connects up to 3 InRange units

## iPad compatibility

- The new iPad

## iPhone compatibility

- iPhone 4S

## Accessories

- Pouch: silicon pouch with metallic lock
- CR2016 battery: 2 pcs
- Lanyard
- Metal pin: for battery door release
- Quick start guide

## Power Supply

- Battery: CR2016
- Battery life: 3 months

## Dimensions

- Product dimensions (W x H x D): 60 x 40 x 3.8 mm
- Product weight (g): 20



Issue date 2013-04-16

Version: 5.0.5

12 NC: 8670 000 96225  
EAN: 00 60958 52296 55

© 2013 Koninklijke Philips Electronics N.V.  
All Rights reserved.

Specifications are subject to change without notice.  
Trademarks are the property of Koninklijke Philips Electronics N.V. or their respective owners.

[www.philips.com](http://www.philips.com)

\* Philips is not responsible for stolen valuables of any kind that may be caused by the use of InRange.